



HE MAHERE OHOTATA MŌ
TE HAPORI

Eskdale Area

Eskdale - Whirinaki - Tangoio

Community Resilience Plan



**HERETAUNGA
HASTINGS** DISTRICT COUNCIL



HAWKE'S BAY
EMERGENCY MANAGEMENT

GROUP

hbemergency.govt.nz

Date: 18 February 2026 Version: 2.1 Authorised By:
Emergency Management Operations Team Leader

RĀRANGI TAKE

Contents

Kupu arataki

INTRODUCTION	1
What to do during and after an emergency	4
What hazards do we have?	6
Hazard profiles & maps	11
Vulnerabilities & valued strengths	13
Community resources & capability	15
Potential impacts & responses	17
Resilience tools	18
In an emergency you will need	20
Appendices & resources	21

KUPU ARATAKI

INTRODUCTION

The purpose of this Community Resilience Plan is to help our community to ensure measures are in place to help us look after each other before, during, and after an emergency.

This writing and information within this plan comes from our community.



Description of our community

The communities of Eskdale, Whirinaki, Tangoio, and Bay View (which is predominantly located within the Napier City Council boundary), are closely connected due to their geographic proximity and common hazards.

The area consists of residential centres in Bay View and Whirinaki, with mostly productive land and lifestyle block properties in the Eskdale valley and hills. The Eskdale productive activities include cropping or grazing, and vineyards with winemaking and restaurant facilities.

The Esk River is a key feature of the area, providing ample recreational opportunities and wildlife habitat. Over the years the Esk Valley has had its fair share of severe flooding such as in 1897, 1938, 1988 during Cyclone Bola, 2018, and again in 2023 during ex-Tropical Cyclone Gabrielle.

He waka eke noa
We are all working together

This community includes the following areas:

- The open marsh land south of the Bay View township inland (West) to the foothills.
- To the North encompassing the Esk River catchment.
- To the Pacific Ocean to the East.

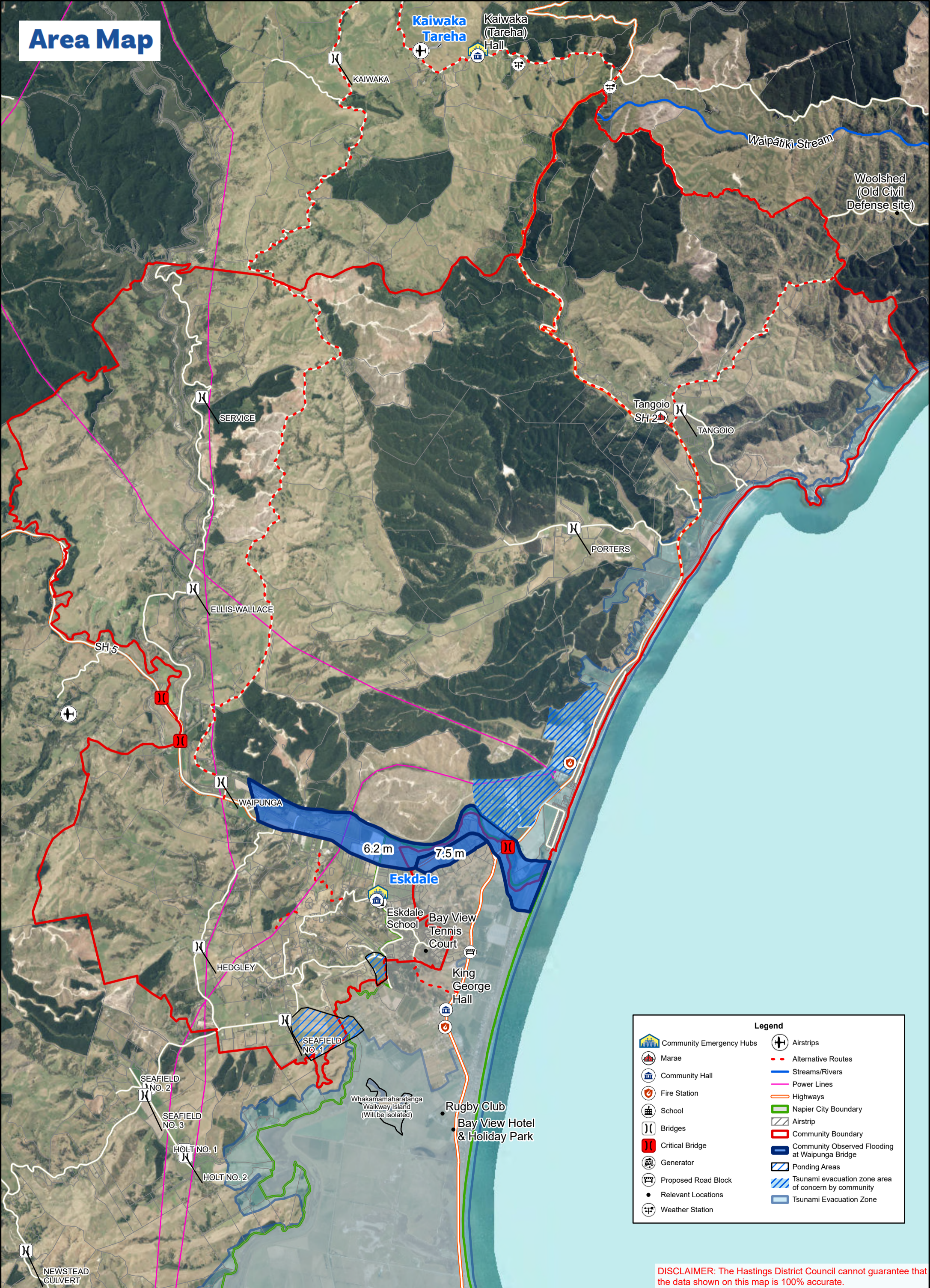
Plan Principles

This plan is based on the following key principles:

- Life safety is paramount, and all actions should aim to achieve this outcome.
- The community is prepared to:
 - Self-evacuate as early as possible, or
 - Be self-sufficient for at least 14 days.
- Community support will be centrally coordinated through a **Community Emergency Hub at the Eskdale School**, or alternatively from the King George Hall in Bay View.

***He waka eke noa
We are all working together***

Area Map



Legend

	Community Emergency Hubs		Airstrips
	Marae		Alternative Routes
	Community Hall		Streams/Rivers
	Fire Station		Power Lines
	School		Highways
	Bridges		Napier City Boundary
	Critical Bridge		Airstrip
	Generator		Community Boundary
	Proposed Road Block		Community Observed Flooding at Waipunga Bridge
	Relevant Locations		Ponding Areas
	Weather Station		Tsunami evacuation zone area of concern by community
			Tsunami Evacuation Zone

DISCLAIMER: The Hastings District Council cannot guarantee that the data shown on this map is 100% accurate.

I TE WĀ O TE OHOTATA

WHAT TO DO DURING AND AFTER AN EMERGENCY



STEP 1

Try to stay calm, check yourself and others in your household for injuries, for minor injuries provide first aid, then assess your home for damage.

Is everything ok?

NO



STEP 2

If you or anyone in your household have significant injuries call **111 immediately**.
If your home is not safe, **evacuate immediately and call 111**.

YES



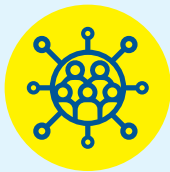
STEP 3

Check on your immediate neighbours. Assess your surroundings for damage, check on your street & neighbourhood.

If safe to proceed go to STEP 4



A place for your community to gather and help each other out during an emergency.



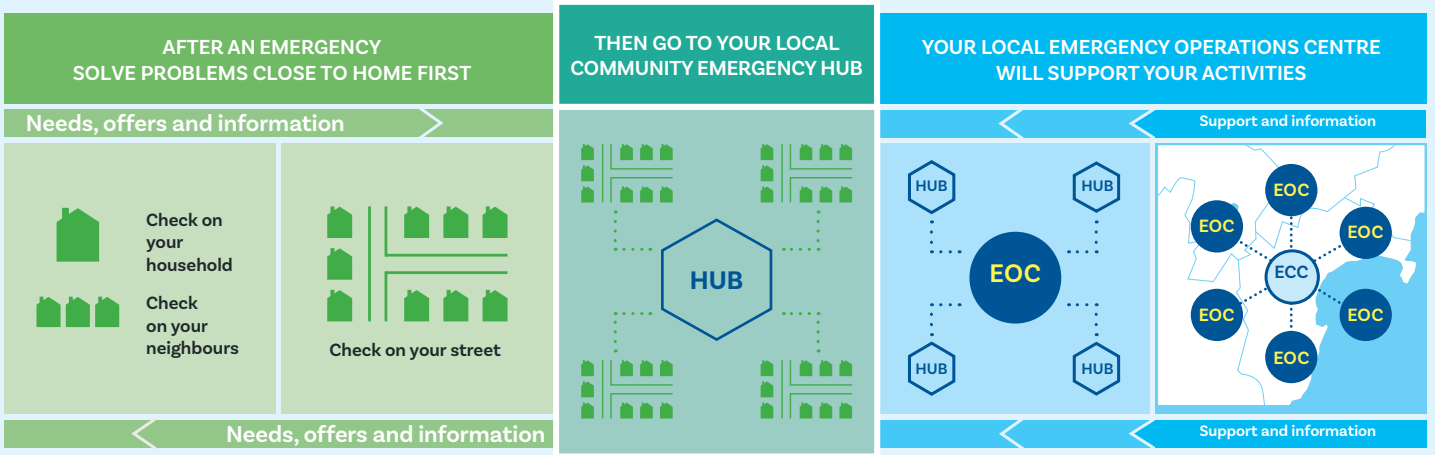
STEP 4

Go to your local Community Emergency Hub.

The Hub is a designated place where your community can gather, connect with one another, and solve problems using the skills and resources which already exist among your community.

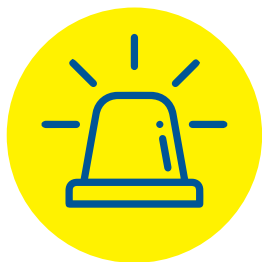
Community Emergency Hubs are a place for people to work together to solve problems locally while still coordinating with councils about big problems.

See page 3 for a map of your local Hub location.





During an emergency, councils will stand up an Emergency Operations Centre (EOC) to respond. The EOC will give support and information back into the community, and give information to the regional Emergency Coordination Centre (ECC).



WHAT HAZARDS DO WE HAVE?






Below is a list of the hazards that could cause an emergency in our community. More information on these hazards, and what you can do before, during and after an emergency, can be found on the HB Emergency Website (www.hbemergency.govt.nz).

These hazards, perceived likelihood and impact, warning type, and immediate actions were decided with the community.

HAZARD (perceived likelihood & impact)	WARNING & ACTIONS	IMPACTS
 <p>1. Earthquake</p>	<p>Warning - Earthquakes are rapid onset events and occur without warning.</p> <p>Actions:</p> <ul style="list-style-type: none"> • Drop, Cover, Hold, including after following aftershocks. 	<ul style="list-style-type: none"> • Damage to buildings, roads and bridges. • Loss of water, electricity, and communication. • Isolation and cut off communities.
 <p>2. Tsunami</p>	<p>Local source tsunami warnings are primarily natural:</p> <ul style="list-style-type: none"> • Long or strong earthquake • Rapid retreat of the ocean • Unusual currents, noises and fizzing of the ocean <p>Actions:</p> <ul style="list-style-type: none"> • Everyone in the Tsunami evacuation zone immediately move to high ground. Tsunami evacuation points for Whirinaki are Tait Road and Ken Ross walkway. <p>Distant source tsunami warnings will primarily be:</p> <ul style="list-style-type: none"> • Evacuations by emergency services e.g. door knocking • NEMA lead via Media, including social media, radio, TV, internet etc 	<ul style="list-style-type: none"> • Inundation of coastal and riverine areas - water from the coast could travel up the river. • Strain on inland community resources. • Large scale displacement. • Loss of water, electricity and communications. • Liquefaction (from a near-source earthquake). • Disruption to businesses. • Note: Road closures will be in place to prevent access to areas under threat, in a distant source tsunami warning.

HAZARD (perceived likelihood & impact)	WARNING & ACTIONS	IMPACTS
	<p>Actions:</p> <ul style="list-style-type: none"> Follow the direction of emergency services. Evacuate to family or friends. 	
 <p>3. Storm, Flood, Severe Weather</p>	<p>Warning - MetService warning. Information disseminated by Hawke's Bay Emergency Management Office (HB EMO) and council:</p> <ul style="list-style-type: none"> A forecast of more than 200mm of rain in 24 hours should be monitored closely (Be Ready to act). A forecast of more than 300mm of rain in 24 hours presents high risk of flooding (Take Action when needed). <p>Notes:</p> <ul style="list-style-type: none"> It takes approximately 4 hours for rain levels registered at the Maunganui catchment rain gauge to reach the lower Esk Valley. When the Esk River reaches a depth of 6.2 m at Waipunga Bridge the water is likely to leave the river channel. <p>Actions:</p> <ul style="list-style-type: none"> Self-evacuate to high ground if you see floodwater rising or when forecasts indicate flooding is possible. Do not wait for an official warning. Preferably stay with friends or family out of the hazardous area. 	<ul style="list-style-type: none"> Flooding, coastal inundation and landslides. Damage from high wind. Loss of electricity. Evacuation of flood zones. Isolated communities.
 <p>4. Wildfire</p>	<p>Warning - Natural (Smoke), FENZ warning & Bay View fire siren.</p> <p>Actions:</p> <ul style="list-style-type: none"> Evacuate to an unaffected area. Preferably stay with friends or family out of the hazardous area. 	<ul style="list-style-type: none"> Damage to buildings. Restrictions to the areas people can access. Impact on infrastructure, services, and commercial actions.

HAZARD (perceived likelihood & impact)	WARNING & ACTIONS	IMPACTS
 <p>5. Landslide</p>	<p>Warning - Landslides can happen without warning but may be triggered by other hazards.</p> <p>Actions:</p> <ul style="list-style-type: none"> • Evacuate to an unaffected area. • Preferably stay with friends or family out of the hazardous area. 	<ul style="list-style-type: none"> • Blocked access to roads and properties. • Damaged critical infrastructure. • Further landslides may occur.
 <p>6. Volcanic Ashfall</p>	<p>Warning - Warning through GeoNet, HB EMO, and council.</p> <p>Actions:</p> <ul style="list-style-type: none"> • Shelter in place. • Disconnect downpipes to tank water. • Seal windows and doors. • DO NOT use vehicles or machinery until ashfall stops. 	<ul style="list-style-type: none"> • Damage to crops. • Health impacts and difficulty breathing if ash is inhaled. • Disruption to electricity, communications, and services. • Damage to vehicles, routes, and houses.
 <p>7. Human Pandemic</p>	<p>Warning - Te Whatu Ora / Health NZ warning. Information shared by HB EMO and council.</p> <p>Actions:</p> <ul style="list-style-type: none"> • Stay home if you are unwell. • Use hygiene measures including washing hands and using masks. 	<ul style="list-style-type: none"> • Widespread illness. • Schools, businesses, and community spaces shut and/or face disruption of services.

HAZARD RISK PROFILE & MAPS

Earthquake Amplification

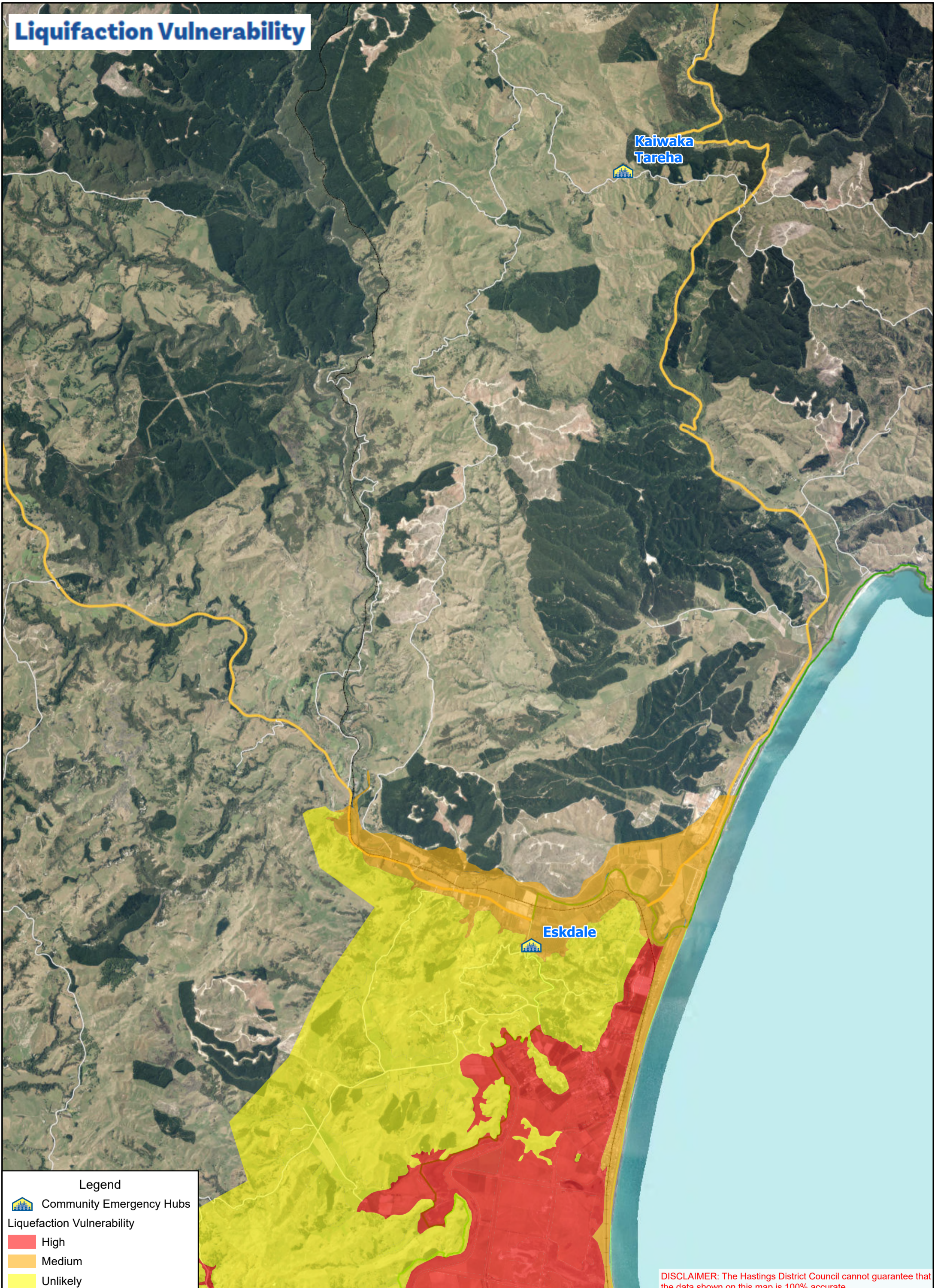


Legend

- Community Emergency Hubs
- Earthquake Amplification**
 - (High) Unconsolidated swamp, estuarine and lagoonal deposits and reclaimed land
 - (Medium-high) Alluvial sand, silt, and gravel
 - (Low) Bedrock / Regolith
- Faultlines
- Fault Avoidance Zones

DISCLAIMER: The Hastings District Council cannot guarantee that the data shown on this map is 100% accurate.

Liquifaction Vulnerability



Legend




- Community Emergency Hubs
- Liquefaction Vulnerability**
- High
- Medium
- Unlikely

DISCLAIMER: The Hastings District Council cannot guarantee that the data shown on this map is 100% accurate.

Tsunami Inundation



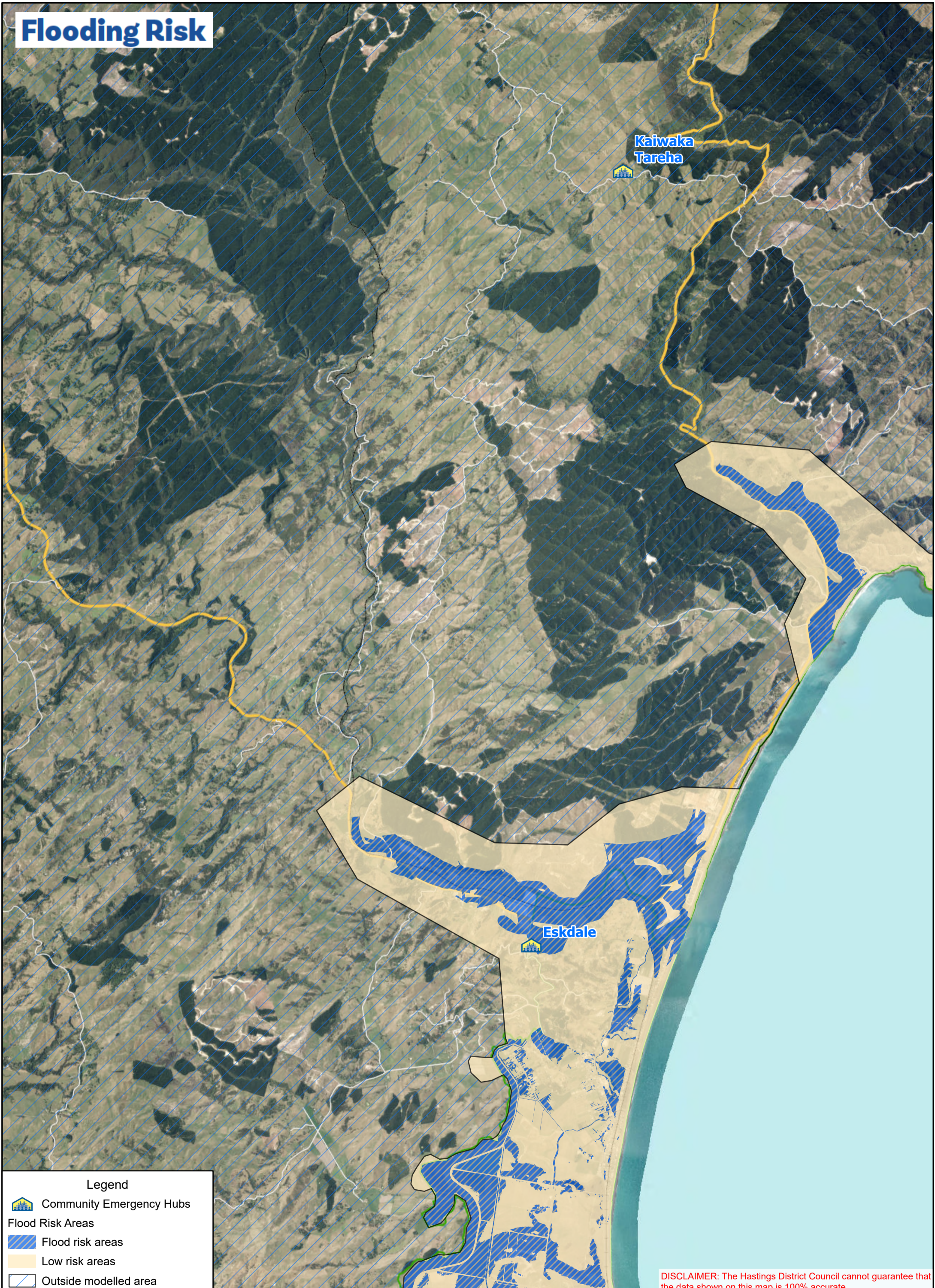
Legend

-  Community Emergency Hubs
-  Tsunami Evacuation Zone area of concern by community
-  Tsunami Evacuation Zone





DISCLAIMER: The Hastings District Council cannot guarantee that the data shown on this map is 100% accurate.



Flooding Risk



Legend

-  Community Emergency Hubs
- Flood Risk Areas**
-  Flood risk areas
-  Low risk areas
-  Outside modelled area

DISCLAIMER: The Hastings District Council cannot guarantee that the data shown on this map is 100% accurate.



VULNERABILITIES & VALUED STRENGTHS

	VULNERABILITIES	STRENGTHS
Social / Cultural	<p>All Areas</p> <ul style="list-style-type: none"> Vulnerable people or people living alone known through Neighbourhood Support network (i.e. elderly people, people with disabilities & those with medical conditions). 	<p>All Areas</p> <ul style="list-style-type: none"> Skills in the community, including: <ul style="list-style-type: none"> Trades (Builders, Electricians, Plumbers) Farmers Teachers Contractors. Medical Professionals (Doctors, Nurses, Therapists) Residents are knowledgeable about the hazards within their area. Will be self-sufficient for two weeks, if isolated. Fire & Emergency NZ (FENZ) station in Bay View.
Built	<p>All Areas</p> <ul style="list-style-type: none"> Main road access routes are in Tsunami inundation and flood zones. Access to water supply & fuel. Loss of internet connectivity. <p>Bay View</p> <ul style="list-style-type: none"> Large number of houses and King George Hall (Alternative Community Emergency Hub) on flat land in the Tsunami inundation zone. <p>Eskdale</p> <ul style="list-style-type: none"> Esk River road and rail bridges. <p>Whirinaki</p> <ul style="list-style-type: none"> Large number of houses on the coast in the Tsunami inundation zone. Contact Energy Whirinaki Gas Turbine Power Station in the Tsunami inundation zone. 	<p>All Areas</p> <ul style="list-style-type: none"> Lifestyle block houses have water tanks. Large number of houses on the Bay View and Esk Valley hills can provide shelter for others. Hubs have a wide range of emergency supplies available. <p>Whirinaki</p> <ul style="list-style-type: none"> Water reservoirs on hills behind Pan Pac. HDC VHF radio - access via Pan Pac. <p>Eskdale</p> <ul style="list-style-type: none"> HDC VHF radio - held by community representative. Esk Community-owned Simplex Radio Network.
Economic	<p>Bay View</p> <ul style="list-style-type: none"> Local grocery and market stores near the coast in Tsunami inundation zone. <p>Eskdale</p> <ul style="list-style-type: none"> Productive land in Esk Valley on flood plain and in Tsunami inundation zone. Wine processing facilities in the flood plain at the foot of the hills on the southern side of the Esk Valley. 	<p>Eskdale</p> <ul style="list-style-type: none"> Wine processing facilities in elevated position overlooking Bay View. A range of accommodation providers, largely located in elevated positions.

VULNERABILITIES & VALUED STRENGTHS

	VULNERABILITIES	STRENGTHS
	<p>Whirinaki</p> <ul style="list-style-type: none"> • Disruption to Pan Pac operations due to vulnerability of power and road access to flood and tsunami hazards. 	
Natural	<p>All Areas</p> <ul style="list-style-type: none"> • Esk river mouth prone to blocking. 	<p>All Areas</p> <ul style="list-style-type: none"> • Hills surround Bay View, Esk Valley and Whirinaki.

COMMUNITY RESOURCES



Our community is the best source of resources to help each other.

What are the items, skills, people, and places we can identify within our community to use?

RESOURCES & CAPABILITY	
Places & Spaces	<p>Bay View</p> <ul style="list-style-type: none"> King George Hall, Corner Main North Rd and Hill Rd (Alternative Community Emergency Hub) [GPS Coordinates: 39°25'08.0"S 176°52'02.1"E]. Bay View Fire Station, 8 Petane Rd. Bay View Hotel & Holiday Park, 43 Petane Rd. Hawke's Bay Holiday Park, 3 Onehunga Rd. Petane War Memorial Domain, 14 Onehunga Rd (Includes: Rugby, Football, Tennis, Bowling & Pistol clubs) <p>Eskdale</p> <ul style="list-style-type: none"> Eskdale School, 324 Hill Road (Community Emergency Hub). [GPS Coordinates: 39°24'08.8"S 176°51'09.3"E] Linden Estate winery and Valley D'Vine restaurant, 347 State Highway 5. Eskdale War Memorial Church, 411 State Highway 5. <p>Whirinaki</p> <ul style="list-style-type: none"> Pan Pac Forest Products, 1161 State Highway 2.
Infrastructure	<p>Bay View</p> <ul style="list-style-type: none"> BP Connect Bay View (petrol station), 596 Main North Rd. Mobil (petrol station), 590 Main North Rd. Community managed fuel supply in the Bay View area. <p>Bay View & Eskdale</p> <ul style="list-style-type: none"> Community Emergency Resource containers – Bay View Hills & Esk Valley southern hills. Mobile generators (held by private residences). Potential access to Eskdale valley from Avery Rd along Bay View hills. <p>Whirinaki</p> <ul style="list-style-type: none"> Community Emergency Resource containers at Tsunami evacuation points. Pan Pac forest roads on Whirinaki hills.
Networks & Groups of People	<p>Bay View</p> <ul style="list-style-type: none"> Neighbourhood support groups: Bay View

RESOURCES & CAPABILITY cont'd

Services in our Community

Bay View

- Bay View Village Pharmacy, 44A Petane Rd.
- Four Square Bay View, 9 Hill Rd.
- Taste of Summer (fruit & vegetable market), 728 Main North Rd.
- First Aid kits
- AED Defibrillators: Bay View Pharmacy, Bay View Fire Station, BP Connect, Bay View Bowling Club.

Eskdale

- First Aid kits at Eskdale School
- AED Defibrillator at Eskdale School

Whirinaki

- Residents with Boats and Marine radios.
- Whirinaki Road: Residents with Satellite phones.
- Starlinks held by residents in the area.
- First Aid kits in evacuation containers.
- AED Defibrillators: 39 North Shore Rd and Pan Pac Forest Products.

POTENTIAL IMPACTS & RESPONSES

IMPACT	HAZARD	RESPONSES
Need to evacuate	Tsunami, Storm/ Flood, Fire, Volcanic Ash, Landslide	<ul style="list-style-type: none"> • Grab bags prepared. • House/building security. • Community Emergency Hub location/s with basic supplies and communications.
Stuck at home	Earthquake, Storm/Flood, Volcanic Ash, Pandemic, Landslide	<ul style="list-style-type: none"> • Households have additional food, water & medication supplies. • Connect through the Neighbourhood Support Network. • Community Emergency Hub with communications.
Can't get home	Earthquake, Tsunami, Storm/Flood, Fire, Volcanic Ash, Landslide	<ul style="list-style-type: none"> • Pre-arranged plans including meeting points. • Communication through Community Emergency Hub network.
Injuries/ medical needs	All	<ul style="list-style-type: none"> • Households with trained first aiders and first aid supplies. • Community Emergency Hub first aid kit. • List of medical professionals.
No water	Earthquake, Tsunami, Storm/Flood, Fire, Volcanic Ash.	<ul style="list-style-type: none"> • Household water tanks. • Household stores of bottled water. • River water (requires boiling).
No electricity	Earthquake, Tsunami, Storm/Flood, Fire, Landslide	<ul style="list-style-type: none"> • Household generators - held by many farmers. • Eskdale School backup power generator. • Petrol supply from local petrol stations.
No communications (phone or internet)	Earthquake, Tsunami, Storm/Flood, Fire, Volcanic Ash	<ul style="list-style-type: none"> • Residents with Starlink in the area. • Community Emergency Hub VHF radio.
Loss of road access	Earthquake, Tsunami, Storm/Flood, Fire, Volcanic Ash, Landslide	<ul style="list-style-type: none"> • Alternative access routes (refer to maps). • Farm machinery available to restore road access.

RESILIENCE TOOLS

TOOLS		STATUS
1.	Personal preparedness enablers: Household Plan & Grab & Go Bag.	In Progress
2.	Community resilience & hub training, including lanyards roles.	Complete
3.	Community events – Street events, Hall drop-in days, Container open days.	On Going
4.	Social media: Bay View, Eskdale, Whirinaki Community (Private Facebook Group - www.facebook.com/groups/182722925201904).	On Going
5.	Regular hub co-ordinator get-togethers.	On Going
6.	Identify community members with Satellite internet connection (eg Starlink).	On Going

STAY?

ME NOHO?

SHELTER IN PLACE

Me Noho Ki Taua Wāhi



Our hazard decision path



Earthquake • He Rū

Our FIRST response:



Our SECOND response:

Was that long? (more than a minute)
Was that strong? (hard to stand up)

NO

YES



Tsunami • He Ngaru Taitoko

Are we in a tsunami zone?

NO

YES



Flood • He Waipuke

Are we in a flood zone?

Are we in danger from rising water?

NO

YES



Fire • He Kāpura

Go to agreed assembly area



Volcanic ash He Pungarehu Puia



Hazardous substance Ngā Matū Pūmate

OR GO?

ME HAERE RĀNEI?



Take the designated route to our safe location.

EVACUATE

Me Haere



IN AN EMERGENCY YOU WILL NEED:



AN EMERGENCY PLAN

Make a plan for your household, whānau and pets to get through an emergency, consider;

- Where will you meet or evacuate to?
 - How will you look after each other?
 - Who might need our help?
 - Who will we need to contact?
 - What will we do if we are stuck at home?
 - What will we do if we have no power, no water, no way to get information?
-



EMERGENCY SUPPLIES

You don't have to have them all in one place, but you might have to find them in a hurry and/or in the dark, store:

- Three litres of water per person per day.
 - First aid kit.
 - Long-lasting food that doesn't need cooking, or a way to safely cook or heat food without electricity, and extra fuel.
 - Consider also specific food needs of babies, children and pets.
 - Torch.
 - Emergency cash.
 - Half a tank of fuel in your vehicle.
 - Toilet paper and large plastic buckets for an emergency toilet.
 - Work gloves and a properly fitted mask.
-



EMERGENCY GRAB BAG

Pack your emergency grab bag with basic supplies including:

- Walking shoes, warm clothes, raincoat, and hat.
 - Water and snack food (remember babies and pets too).
 - Hand sanitizer & face mask.
 - Portable phone charger.
 - Cash.
 - Copies of important documents and Photo ID.
 - Medication.
 - Small first aid kit.
-

Remember your grab bag should be light enough that you can still carry it.

APPENDIX A: INTERNAL & EXTERNAL COMMUNICATION

Communication: Internal

The following table lists the different methods the community can use to communicate with each other:

	AREA/GROUP	NEED/ISSUE	APPROACH
1.	Street Leads	Isolation of individual roads from Community Emergency Hub.	Local handheld radios.
2.	Neighbourhood Support Network	Welfare Checks on people in the community.	Phone call tree run by Neighbourhood Support network contacts.
3.	Facebook Groups	Internal community communications.	<ul style="list-style-type: none">• North Shore/Pohutukawa Group.• Bay View, Eskdale & Whirinaki Community.• Bay View, Eskdale & Whirinaki Cyclone Recovery.

APPENDIX A: INTERNAL & EXTERNAL COMMUNICATION

Communication: Emergency Agencies

The following table lists the contact details for Emergency Agencies:

Monitor the following sources of information to stay informed:

Television | Radio [Frequencies: 90.3FM, 89.5FM, 97.5FM, 94.5FM]

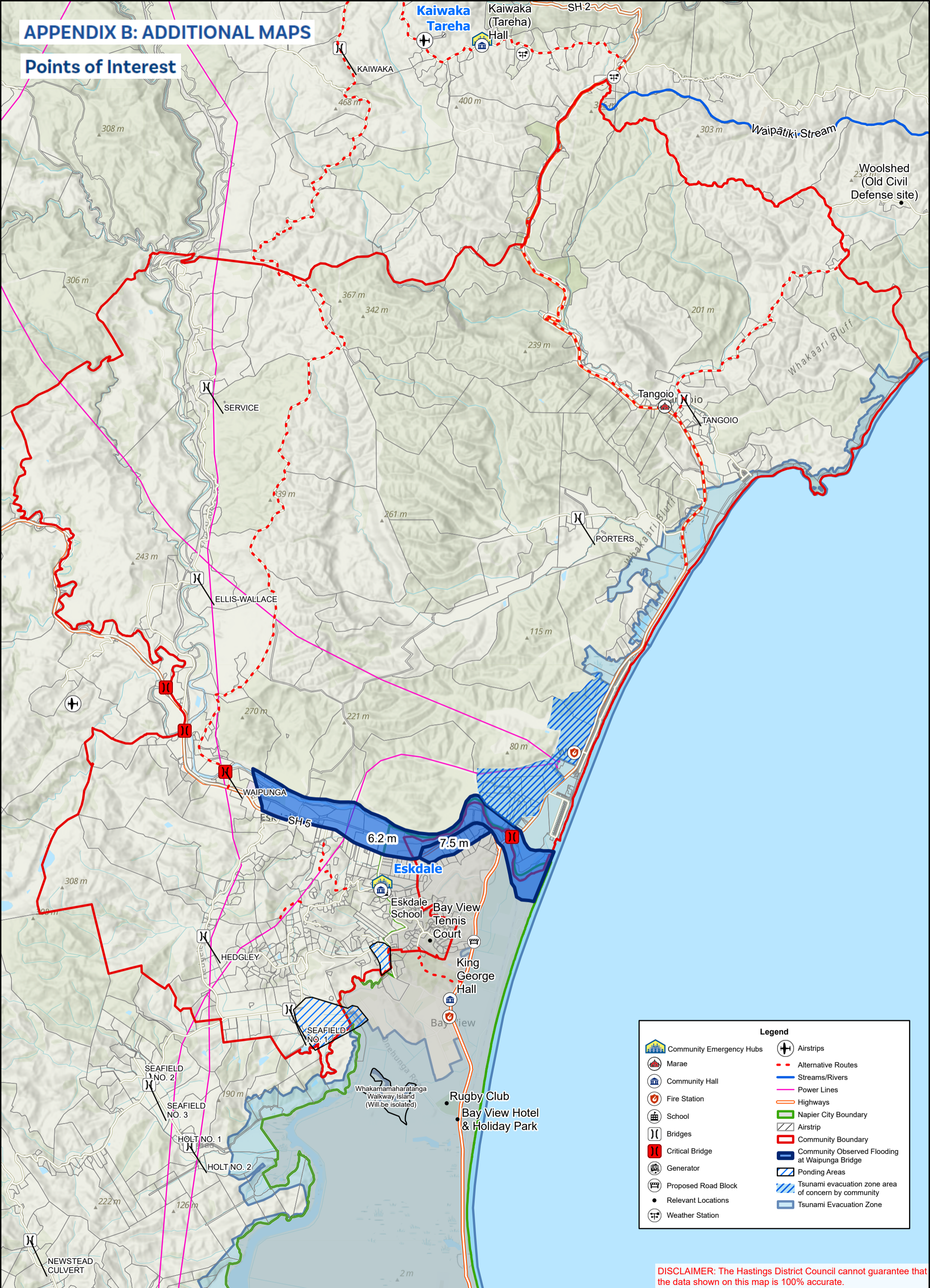
Online Websites & Social Media (Official & Community Pages)

IMPORTANT: Call **111** for all urgent or emergency situations.

AGENCY	NEED/ISSUE	CONTACT/SOURCES OF INFORMATION
Police	Risk to people or property	Urgent: Call 111 OR Non-urgent: Call 105 or online
Fire & Emergency New Zealand (FENZ)	Risk to people or property	Call 111
Ambulance (St John)	Risk to people	Call 111
Hawke's Bay Emergency Management Office	Warnings, alerts, advice and key information before, during and after an emergency.	Online: https://www.hbemergency.govt.nz/ OR Facebook – HB Civil Defence Emergency Management Group.
MetService	Severe weather warnings, alerts.	Online https://www.metservice.com/warnings/home
Hastings District Council	Status of: <ul style="list-style-type: none"> local roads (i.e. not state highways) Urban water supply Urban wastewater (sewerage). Solid waste/rubbish collection and disposal. 	Call (06) 871 5000 (24/7) OR Email: customerservice@hdc.govt.nz (Monday to Friday 9am – 5pm) Facebook - Hastings District Council - Te Kaunihera ā-Rohe o Heretaunga Road status: https://www.hastingsdc.govt.nz/services/roads-and-streets/road-works
New Zealand Transport Agency (NZTA) / Waka Kotahi	Status of State Highways	Call: 0800 4 HIGHWAYS or (0800 44 44 49) Online: https://www.journeys.nzta.govt.nz/highway-conditions/ OR Facebook – NZ Transport Agency Waka Kotahi – Hawke's Bay & Gisborne
Unison Networks	Status of power supply	Call 0800 2 UNISON or 0800 2 86476 OR Online https://www.unison.co.nz/outages/
Hawke's Bay Regional Council (HBRC)	Status of: <ul style="list-style-type: none"> Rainfall. River levels and flows. Flood control and drainage. Air quality. 	Call (06) 835 9200 (24/7) OR 0800 108 838 OR Email: info@hbrc.govt.nz (Monday to Friday 8am – 5pm) OR Facebook – Hawke's Bay Regional Council

APPENDIX B: ADDITIONAL MAPS

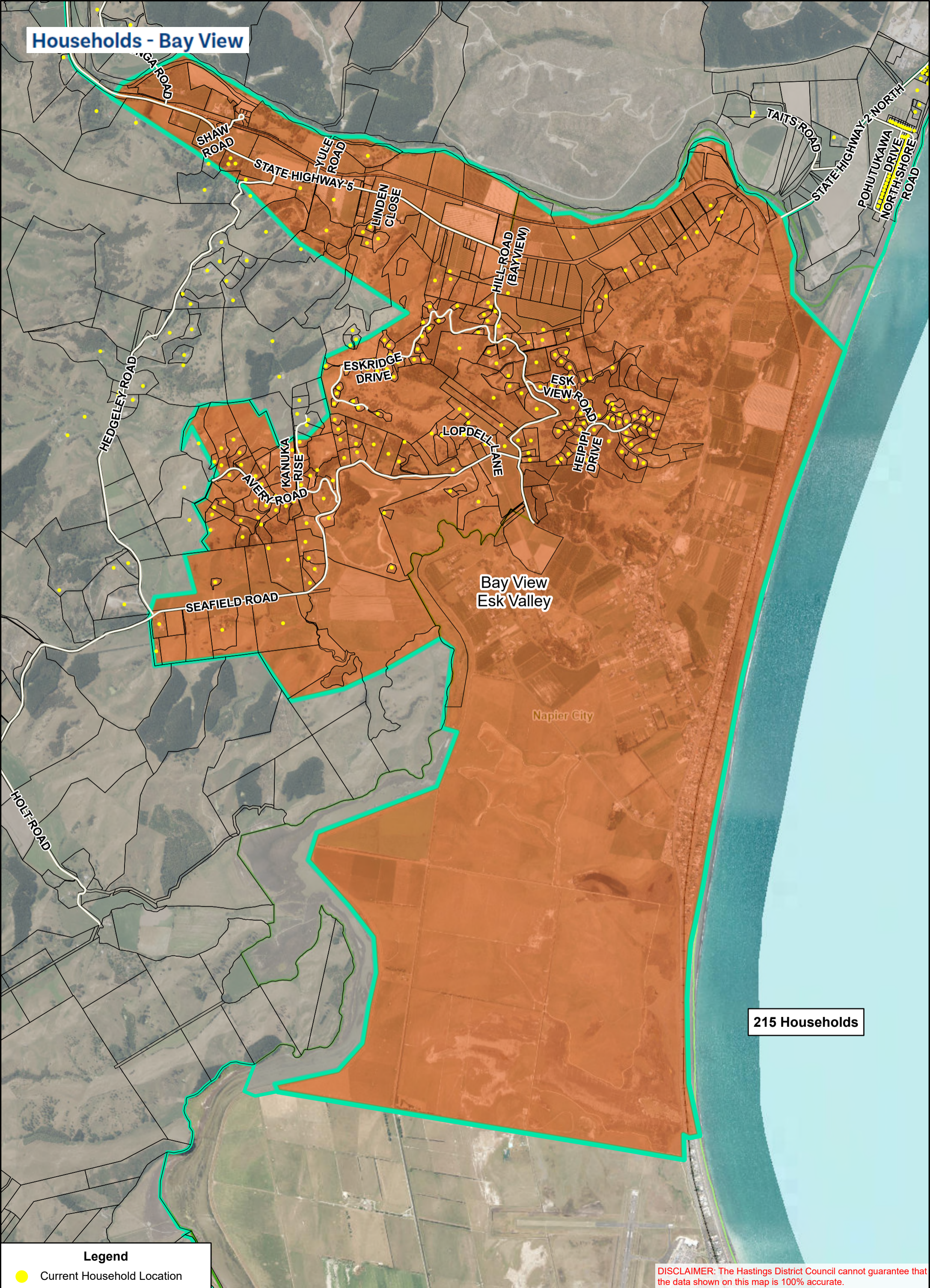
Points of Interest



Legend	
	Community Emergency Hubs
	Marae
	Community Hall
	Fire Station
	School
	Bridges
	Critical Bridge
	Generator
	Proposed Road Block
	Relevant Locations
	Weather Station
	Airstrips
	Alternative Routes
	Streams/Rivers
	Power Lines
	Highways
	Napier City Boundary
	Airstrip
	Community Boundary
	Community Observed Flooding at Waipunga Bridge
	Ponding Areas
	Tsunami evacuation zone area of concern by community
	Tsunami Evacuation Zone

DISCLAIMER: The Hastings District Council cannot guarantee that the data shown on this map is 100% accurate.

Households - Bay View



215 Households

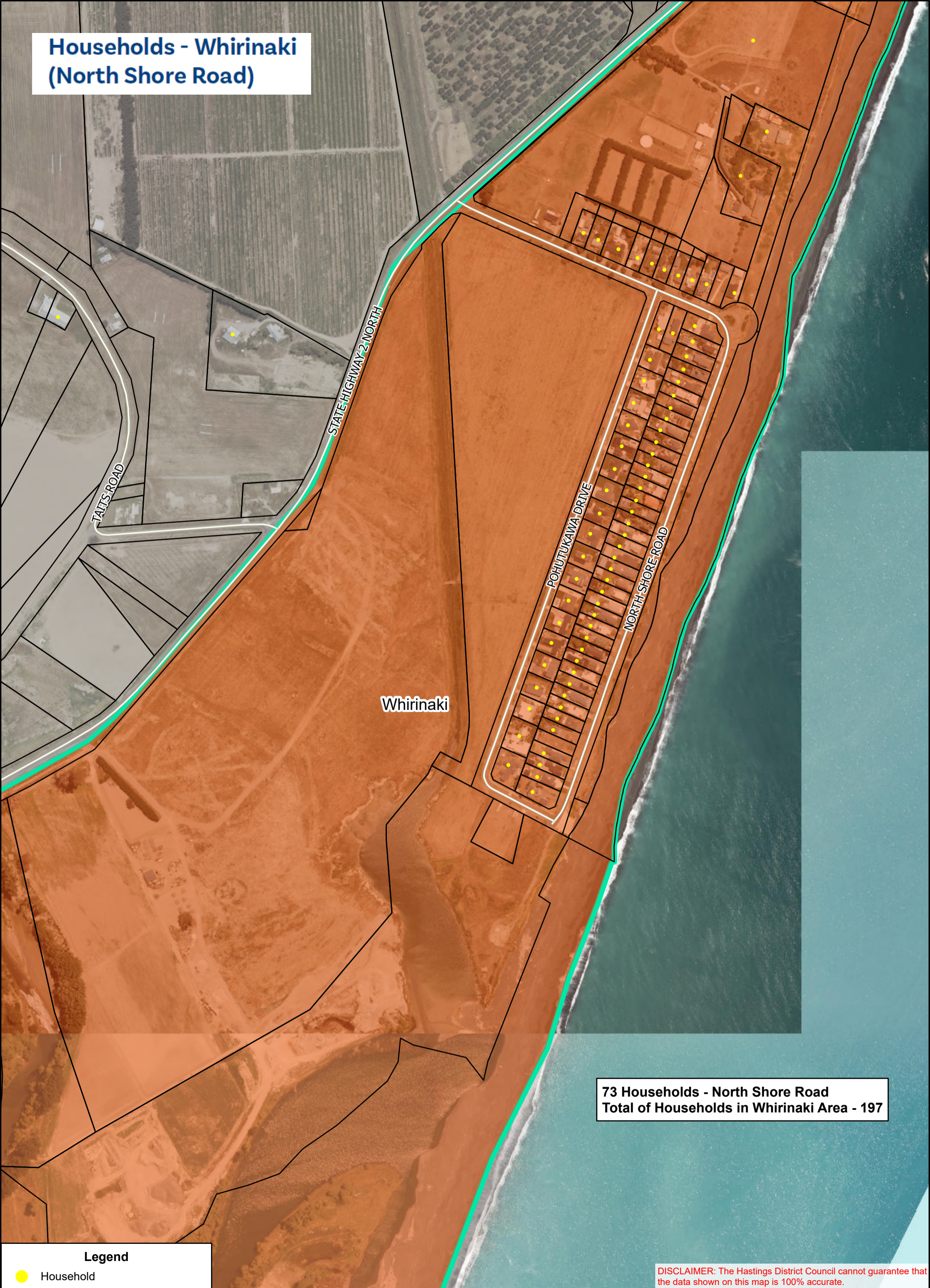
Legend

● Current Household Location

DISCLAIMER: The Hastings District Council cannot guarantee that the data shown on this map is 100% accurate.




Households - Whirinaki (North Shore Road)



73 Households - North Shore Road
Total of Households in Whirinaki Area - 197

Legend

 Household



DISCLAIMER: The Hastings District Council cannot guarantee that the data shown on this map is 100% accurate.

Households - Whirinaki (Whirinaki Road)



124 Households - Whirinaki Road
Total of Households in Whirinaki Area - 197

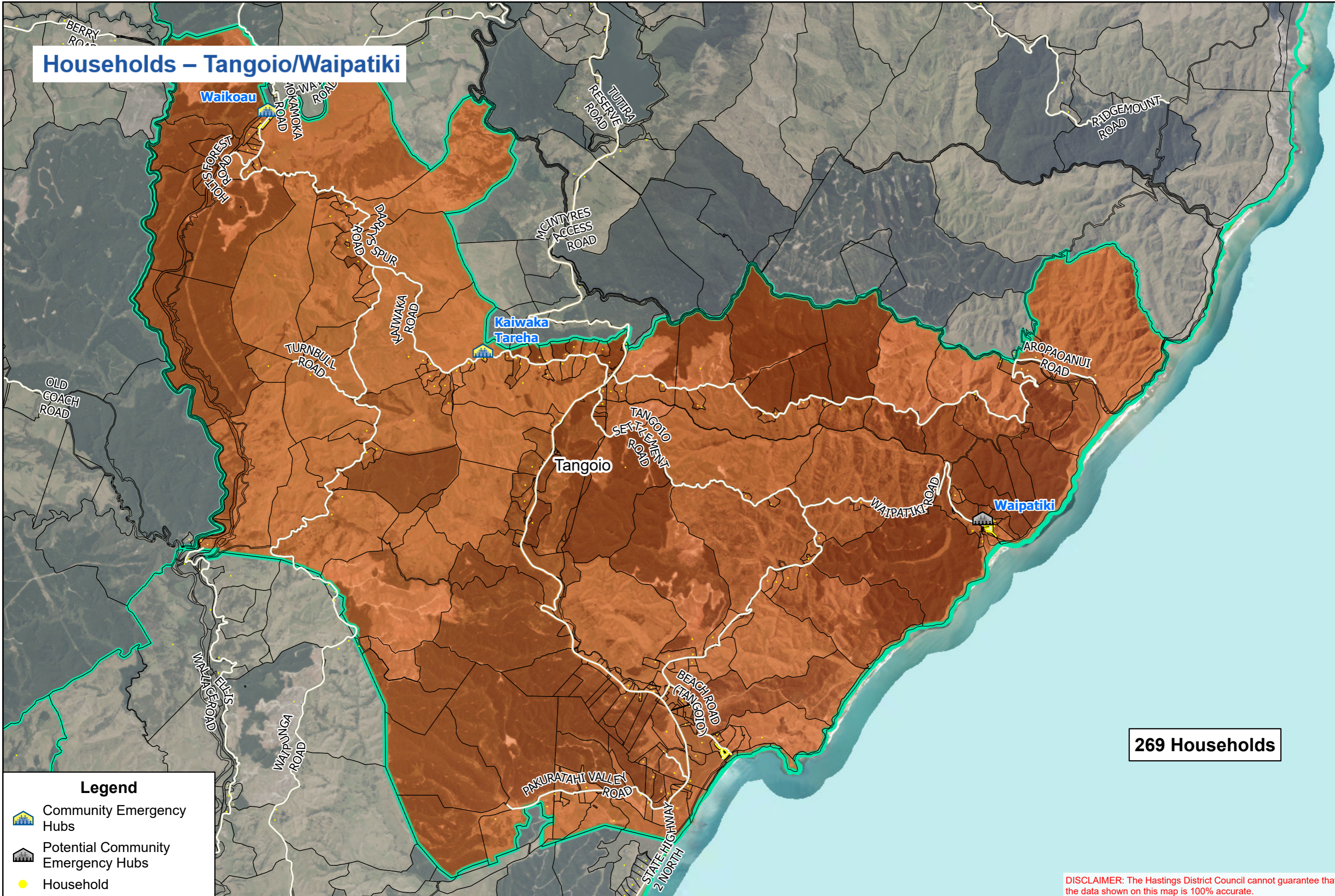
Legend

- Household

DISCLAIMER: The Hastings District Council cannot guarantee that the data shown on this map is 100% accurate.



Households – Tangoio/Waipatiki



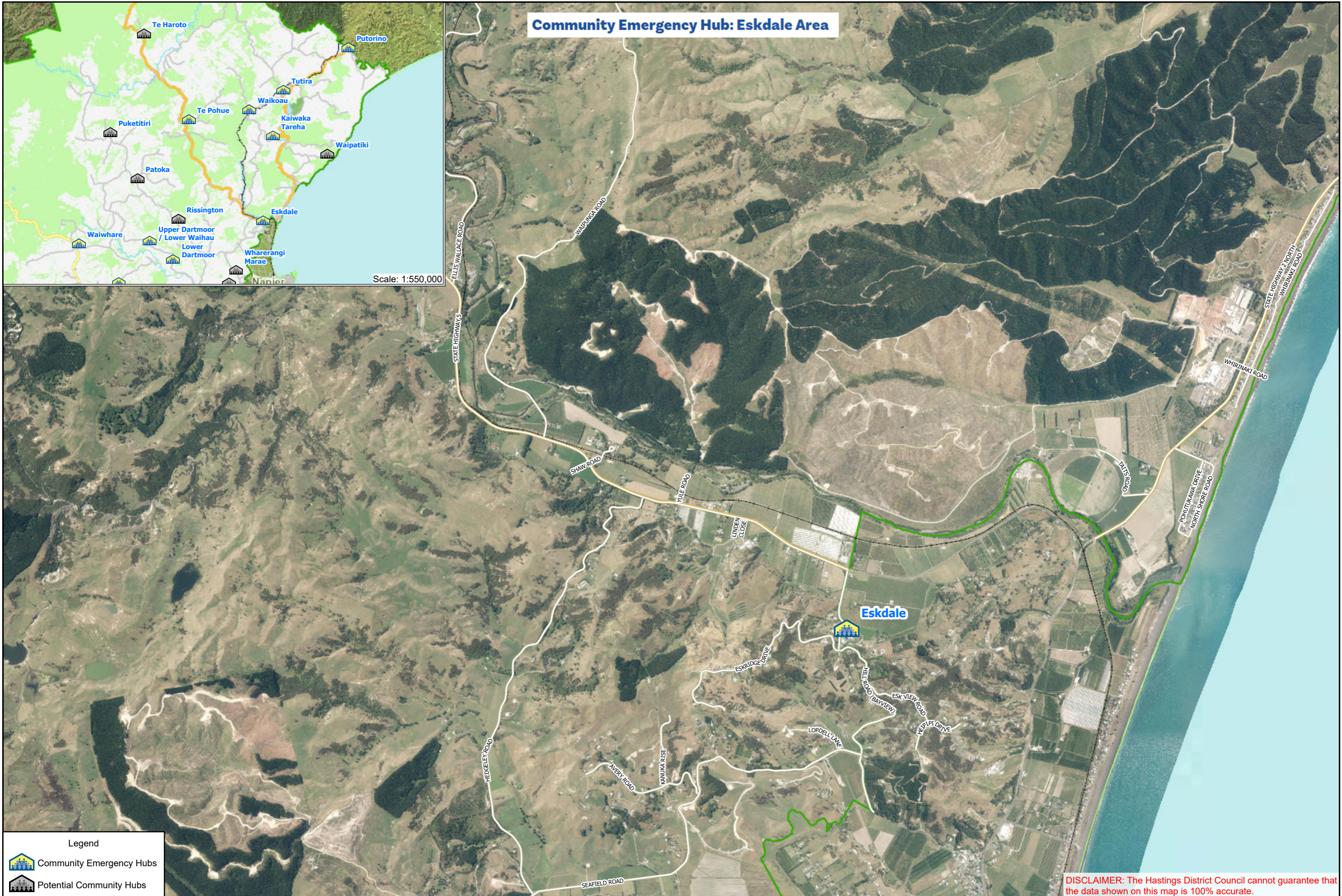
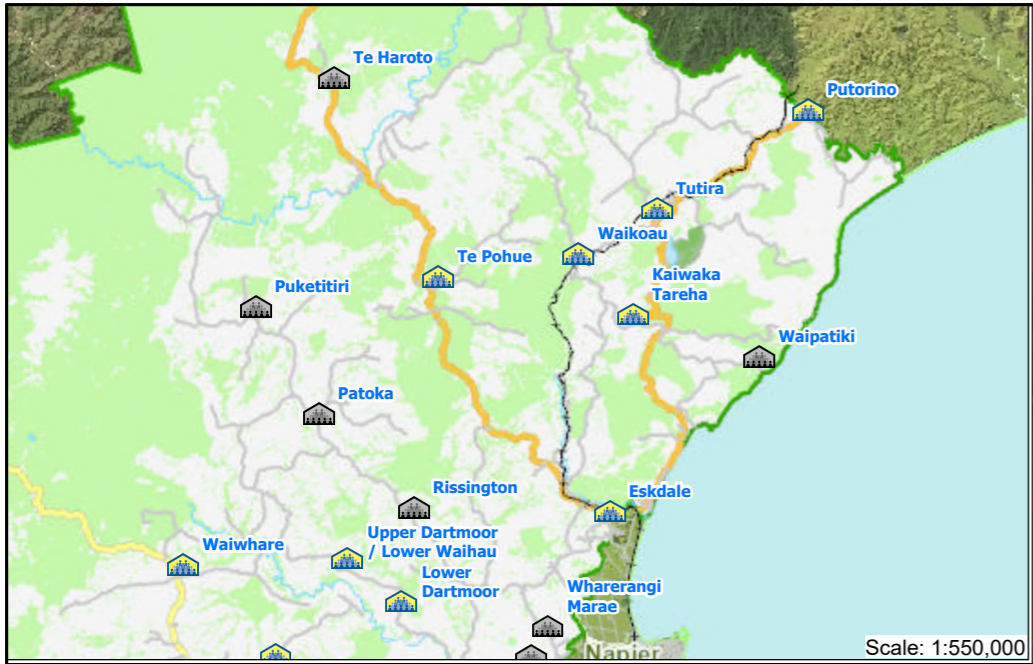
269 Households

Legend

- Community Emergency Hubs
- Potential Community Emergency Hubs
- Household

DISCLAIMER: The Hastings District Council cannot guarantee that the data shown on this map is 100% accurate.

Community Emergency Hub: Eskdale Area



Legend

- Community Emergency Hubs
- Potential Community Hubs

DISCLAIMER: The Hastings District Council cannot guarantee that the data shown on this map is 100% accurate.