



HE MAHERE OHOTATA MŌ  
TE HAPORI

# Kaiwaka Tareha

## Community Resilience Plan



**HERETAUNGA  
HASTINGS** DISTRICT COUNCIL



HAWKE'S BAY  
EMERGENCY MANAGEMENT

GROUP

[hbemergency.govt.nz](http://hbemergency.govt.nz)

Date: 28 October 2025 Version: 2.1 Approved By:  
Emergency Readiness & Business Continuity Advisor

# RĀRANGI TAKE

## Contents

Kupu arataki

<b>INTRODUCTION</b>	<b>1</b>
What to do during and after an emergency	4
What hazards do we have?	6
Hazard profiles & maps	9
Strengths & vulnerabilities	10
Community resources & capability	11
Potential impacts & responses	12
Resilience tools	13
In an emergency you will need	15
Appendices & resources	16

# KUPU ARATAKI

## INTRODUCTION

The purpose of this Community Resilience Plan is to help our community to ensure measures are in place to help us look after each other before, during, and after an emergency.

This writing and information within this plan comes from our community.



## Description of our community

Nestled amidst the lush landscapes of New Zealand's North Island, Kaiwaka Tareha is a traditional farming community, but its landscape has changed over the last few years with a rapid increase in lifestyle blocks. Those that live here like the rural character and lifestyle including the wide variety of recreational opportunities associated with the rivers, lakes, and mountains. For many families providing their children with a rural upbringing and small school way of life is important. Kaiwaka Tareha is located in the northern part of Hastings District and this area encompasses land from north of Tangoio to the Mohaka River, and Maungaharuru ranges inland. Farming and forestry are the predominant land uses in the area. State Highway 2 (SH2) linking Napier and Wairoa is the main transport route through the area supported by a network of rural roads. The Napier - Gisborne Railway also runs through this area but services on this line have been limited for some time. This community is reasonably self-contained.

As with other rural communities, those living on lifestyle properties were not always as well prepared as the farmers. There is a need to educate all communities about the need to be prepared. There is somewhat of a disconnect between the farming community and the life-stylers. Roding infrastructure, especially bridges and culverts are important to the livelihoods of these communities. There are three routes that can be used to get to Kaiwaka, namely the Tangoio Settlement Road, SH2, and the Waipunga Road.

***He waka eke noa***  
***We are all working together***

This community include the following areas:

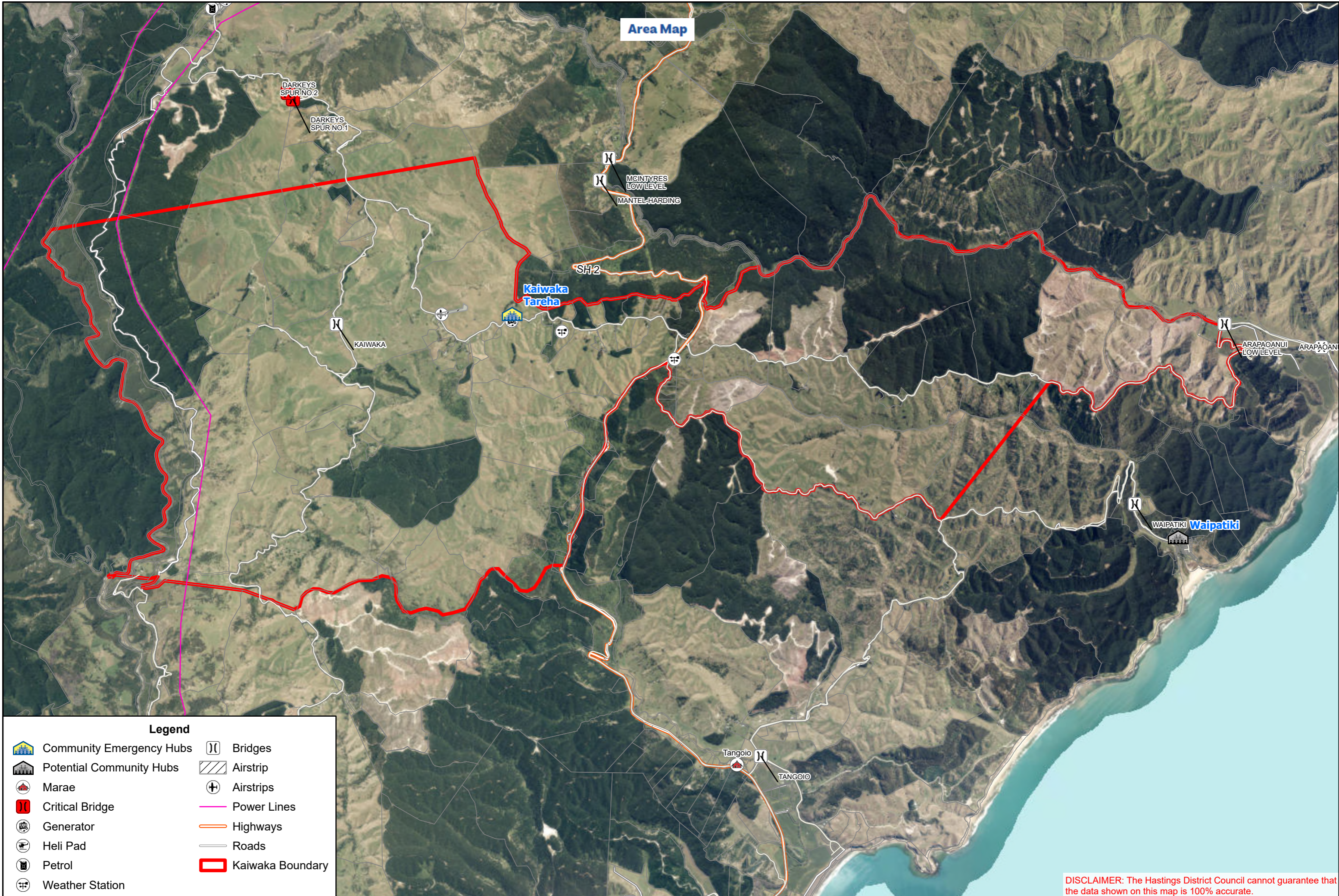
- All of Kaiwaka Road;
- 2539 to 2742 SH2 (White Pine Bush to Devil’s Elbow);
- All of Aropaoanui Road (*Note: Houses at the end of the road maybe become isolated from the hub. If this happens the HDC Emergency Operations Centre (EOC) should be notified*);
- 1238 and 1258 Tangoio Settlement Road;
- 1713 Waipunga Road to Kaiwaka Road; and
- Darcy's Spur Road from Kaiwaka Road to 177 Darcy's Spur Road.

### **Plan Principles:**

This plan is based on the following key principles:

- Life safety is paramount, and all actions should aim to achieve this outcome.
- The community is prepared to:
  - Self-evacuate as early as possible, or
  - Be self-sufficient for at least 14 days.
- Community support will be coordinated through the Community Emergency Hub at the Kaiwaka Community Hall.

***He waka eke noa***  
***We are all working together***



DISCLAIMER: The Hastings District Council cannot guarantee that the data shown on this map is 100% accurate.

# I TE WĀ O TE OHOTATA

## WHAT TO DO DURING AND AFTER AN EMERGENCY



### STEP 1

Try to stay calm, check yourself and others in your household for injuries, for minor injuries provide first aid, then assess your home for damage.

**Is everything ok?**

**NO**



### STEP 2

If you or anyone in your household have significant injuries call **111 immediately**.  
If your home is not safe, **evacuate immediately and call 111**.

**YES**



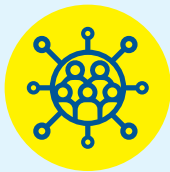
### STEP 3

Check on your immediate neighbours. Assess your surroundings for damage, check on your street & neighbourhood.

**If safe to proceed go to STEP 4**



A place for your community to gather and help each other out during an emergency.



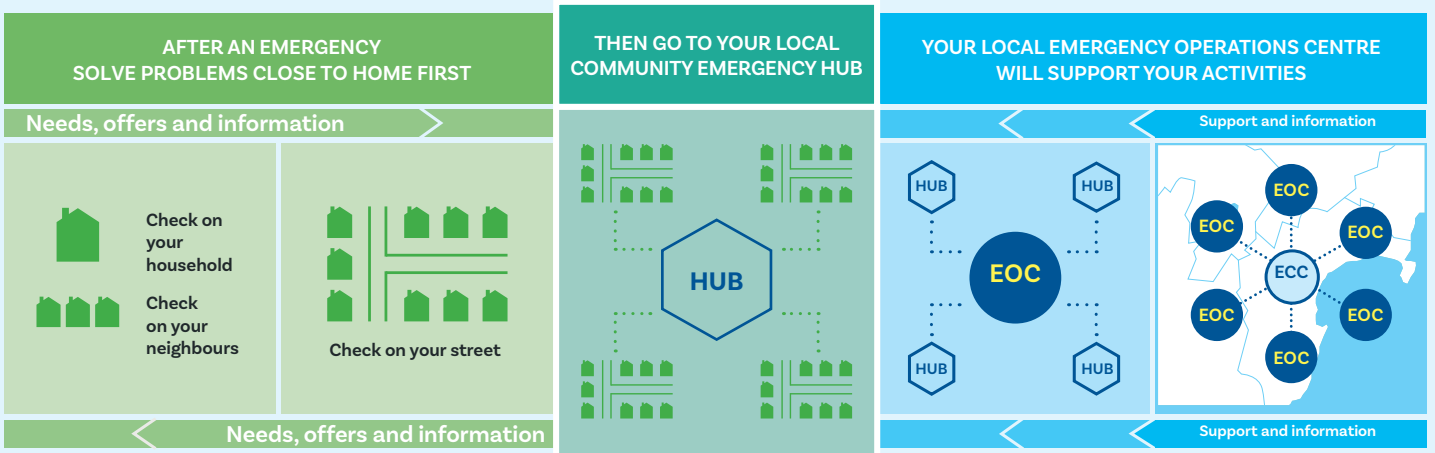
**STEP 4**

**Go to your local Community Emergency Hub.**

The Hub is a designated place where your community can gather, connect with one another, and solve problems using the skills and resources which already exist among your community.

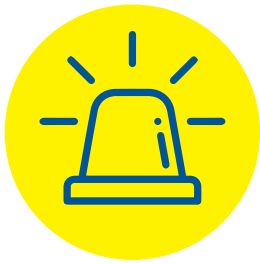
Community Emergency Hubs are a place for people to work together to solve problems locally while still coordinating with councils about big problems.

See page twenty for a map of your local Hub locations.






During an emergency, councils will stand up an Emergency Operations Centre (EOC) to respond. The EOC will give support and information back into the community, and give information to the regional Emergency Coordination Centre (ECC).





# WHAT HAZARDS DO WE HAVE?



Below is a list of the Hazards that could cause an emergency in our community. More information on these hazards, and what you can do before, during and after an emergency, can be found on the HB Emergency Website.

These Hazards, perceived likelihood and impact, warning type, and immediate actions were decided with the community.

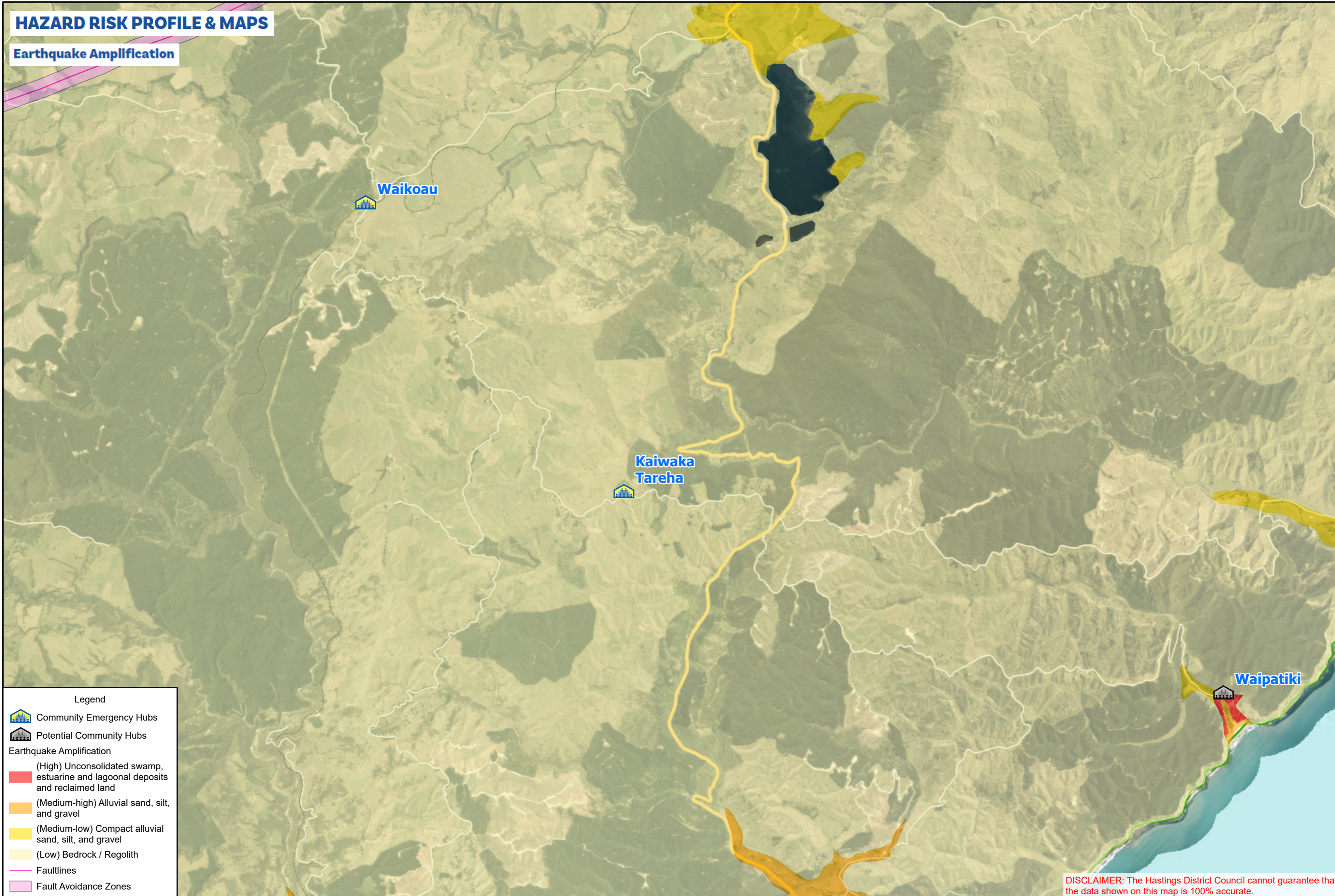
HAZARD (perceived likelihood & impact)	WARNING & ACTIONS	IMPACTS
 <b>1. Earthquake</b>	<p>Warning - Earthquakes are rapid onset events and occur without warning.</p> <p>Actions:</p> <ul style="list-style-type: none"> <li>• Drop, Cover, Hold, including during following aftershocks.</li> </ul>	<ul style="list-style-type: none"> <li>• Damage to buildings, roads and bridges.</li> <li>• Loss of water, electricity, and communication.</li> <li>• Isolation and cut off communities.</li> </ul>
 <b>2. Storm, Flood, and Severe Weather</b>	<p>Warning - MetService warning. Information disseminated by Hawke's Bay Emergency Management Office (HB EMO) and Council.</p> <p>Actions:</p> <ul style="list-style-type: none"> <li>• Self-evacuate to high ground if you see floodwater rising.</li> <li>• Do not wait for an official warning.</li> <li>• Preferably stay with friends or family out of hazardous area.</li> </ul>	<ul style="list-style-type: none"> <li>• Flooding, coastal inundation and landslides.</li> <li>• Damage from high wind.</li> <li>• Loss of electricity.</li> <li>• Evacuation of flood zones.</li> <li>• Isolated communities.</li> </ul>
 <b>3. Critical Infrastructure Failure (Roads, bridges &amp; power)</b>	<p>Warning - Unplanned loss of service. HB EMO, HDC, HBRC, NZTA and Unison websites and social media.</p> <p>Actions:</p> <ul style="list-style-type: none"> <li>• Shelter in place.</li> <li>• Check on neighbours and friends in the area.</li> </ul>	<ul style="list-style-type: none"> <li>• Restrictions to the areas people can access.</li> <li>• May cause distress or health issues for people.</li> </ul>

<b>HAZARD</b> <small>(perceived likelihood &amp; impact)</small>	<b>WARNING &amp; ACTIONS</b>	<b>IMPACTS</b>
 <p><b>4. Wildfire (Forestry)</b></p>	<p>Warning - Natural (Smoke). FENZ warning.</p> <p>Actions:</p> <ul style="list-style-type: none"> <li>• Evacuate to an unaffected area.</li> <li>• Preferably stay with friends or family out of hazardous area.</li> </ul>	<ul style="list-style-type: none"> <li>• Damage to buildings.</li> <li>• Restrictions to the areas people can access.</li> <li>• Impact on infrastructure, services, and commercial actions.</li> </ul>
 <p><b>5. Volcanic Ashfall</b></p>	<p>Warning - Warning through Geonet, HB EMO, and Council</p> <p>Actions:</p> <ul style="list-style-type: none"> <li>• Shelter in place.</li> <li>• Disconnect downpipes to tank water.</li> <li>• Seal windows and doors.</li> <li>• DO NOT use vehicles or machinery until ashfall stops.</li> </ul>	<ul style="list-style-type: none"> <li>• Damage to crops.</li> <li>• Health impacts and difficulty breathing if inhaled.</li> <li>• Disruption to electricity, communications, and services.</li> <li>• Damage to vehicles, routes, and houses.</li> </ul>
 <p><b>6. Landslide</b></p>	<p>Warning - Landslides can happen without warning but may be triggered by other hazards.</p> <p>Actions.</p> <ul style="list-style-type: none"> <li>• Evacuate to an unaffected area.</li> <li>• Preferably stay with friends or family out of hazardous area.</li> </ul>	<ul style="list-style-type: none"> <li>• Blocked access to roads and properties.</li> <li>• Damaged critical infrastructure.</li> <li>• Further landslides may occur.</li> </ul>
 <p><b>7. Human Pandemic</b></p>	<p>Warning - Te Whatu Ora / Health NZ Warning. Information shared by HB EMO and Council.</p> <p>Actions.</p> <ul style="list-style-type: none"> <li>• Stay home if you are unwell.</li> <li>• Use hygiene measures including washing hands and using masks.</li> </ul>	<ul style="list-style-type: none"> <li>• Widespread illness.</li> <li>• Schools, businesses, and community spaces shut and/or face disruption of services.</li> </ul>

<b>HAZARD</b> (perceived likelihood & impact)	<b>WARNING &amp; ACTIONS</b>	<b>IMPACTS</b>
 <p><b>8. Biosecurity</b> (Animal &amp; plant diseases/pests)</p>	<p>Warning - National notification (MPI)</p> <p>Actions.</p> <ul style="list-style-type: none"> <li>• Surveillance programmes for pests and diseases to contain the outbreak.</li> </ul>	<ul style="list-style-type: none"> <li>• Impact to native/indigenous species.</li> <li>• Impacts on agricultural businesses and communities.</li> </ul>
 <p><b>9. Tsunami</b></p>	<p>Warning - A long or strong earthquake, unusual changes to sea level, strange noise from the sea.</p> <p>Actions.</p> <ul style="list-style-type: none"> <li>• Communities from the nearby coastal areas (Aropaoanui &amp; Waipatiki) will evacuate to higher ground.</li> </ul>	<ul style="list-style-type: none"> <li>• Inundation of coastal areas.</li> <li>• Strain on inland community resources.</li> <li>• Large scale displacement.</li> <li>• Loss of water, electricity and communications.</li> <li>• Liquefaction (from a near-source earthquake).</li> <li>• Economic impacts.</li> </ul>
 <p><b>10. Hazardous Substances</b></p>	<p>Warning - FENZ warning.</p> <p>Actions.</p> <ul style="list-style-type: none"> <li>• Evacuate the immediate area.</li> <li>• Call 111 for assistance.</li> <li>• Identify the substance if safe to do so.</li> </ul>	<ul style="list-style-type: none"> <li>• Contamination of land.</li> <li>• Poisoning of people and animals.</li> <li>• Damage to crops.</li> <li>• Evacuation of affected areas.</li> </ul>
 <p><b>11. Structural Fire</b></p>	<p>Warning - Natural (Smoke). FENZ warning.</p> <p>Actions.</p> <ul style="list-style-type: none"> <li>• Evacuate to an unaffected area.</li> <li>• Preferably stay with friends or family out of hazardous area.</li> </ul>	<ul style="list-style-type: none"> <li>• Damage to buildings.</li> <li>• Restrictions to the areas people can access.</li> <li>• Impact on infrastructure, services, and commercial activities.</li> </ul>

# HAZARD RISK PROFILE & MAPS

## Earthquake Amplification



**Legend**

- Community Emergency Hubs
- Potential Community Hubs

**Earthquake Amplification**

- (High) Unconsolidated swamp, estuarine and lagoonal deposits and reclaimed land
- (Medium-high) Alluvial sand, silt, and gravel
- (Medium-low) Compact alluvial sand, silt, and gravel
- (Low) Bedrock / Regolith
- Faultlines
- Fault Avoidance Zones

**DISCLAIMER:** The Hastings District Council cannot guarantee that the data shown on this map is 100% accurate.

## VULNERABILITIES & VALUED STRENGTHS





	VULNERABILITIES	STRENGTHS
<b>Social / Cultural</b>	<ul style="list-style-type: none"> <li>○ Vulnerable people or people living alone known through the Community Hall Committee.</li> <li>○ Access to medication (prescriptions).</li> <li>○ Far away from Fire &amp; Emergency NZ (FENZ) stations in Putorino &amp; Bay View.</li> </ul>	<ul style="list-style-type: none"> <li>○ Skills in the community, including:               <ul style="list-style-type: none"> <li>○ Trades (Builders, Electricians, Plumbers).</li> <li>○ Farmers.</li> <li>○ Teachers.</li> <li>○ Contractors.</li> <li>○ Medical Professionals (Doctors, Nurses, Therapists).</li> </ul> </li> <li>○ Access to machinery, chainsaws, fuel supplies, and water tanks via farmers &amp; contractors.</li> </ul>
<b>Built</b>	<ul style="list-style-type: none"> <li>○ Bridges, culverts, roads, water supply: Road closures on SH2, Tangoio Settlement Road &amp; Waipunga Road.</li> <li>○ Earthquake rating of CEH building: &lt;34%.</li> </ul>	<ul style="list-style-type: none"> <li>○ Three access roads into area.</li> <li>○ Off grid properties.</li> <li>○ Three different power supplies into community.</li> <li>○ Closed airstrip.</li> <li>○ Community Hall to serve as a Community Emergency Hub (CEH).</li> <li>○ Access to power, fuel (petrol &amp; diesel) and communications at Community Emergency Hub.</li> </ul>
<b>Economic</b>	<ul style="list-style-type: none"> <li>○ Main productive activity: Farming (stock management &amp; feed).</li> </ul>	<ul style="list-style-type: none"> <li>○ Access to meat &amp; vegetables.</li> </ul>
<b>Natural</b>	<ul style="list-style-type: none"> <li>○ Main natural risk: Flooding at Aropaoanui.</li> <li>○ Large trees above the road on unstable ground (potential for closing roads).</li> </ul>	<ul style="list-style-type: none"> <li>○ Natural springs serve as alternative water supply.</li> </ul>

# COMMUNITY RESOURCES



**Our community is the best source of resources to help each other.**

**What are the items, skills, people, and places we can identify within our community to use?**

<b>RESOURCES &amp; CAPABILITY</b>	
<b>Places &amp; Spaces</b>	<ul style="list-style-type: none"> <li>○ Community Hall as a Community Emergency Hub [315 Kaiwaka Road, Kaiwaka; GPS Coordinates: -39.273081, 176.865937]</li> <li>○ The nearby closed airstrip could be used by helicopters to land and drop-off supplies.</li> </ul>
<b>Infrastructure</b>	<ul style="list-style-type: none"> <li>○ Private generators.</li> <li>○ Two alternative access roads into the area.</li> <li>○ Private water supplies.</li> <li>○ <b>HBRC local weather station:</b></li> </ul> <div style="display: flex; justify-content: space-around;">   </div> <ul style="list-style-type: none"> <li>○ Another <b>local weather station</b> along State Highway 2:</li> </ul> <div style="display: flex; justify-content: space-around;">   </div>
<b>Networks &amp; Groups of People</b>	<ul style="list-style-type: none"> <li>○ Community Hall Committee</li> </ul>
<b>Services in our Community</b>	<ul style="list-style-type: none"> <li>○ Residents with trades skills.</li> <li>○ Farmers &amp; contractors with diggers, tractors, bulldozers, bulk fuel supply and water tanks.</li> <li>○ First Aid kit at Community Hall.</li> <li>○ AED at Community Hall.</li> <li>○ Residents with Boats and Marine radios.</li> <li>○ Residents with generators &amp; Starlinks (3 or 4).</li> <li>○ Off the grid properties.</li> </ul>

## POTENTIAL IMPACTS & RESPONSES

IMPACT	HAZARD	RESPONSES
<b>Need to evacuate</b>	Tsunami, Storm/Flood, Fire, Volcanic Ash, Landslide	<ul style="list-style-type: none"> <li>• Grab bags prepared.</li> <li>• House/building security.</li> <li>• Community Emergency Hub location with basic supplies.</li> <li>• Community Emergency Hub location with communications.</li> </ul>
<b>Stuck at home</b>	Earthquake, Storm/Flood, Volcanic Ash, Pandemic, Landslide	<ul style="list-style-type: none"> <li>• Households have additional food, water &amp; medication supplies.</li> <li>• Connect through the Community Hall Committee.</li> <li>• Community Emergency Hub with communications.</li> </ul>
<b>Can't get home</b>	Earthquake, Tsunami, Storm/Flood, Fire, Volcanic Ash, Landslide	<ul style="list-style-type: none"> <li>• Pre-arranged plans including meeting points.</li> <li>• Communication through Community Emergency Hub network.</li> </ul>
<b>Injuries/ medical needs</b>	All	<ul style="list-style-type: none"> <li>• Households with trained first aiders and first aid supplies.</li> <li>• Community Emergency Hub first aid kit.</li> <li>• List of medical professionals.</li> </ul>
<b>No water</b>	Earthquake, Tsunami, Storm/Flood, Fire, Volcanic Ash	<ul style="list-style-type: none"> <li>• Household water tanks.</li> <li>• Household stores of bottled water.</li> <li>• River water (requires boiling).</li> </ul>
<b>No electricity</b>	Earthquake, Tsunami, Storm/Flood, Fire, Landslide	<ul style="list-style-type: none"> <li>• Household generators - held by many farmers.</li> <li>• Petrol supply from nearest petrol stations such as Bay View.</li> </ul>
<b>No communications (phone or internet)</b>	Earthquake, Tsunami, Storm/Flood, Fire, Volcanic Ash	<ul style="list-style-type: none"> <li>• Private Starlinks - residents prepared to share access with other locals.</li> <li>• Community Emergency Hub VHF radio.</li> </ul>
<b>Loss of road access</b>	Earthquake, Tsunami, Storm/Flood, Fire, Volcanic Ash, Landslide	<ul style="list-style-type: none"> <li>• Alternative access routes (refer to maps).</li> <li>• Farm machinery available to restore road access.</li> </ul>

## RESILIENCE TOOLS

TOOLS		STATUS
1.	Personal preparedness enablers: Household Plan & Grab & Go Bag.	In Progress
2.	Community resilience & hub training, including lanyards roles.	In Progress
3.	Community events - Friday nights (every third Friday) at the Kaiwaka Community Hall, Street events, Hall drop-in days.	Ongoing
4.	Social media: Community Messenger Group.	Ongoing
5.	A flyer with key information can be dropped-off in mailboxes by the Rural Delivery Postie.	In Progress
6.	Regular hub co-ordinator get-togethers.	In Progress

# STAY?

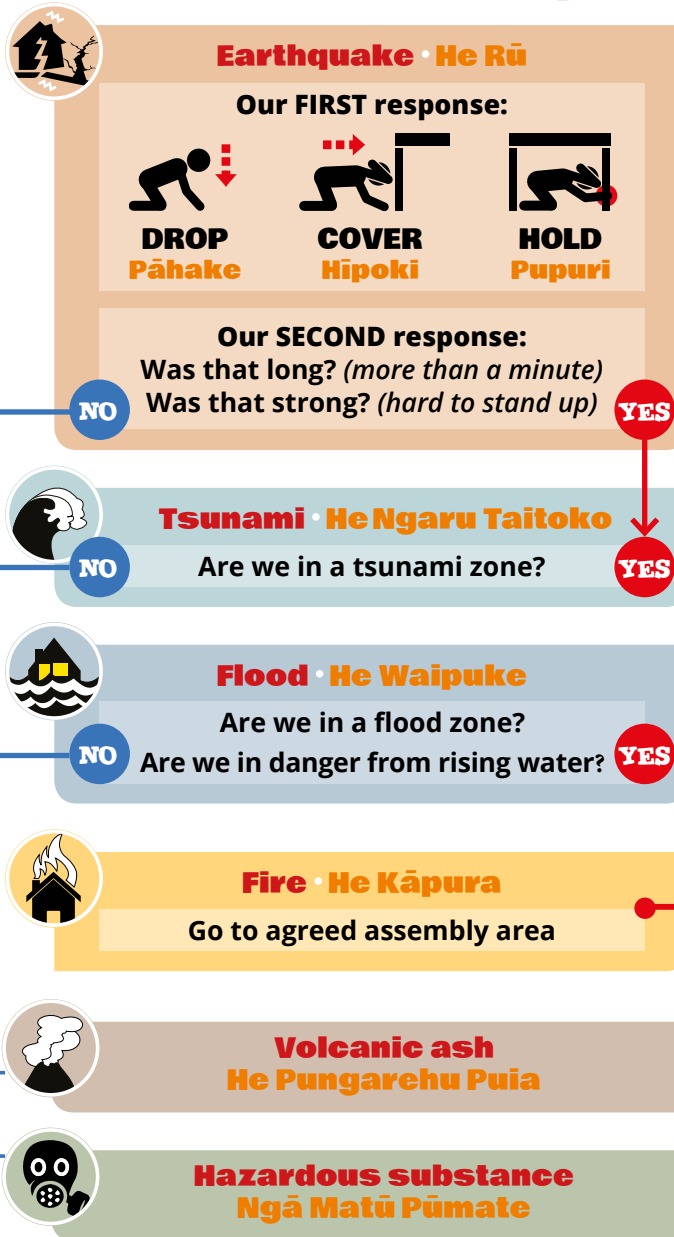
ME NOHO?

## SHELTER IN PLACE

Me Noho Ki Taua Wāhi



### Our hazard decision path



# OR GO?

ME HAERE RĀNEI?



## IN AN EMERGENCY YOU WILL NEED:



### AN EMERGENCY PLAN

Make a plan for your household, whānau and pets to get through an emergency, consider;

- Where will you meet or evacuate to?
  - How will you look after each other?
  - Who might need our help?
  - Who will we need to contact?
  - What will we do if we are stuck at home?
  - What will we do if we have no power, no water, no way to get information?
- 



### EMERGENCY SUPPLIES

You don't have to have them all in one place, but you might have to find them in a hurry and/or in the dark, store:

- Three litres of water per person per day.
  - First aid kit.
  - Long-lasting food that doesn't need cooking, or a way to safely cook or heat food without electricity, and extra fuel.
  - Consider also specific food needs of babies, children and pets.
  - Torch.
  - Emergency cash.
  - Half a tank of fuel in your vehicle.
  - Toilet paper and large plastic buckets for an emergency toilet.
  - Work gloves and a properly fitted mask.
- 



### EMERGENCY GRAB BAG

Pack your emergency grab bag with basic supplies including:

- Walking shoes, warm clothes, raincoat, and hat.
  - Water and snack food (remember babies and pets too).
  - Hand sanitizer & face mask.
  - Portable phone charger.
  - Cash.
  - Copies of important documents and Photo ID.
  - Medication.
  - Small first aid kit.
- 

**Remember your grab bag should be light enough that you can still carry it.**

---

# APPENDIX A: INTERNAL & EXTERNAL COMMUNICATION

## Communication: Internal

The following table lists the different methods the community can use to communicate with each other:

	AREA/GROUP	NEED/ISSUE	APPROACH
1.	Kaiwaka Tareha	Welfare checks on people in the community.	Community Messenger Group *

\* *Have a comprehensive community contact list in place.*

# APPENDIX A: INTERNAL & EXTERNAL COMMUNICATION

## Communication: Emergency Agencies

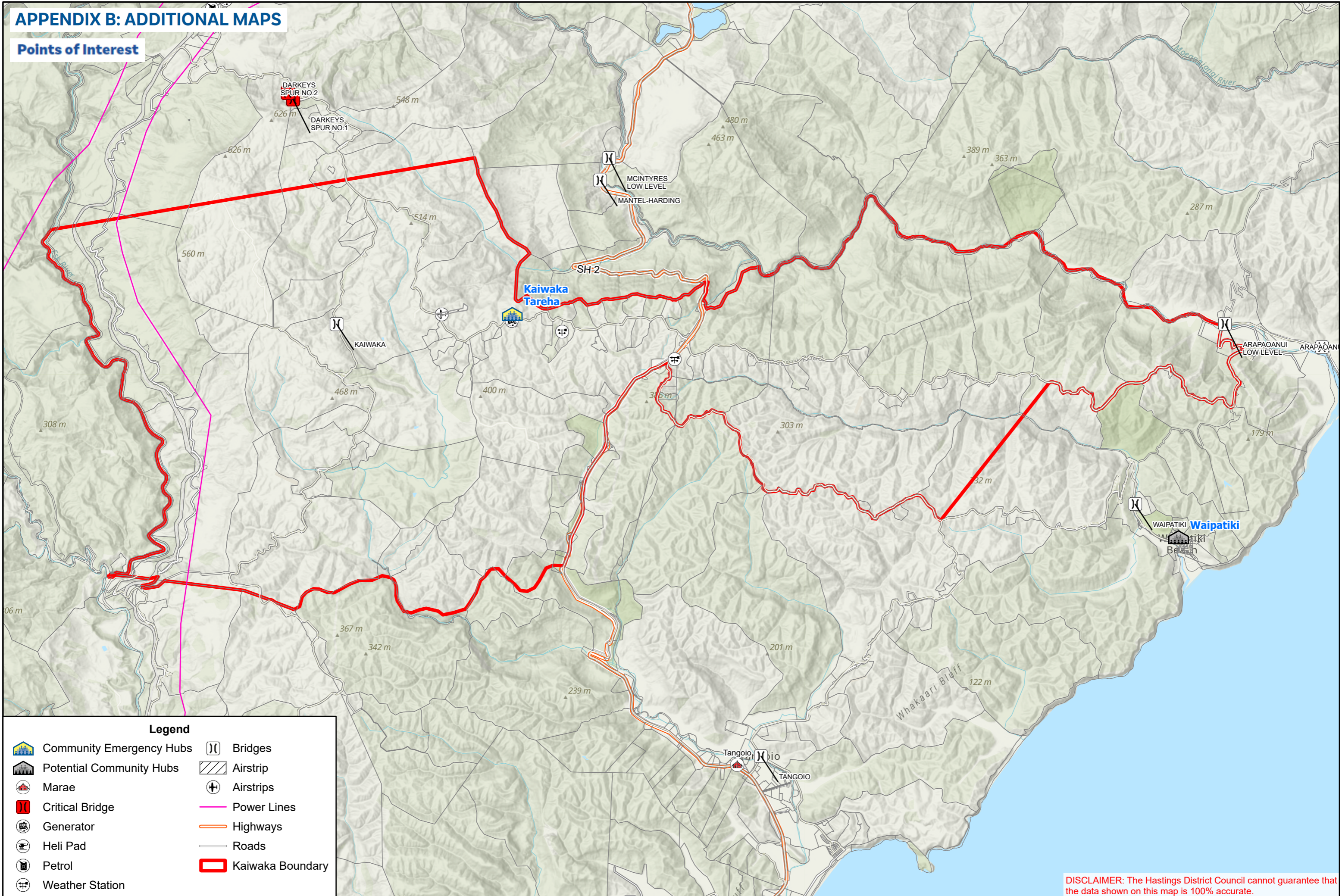
The following table lists the contact details for Emergency Agencies:

Monitor the following sources of information to stay informed:  
**Television | Radio** [Frequencies: 90.3FM, 89.5FM, 97.5FM, 94.5FM]  
**Online Websites & Social Media** (Official & Community Pages)  
**IMPORTANT:** Call **111** for all urgent or emergency situations.

AGENCY	NEED/ISSUE	CONTACT/SOURCES OF INFORMATION
<b>Police</b>	Risk to people or property	Urgent: Call 111 OR Non-urgent: Call 105 or online
<b>Fire &amp; Emergency New Zealand (FENZ)</b>	Risk to people or property	Call 111
<b>Ambulance (St John)</b>	Risk to people	Call 111
<b>Hawke's Bay Emergency Management Office</b>	Warnings, alerts, advice and key information before, during and after an emergency.	Online: <a href="https://www.hbemergency.govt.nz/">https://www.hbemergency.govt.nz/</a> OR Facebook – HB Civil Defence Emergency Management Group.
<b>Metservice</b>	Severe weather warnings, alerts.	Online <a href="https://www.metservice.com/warnings/home">https://www.metservice.com/warnings/home</a>
<b>Hastings District Council</b>	Status of: <ul style="list-style-type: none"> <li>Local roads (i.e. not state highways).</li> <li>Urban water supply.</li> <li>Urban wastewater (sewerage).</li> <li>Solid waste/rubbish collection and disposal.</li> </ul>	Call (06) 871 5000 (24/7) OR Email: <a href="mailto:customerservice@hdc.govt.nz">customerservice@hdc.govt.nz</a> (Monday to Friday 9am – 5pm) Facebook - Hastings District Council - Te Kaunihera ā-Rohe o Heretaunga Road status: <a href="https://www.hastingsdc.govt.nz/services/roads-and-streets/road-works">https://www.hastingsdc.govt.nz/services/roads-and-streets/road-works</a>
<b>New Zealand Transport Agency (NZTA) / Waka Kotahi</b>	Status of State Highways	Call: 0800 4 HIGHWAYS or (0800 44 44 49) Online: <a href="https://www.journeys.nzta.govt.nz/highway-conditions/">https://www.journeys.nzta.govt.nz/highway-conditions/</a> OR Facebook – NZ Transport Agency Waka Kotahi – Hawke's Bay & Gisborne
<b>Unison Networks</b>	Status of power supply	Call 0800 2 UNISON or 0800 2 86476 OR Online <a href="https://www.unison.co.nz/outages/">https://www.unison.co.nz/outages/</a>
<b>Hawke's Bay Regional Council (HBRC)</b>	Status of: <ul style="list-style-type: none"> <li>Rainfall.</li> <li>River levels and flows.</li> <li>Flood control and drainage.</li> <li>Air quality.</li> </ul>	Call (06) 835 9200 (24/7) OR 0800 108838 OR Email: <a href="mailto:info@hbrc.govt.nz">info@hbrc.govt.nz</a> (Monday to Friday 8am – 5pm) OR Facebook – Hawke's Bay Regional Council

# APPENDIX B: ADDITIONAL MAPS

## Points of Interest

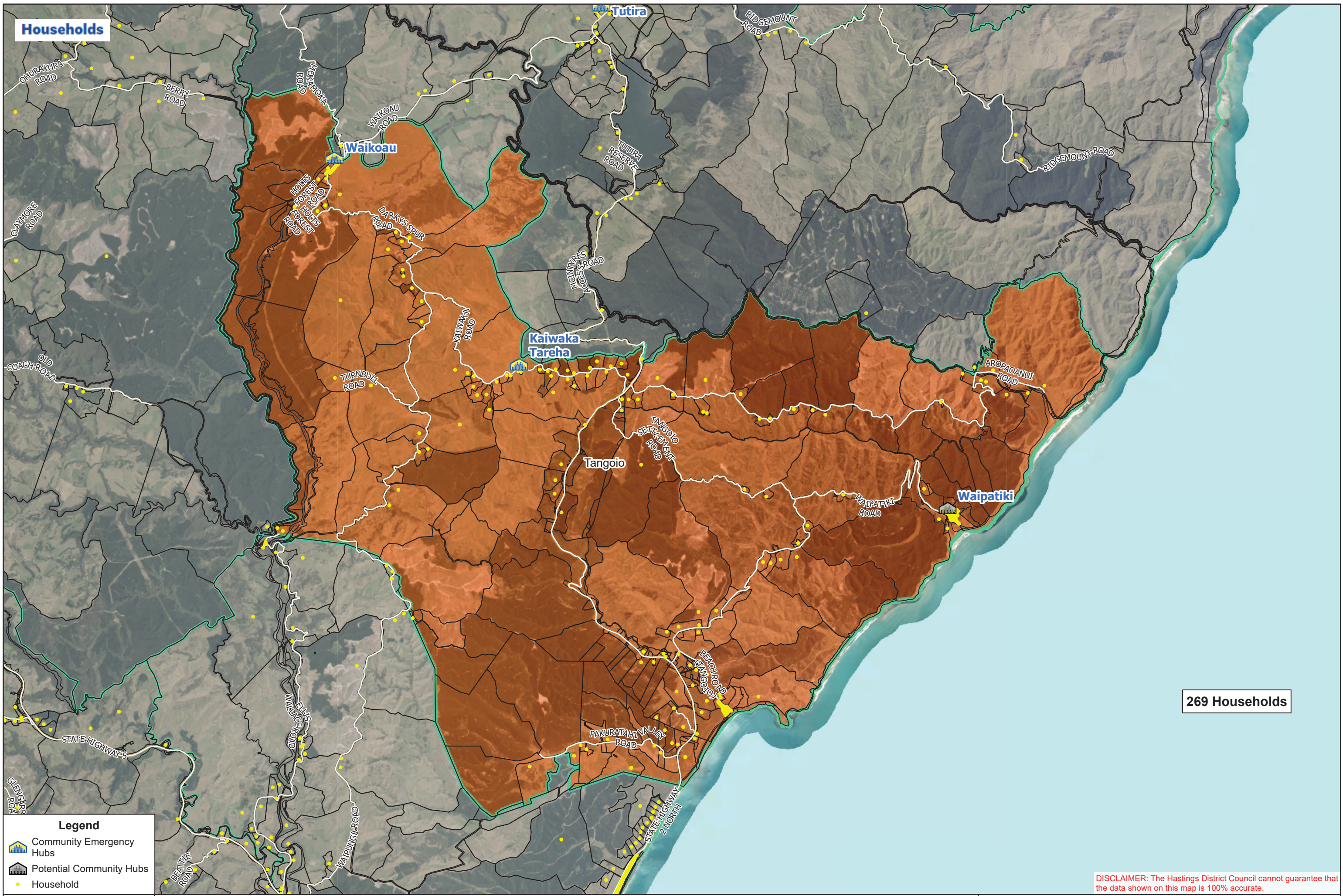


### Legend

- |  |                          |  |                  |
|--|--------------------------|--|------------------|
|  | Community Emergency Hubs |  | Bridges          |
|  | Potential Community Hubs |  | Airstrip         |
|  | Marae                    |  | Airstrips        |
|  | Critical Bridge          |  | Power Lines      |
|  | Generator                |  | Highways         |
|  | Heli Pad                 |  | Roads            |
|  | Petrol                   |  | Kaiwaka Boundary |
|  | Weather Station          |  |                  |

**DISCLAIMER:** The Hastings District Council cannot guarantee that the data shown on this map is 100% accurate.

Households



269 Households

**Legend**

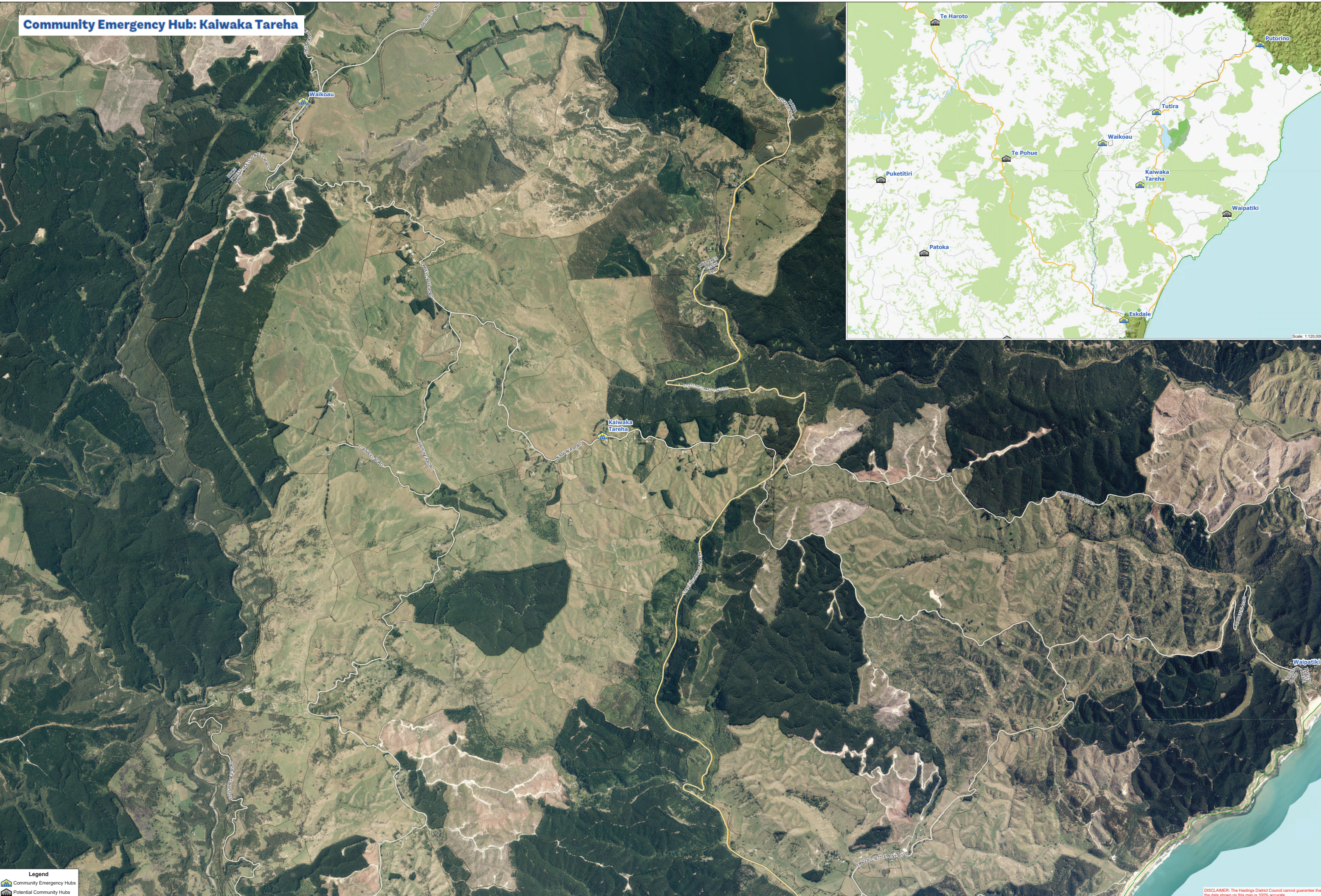
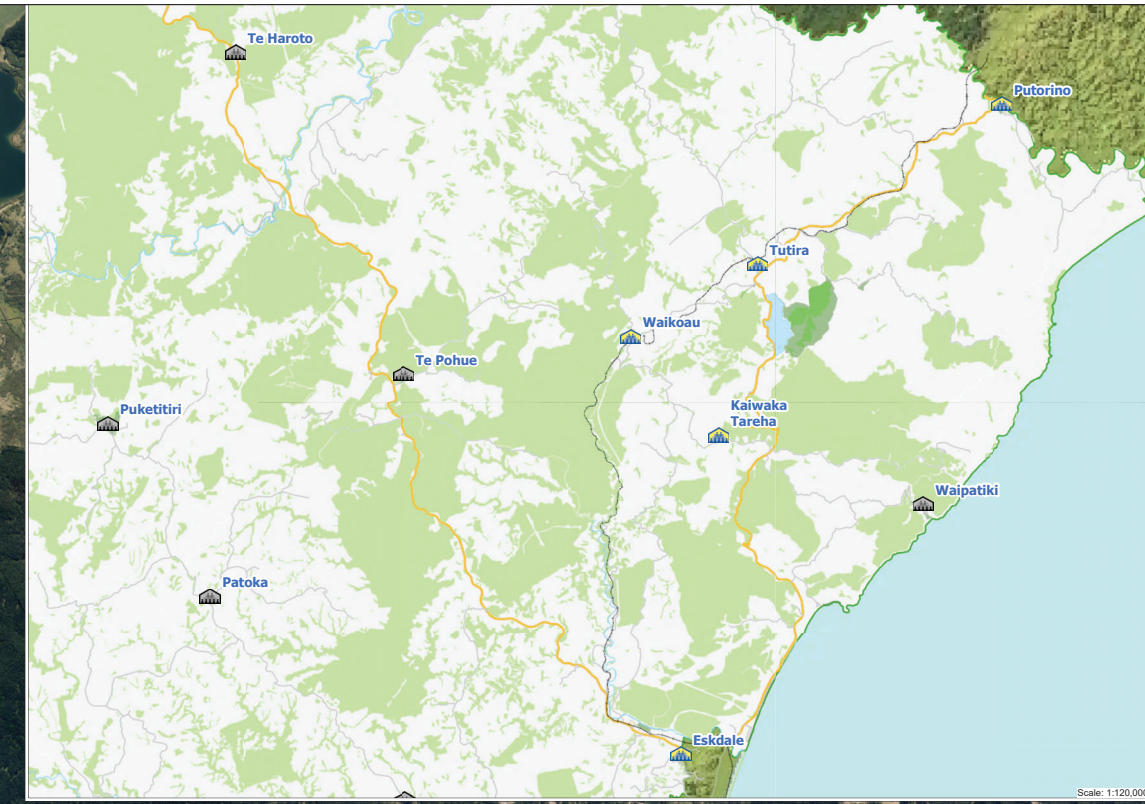
- Community Emergency Hubs
- Potential Community Hubs
- Household

Number of Households in Kaiwaka Tāreha

0 0.75 1.5 3  
Kilometers  
Scale: 1:50,000

DISCLAIMER: The Hastings District Council cannot guarantee that the data shown on this map is 100% accurate.

# Community Emergency Hub: Kaiwaka Tareha



**Legend**  
Community Emergency Hubs  
Potential Community Hubs

## Community Emergency Hub: Kaiwaka Tāreha

0 300 600 1,200  
Meters  
Scale: 1:15,000

Original Size: A0  
Date: Thursday, 23 October 2025  
Projection: NZTM / Datum: D\_NZGD\_2000  
Map Produced using ArcGIS Pro  
Emergency\_Hub\_Kaiwaka

DISCLAIMER: The Hastings District Council cannot guarantee that the data shown on this map is 100% accurate.