



HE MAHERE OHOTATA MŌ  
TE HAPORI

# Maraekākaho

## Community Resilience Plan



**HERETAUNGA  
HASTINGS** DISTRICT COUNCIL



HAWKE'S BAY  
EMERGENCY MANAGEMENT

GROUP

[hbemergency.govt.nz](http://hbemergency.govt.nz)

Date: 11 September 2025 Version: 2.0 Approved By:

Emergency Readiness & Business Continuity Advisor

# RĀRANGI TAKE

## Contents

### Kupu arataki

<b>INTRODUCTION</b>	<b>1</b>
What to do during and after an emergency	4
What hazards do we have?	6
Hazard profiles & maps	8
Strengths & vulnerabilities	11
Community resources & capability	12
Potential impacts & responses	13
Resilience tools	14
In an emergency you will need	16
Appendices & resources	17

# KUPU ARATAKI

## INTRODUCTION

The purpose of this Community Resilience Plan is to help our community to ensure measures are in place to help us look after each other before, during, and after an emergency.

This writing and information within this plan comes from our community.



## Description of our community

Maraekākaho is a mixed rural/urban (peri-urban) community. It is located roughly 20 minutes west of Hastings in Hawke's Bay, bordered by the Raukawa community to the east, Tikokino and Ongaonga to the south, and Kererū to the west under the Ruahine ranges. The community is made up of pastoral farms, lifestyle blocks, orchards, vineyards and wineries.

Maraekākaho is bordered by the Ngaruroro River to the north, the Ohara Stream to the west, Valley Road to the east and Te Onepu to the south.

The Ngaruroro River runs to the north of Maraekākaho, and the community is flanked on the south by steep hills. The east of the village is relatively flat, and predominantly rural until you reach Flaxmere and Hastings. The Ruahine Ranges are to the west of the community.

***He waka eke noa***  
***We are all working together***

This community includes the following areas:

- **Aorangi Road:** Entire length included.
- **Mangatahi Road:** Entire length included.
- **Tait Road:** Entire length included. Note that flooding can potentially isolate this road from SH50, cutting off access to the hub.
- **Salisbury Road:** From 47 to 1204, where the road becomes unsealed and may only be accessible by 4WD in wet weather.
- **State Highway 50:** From 4970 to 3130, starting at the Valley Road turnoff.
- **Whakapirau Road:** From 769 to 7, beginning at the SH50 turning.
- **Kererū Road:** From State Highway 50 (SH50) to the Kererū Gorge culvert. The culvert was reinstated in April 2025, after being destroyed during Cyclone Gabrielle.

### **Plan Principles:**

This plan is based on the following key principles:

- Life safety is paramount, and all actions should aim to achieve this outcome.
- The community is prepared to:
  - Self-evacuate as early as possible, or
  - Be self-sufficient for at least 14 days.
- Community support will be coordinated through the Community Emergency Hub at the Maraekākaho Hall.

***He waka eke noa  
We are all working together***

# Area Map



**Legend**

	Community Emergency Hubs		Heli Pad
	Potential Community Hubs		Main Bridge
	School		Neighbourhood Support
	Fire Station		Bridges
	Radio		Low Crossing
	First Aid		Power Lines
	Airstrips		Community Observed Cyclone Gabrielle Flooding
	Obsolete Airstrips		Maraekākaho Boundary

**DISCLAIMER:** The Hastings District Council cannot guarantee that the data shown on this map is 100% accurate.

# I TE WĀ O TE OHOTATA

## WHAT TO DO DURING AND AFTER AN EMERGENCY



### STEP 1

Try to stay calm, check yourself and others in your household for injuries, for minor injuries provide first aid, then assess your home for damage.

Is everything ok?

NO



### STEP 2

If you or anyone in your household have significant injuries call **111 immediately**. If your home is not safe, **evacuate immediately and call 111**.

If no phone is available, contact your Neighbourhood Support road leader for communications assistance.

YES



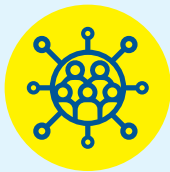
### STEP 3

Check on your immediate neighbours. Assess your surroundings for damage, check on your street & neighbourhood.

If safe to proceed  
go to **STEP 4**



A place for your community to gather and help each other out during an emergency.



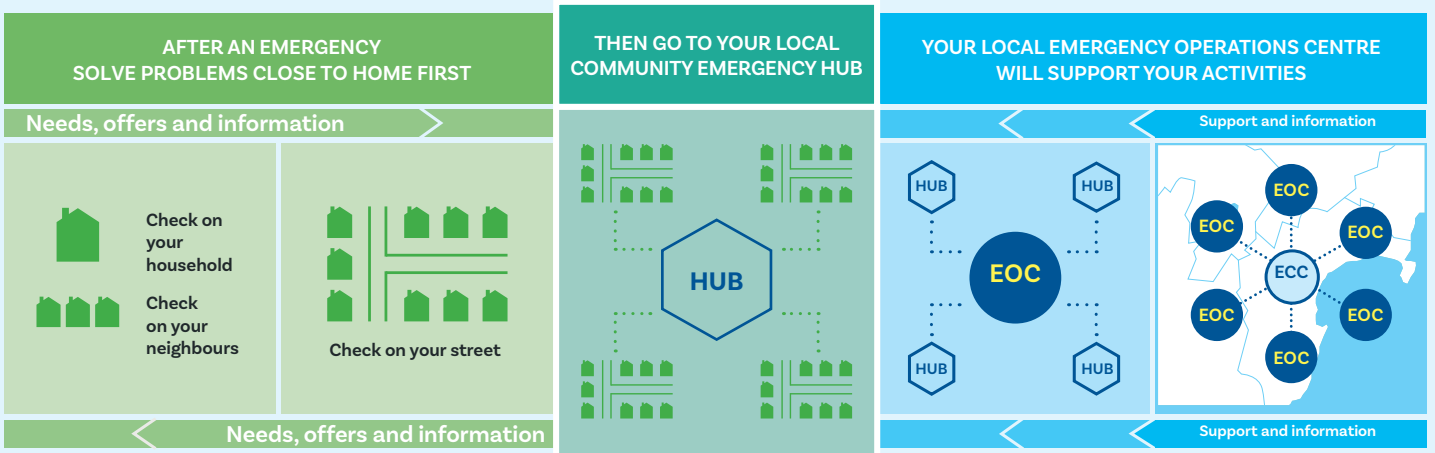
**STEP 4**

**Go to your local Community Emergency Hub.**

The Hub is a designated place where your community can gather, connect with one another, and solve problems using the skills and resources which already exist among your community.

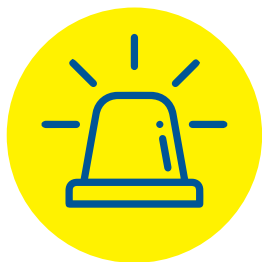
Community Emergency Hubs are a place for people to work together to solve problems locally while still coordinating with councils about big problems.

See page 21 for a map of your local Hub locations.






During an emergency, councils will stand up an Emergency Operations Centre (EOC) to respond. The EOC will give support and information back into the community, and give information to the regional Emergency Coordination Centre (ECC).



# WHAT HAZARDS DO WE HAVE?



Below is a list of the Hazards that could cause an emergency in our community. More information on these hazards, and what you can do before, during and after an emergency, can be found on the HB Emergency Website ([www.hbemergency.govt.nz](http://www.hbemergency.govt.nz)).

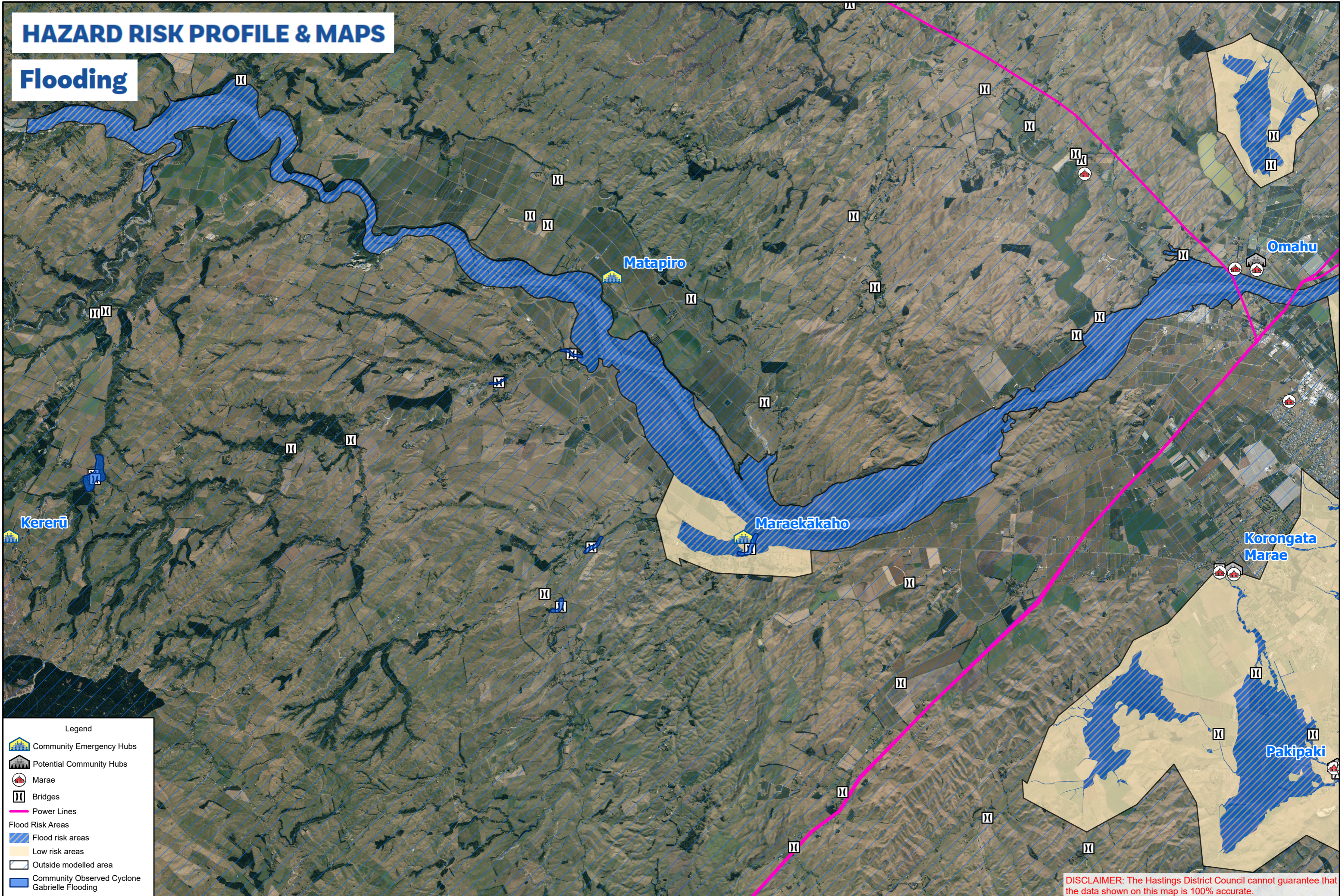
These hazards, perceived likelihood and impact, warning type, and immediate actions were decided with the community.

HAZARD (perceived likelihood & impact)	WARNING & ACTIONS	IMPACTS
 <p><b>1. Storm, Flood, and Severe Weather</b></p>	<p>Warning - MetService warning. Information disseminated by HB Emergency Management Office (EMO) and council.</p> <p>Actions:</p> <ul style="list-style-type: none"> <li>• Self-evacuate to high ground if you see floodwater rising.</li> <li>• Do not wait for an official warning.</li> <li>• Preferably stay with friends or family out of the hazardous area.</li> </ul>	<ul style="list-style-type: none"> <li>• Flooding, coastal inundation and landslides.</li> <li>• Damage from high wind.</li> <li>• Loss of electricity.</li> <li>• Evacuation of flood zones.</li> <li>• Isolated communities.</li> </ul>
 <p><b>2. Fire</b></p>	<p>Warning - Natural (Smoke). FENZ warning.</p> <p>Actions:</p> <ul style="list-style-type: none"> <li>• Evacuate to an unaffected area.</li> <li>• Preferably stay with friends or family out of the hazardous area.</li> </ul>	<ul style="list-style-type: none"> <li>• Damage to buildings.</li> <li>• Restrictions to the areas people can access.</li> <li>• Impact on infrastructure, services, and commercial actions.</li> </ul>
 <p><b>3. Earthquake</b></p>	<p>Warning - Earthquakes are rapid onset events and occur without warning.</p> <p>Actions:</p> <ul style="list-style-type: none"> <li>• Drop, Cover, Hold, including after following aftershocks.</li> </ul>	<ul style="list-style-type: none"> <li>• Damage to buildings, roads and bridges.</li> <li>• Loss of water, electricity, and communication.</li> <li>• Isolation and cut off communities.</li> </ul>

<b>HAZARD</b> (perceived likelihood & impact)	<b>WARNING &amp; ACTIONS</b>	<b>IMPACTS</b>
 <p><b>5. Volcanic Ashfall</b></p>	<p>Warning - Warning through GeoNet, HB EMO, and council.</p> <p>Actions:</p> <ul style="list-style-type: none"> <li>• Shelter in place.</li> <li>• Disconnect downpipes to tank water.</li> <li>• Seal windows and doors.</li> <li>• DO NOT use vehicles or machinery until ashfall stops.</li> </ul>	<ul style="list-style-type: none"> <li>• Damage to crops.</li> <li>• Health impacts and difficulty breathing if ash is inhaled.</li> <li>• Disruption to electricity, communications, and services.</li> <li>• Damage to vehicles, routes, and houses.</li> <li>• Health and/or wellbeing impacts to livestock.</li> </ul>
 <p><b>6. Landslide</b></p>	<p>Warning - Landslides can happen without warning but may be triggered by other hazards.</p> <p>Actions:</p> <ul style="list-style-type: none"> <li>• Evacuate to an unaffected area.</li> <li>• Preferably stay with friends or family out of the hazardous area.</li> </ul>	<ul style="list-style-type: none"> <li>• Blocked access to roads and properties.</li> <li>• Damaged critical infrastructure.</li> <li>• Further landslides may occur.</li> </ul>
 <p><b>7. Human Pandemic</b></p>	<p>Warning - Te Whatu Ora / Health NZ warning. Information shared by HB EMO and council.</p> <p>Actions:</p> <ul style="list-style-type: none"> <li>• Stay home if you are unwell.</li> <li>• Use hygiene measures including washing hands and using masks.</li> </ul>	<ul style="list-style-type: none"> <li>• Widespread illness.</li> <li>• Schools, businesses, and community spaces shut and/or face disruption of services.</li> </ul>
 <p><b>8. Hazardous Substances</b></p>	<p>Warning - FENZ warning.</p> <p>Actions:</p> <ul style="list-style-type: none"> <li>• Evacuate the immediate area.</li> <li>• Call 111 for assistance.</li> <li>• Identify the substance if safe to do so.</li> </ul>	<ul style="list-style-type: none"> <li>• Contamination of land.</li> <li>• Contamination of water (surface and groundwater).</li> <li>• Poisoning of people and animals.</li> <li>• Damage to crops.</li> <li>• Evacuation of affected areas.</li> </ul>

# HAZARD RISK PROFILE & MAPS

## Flooding

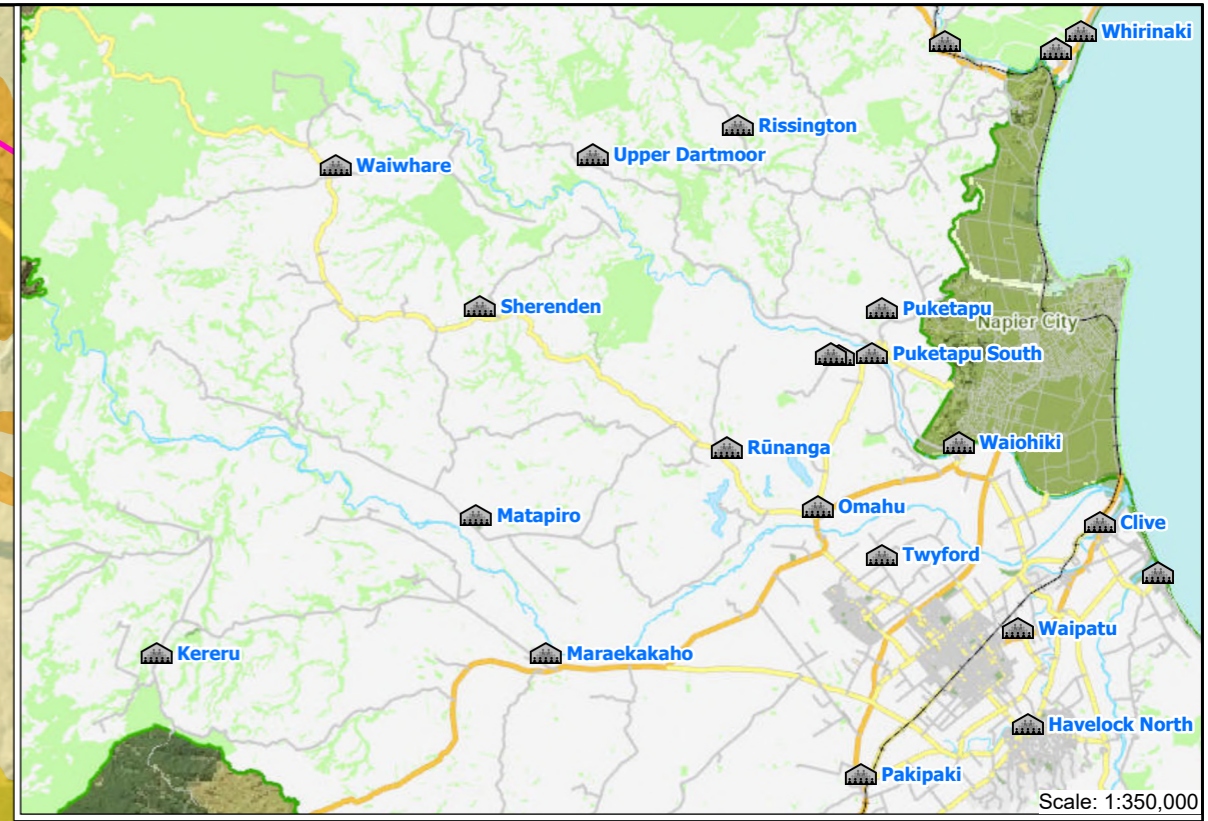
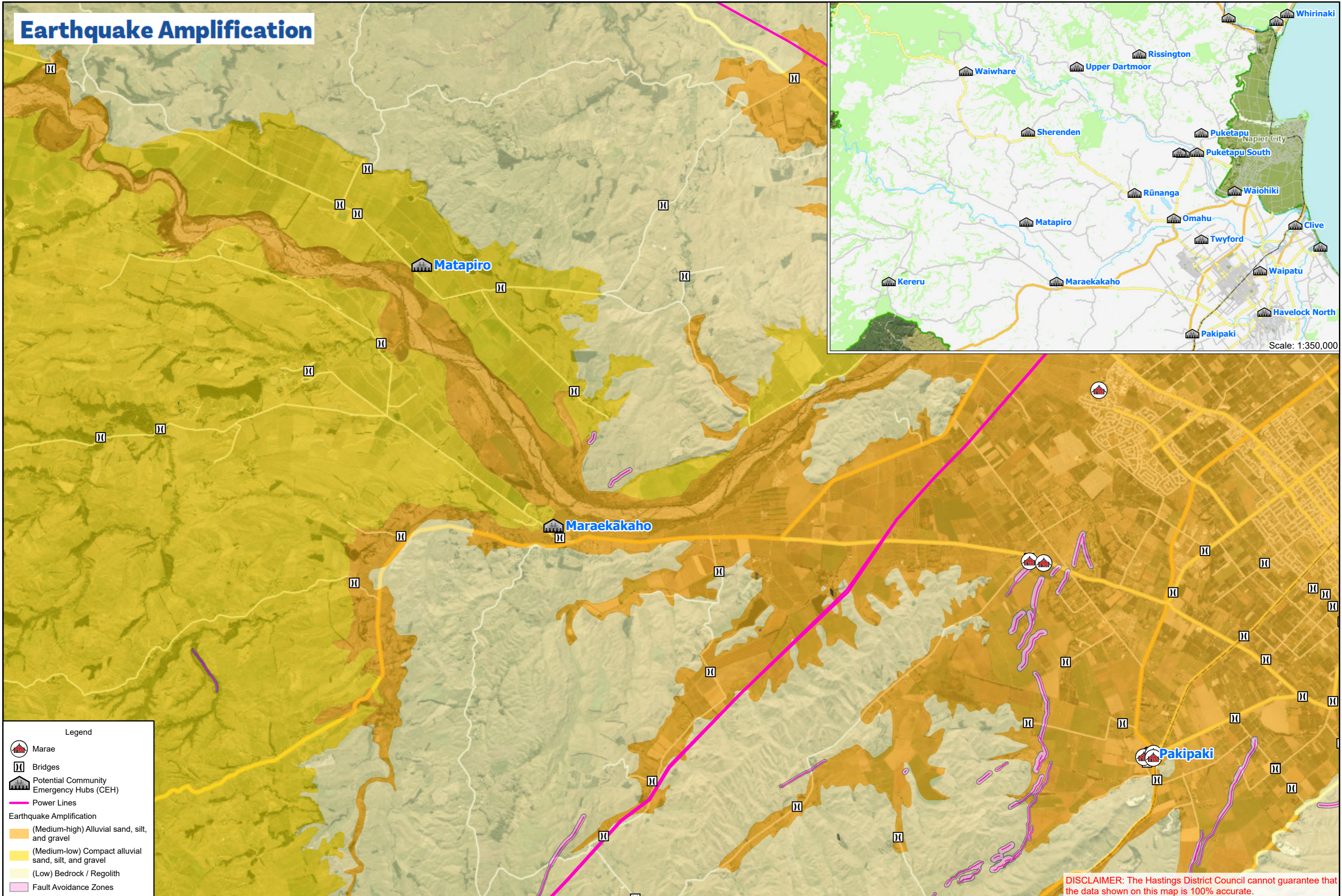


**Legend**

- Community Emergency Hubs
- Potential Community Hubs
- Marae
- Bridges
- Power Lines
- Flood Risk Areas**
- Flood risk areas
- Low risk areas
- Outside modelled area
- Community Observed Cyclone Gabrielle Flooding

**DISCLAIMER:** The Hastings District Council cannot guarantee that the data shown on this map is 100% accurate.

# Earthquake Amplification



**Legend**

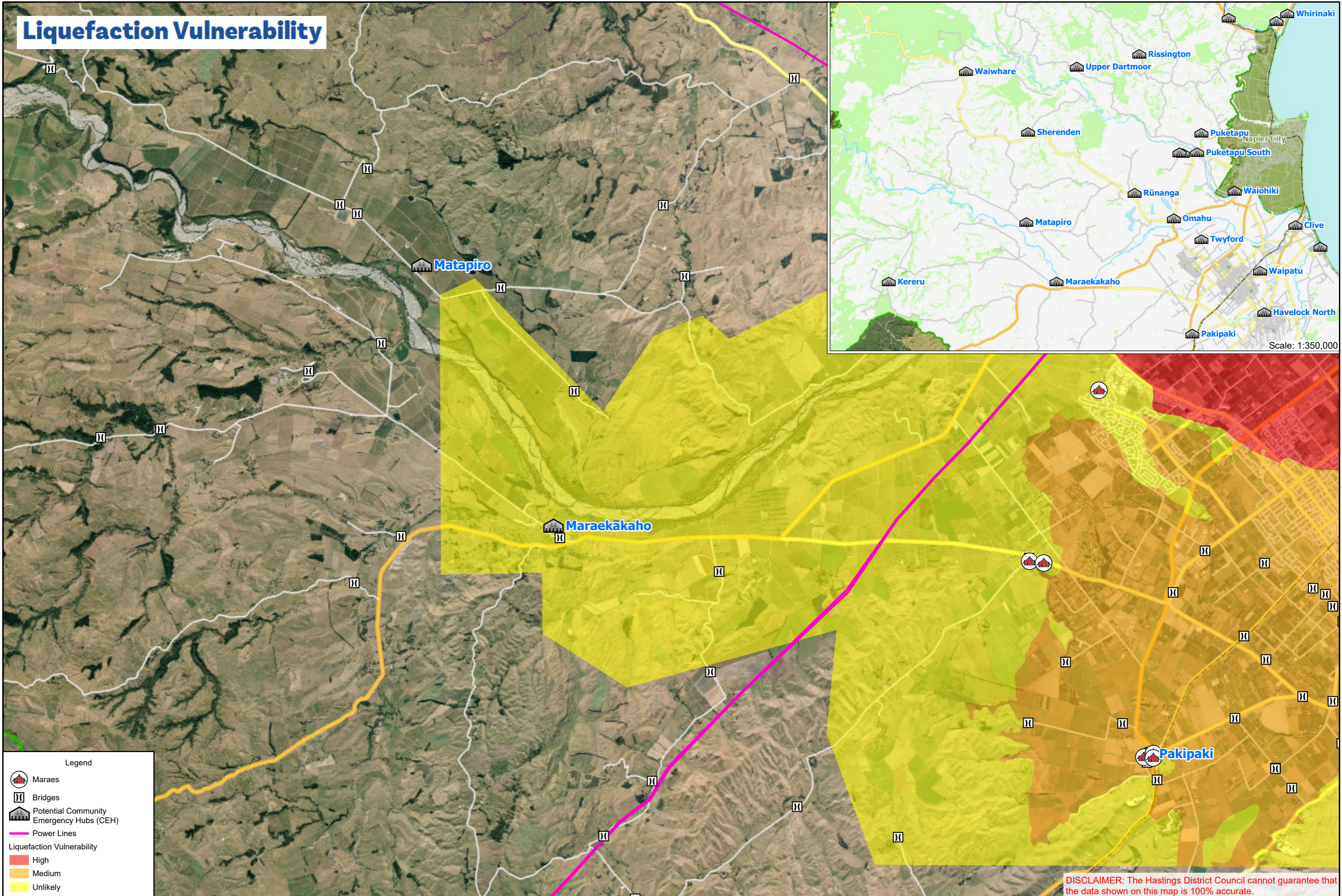
- Marae
- Bridges
- Potential Community Emergency Hubs (CEH)
- Power Lines

**Earthquake Amplification**

- (Medium-high) Alluvial sand, silt, and gravel
- (Medium-low) Compact alluvial sand, silt, and gravel
- (Low) Bedrock / Regolith
- Fault Avoidance Zones

**DISCLAIMER:** The Hastings District Council cannot guarantee that the data shown on this map is 100% accurate.

# Liquefaction Vulnerability



**Legend**

- Maraes
- Bridges
- Potential Community Emergency Hubs (CEH)
- Power Lines

**Liquefaction Vulnerability**

- High
- Medium
- Unlikely

**DISCLAIMER:** The Hastings District Council cannot guarantee that the data shown on this map is 100% accurate.

## VULNERABILITIES & VALUED STRENGTHS

	VULNERABILITIES	STRENGTHS
<b>Social / Cultural</b>	<ul style="list-style-type: none"> <li>○ Elderly, young families</li> <li>○ People requiring medical care/equipment.</li> <li>○ Small farm block owners needing help to move stock.</li> <li>○ Commuters cut off from Maraekākaho, or commuters from elsewhere stuck in Maraekākaho</li> <li>○ People living alone</li> </ul>	<ul style="list-style-type: none"> <li>○ Skills in the community, including: <ul style="list-style-type: none"> <li>● Trades (Builders, Electricians, Plumbers)</li> <li>● Farmers</li> <li>● Teachers</li> <li>● Contractors</li> <li>● Medical Professionals (Doctors, Nurses, Therapists)</li> <li>● Fuel/Mechanical expertise</li> </ul> </li> <li>○ Fire &amp; Emergency NZ volunteers</li> <li>○ Neighbourhood Support group</li> </ul>
<b>Built</b>	<ul style="list-style-type: none"> <li>○ Prone to closures/flooding: <ul style="list-style-type: none"> <li>● Aorangi, Mangatahi and Tait, Kererū Gorge, lower Kererū, lower Salisbury Roads</li> </ul> </li> <li>○ Prone to slips: <ul style="list-style-type: none"> <li>● Salisbury Road, upper Kererū Road, SH 50 south of the Whakapirau Road intersection, SH 50 south of Glenorchy Station</li> </ul> </li> </ul>	<ul style="list-style-type: none"> <li>○ Maraekākaho Hall with solar power, potable water and wastewater systems</li> <li>○ Kitchen facilities in hall</li> <li>○ Large car park</li> <li>○ Homes</li> <li>○ School/Kindergarten+</li> </ul>
<b>Economic</b>	<ul style="list-style-type: none"> <li>○ Livestock farming</li> <li>○ Viticulture</li> <li>○ Pastoral farming</li> <li>○ Horticulture</li> </ul>	<ul style="list-style-type: none"> <li>○ Ample supply of food (farming, agricultural area)</li> <li>○ Access to VHF radios</li> </ul>
<b>Natural</b>	<ul style="list-style-type: none"> <li>○ Erosion causing slips, dropouts, etc.</li> <li>○ Wooded area vulnerable to wildfire in dry conditions</li> <li>○ Proximity to river can result in flooding during extreme downfalls</li> <li>○ High winds can impact power lines &amp; cause trees to fall</li> </ul>	<ul style="list-style-type: none"> <li>○ Large paddocks for stock refuge</li> <li>○ Dams and streams for short-term stock water</li> <li>○ Hills to evacuate to in event of flooding</li> </ul>

## COMMUNITY RESOURCES



**Our community is the best source of resources to help each other.**

**What are the items, skills, people, and places we can identify within our community to use?**

<b>RESOURCES &amp; CAPABILITY</b>	
<b>Places &amp; Spaces</b>	<ul style="list-style-type: none"> <li>○ Maraekākaho Hall, 64 Kererū Road [GPS Coordinates: -39.64868, 176.61870]</li> <li>○ Maraekākaho Fire Station, 64 Kererū Road</li> <li>○ Maraekākaho School, 68 Kererū Road [GPS Coordinates: -39.64843, 176.61795]</li> <li>○ Various small/boutique accommodation options, including bed and breakfasts, short-term rental properties, and glamping sites</li> <li>○ Hospitality offerings, including wineries and event venues</li> </ul>
<b>Infrastructure</b>	<ul style="list-style-type: none"> <li>○ Solar panels installed on Maraekākaho Hall</li> <li>○ Water tanks widespread throughout area</li> <li>○ Resilient power at Maraekākaho Hall and local fire shed</li> <li>○ Potable water available at Maraekākaho Hall</li> <li>○ x4 EV charging stations at 2091 Maraekākāho Rd</li> </ul>
<b>Networks &amp; Groups of People</b>	<ul style="list-style-type: none"> <li>○ Focus Maraekākaho - Maraekākaho Hall Trust</li> <li>○ Neighbourhood Support network</li> <li>○ FENZ</li> <li>○ Quarry</li> <li>○ Farmers</li> <li>○ Orchardists, viticulturists, wineries</li> <li>○ Maraekākaho Pony Club</li> <li>○ Maraekākaho Cricket Club</li> <li>○ School and Gumboots parents' networks</li> </ul>
<b>Services in our Community</b>	<ul style="list-style-type: none"> <li>○ First Aid kits: Maraekākakho Hall, School, fire shed, Neighbourhood Support road leaders.</li> <li>○ AED Locations: Community Fire Station (24/7), others available around the community (refer to AED Locations app or website)</li> <li>○ Starlink terminal in FENZ station, Wireless broadband at Maraekākaho Hall</li> <li>○ VHF radios with Neighbourhood Support road leads, at Maraekākaho Hall and local fire brigade volunteers</li> </ul>

## POTENTIAL IMPACTS & RESPONSES

IMPACT	HAZARD	RESPONSES
<b>Need to evacuate</b>	Storm/Flood, Fire, Volcanic Ash, Landslide, Hazardous Substances (localised)	<ul style="list-style-type: none"> <li>• Grab bags prepared.</li> <li>• House/building security.</li> <li>• Community Emergency Hub location with basic supplies and communications.</li> </ul>
<b>Stuck at home</b>	Earthquake, Storm/Flood, Volcanic Ash, Pandemic, Landslide	<ul style="list-style-type: none"> <li>• Households have additional food, water, medication supplies and battery-operated radios.</li> <li>• Connect through the Neighbourhood Support Network and community Facebook pages, if available.</li> <li>• Community Emergency Hub with communications.</li> </ul>
<b>Can't get home</b>	Earthquake, Storm/Flood, Fire, Volcanic Ash, Landslide	<ul style="list-style-type: none"> <li>• Pre-arranged plans including meeting points.</li> <li>• Communication through Community Emergency Hub network, email, WhatsApp groups, and community Facebook pages, if available.</li> </ul>
<b>Injuries/ medical needs</b>	All	<ul style="list-style-type: none"> <li>• Neighbourhoods with trained first aiders and first aid supplies.</li> <li>• Community Emergency Hub first aid kit and medical team lead person.</li> <li>• Local medical professionals, coordinated through Neighbourhood Support or the Community Emergency Hub</li> <li>• Maraekakaho Fire Brigade</li> </ul>
<b>No water</b>	Earthquake, Storm/Flood, Landslide, Fire, Volcanic Ash	<ul style="list-style-type: none"> <li>• Household water tanks.</li> <li>• Household stores of bottled water.</li> <li>• River water (requires boiling).</li> <li>• Maraekākaho Hall has a resilient supply of potable water.</li> </ul>
<b>No electricity</b>	Earthquake, Storm/Flood, Fire, Landslide, High Winds	<ul style="list-style-type: none"> <li>• Household generators – held by many households.</li> <li>• Resilient power at Maraekākaho Hall and local fire shed.</li> </ul>
<b>No communications (phone or internet)</b>	Earthquake, Landslide, Storm/Flood, Fire, Volcanic Ash	<ul style="list-style-type: none"> <li>• Wireless broadband in hall, Starlink terminal in FENZ station"</li> <li>• Community Emergency Hub VHF radio.</li> <li>• Neighbourhood Support network VHF radios and resilient internet (Starlink and wireless broadband).</li> </ul>
<b>Loss of road access</b>	Earthquake, Storm/Flood, Fire, Volcanic Ash, Landslide, High Winds	<ul style="list-style-type: none"> <li>• Farm, contractor, quarry machinery available to restore road access.</li> </ul>

## RESILIENCE TOOLS

TOOLS		STATUS
1.	Personal preparedness enablers: Household Plan & Grab & Go Bag.	In Progress
2.	Community resilience & hub training, including specific hub roles.	Ongoing
3.	Community events - Street events, Hall drop-in days.	Ongoing
4.	Social media: <ul style="list-style-type: none"> <li>• Maraekākaho &amp; Surrounds Community Page (Facebook)</li> <li>• Maraekākaho School (Facebook)</li> <li>• Focus Maraekākaho (Facebook)</li> <li>• Maraekākaho Hall (Facebook)</li> </ul>	Ongoing
5.	Regular hub co-ordinator get-togethers.	Ongoing

# STAY?

ME NOHO?

## SHELTER IN PLACE

Me Noho Ki Taua Wāhi



### Our hazard decision path



#### Earthquake • He Rū

Our FIRST response:



**DROP**  
Pāhake



**COVER**  
Hipoki



**HOLD**  
Pupuri

Our SECOND response:

Was that long? (more than a minute)  
Was that strong? (hard to stand up)

NO

YES



#### Tsunami • He Ngaru Taitoko

Are we in a tsunami zone?

NO

YES



#### Flood • He Waipuke

Are we in a flood zone?

NO

Are we in danger from rising water?

YES



#### Fire • He Kāpura

Go to agreed assembly area



#### Volcanic ash He Pungarehu Puia



#### Hazardous substance Ngā Matū Pūmate

# OR GO?

ME HAERE RĀNEI?



Take the designated route to our safe location.

## EVACUATE

Me Haere



## IN AN EMERGENCY YOU WILL NEED:



### AN EMERGENCY PLAN

Make a plan for your household, whānau and pets to get through an emergency, consider;

- Where will you meet or evacuate to?
  - How will you look after each other?
  - Who might need our help?
  - Who will we need to contact?
  - What will we do if we are stuck at home?
  - What will we do if we have no power, no water, no way to get information?
- 



### EMERGENCY SUPPLIES

You don't have to have them all in one place, but you might have to find them in a hurry and/or in the dark, store:

- Three litres of water per person per day.
  - First aid kit.
  - Long-lasting food that doesn't need cooking, or a way to safely cook or heat food without electricity, and extra fuel.
  - Consider also specific food needs of babies, children and pets.
  - Torch.
  - Emergency cash.
  - Half a tank of fuel in your vehicle.
  - Toilet paper and large plastic buckets for an emergency toilet.
  - Work gloves and a properly fitted mask.
- 



### EMERGENCY GRAB BAG

Pack your emergency grab bag with basic supplies including:

- Walking shoes, warm clothes, raincoat, and hat.
  - Water and snack food (remember babies and pets too).
  - Hand sanitizer & face mask.
  - Portable phone charger.
  - Cash.
  - Copies of important documents and Photo ID.
  - Medication.
  - Small first aid kit.
- 

**Remember your grab bag should be light enough that you can still carry it.**

---

# APPENDIX A: INTERNAL & EXTERNAL COMMUNICATION

## Communication: Internal

The following table lists the different methods the community can use to communicate with each other:

AREA/GROUP	NEED/ISSUE	APPROACH
1. Neighbourhood Support Road Leads	Isolation of individual roads / neighbourhoods from Community Emergency Hub.	Local VHF radios.
2. Neighbourhood Support Network	Welfare checks on people in the community.	Phone call tree run by Neighbourhood Support network contacts.
3. All Maraekākaho residents	Internal community connection.	In person contact - walk, drive or ride to others.
4. Community Emergency Hub <i>* when active in an emergency</i>	Connection with HDC for support and information sharing.	Phone, email and VHF radio connections into the HDC Emergency Operations Centre.
5. Maraekākaho Fire Brigade	Communication with Fire & Emergency NZ.	Radio communications.
6. All Maraekākaho residents	Resilient external personal and community communications and information sourcing.	Wireless broadband in Maraekākaho Hall, Starlink in FENZ station, household Starlinks.

# APPENDIX A: INTERNAL & EXTERNAL COMMUNICATION

## Communication: Emergency Agencies

The following table lists the contact details for Emergency Agencies:

Monitor the following sources of information to stay informed:

**Television | Radio** [Frequencies: 90.3FM, 89.5FM, 97.5FM, 94.5FM]

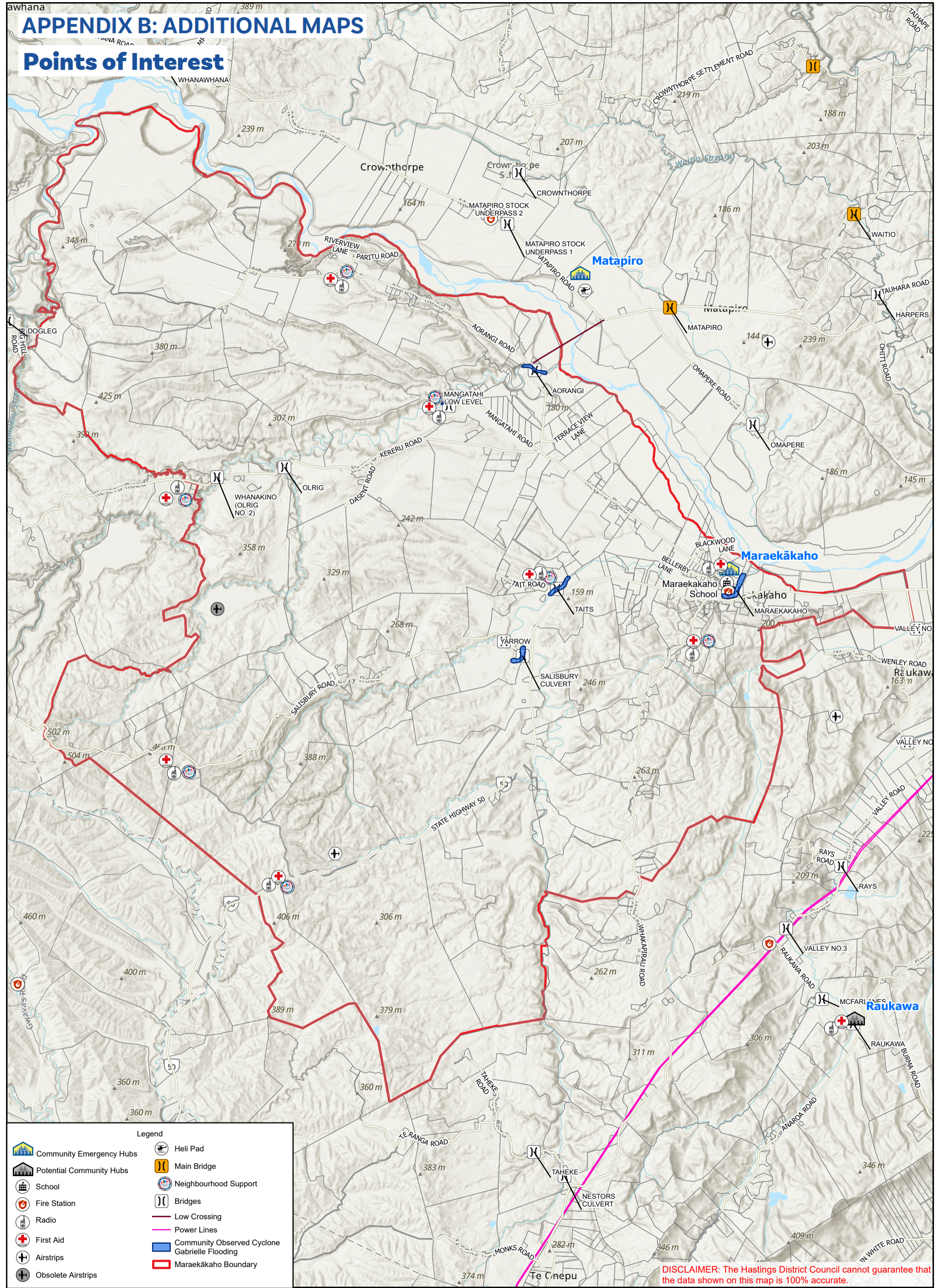
**Online Websites & Social Media** (Official & Community Pages)

**IMPORTANT:** Call **111** for all urgent or emergency situations.

AGENCY	NEED/ISSUE	CONTACT/SOURCES OF INFORMATION
<b>Police</b>	Risk to people or property.	Urgent: Call 111 OR Non-urgent: Call 105 or online
<b>Fire &amp; Emergency New Zealand (FENZ)</b>	Risk to people or property.	Call 111
<b>Ambulance (St John)</b>	Risk to people.	Call 111
<b>Hawke's Bay Emergency Management Office</b>	Warnings, alerts, advice and key information before, during and after an emergency.	Online: <a href="https://www.hbemergency.govt.nz/">https://www.hbemergency.govt.nz/</a> OR Facebook – HB Civil Defence Emergency Management Group.
<b>MetService</b>	Severe weather warnings, alerts.	Online <a href="https://www.metservice.com/warnings/home">https://www.metservice.com/warnings/home</a>
<b>Hastings District Council</b>	Status of: <ul style="list-style-type: none"> <li>Local roads (i.e. not state highways).</li> <li>Urban water supply.</li> <li>Urban wastewater (sewerage).</li> <li>Solid waste/rubbish collection and disposal.</li> </ul>	Call (06) 871 5000 (24/7) OR Email: <a href="mailto:customerservice@hdc.govt.nz">customerservice@hdc.govt.nz</a> (Monday to Friday 9am – 5pm) Facebook - Hastings District Council - Te Kaunihera ā-Rohe o Heretaunga Road status: <a href="https://www.hastingsdc.govt.nz/services/roads-and-streets/road-works">https://www.hastingsdc.govt.nz/services/roads-and-streets/road-works</a>
<b>New Zealand Transport Agency (NZTA) / Waka Kotahi</b>	Status of State Highways.	Call: 0800 4 HIGHWAYS or (0800 44 44 49) Online: <a href="https://www.journeys.nzta.govt.nz/highway-conditions/">https://www.journeys.nzta.govt.nz/highway-conditions/</a> OR Facebook – NZ Transport Agency Waka Kotahi – Hawke's Bay & Gisborne
<b>Unison Networks</b>	Status of power supply.	Call 0800 2 UNISON or 0800 2 86476 OR Online <a href="https://www.unison.co.nz/outages/">https://www.unison.co.nz/outages/</a>
<b>Hawke's Bay Regional Council (HBRC)</b>	Status of: <ul style="list-style-type: none"> <li>Rainfall.</li> <li>River levels and flows.</li> <li>Flood control and drainage.</li> <li>Air quality.</li> </ul>	Call (06) 835 9200 (24/7) OR 0800 108 838 OR Email: <a href="mailto:info@hbrc.govt.nz">info@hbrc.govt.nz</a> (Monday to Friday 8am – 5pm) OR Facebook – Hawke's Bay Regional Council

# APPENDIX B: ADDITIONAL MAPS

## Points of Interest



**Legend**

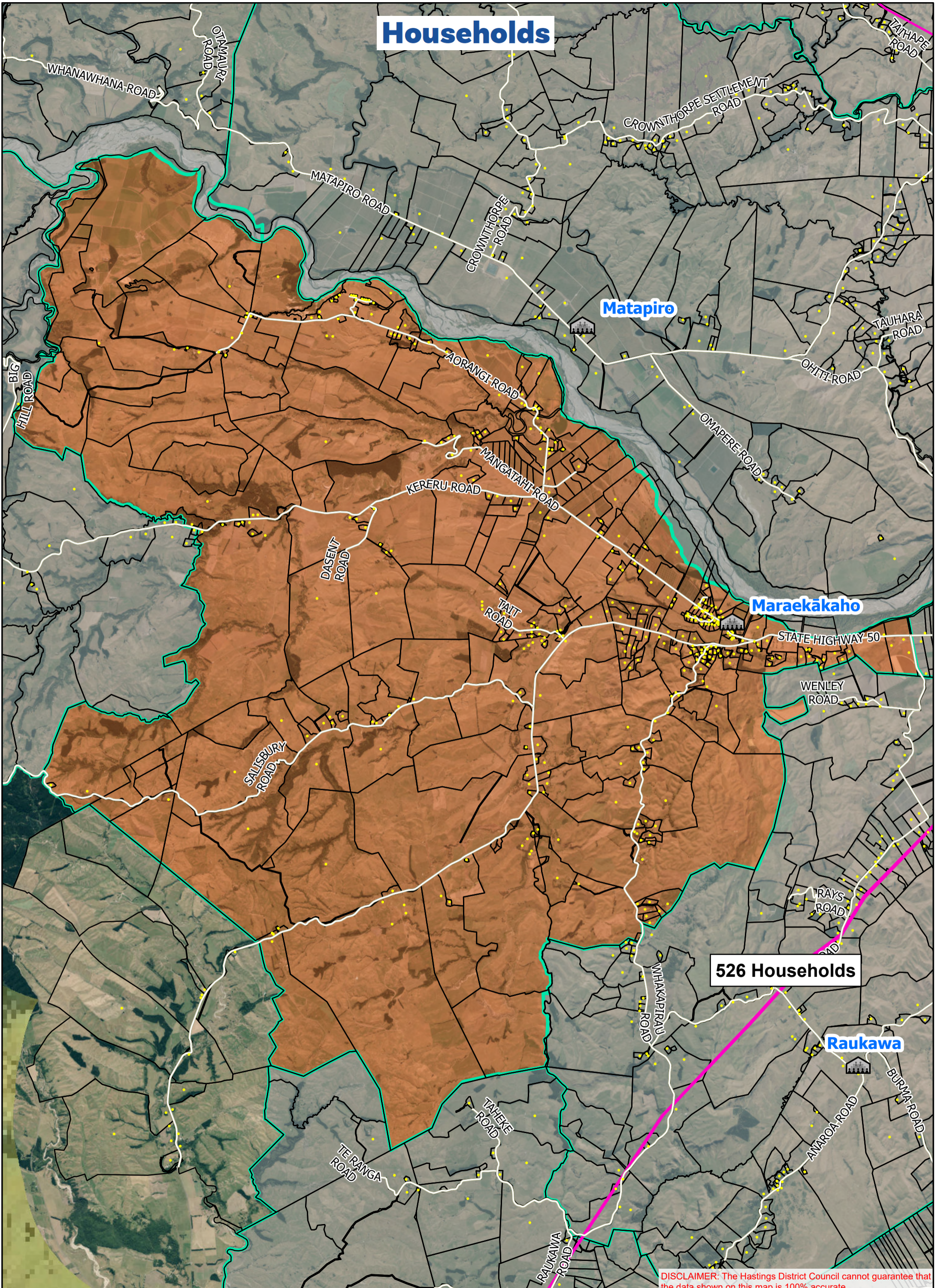

**Overview of Maraekākaho Area**  
Points of Interest

Scale: 1:70,000

0 600 1,200 2,400  
Meters

**DISCLAIMER:** The Hastings District Council cannot guarantee that the data shown on this map is 100% accurate.

# Households

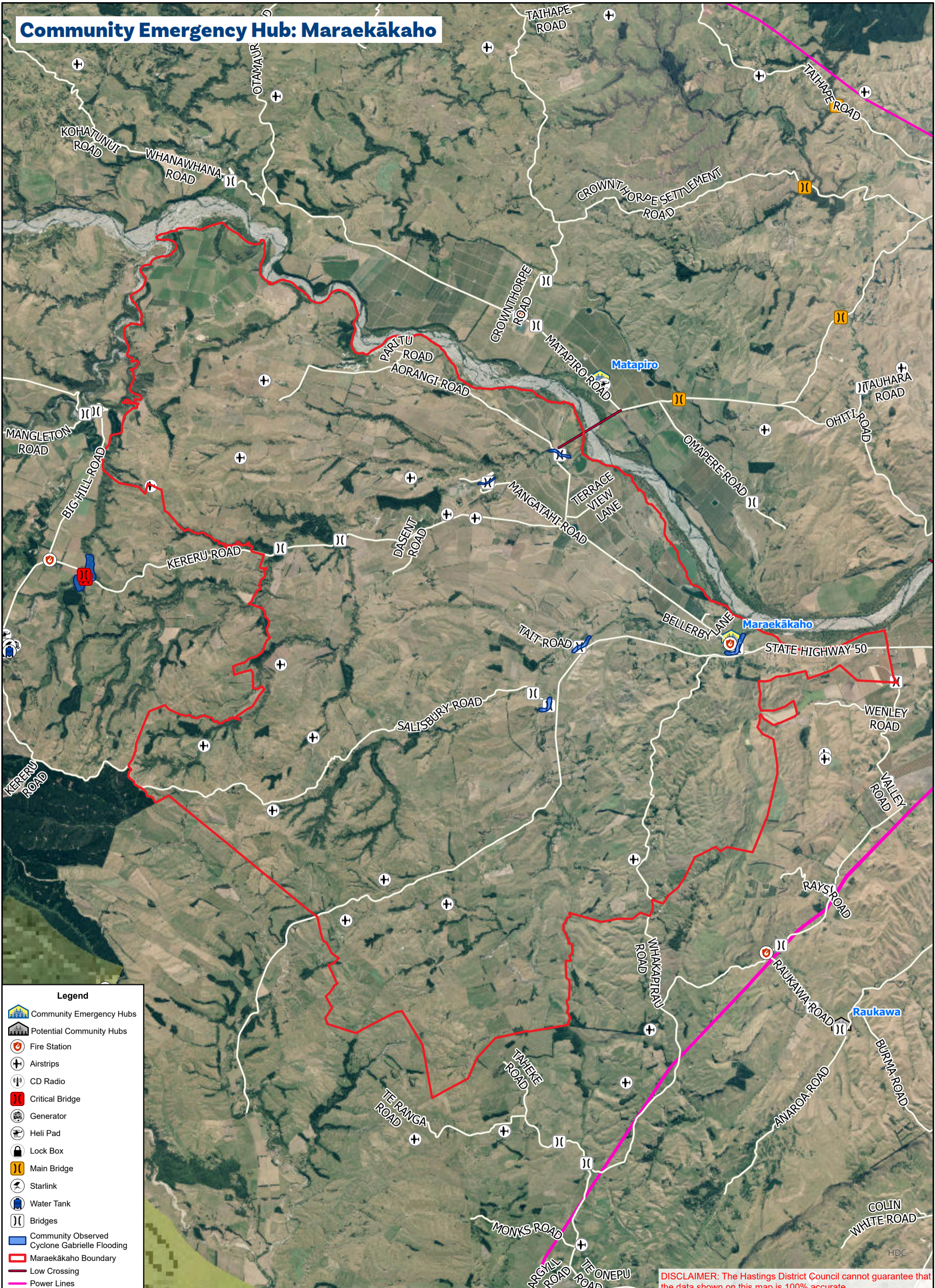


526 Households

DISCLAIMER: The Hastings District Council cannot guarantee that the data shown on this map is 100% accurate.



# Community Emergency Hub: Maraekākaho



**Legend**

- Community Emergency Hubs
- Potential Community Hubs
- Fire Station
- Airstrips
- CD Radio
- Critical Bridge
- Generator
- Heli Pad
- Lock Box
- Main Bridge
- Starlink
- Water Tank
- Bridges
- Community Observed Cyclone Gabrielle Flooding
- Maraekākaho Boundary
- Low Crossing
- Power Lines

DISCLAIMER: The Hastings District Council cannot guarantee that the data shown on this map is 100% accurate.

