



HE MAHERE OHOTATA MŌ
TE HAPORI

Puketapu South Area

(Moteo - Timi Kara - The Red Shed)

Community Resilience Plan



**HERETAUNGA
HASTINGS** DISTRICT COUNCIL



HAWKE'S BAY
EMERGENCY MANAGEMENT

GROUP

hbemergency.govt.nz

Date: 30 September 2025 Version: 2.1 Approved By:
Emergency Readiness and Business Continuity Advisor

RĀRANGI TAKE

Contents

Kupu arataki

INTRODUCTION	1
What to do during and after an emergency	4
What hazards do we have?	6
Hazard profiles & maps	9
Strengths & vulnerabilities	12
Community resources & capability	13
Potential impacts & responses	14
Resilience tools	15
In an emergency you will need	17
Appendices & resources	18

KUPU ARATAKI

INTRODUCTION

The purpose of this Community Resilience Plan is to help our community to ensure measures are in place to help us look after each other before, during, and after an emergency.

This writing and information within this plan comes from our community.



Description of our community

Puketapu South is a rural locality situated approximately 20 minutes northwest of Hastings in the Hawke's Bay region of NZ. The area is made up of pastoral farms, lifestyle blocks, orchards, and cropping land, with a strong cultural presence centred around Moteo Marae.

The terrain is gently undulating, with fertile soils supporting horticulture and agriculture. The river provides a natural boundary and contributes to the ecological character of the area.

The community is anchored by both the Moteo and Timi Kara Marae, which serve as a cultural and spiritual hub for hapū including Ngāti Hinepare, Ngāti Maahu, and Ngai Tāwhao of Ngāti Kahungunu. The marae hosts events, wānanga, and gatherings that reinforce the area's identity and heritage.

He waka eke noa
We are all working together

This community includes the following areas:

- South of the Puketapu Bridge, bordered by:
 - Tūtaekurī River to the north,
 - Pukehamoamoā / Moteo Valley to the west,
 - The outskirts of Taradale and Waiohiki Marae to the east,
 - SH50 to the south.

Plan Principles:

This plan is based on the following key principles:

- Life safety is paramount, and all actions should aim to achieve this outcome.
- The community is prepared to:
 - Self-evacuate as early as possible, or
 - Be self-sufficient for at least 14 days.
- Community support will be coordinated through two Community Emergency Hubs, at **The Red Shed Community Emergency Resources Container & Moteo Marae** (in collaboration with the Timi Kara Marae).

Philosophy:

“Me mahi tahi tātou, mō te oranga o te katoa”

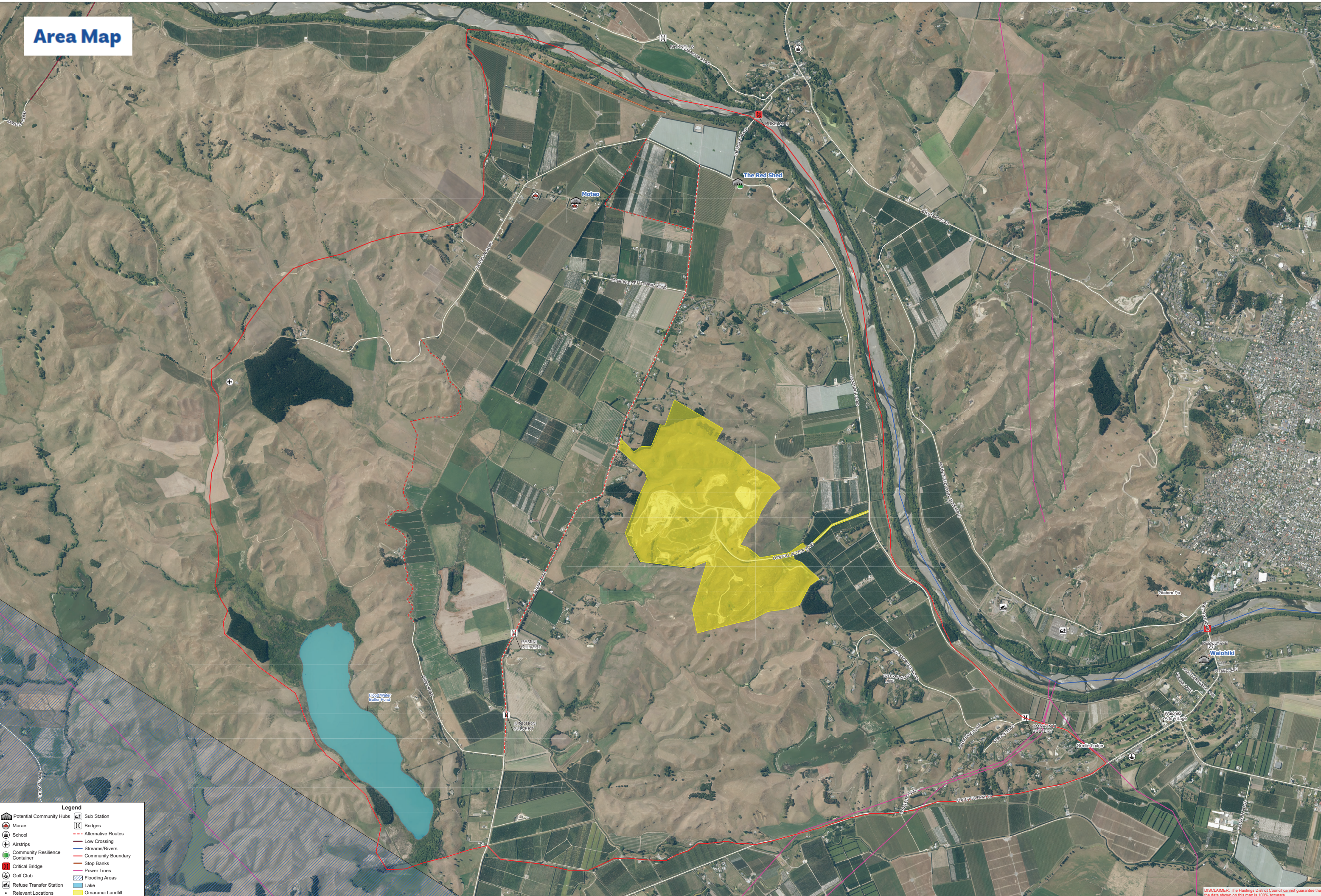
“We work together for the well-being of everyone”

“Waiho i te toipoto, kua i te toiroa”

“Let us keep close together, not wide apart”.

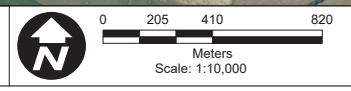
He waka eke noa
We are all working together

Area Map



Legend

Overview of Puketapu South Area (Moteo, Timi Kara & The Red Shed)



DISCLAIMER: The Hastings District Council cannot guarantee that the data shown on this map is 100% accurate.

I TE WĀ O TE OHOTATA

WHAT TO DO DURING AND AFTER AN EMERGENCY



STEP 1

Try to stay calm, check yourself and others in your household for injuries, for minor injuries provide first aid, then assess your home for damage.

Is everything ok?

NO



STEP 2

If you or anyone in your household have significant injuries call **111 immediately**.
If your home is not safe, **evacuate immediately and call 111**.

YES



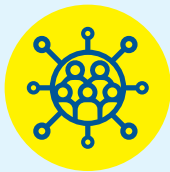
STEP 3

Check on your immediate neighbours. Assess your surroundings for damage, check on your street & neighbourhood.

If safe to proceed go to STEP 4



A place for your community to gather and help each other out during an emergency.



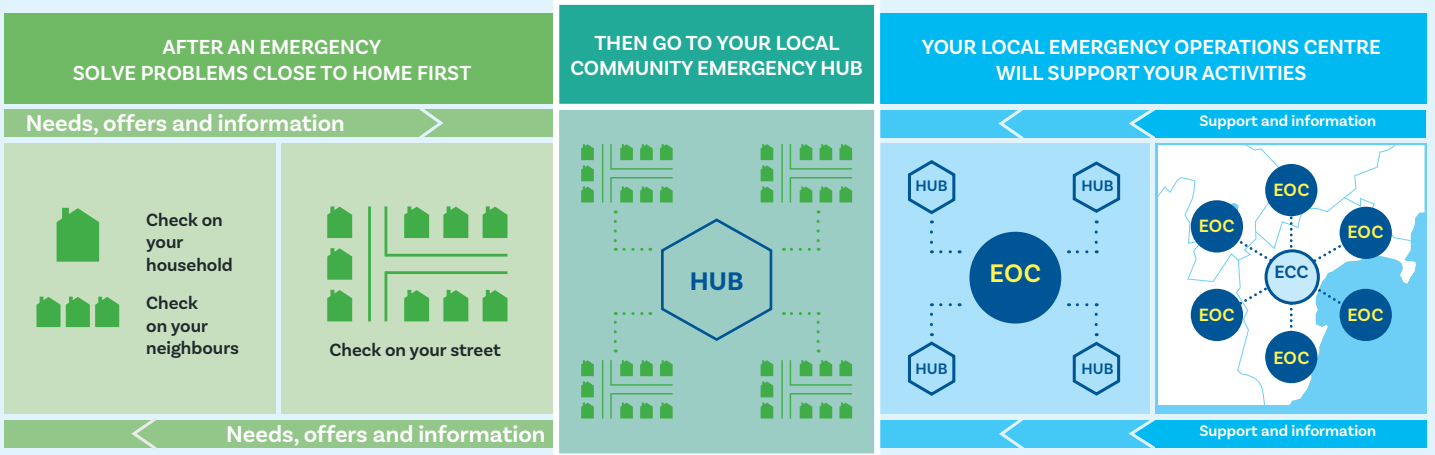
STEP 4

Go to your local Community Emergency Hub.

The Hub is a designated place where your community can gather, connect with one another, and solve problems using the skills and resources which already exist among your community.

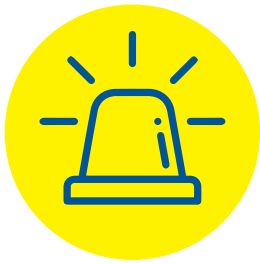
Community Emergency Hubs are a place for people to work together to solve problems locally while still coordinating with councils about big problems.

See page 3 for a map of your local Hub locations.






During an emergency, councils will stand up an Emergency Operations Centre (EOC) to respond. The EOC will give support and information back into the community, and give information to the regional Emergency Coordination Centre (ECC).





WHAT HAZARDS DO WE HAVE?





Below is a list of the Hazards that could cause an emergency in our community. More information on these hazards, and what you can do before, during and after an emergency, can be found on the HB Emergency Website (www.hbemergency.govt.nz).

These Hazards, perceived likelihood and impact, warning type, and immediate actions were decided with the community.

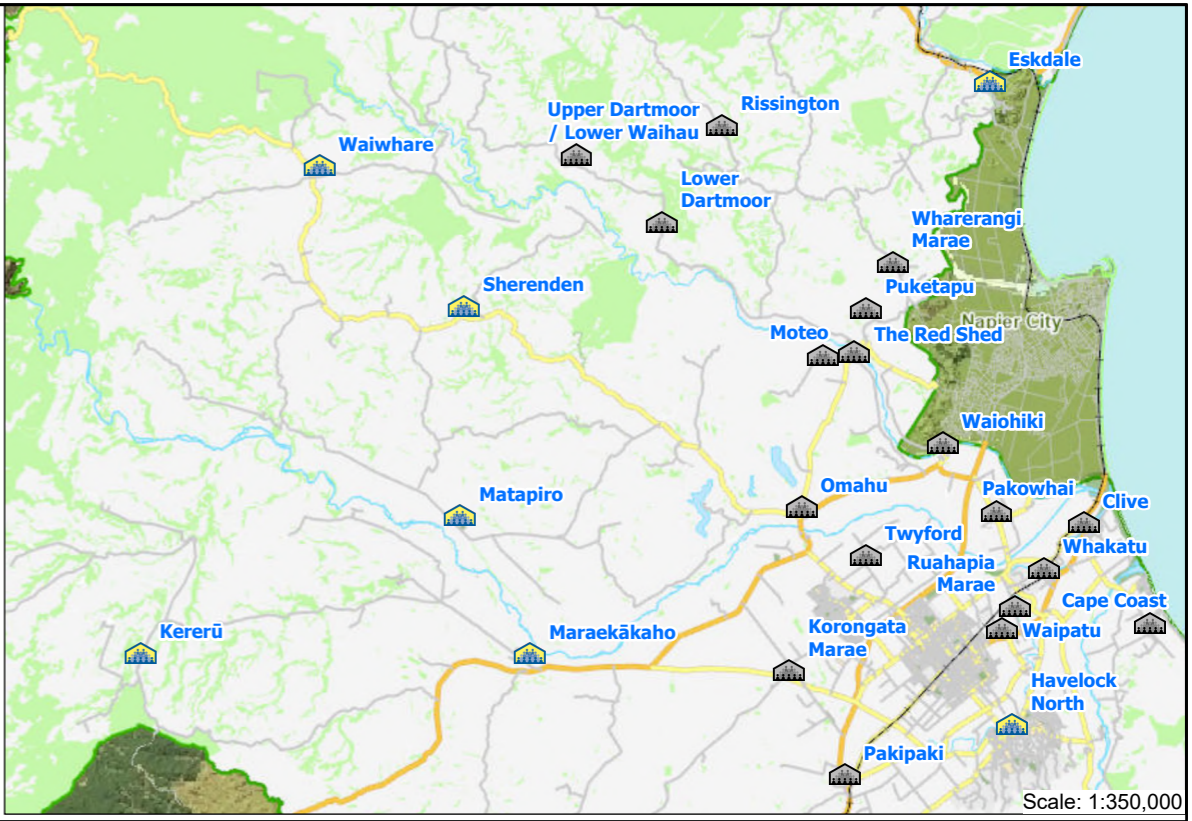
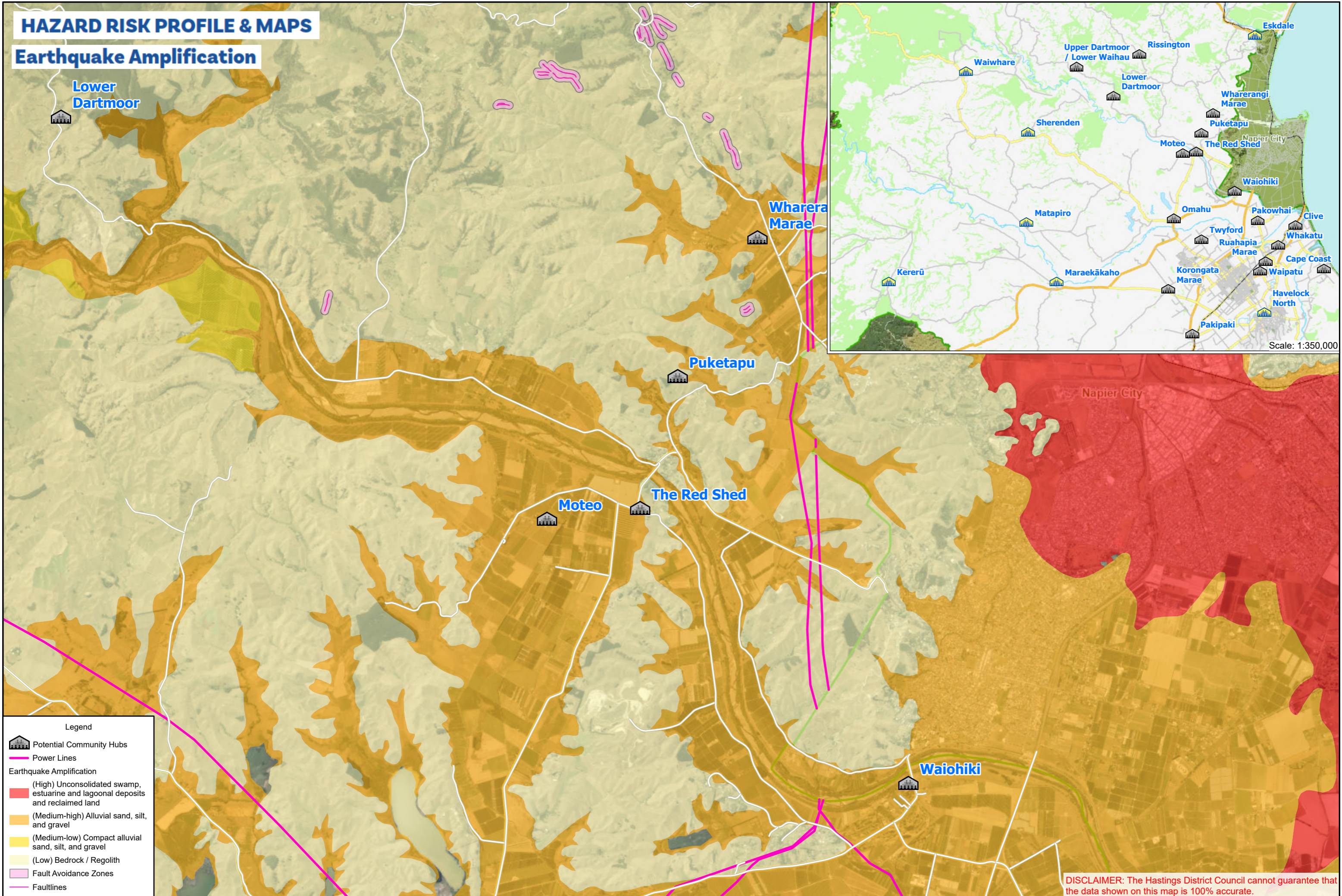
HAZARD (perceived likelihood & impact)	WARNING & ACTIONS	IMPACTS
 <p>1. Storm, Flood, and Severe Weather</p>	<p>Warning - MetService warning. Information disseminated by Hawke's Bay Emergency Management Office (HB EMO) and council.</p> <p>Actions:</p> <ul style="list-style-type: none"> • Self-evacuate to high ground if you see floodwater rising. Do not wait for an official warning. • Preferably stay with friends or family out of the hazardous area. 	<ul style="list-style-type: none"> • Flooding and landslides. • Damage from high wind. • Loss of electricity. • Evacuation of flood zones. • Isolated communities.
 <p>2. Critical Infrastructure Failure (roads, bridges & power)</p>	<p>Warning - Unplanned loss of service. HB EMO, HDC, HBRC, NZTA and Unison websites, and social media.</p> <p>Actions:</p> <ul style="list-style-type: none"> • Shelter in place. • Check on neighbours and friends in the area. 	<ul style="list-style-type: none"> • Restrictions to the areas people can access. • May cause distress or health issues for people
 <p>3. Earthquake</p>	<p>Warning - Earthquakes are rapid onset events and occur without warning.</p> <p>Actions:</p> <ul style="list-style-type: none"> • Drop, Cover, Hold, including during following aftershocks. 	<ul style="list-style-type: none"> • Damage to buildings, roads and bridges. • Loss of water, electricity, and communication. • Isolation and cut off communities.

HAZARD <small>(perceived likelihood & impact)</small>	WARNING & ACTIONS	IMPACTS
 <p>4. Grass Fire</p>	<p>Warning - Natural (Smoke). FENZ warning.</p> <p>Actions:</p> <ul style="list-style-type: none"> • Evacuate to an unaffected area. • Preferably stay with friends or family out of the hazardous area. 	<ul style="list-style-type: none"> • Damage to buildings. • Restrictions to the areas people can access. • Impact on infrastructure, services, and commercial actions.
 <p>5. Landslide</p>	<p>Warning - Landslides can happen without warning but may be triggered by other hazards.</p> <p>Actions:</p> <ul style="list-style-type: none"> • Evacuate to an unaffected area. • Preferably stay with friends or family out of the hazardous area. 	<ul style="list-style-type: none"> • Blocked access to roads and properties. • Damaged critical infrastructure. • Further landslides may occur.
 <p>6. Volcanic Ashfall</p>	<p>Warning - Warning through GeoNet, HB EMO, and council.</p> <p>Actions:</p> <ul style="list-style-type: none"> • Shelter in place. • Disconnect downpipes to tank water. • Seal windows and doors. • DO NOT use vehicles or machinery until ashfall stops. 	<ul style="list-style-type: none"> • Damage to crops. • Health impacts and difficulty breathing if ash is inhaled. • Disruption to electricity, communications, and services. • Damage to vehicles, routes, and houses.
 <p>7. Human Pandemic</p>	<p>Warning - Te Whatu Ora / Health NZ warning. Information shared by HB EMO and council.</p> <p>Actions:</p> <ul style="list-style-type: none"> • Stay home if you are unwell. • Use hygiene measures including washing hands and using masks. 	<ul style="list-style-type: none"> • Widespread illness. • Schools, businesses, and community spaces shut and/or face disruption of services.

HAZARD (perceived likelihood & impact)	WARNING & ACTIONS	IMPACTS
 <p>8. Hazardous Substances</p>	<p>Warning - FENZ warning.</p> <p>Actions:</p> <ul style="list-style-type: none"> • Evacuate the immediate area. • Call 111 for assistance. • Identify the substance if safe to do so. 	<ul style="list-style-type: none"> • Contamination of land. • Poisoning of people and animals. • Damage to crops. • Evacuation of affected areas.
 <p>9. Tsunami</p>	<p>Local source tsunami warnings are primarily natural:</p> <ul style="list-style-type: none"> • Long or strong earthquake • Rapid retreat of the ocean • Unusual currents, noises and fizzing of the ocean <p>Actions:</p> <ul style="list-style-type: none"> • Residents and visitors from within the tsunami evacuation zone will evacuate to higher ground without delay if preceded by a long, strong earthquake. <p>Distant source tsunami warnings will primarily be:</p> <ul style="list-style-type: none"> • Evacuations by emergency services e.g. door knocking • Road closures to prevent access to areas under threat • Media, including social media, radio, TV, internet etc <p>Actions:</p> <ul style="list-style-type: none"> • Distant source tsunami evacuations will be led by emergency services, evacuate promptly and do not return until the all clear is given by emergency management officials. 	<ul style="list-style-type: none"> • Inundation of coastal and riverine areas - may cause strong and unusual currents within the river channel. • Strain on inland community resources. • Large scale displacement. • Loss of water, electricity and communications. • Liquefaction (from a near-source earthquake). • Economic impacts.

HAZARD RISK PROFILE & MAPS

Earthquake Amplification

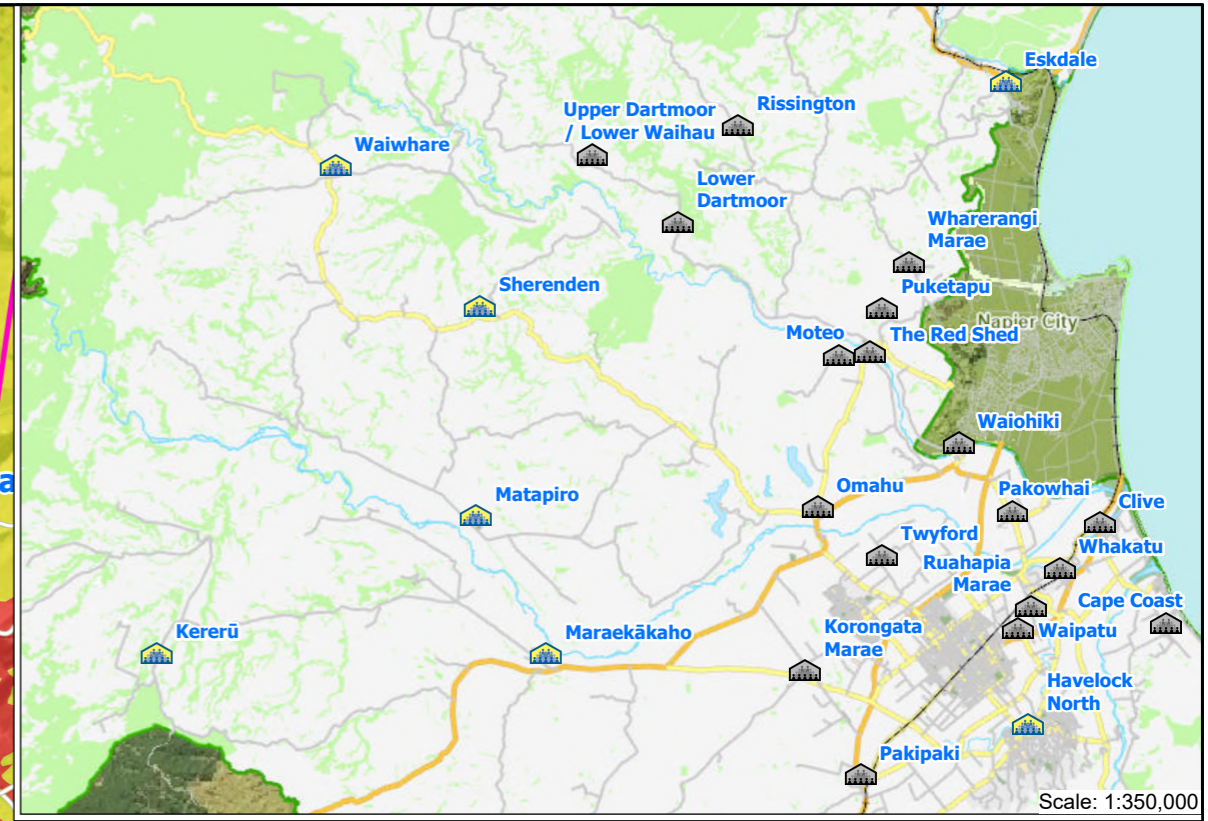
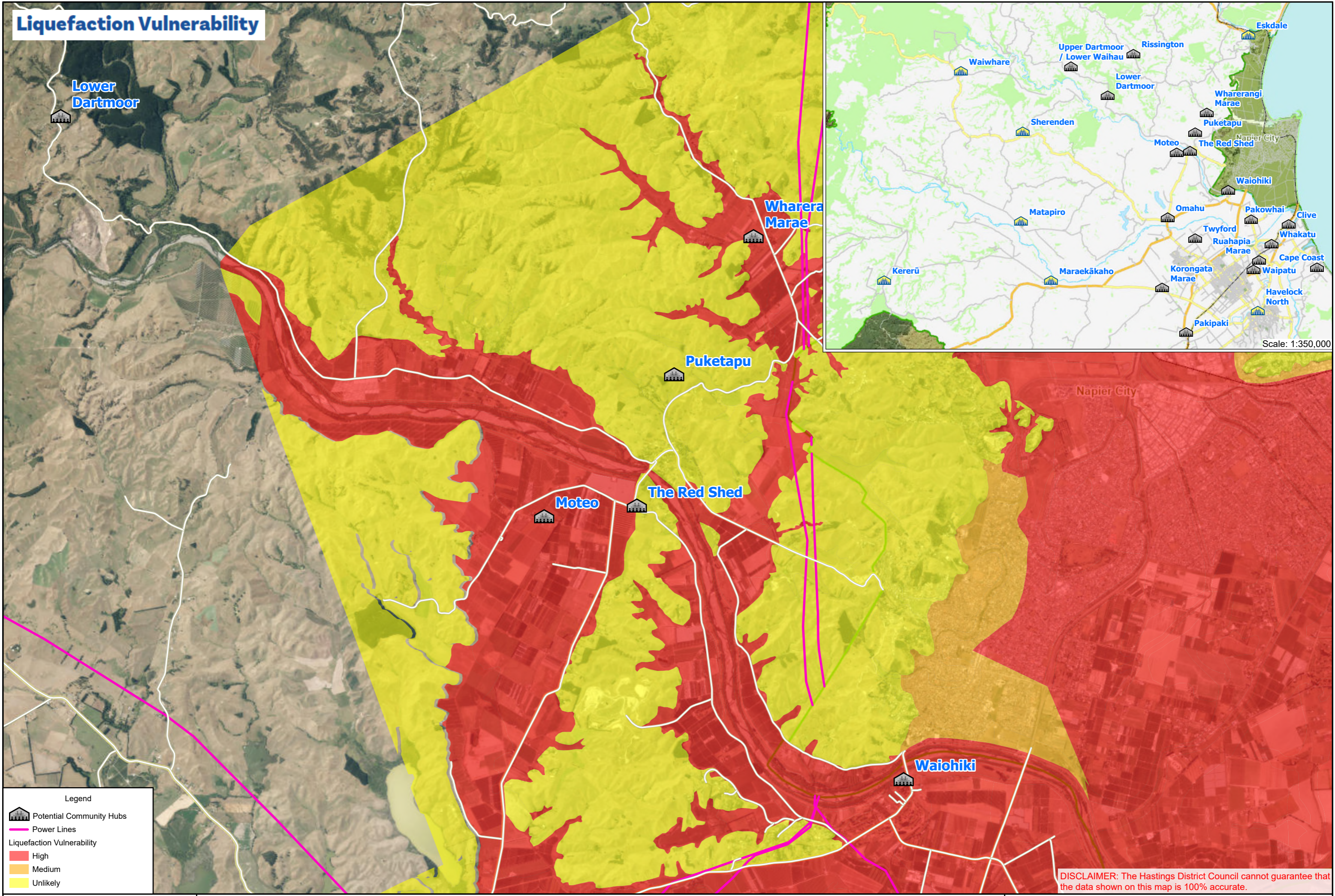


Legend

- Potential Community Hubs
- Power Lines
- Earthquake Amplification**
- (High) Unconsolidated swamp, estuarine and lagoonal deposits and reclaimed land
- (Medium-high) Alluvial sand, silt, and gravel
- (Medium-low) Compact alluvial sand, silt, and gravel
- (Low) Bedrock / Regolith
- Fault Avoidance Zones
- Faultlines

DISCLAIMER: The Hastings District Council cannot guarantee that the data shown on this map is 100% accurate.

Liquefaction Vulnerability



Legend

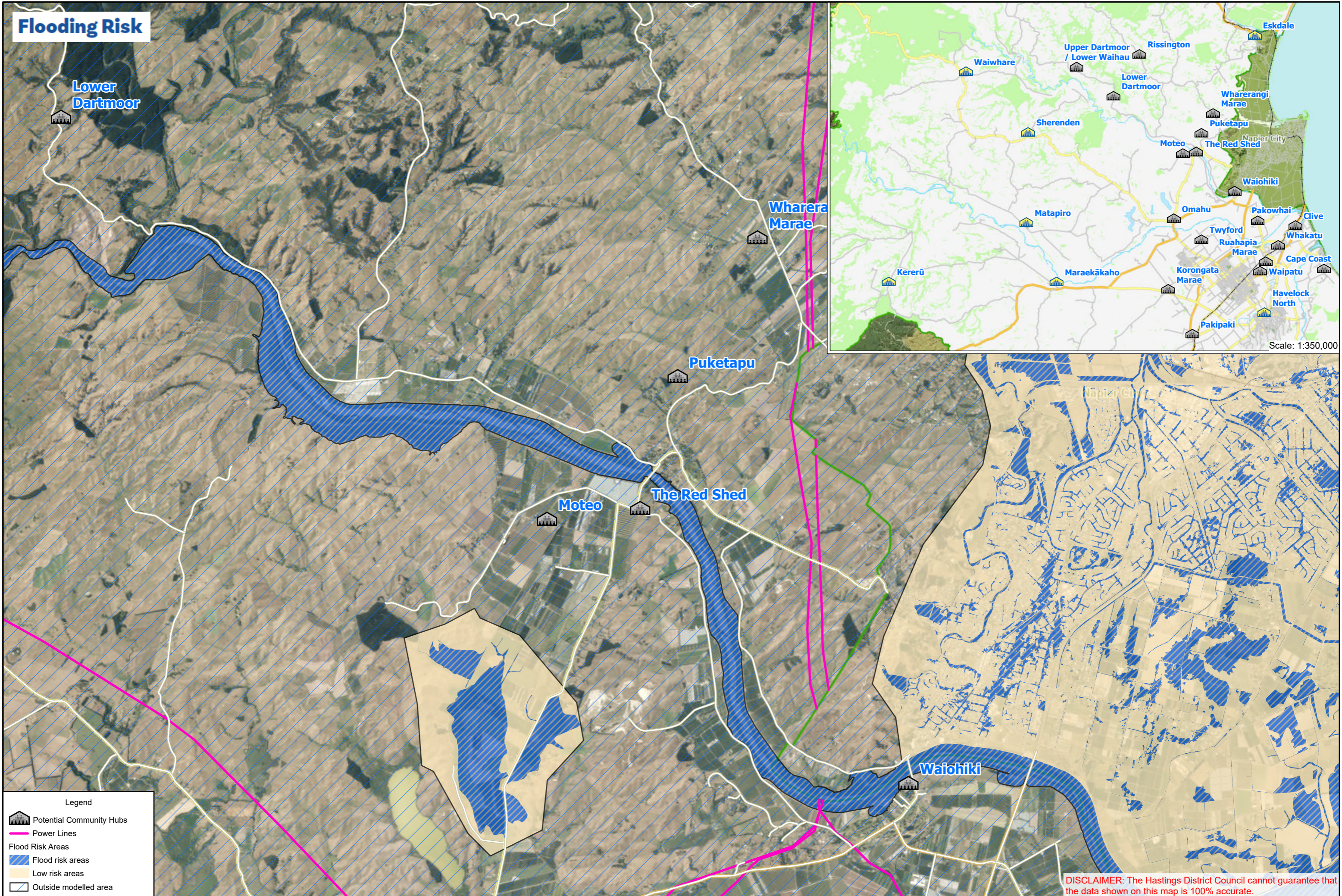
- Potential Community Hubs
- Power Lines

Liquefaction Vulnerability






- High
- Medium
- Unlikely

DISCLAIMER: The Hastings District Council cannot guarantee that the data shown on this map is 100% accurate.

Flooding Risk



Legend

-  Potential Community Hubs
-  Power Lines
- Flood Risk Areas**
-  Flood risk areas
-  Low risk areas
-  Outside modelled area

DISCLAIMER: The Hastings District Council cannot guarantee that the data shown on this map is 100% accurate.

VULNERABILITIES & VALUED STRENGTHS

	VULNERABILITIES	STRENGTHS
Social / Cultural	<p>All Areas</p> <ul style="list-style-type: none"> Local Kaumatua attached to the land not wanting to leave. People with medical needs. Access to medication (prescriptions). Disabled, elderly, infant community members. <i>Seasonal workers may be present in large numbers and have unique needs.</i> 	<p>All Areas</p> <ul style="list-style-type: none"> Skills in the community (Refer to Skills List), including: <ul style="list-style-type: none"> Trades (Builders, Electricians, Plumbers) Farmers. Teachers. Contractors. Medical Professionals (Nurses in the area). Engineers. Fencers. Stock helpers. Local Iwi. The Fire & Emergency NZ (FENZ) station in Taradale covers all three communities. Residents will have a minimum of a week's food supply. Access to machinery, chainsaws, fuel supplies, and water tanks via farmers & contractors.
Built	<p>All Areas</p> <ul style="list-style-type: none"> Stop banks failed and Puketapu bridges destroyed during Cyclone Gabrielle. Puketapu bridge vital connection to Puketapu North. Powerlines vulnerable during flooding. Omahu Road and Swap Road vulnerable to flooding. 	<p>All Areas</p> <ul style="list-style-type: none"> Papakāinga housing close to Timi Kara Marae. Shamrock Park has supply of gas bottles, kitchen facilities, accommodation and 40,000l of water. Farm accommodation at the Ebbetts. Marae to serve as Community Emergency Hub (CEH). Households with water tanks & various private generators.
Economic	<p>All Areas</p> <ul style="list-style-type: none"> Main productive activity: Farming generally, viticulture & orcharding. Vulnerable to flooding and drought. 	<p>All Areas</p> <ul style="list-style-type: none"> Farming equipment, including diggers, trucks, utes and tractors. Animal stock, with accompanying supplies of food.
Natural	<p>All Areas</p> <ul style="list-style-type: none"> Main natural risk: Flooding. Area in high Earthquake amplification zone. Area will experience high levels of liquefaction during earthquake. 	<p>All Areas</p> <ul style="list-style-type: none"> High ground available to evacuate to.

COMMUNITY RESOURCES



Our community is the best source of resources to help each other.

What are the items, skills, people, and places we can identify within our community to use?

RESOURCES & CAPABILITY			
Places & Spaces	<p>All Areas</p> <ul style="list-style-type: none"> • Moteo Marae, 48 Moteo Marae Road, RD3, Napier, 4183 (CEH). [GPS coordinates: 39°31'10.2"S 176°46'13.3"E]. • Timi Kara Marae, 10 Moteo Marae Road, Taradale, Puketapu, 4183 • The Red Shed, 681 Omarunui Road (CEH). [GPS coordinates: 39°31'03.0"S 176°47'10.0"E]. • Shamrock Park, 89 Omarunui Settlement Road. • Papakainga. • Timi Kara Marae has an RT for event management. • There are airstrips on farms across the area for small planes to land and to drop-off supplies. 		
Infrastructure	<p>All Areas</p> <ul style="list-style-type: none"> • Airstrip at end of Moteo Pa Road. • Puketapu Bridge, with enhanced resilience. • AED Defibrillators: The Red Shed, 681 Omarunui Road. • Power Lines throughout area. • Alternative access through 'the Alley Way' to Moteo Marae. • Nearest supermarket locations: Taradale, Bayview & Napier]. 		
Networks & Groups of People	<p>All Areas</p> <ul style="list-style-type: none"> • Neighbourhood Support Network group • Marae Trust Committees • A lot of tradespeople are living in the area (electricians, plumbers, etc.). • Community Facebook page: Messaging is going to everyone in the community. • School Board. • Iwi. • Farmers. 		
Services in our Community	<p>All Areas</p> <ul style="list-style-type: none"> • Residents with trades skills. • Farmers & contractors with diggers, tractors, bulldozers, bulk fuel supply and water tanks. • First Aid kits locations: Container at The Red Shed and at Marae. • Residents with generators & Starlinks. • Off the grid properties. <table style="width: 100%; border: none;"> <tr> <td style="width: 50%; vertical-align: top;"> <p>Moteo & Timi Kara Marae On-site facilities: Kitchen, ablutions. Helicopter landing site.</p> </td> <td style="width: 50%; vertical-align: top;"> <p>The Red Shed On-site facilities: Kitchen & re-supply site. Helicopter landing site.</p> </td> </tr> </table>	<p>Moteo & Timi Kara Marae On-site facilities: Kitchen, ablutions. Helicopter landing site.</p>	<p>The Red Shed On-site facilities: Kitchen & re-supply site. Helicopter landing site.</p>
<p>Moteo & Timi Kara Marae On-site facilities: Kitchen, ablutions. Helicopter landing site.</p>	<p>The Red Shed On-site facilities: Kitchen & re-supply site. Helicopter landing site.</p>		

POTENTIAL IMPACTS & RESPONSES

IMPACT	HAZARD	RESPONSES
Need to evacuate	Tsunami, Storm/Flood, Fire, Volcanic Ash, Landslide	<ul style="list-style-type: none"> • Grab bags prepared. • House/building security. • Emergency container locations with basic supplies. • CEH locations with communications.
Stuck at home	Earthquake, Storm/Flood, Volcanic Ash, Pandemic, Landslide	<ul style="list-style-type: none"> • Households have additional food, water & medication supplies. • Connect through Neighbourhood Support network. • CEH locations with communications.
Can't get home	Earthquake, Tsunami, Storm/Flood, Fire, Volcanic Ash, Landslide	<ul style="list-style-type: none"> • Pre-arranged plans including meeting points. • Communication through Community Emergency Hub network.
Injuries/ medical needs	All	<ul style="list-style-type: none"> • Households with trained first aiders and first aid supplies. • CEH first aid kit. • List of medical professionals.
No water	Earthquake, Tsunami, Storm/Flood, Fire, Volcanic Ash.	<ul style="list-style-type: none"> • Household water tanks. • Household stores of bottled water. • River water (requires boiling).
No electricity	Earthquake, Tsunami, Storm/Flood, Fire, Landslide	<ul style="list-style-type: none"> • Household generators - held by many.
No communications (phone or internet)	Earthquake, Tsunami, Storm/Flood, Fire, Volcanic Ash	<ul style="list-style-type: none"> • Private Starlinks - residents may be prepared to share access with other locals. • Community Emergency Hub VHF radio.
Loss of road access	Earthquake, Tsunami, Storm/Flood, Fire, Volcanic Ash, Landslide	<ul style="list-style-type: none"> • Farm machinery available to restore road access.

RESILIENCE TOOLS

TOOLS		STATUS
1.	Personal preparedness enablers: Household Plan & Grab & Go Bag.	In Progress
2.	Community resilience & hub training, including lanyards roles.	On Going
3.	Community events - Street events, Hall drop-in days, Container open days	In Progress
4.	Social media: Puketapu South Community Facebook Group: www.facebook.com/groups/239008775120722/	On Going
5.	Regular hub co-ordinator get-togethers.	On Going

STAY?

ME NOHO?

SHELTER IN PLACE

Me Noho Ki Taua Wāhi



Our hazard decision path



Earthquake • He Rū

Our FIRST response:



Our SECOND response:

Was that long? (more than a minute)
Was that strong? (hard to stand up)

NO

YES



Tsunami • He Ngaru Taitoko

Are we in a tsunami zone?

NO

YES



Flood • He Waipuke

Are we in a flood zone?

Are we in danger from rising water?

NO

YES



Fire • He Kāpura

Go to agreed assembly area



Volcanic ash He Pungarehu Puia



Hazardous substance Ngā Matū Pūmate

OR GO?

ME HAERE RĀNEI?



Take the designated route to our safe location.

EVACUATE

Me Haere



IN AN EMERGENCY YOU WILL NEED:



AN EMERGENCY PLAN

Make a plan for your household, whānau and pets to get through an emergency, consider;

- Where will you meet or evacuate to?
 - How will you look after each other?
 - Who might need our help?
 - Who will we need to contact?
 - What will we do if we are stuck at home?
 - What will we do if we have no power, no water, no way to get information?
-



EMERGENCY SUPPLIES

You don't have to have them all in one place, but you might have to find them in a hurry and/or in the dark, store:

- Three litres of water per person per day.
 - First aid kit.
 - Long-lasting food that doesn't need cooking, or a way to safely cook or heat food without electricity, and extra fuel.
 - Consider also specific food needs of babies, children and pets.
 - Torch.
 - Emergency cash.
 - Half a tank of fuel in your vehicle.
 - Toilet paper and large plastic buckets for an emergency toilet.
 - Work gloves and a properly fitted mask.
-



EMERGENCY GRAB BAG

Pack your emergency grab bag with basic supplies including:

- Walking shoes, warm clothes, raincoat, and hat.
 - Water and snack food (remember babies and pets too).
 - Hand sanitizer & face mask.
 - Portable phone charger.
 - Cash.
 - Copies of important documents and Photo ID.
 - Medication.
 - Small first aid kit.
-

Remember your grab bag should be light enough that you can still carry it.

APPENDIX A: INTERNAL & EXTERNAL COMMUNICATION

Communication: Internal

The following table lists the different methods the community can use to communicate with each other:

	AREA/GROUP	NEED/ISSUE	APPROACH
1.	Puketapu South VHF radio at Moteo Marae	Communicate needs directly to Hastings District Council.	Radio to be utilised in the Community Hub to relay requests and information.
2.	Neighbourhood Support Network	Welfare checks on people in the community.	Phone call tree run by Neighbourhood Support Network contacts.

APPENDIX A: INTERNAL & EXTERNAL COMMUNICATION

Communication: Emergency Agencies

The following table lists the contact details for Emergency Agencies:

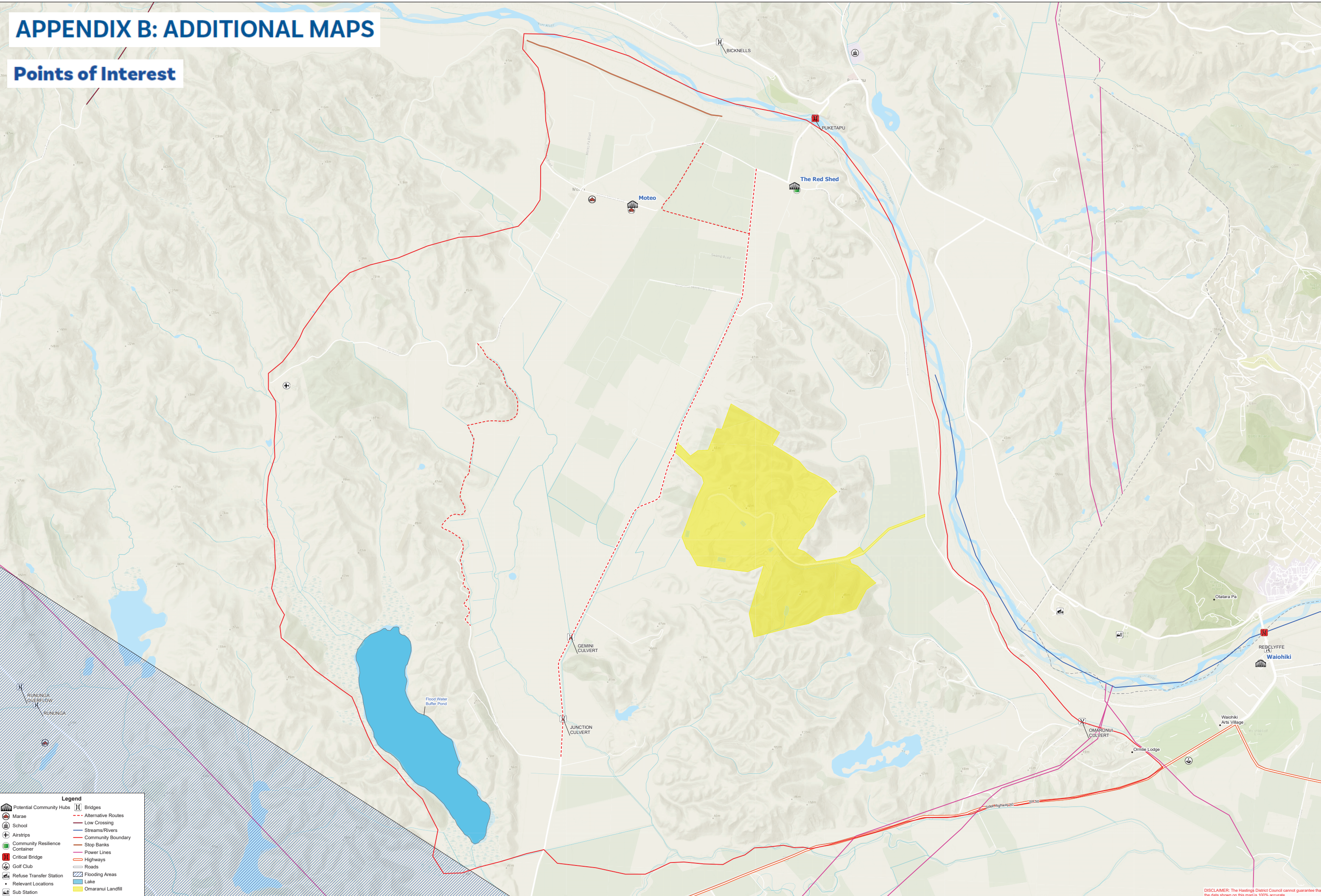
Monitor the following sources of information to stay informed: **Television | Radio**
 [Frequencies: 90.3FM, 89.5FM, 97.5FM, 94.5FM] **Online Websites & Social Media**
 (Official & Community Pages)

IMPORTANT: Call **111** for all urgent or emergency situations.

AGENCY	NEED/ISSUE	CONTACT/SOURCES OF INFORMATION
Police	Risk to people or property	Urgent: Call 111 OR Non-urgent: Call 105 or online
Fire & Emergency New Zealand (FENZ)	Risk to people or property	Call 111
Ambulance (St John)	Risk to people	Call 111
Hawke's Bay Emergency Management Office	Warnings, alerts, advice and key information before, during and after an emergency.	Online: https://www.hbemergency.govt.nz/ OR Facebook – HB Civil Defence Emergency Management Group.
MetService	Severe weather warnings, alerts.	Online https://www.metservice.com/warnings/home
Hastings District Council	Status of: <ul style="list-style-type: none"> • local roads (i.e. not state highways) • Urban water supply • Urban wastewater (sewerage). • Solid waste/rubbish collection and disposal. 	Call (06) 871 5000 (24/7) OR Email: customerservice@hdc.govt.nz (Monday to Friday 9am – 5pm) Facebook - Hastings District Council - Te Kaunihera ā-Rohe o Heretaunga Road status: https://www.hastingsdc.govt.nz/services/roads-and-streets/road-works
New Zealand Transport Agency (NZTA) / Waka Kotahi	Status of State Highways	Call: 0800 4 HIGHWAYS or (0800 44 44 49) Online: https://www.journeys.nzta.govt.nz/highway-conditions/ OR Facebook – NZ Transport Agency Waka Kotahi – Hawke's Bay & Gisborne
Unison Networks	Status of power supply	Call 0800 2 UNISON or 0800 2 86476 OR Online https://www.unison.co.nz/outages/
Hawke's Bay Regional Council (HBRC)	Status of: <ul style="list-style-type: none"> • Rainfall. • River levels and flows. • Flood control and drainage. • Air quality. 	Call (06) 835 9200 (24/7) OR 0800 108 838 OR Email: info@hbrc.govt.nz (Monday to Friday 8am – 5pm) OR Facebook – Hawke's Bay Regional Council

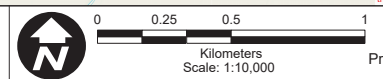
APPENDIX B: ADDITIONAL MAPS

Points of Interest



Legend	
	Potential Community Hubs
	School
	Airstrips
	Community Resilience Container
	Critical Bridge
	Golf Club
	Refuse Transfer Station
	Relevant Locations
	Sub Station
	Bridges
	Alternative Routes
	Low Crossing
	Streams/Rivers
	Community Boundary
	Stop Banks
	Power Lines
	Highways
	Roads
	Flooding Areas
	Lake
	Omaranui Landfill

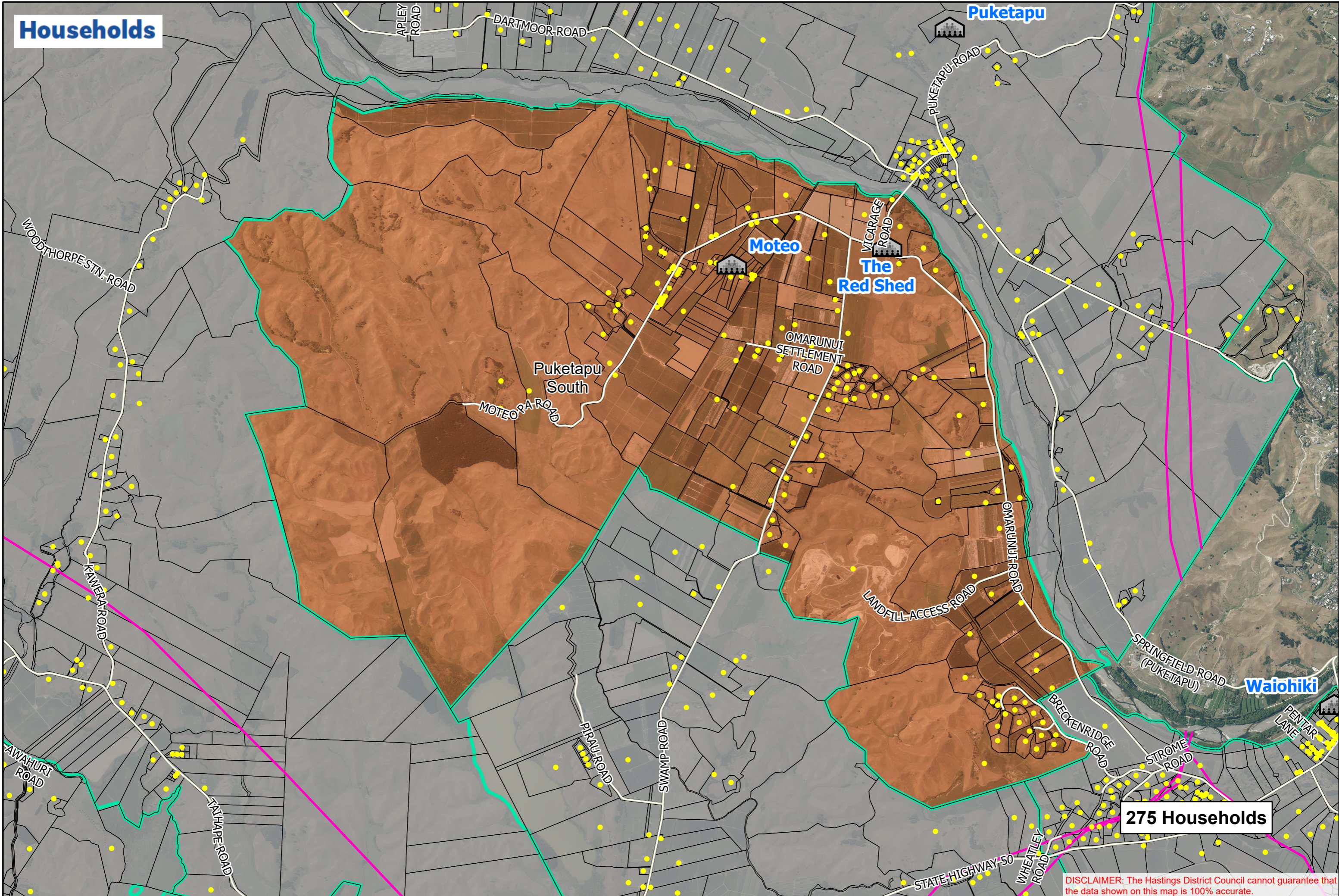
Overview of Puketapu South (Moteo, Timi Kara & The Red Shed) Points of Interest



Original Size: A0
 Date: Friday, 25 July 2025
 Projection: NZTM / Datum: D_NZGD_2000
 Map Produced using ArcGIS Pro
 Produced by: andrec

DISCLAIMER: The Hastings District Council cannot guarantee that the data shown on this map is 100% accurate.

Households



275 Households

DISCLAIMER: The Hastings District Council cannot guarantee that the data shown on this map is 100% accurate.

