



HE MAHERE OHOTATA MŌ
TE HAPORI

RD9 Area

(Waiwhare - Sherenden - Matapiro)

Community Resilience Plan

**HERETAUNGA
HASTINGS** DISTRICT COUNCIL

hbemergency.govt.nz



HAWKE'S BAY
EMERGENCY MANAGEMENT

GROUP

Date: 8 December 2025 Version: V2.1 Approved By:
Emergency Readiness & Business Continuity Advisor

RĀRANGI TAKE

Contents

Kupu arataki

INTRODUCTION	1
What to do during and after an emergency	4
What hazards do we have?	6
Hazard profiles & maps	9
Strengths & vulnerabilities	12
Community resources & capability	14
Potential impacts & responses	15
Resilience tools	16
In an emergency you will need	18
Appendices & resources	19

KUPU ARATAKI

INTRODUCTION

The purpose of this Community Resilience Plan is to help our community to ensure measures are in place to help us look after each other before, during, and after an emergency.

This writing and information within this plan comes from our community.



Description of our community

RD9 is a large geographic area and includes Pukehāmoama, Sherenden, Crownthorpe, Ōtamauri, Whanawhana, Waiwhare, Kurīpāpongo, Matapiro and Kaweka Forest Park. There are a broad range of land uses including lifestyle living in the areas which are handy to both Napier and Hastings, an established farming community with a combination of large and small holdings, as well as large areas of viticulture and horticulture.

The RD9 community sits between two rivers, the Ngaruroro and the Tūtaekurī and stretches from Omahu on the outskirts of Hastings to the boundary with Rangitikei District Council at Kuripapango.

This community includes the following areas:

- Bounded to the South by the Ngaruroro River
- Bounded to the West by the Kaweka Range
- Bounded to the East by the end of the Napier Taihape Road where it enters the Heretaunga Plains, and running adjacent to the western side of Kawera Road, the the Tutaekuri River
- Bounded to the North by the Tutaekuri River.

He waka eke noa
We are all working together

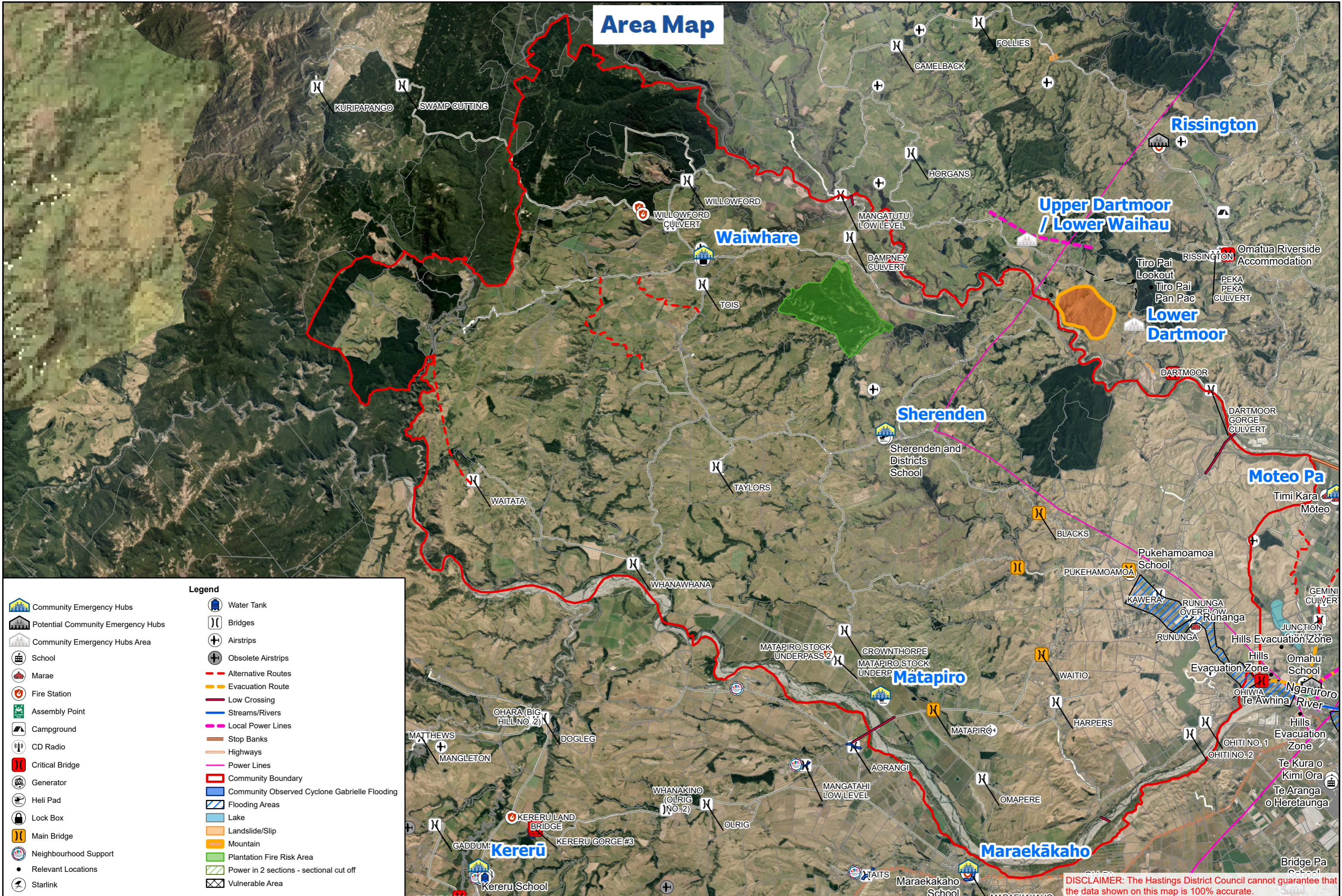
Plan Principles

This plan is based on the following key principles:

- Life safety is paramount, and all actions should aim to achieve this outcome.
- Community is prepared to be self-sufficient for a period of 14 days if isolated.
- Community support may be coordinated through Community Emergency Hubs at the Waiwhare Community Centre, Sherenden Community Hall, and/or the Matapiro & Districts Recreation Hall.

He waka eke noa
We are all working together

Area Map



- Legend**
- Community Emergency Hubs
 - Potential Community Emergency Hubs
 - Community Emergency Hubs Area
 - School
 - Marae
 - Fire Station
 - Assembly Point
 - Campground
 - CD Radio
 - Critical Bridge
 - Generator
 - Heli Pad
 - Lock Box
 - Main Bridge
 - Neighbourhood Support
 - Relevant Locations
 - Starlink
 - Water Tank
 - Bridges
 - Airstrips
 - Obsolete Airstrips
 - Alternative Routes
 - Evacuation Route
 - Low Crossing
 - Streams/Rivers
 - Local Power Lines
 - Stop Banks
 - Highways
 - Power Lines
 - Community Boundary
 - Community Observed Cyclone Gabrielle Flooding
 - Flooding Areas
 - Lake
 - Landslide/Slip
 - Mountain
 - Plantation Fire Risk Area
 - Power in 2 sections - sectional cut off
 - Vulnerable Area

DISCLAIMER: The Hastings District Council cannot guarantee that the data shown on this map is 100% accurate.

I TE WĀ O TE OHOTATA

WHAT TO DO DURING AND AFTER AN EMERGENCY



STEP 1

Try to stay calm, check yourself and others in your household for injuries, for minor injuries provide first aid, then assess your home for damage.

Is everything ok?

NO



STEP 2

If you or anyone in your household have significant injuries call **111 immediately**.
If your home is not safe, **evacuate immediately and call 111**.

YES



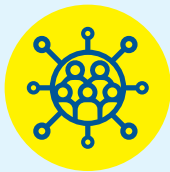
STEP 3

Check on your immediate neighbours. Assess your surroundings for damage, check on your street & neighbourhood.

If safe to proceed go to STEP 4



A place for your community to gather and help each other out during an emergency.



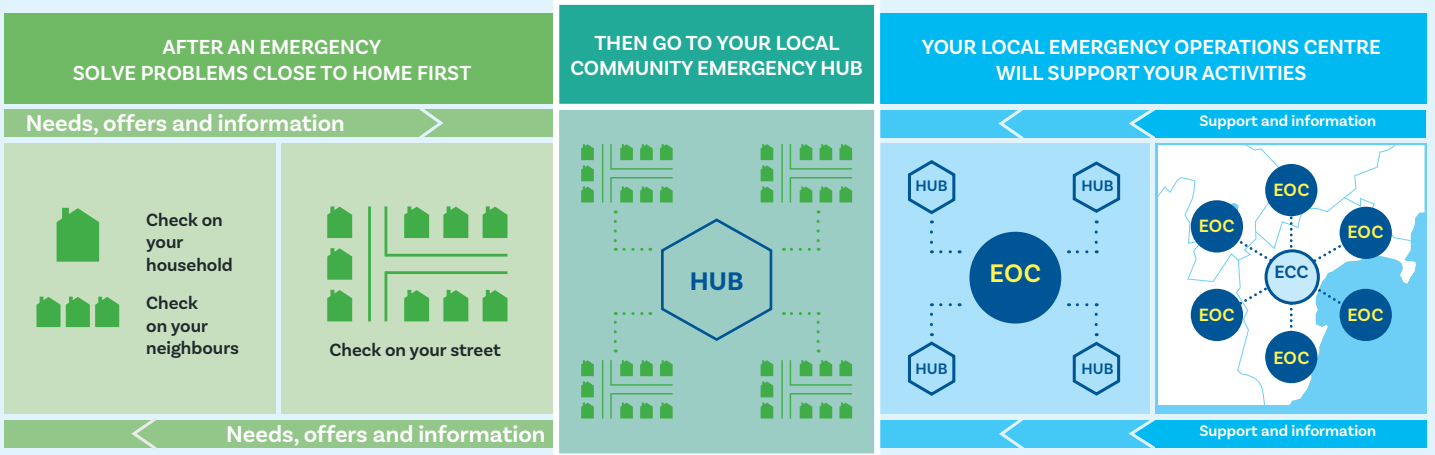
STEP 4

Go to your local Community Emergency Hub.

The Hub is a designated place where your community can gather, connect with one another, and solve problems using the skills and resources which already exist among your community.

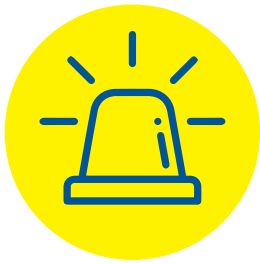
Community Emergency Hubs are a place for people to work together to solve problems locally while still coordinating with councils about big problems.

See pages 23 - 25 for maps of your local Hub locations.



During an emergency, councils will stand up an Emergency Operations Centre (EOC) to respond. The EOC will give support and information back into the community, and give information to the regional Emergency Coordination Centre (ECC).





WHAT HAZARDS DO WE HAVE?





Below is a list of the Hazards that could cause an emergency in our community. More information on these hazards, and what you can do before, during and after an emergency, can be found on the HB Emergency Website (www.hbemergency.govt.nz).

These Hazards, perceived likelihood and impact, warning type, and immediate actions were decided with the community.

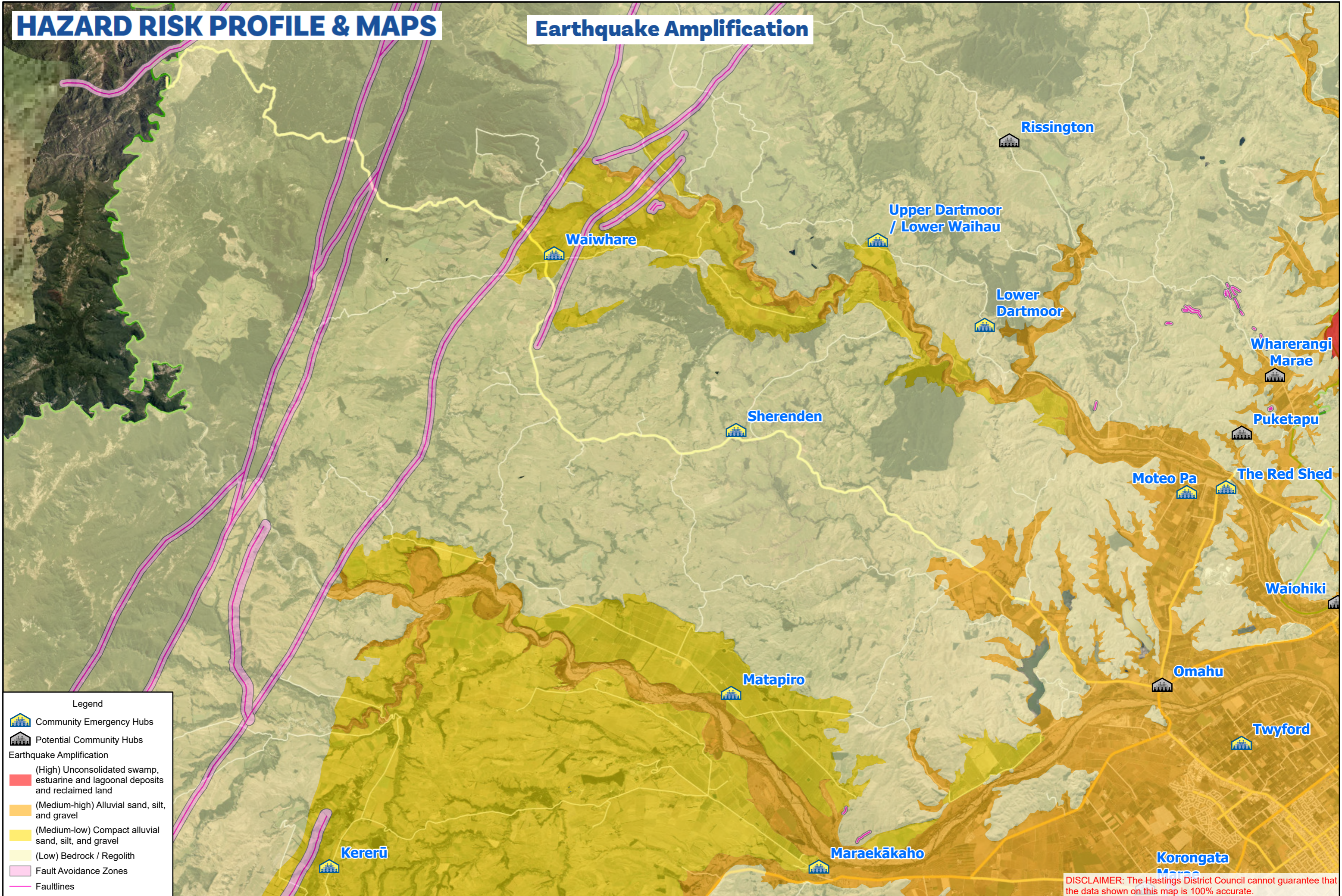
HAZARD (perceived likelihood & impact)	WARNING & ACTIONS	IMPACTS
 <p>1. Drought</p>	<p>Warning - Notification (MPI), MetService .</p> <p>Actions:</p> <ul style="list-style-type: none"> ☒ Take note of information and assistance provided by MPI, Council and Industry organisations. ☒ Contact Rural Support Trust ☒ Monitor stock feed supplies ☒ Consider financial implications, talk to your bank. 	<ul style="list-style-type: none"> • Stock losses, destocking. • Vegetation die-off. • Increased fire risk. • Economic impacts. • Human and animal distress. • Wildlife impacts. • Water conservation.
 <p>2. Wildfire (Forestry or Vegetation)</p>	<p>Warning - Natural (Smoke). FENZ warning.</p> <p>Actions:</p> <ul style="list-style-type: none"> • Evacuate to an unaffected area. • Preferably stay with friends or family out of the hazardous area. • Move stock early to sheltered paddocks. 	<ul style="list-style-type: none"> • Damage to buildings. • Restrictions to the areas people can access. • Impact on infrastructure, services, and commercial activities.
 <p>3. Critical Infrastructure Failure (roads, bridges & power)</p>	<p>Warning - Unplanned loss of service. HB Emergency Management Office (EMO), HDC, HBRC, NZTA and Unison websites, and social media.</p> <p>Actions:</p> <ul style="list-style-type: none"> • Shelter in place. • Check on neighbours and friends in the area. • Activate backup power systems. 	<ul style="list-style-type: none"> • Restrictions to the areas people can access. • May cause distress or health issues for people.

HAZARD <small>(perceived likelihood & impact)</small>	WARNING & ACTIONS	IMPACTS
 <p>4. Storm, Flood, and Severe Weather</p>	<p>Warning - MetService warning. Information disseminated by HB EMO and council.</p> <p>Actions:</p> <ul style="list-style-type: none"> • Self-evacuate to high ground if you see floodwater rising. • Do not wait for an official warning. • Preferably stay with friends or family out of the hazardous area. • Move stock early to safe paddocks. 	<ul style="list-style-type: none"> • Flooding and landslides. • Damage from high wind. • Loss of electricity. • Evacuation of flood zones. • Isolated communities.
 <p>5. Landslide</p>	<p>Warning - Landslides can happen without warning but may be triggered by other hazards.</p> <p>Actions:</p> <ul style="list-style-type: none"> • Evacuate to an unaffected area. • Preferably stay with friends or family out of the hazardous area. • Manage roaming stock. 	<ul style="list-style-type: none"> • Blocked access to roads and properties. • Damaged lifelines infrastructure. • Further landslides may occur.
 <p>6. Earthquake</p>	<p>Warning - Earthquakes are rapid onset events and occur without warning.</p> <p>Actions:</p> <ul style="list-style-type: none"> • Drop, Cover, Hold, including during following aftershocks. 	<ul style="list-style-type: none"> • Damage to buildings, roads and bridges. • Loss of water, electricity, and communication. • Isolation and cut off communities.
 <p>7. Biosecurity (animal & plant diseases/pests)</p>	<p>Warning - National notification (MPI)</p> <p>Actions:</p> <ul style="list-style-type: none"> • Surveillance programmes for pests and diseases to contain the outbreak. 	<ul style="list-style-type: none"> • Impact to native/indigenous species. • Impacts on agricultural businesses and communities.

HAZARD (perceived likelihood & impact)	WARNING & ACTIONS	IMPACTS
 <p>8. Volcanic Ashfall</p>	<p>Warning - Warning through GeoNet, HB EMO, and council.</p> <p>Actions:</p> <ul style="list-style-type: none"> • Shelter in place. • Disconnect downpipes to tank water. • Seal windows and doors. • DO NOT use vehicles or machinery until ashfall stops. • Move stock early to sheltered paddocks. 	<ul style="list-style-type: none"> • Damage to crops, vineyards and orchards. • Health impacts and difficulty breathing if ash is inhaled. • Disruption to electricity, communications, and services. • Damage to vehicles, routes, and houses.
 <p>9. Hazardous Substances</p>	<p>Warning - FENZ warning.</p> <p>Actions:</p> <ul style="list-style-type: none"> • Evacuate the immediate area. • Call 111 for assistance. • Identify the substance if safe to do so. 	<ul style="list-style-type: none"> • Contamination of land. • Poisoning of people and animals. • Damage to crops, vineyards and orchards. • Evacuation of affected areas.

HAZARD RISK PROFILE & MAPS

Earthquake Amplification

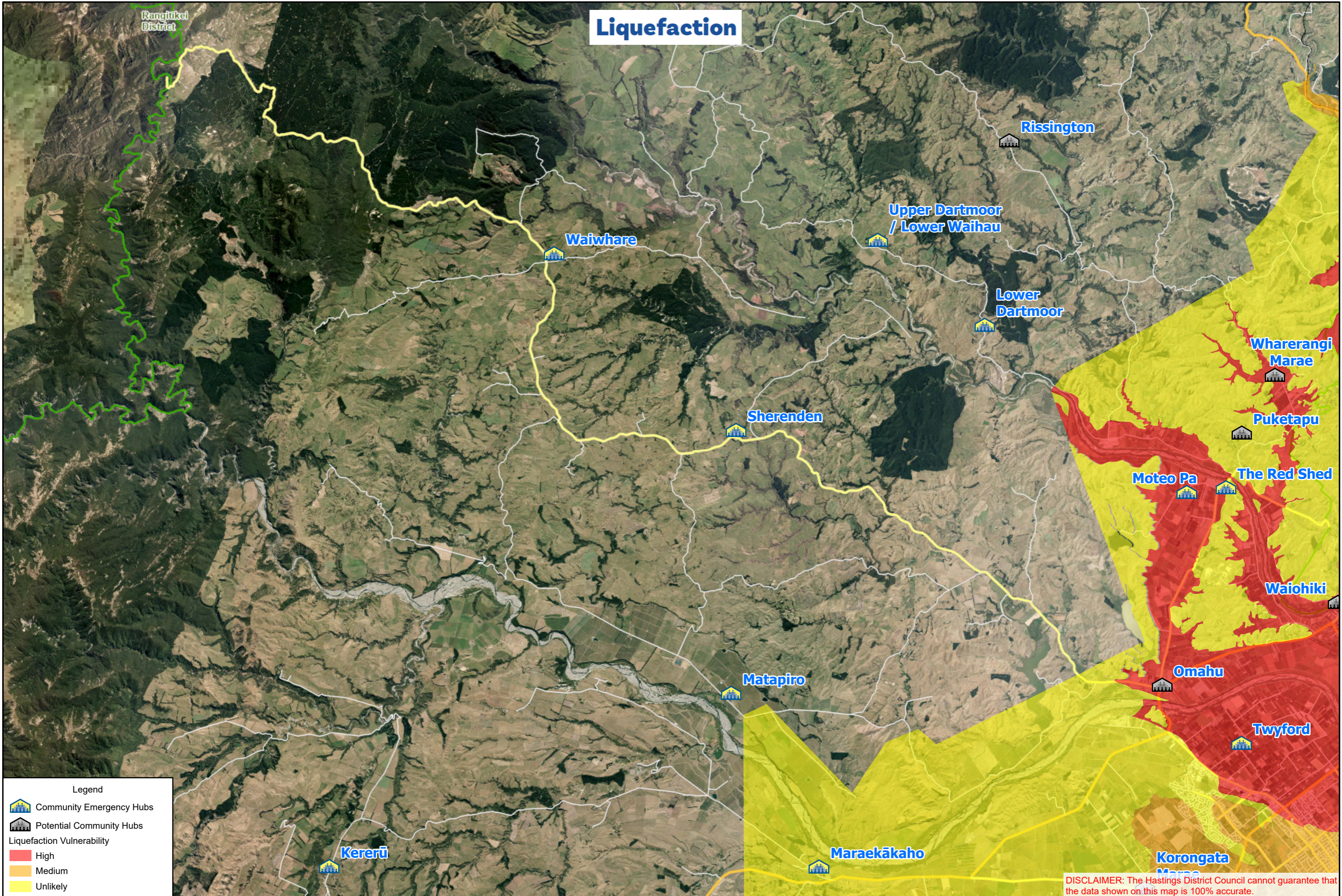


Legend

- Community Emergency Hubs
- Potential Community Hubs
- Earthquake Amplification**
- (High) Unconsolidated swamp, estuarine and lagoonal deposits and reclaimed land
- (Medium-high) Alluvial sand, silt, and gravel
- (Medium-low) Compact alluvial sand, silt, and gravel
- (Low) Bedrock / Regolith
- Fault Avoidance Zones
- Faultlines

DISCLAIMER: The Hastings District Council cannot guarantee that the data shown on this map is 100% accurate.

Liquefaction



Legend






- Community Emergency Hubs
- Potential Community Hubs
- Liquefaction Vulnerability**
- High
- Medium
- Unlikely

DISCLAIMER: The Hastings District Council cannot guarantee that the data shown on this map is 100% accurate.

Flooding



Legend

-  Community Emergency Hubs
-  Potential Community Hubs
- Flood Risk Areas**
-  Flood risk areas
-  Low risk areas
-  Outside modelled area

DISCLAIMER: The Hastings District Council cannot guarantee that the data shown on this map is 100% accurate.

VULNERABILITIES & VALUED STRENGTHS

	VULNERABILITIES	STRENGTHS
Social / Cultural	<p>All Areas</p> <ul style="list-style-type: none"> ○ Dispersed and transient urban community. This area consists of a diverse group of people. Some are living locally and working in town (Hastings & Napier), while others are day workers and staying in town. ○ High dependency medical patients in the area. ○ Access to medication (prescriptions). ○ Lack of education about individual preparedness. ○ People that are working in town might not be able to get back home and vice versa. This also include the risk of isolated/ separated children. ○ Has undergone a lot of change over the last few years. 	<p>All Areas</p> <ul style="list-style-type: none"> ○ Skills in the community (refer to Community Directory), including: <ul style="list-style-type: none"> ➤ Trades (Builders, Electricians, Plumbers). ➤ Farmers. ➤ Teachers. ➤ Contractors. ➤ Medical Professionals (Doctors, Nurses, Therapists). ○ Residents will have a minimum of a week’s food supply. ○ Access to machinery (diggers & loaders), chainsaws, fuel supplies, and water tanks via farmers & contractors. This is useful for clearing roads/tracks, etc. ○ Knowing your neighbours. <p>Matapiro</p> <ul style="list-style-type: none"> ○ RD9 Connected. ○ Realtime communications through the RD9 & B2R (Between Two Rivers) Facebook Pages.
Built	<p>All Areas</p> <ul style="list-style-type: none"> ○ Bridges, culverts, roads: <ul style="list-style-type: none"> ➤ White & Black bridges. ○ Access over the Fernhill (“White”) bridge as a key transport link. Need to improve the real time monitoring of the river level. ○ No services available in the community, such as stores, medical centres, etc. ○ Access to electricity, communications, and fresh water (rainwater supplies). ○ Farmers are reliant on power to pump water. 	<p>All Areas</p> <ul style="list-style-type: none"> ○ Majority of houses have water tanks. ○ Private generators (50% of houses) & starlinks (30% of houses). Note: Households need reminders to maintain their generators. ○ Community Halls to serve as Community Emergency Hubs (CEHs). There are three CEHs in the RD9 area. ○ Local schools in the area, such as the Pukehamoana School, Sherenden School, Otamauri Playcentre, etc. ○ There are two Fire Brigades in the area with VHF radios, Apps & Pagers. ○ The rural fire brigades can also transport water & provide first aid.

	VULNERABILITIES	STRENGTHS
Economic	<p>All Areas</p> <ul style="list-style-type: none"> ○ Main productive activity: Farming & forestry. ○ Stock movements & management are dependent on alternative routes. ○ Will lose a lot of fences during an earthquake affecting stock management. <p>Waiwhare</p> <ul style="list-style-type: none"> ○ Farms can easily be isolated & there are always the risk of injury. ○ Animal health risk if roads can't be used. ○ Water systems are reliant on power. ○ Cellphone towers & water pumps/chillers need power. <p>Matapiro</p> <ul style="list-style-type: none"> ○ Orchards, vineyards, and grazing form the economic foundation of the area. ○ Wild deer in the area on farms and roads. ○ The farms are smaller with less equipment available. 	<p>All Areas</p> <ul style="list-style-type: none"> ○ Access to meat & vegetables. ○ Access to fuel sources on farms.
Natural	<p>All Areas</p> <ul style="list-style-type: none"> ○ Water quality - untreated water. ○ Water contamination can lead to human diseases. ○ Slips, dropouts, and erosion. ○ Fallen trees - take care in windy conditions. <p>Matapiro</p> <ul style="list-style-type: none"> ○ Chemicals used for vineyards makes rainwater catchment dangerous. <p>Waiwhare</p> <ul style="list-style-type: none"> ○ Are dependant on rainwater (limited natural springs in the area). 	<p>All Areas</p> <ul style="list-style-type: none"> ○ Fireplaces can help with heating in homes.

COMMUNITY RESOURCES



Our community is the best source of resources to help each other.

What are the items, skills, people, and places we can identify within our community to use?

RESOURCES & CAPABILITY	
Places & Spaces	<p>All Areas</p> <ul style="list-style-type: none"> ○ There are airstrips on farms across the area for small planes to land and to drop-off supplies. ○ Community Halls to serve as Community Emergency Hubs (CEHs). <p>Waiwhare</p> <ul style="list-style-type: none"> ○ Waiwhare Community Centre, 27 River Road, Waiwhare, 4179 (CEH). [GPS Coordinates: -39.44922, 176.49502] ○ Otamauri Playcentre, 10 Otamauri Road, Otamauri, 4179 (Alternative CEH). [GPS Coordinates: -39.501281, 176.49905] <p>Sherenden</p> <ul style="list-style-type: none"> ○ Sherenden Hall, 2129 Taihape Road, Sherenden, 4179 (CEH). [GPS Coordinates: -39.50584, 176.57596] <p>Matapiro</p> <ul style="list-style-type: none"> ○ Matapiro & Districts Recreation Hall, 1288 Matapiro Road, Crownthorpe, 4179 (CEH). [GPS Coordinates: -39.59228, 176.57815] ○ The paddock next to the Community Hall can be used to put up a marquee to shelter people. ○ FENZ station. [GPS Coordinates: -39.57777, 176.55474]
Infrastructure	<p>All Areas</p> <ul style="list-style-type: none"> ○ Private generators, starlinks, and water supplies. ○ Various landing strips on farms (refer to Points of Interest map). Note: It may be possible to run a shuttle service between Bridge Pa and a pre-identified airstrip in RD9. ○ 3x AED Defibrillators: Waiwhare Community Centre; Sherenden Hall; and Matapiro & Districts Recreation Hall. <p>Sherenden</p> <ul style="list-style-type: none"> ○ 1x Generator at the Community Hall. <p>Matapiro</p> <ul style="list-style-type: none"> ○ Helicopter landing site at paddock next to Matapiro & Districts Recreation Hall.
Networks & Groups of People	<p>All Areas</p> <ul style="list-style-type: none"> ○ Neighbourhood Support Network group: B2R. ○ Community Facebook pages – RD9 Connected, RD9 & B2R: Messaging is going to everyone in the community. ○ FENZ volunteers. ○ Hall Committees. ○ School Boards & Kindy Boards.
Services in our Community	<p>All Areas</p> <ul style="list-style-type: none"> ○ Volunteer Fire Brigades. <p>Waiwhare</p> <ul style="list-style-type: none"> ○ Waiwhare Community Sports Centre and bar.

POTENTIAL IMPACTS & RESPONSES

IMPACT	HAZARD	RESPONSES	RESPONSIBILITY
Need to evacuate	Storm/Flood, Fire, Volcanic Ash, Landslide	<ul style="list-style-type: none"> Grab bags prepared. House/building security. Community Emergency Hub location with basic supplies and communications. If possible, move stock as early as possible to sheltered paddocks. 	<p>Individual Individual Community</p> <p>Individual</p>
Stuck at home	Earthquake, Storm/Flood, Volcanic Ash, Pandemic, Landslide	<ul style="list-style-type: none"> Households have additional food, water & medication supplies. Connect through the Neighbourhood Support Network & Community Hall Committees. Community Emergency Hubs with communications. 	<p>Individual</p> <p>Individual</p> <p>Community</p>
Can't get home	Earthquake, Storm/Flood, Fire, Volcanic Ash, Landslide, Infrastructure Failure	<ul style="list-style-type: none"> Pre-arranged plans including meeting points. Know evacuation points in Napier & Hastings. Communication through Community Emergency Hub network. 	<p>Individual</p> <p>Community</p>
Injuries/medical needs	All	<ul style="list-style-type: none"> Households with trained first aiders and first aid supplies. Community Emergency Hub first aid kits. List of medical professionals (refer Community Directory). 	<p>Individual</p> <p>Community</p> <p>Community</p>
No water	Earthquake, Storm/Flood, Fire, Volcanic Ash	<ul style="list-style-type: none"> Household water tanks. Household stores of bottled water. River water (requires boiling). 	<p>Individual</p> <p>Individual</p> <p>Individual</p>
No electricity	Earthquake, Storm/Flood, Fire, Landslide	<ul style="list-style-type: none"> Household generators - held by many farmers/contractors/residents. Sherenden Community Hall backup power generator. 	<p>Individual</p> <p>Community</p>
No communications (phone or internet)	Earthquake, Storm/Flood, Fire, Volcanic Ash	<ul style="list-style-type: none"> Private Starlinks - residents prepared to share access with other locals. Community Emergency Hub VHF radio. 	<p>Individual</p> <p>Community</p>
Loss of road access	Earthquake, Storm/Flood, Fire, Volcanic Ash, Landslide	<ul style="list-style-type: none"> Alternative access routes (refer to maps). Farm/contractor machinery available to restore road access. 	<p>Community</p> <p>Community</p>

* **REMEMBER: It is your personal responsibility to be prepared first, in case of an emergency.**

RESILIENCE TOOLS

TOOLS		STATUS
1.	Personal preparedness enablers: Household Plan & Grab & Go Bag.	In Progress
2.	Community resilience & hub training, including lanyards roles.	Completed
3.	Community events - Friday nights at the Waiwhare Community Centre & School quiz nights.	On Going
4.	Social media: RD9 Connected, RD9 & B2R.	On Going
5.	Regular hub co-ordinator get-togethers.	On Going

STAY?

ME NOHO?

SHELTER IN PLACE

Me Noho Ki Taua Wāhi



Our hazard decision path



Earthquake • He Rū

Our FIRST response:



Our SECOND response:

Was that long? (more than a minute)
Was that strong? (hard to stand up)

NO

YES



Tsunami • He Ngaru Taitoko

Are we in a tsunami zone?

NO

YES



Flood • He Waipuke

Are we in a flood zone?

Are we in danger from rising water?

NO

YES



Fire • He Kāpura

Go to agreed assembly area



Volcanic ash He Pungarehu Puia



Hazardous substance Ngā Matū Pūmate

OR GO?

ME HAERE RĀNEI?



Take the designated route to our safe location.

EVACUATE

Me Haere



IN AN EMERGENCY YOU WILL NEED:



AN EMERGENCY PLAN

Make a plan for your household, whānau and pets to get through an emergency, consider;

- Where will you meet or evacuate to?
 - How will you look after each other?
 - Who might need our help?
 - Who will we need to contact?
 - What will we do if we are stuck at home?
 - What will we do if we have no power, no water, no way to get information?
-



EMERGENCY SUPPLIES

You don't have to have them all in one place, but you might have to find them in a hurry and/or in the dark, store:

- Three litres of water per person per day.
 - First aid kit.
 - Long-lasting food that doesn't need cooking, or a way to safely cook or heat food without electricity, and extra fuel.
 - Consider also specific food needs of babies, children and pets.
 - Torch.
 - Emergency cash.
 - Half a tank of fuel in your vehicle.
 - Toilet paper and large plastic buckets for an emergency toilet.
 - Work gloves and a properly fitted mask.
-



EMERGENCY GRAB BAG

Pack your emergency grab bag with basic supplies including:

- Walking shoes, warm clothes, raincoat, and hat.
 - Water and snack food (remember babies and pets too).
 - Hand sanitizer & face mask.
 - Portable phone charger.
 - Cash.
 - Copies of important documents and Photo ID.
 - Medication.
 - Small first aid kit.
-

Remember your grab bag should be light enough that you can still carry it.

APPENDIX A: INTERNAL & EXTERNAL COMMUNICATION

Communication: Internal

The following table lists the different methods the community can use to communicate with each other:

	AREA/GROUP	NEED/ISSUE	APPROACH
1.	All areas	Welfare checks on people in the community.	<ul style="list-style-type: none">○ Check-in on neighbours.○ Facebook groups: RD9 Connected, RD9 & B2R.○ Rural postie.○ Forestry radio.○ FENZ radio.○ HDC VHF radio at CEH.○ A Messenger Group.○ Community newsletter.

APPENDIX A: INTERNAL & EXTERNAL COMMUNICATION

Communication: Emergency Agencies

The following table lists the contact details for Emergency Agencies:

Monitor the following sources of information to stay informed:

Television | Radio [Frequencies: 90.3FM, 89.5FM, 97.5FM, 94.5FM]

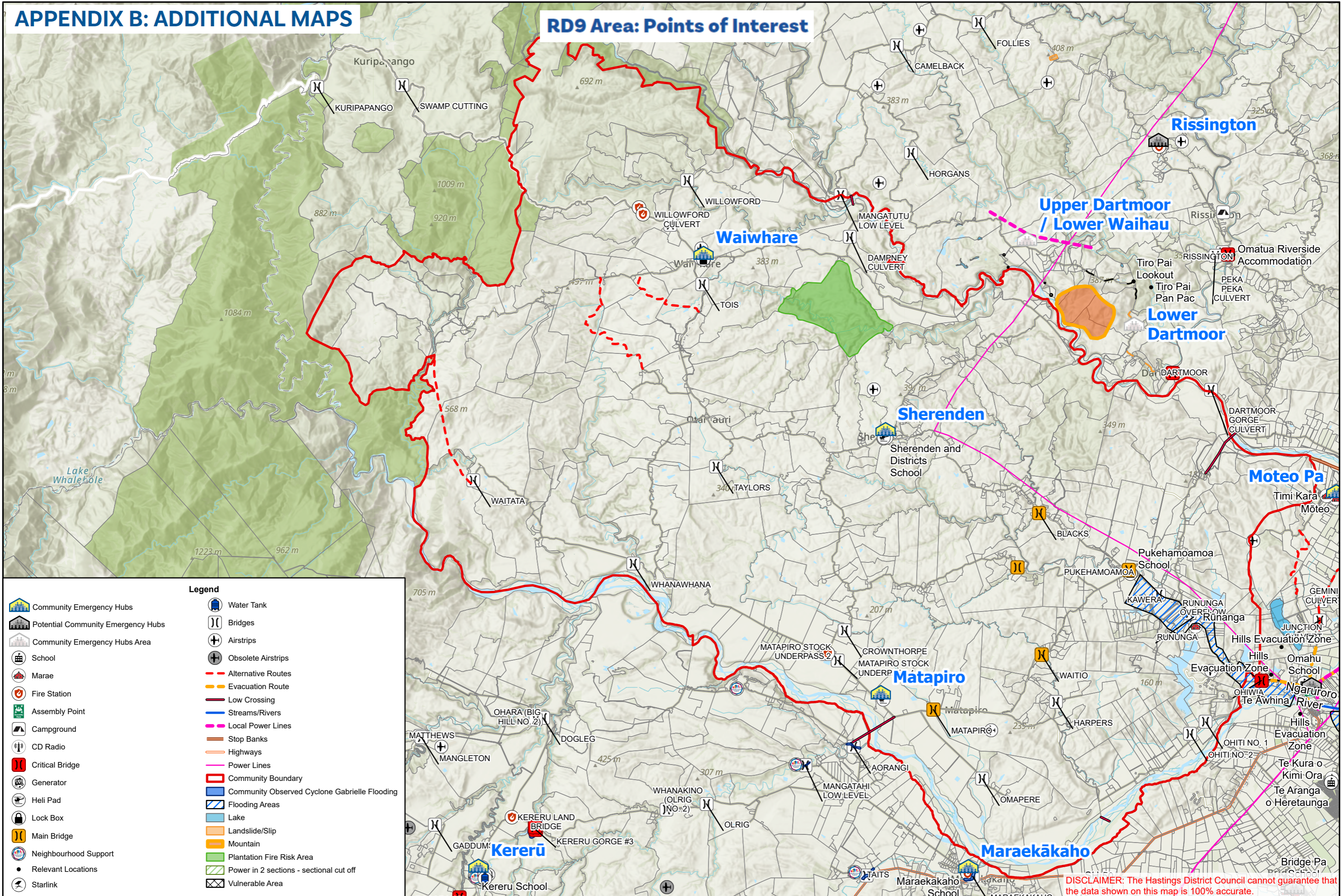
Online Websites & Social Media (Official & Community Pages)

IMPORTANT: Call **111** for all urgent or emergency situations.

AGENCY	NEED/ISSUE	CONTACT/SOURCES OF INFORMATION
Police	Risk to people or property.	Urgent: Call 111 OR Non-urgent: Call 105 or online
Fire & Emergency New Zealand (FENZ)	Risk to people or property.	Call 111
Ambulance (St John)	Risk to people.	Call 111
Hawke's Bay Emergency Management Office	Warnings, alerts, advice and key information before, during and after an emergency.	Online: https://www.hbemergency.govt.nz/ OR Facebook – HB Civil Defence Emergency Management Group.
MetService	Severe weather warnings, alerts.	Online https://www.metservice.com/warnings/home
Hastings District Council	Status of: <ul style="list-style-type: none"> Local roads (i.e. not state highways). Urban water supply. Urban wastewater (sewerage). Solid waste/rubbish collection and disposal. 	Call (06) 871 5000 (24/7) OR Email: customerservice@hdc.govt.nz (Monday to Friday 9am – 5pm) Facebook - Hastings District Council - Te Kaunihera ā-Rohe o Heretaunga Road status: https://www.hastingsdc.govt.nz/services/roads-and-streets/road-works
New Zealand Transport Agency (NZTA) / Waka Kotahi	Status of State Highways.	Call: 0800 4 HIGHWAYS or (0800 44 44 49) Online: https://www.journeys.nzta.govt.nz/highway-conditions/ OR Facebook – NZ Transport Agency Waka Kotahi – Hawke's Bay & Gisborne
Unison Networks	Status of power supply.	Call 0800 2 UNISON or 0800 2 86476 OR Online https://www.unison.co.nz/outages/
Hawke's Bay Regional Council (HBRC)	Status of: <ul style="list-style-type: none"> Rainfall. River levels and flows. Flood control and drainage. Air quality. 	Call (06) 835 9200 (24/7) OR 0800 108 838 OR Email: info@hbrc.govt.nz (Monday to Friday 8am – 5pm) OR Facebook – Hawke's Bay Regional Council

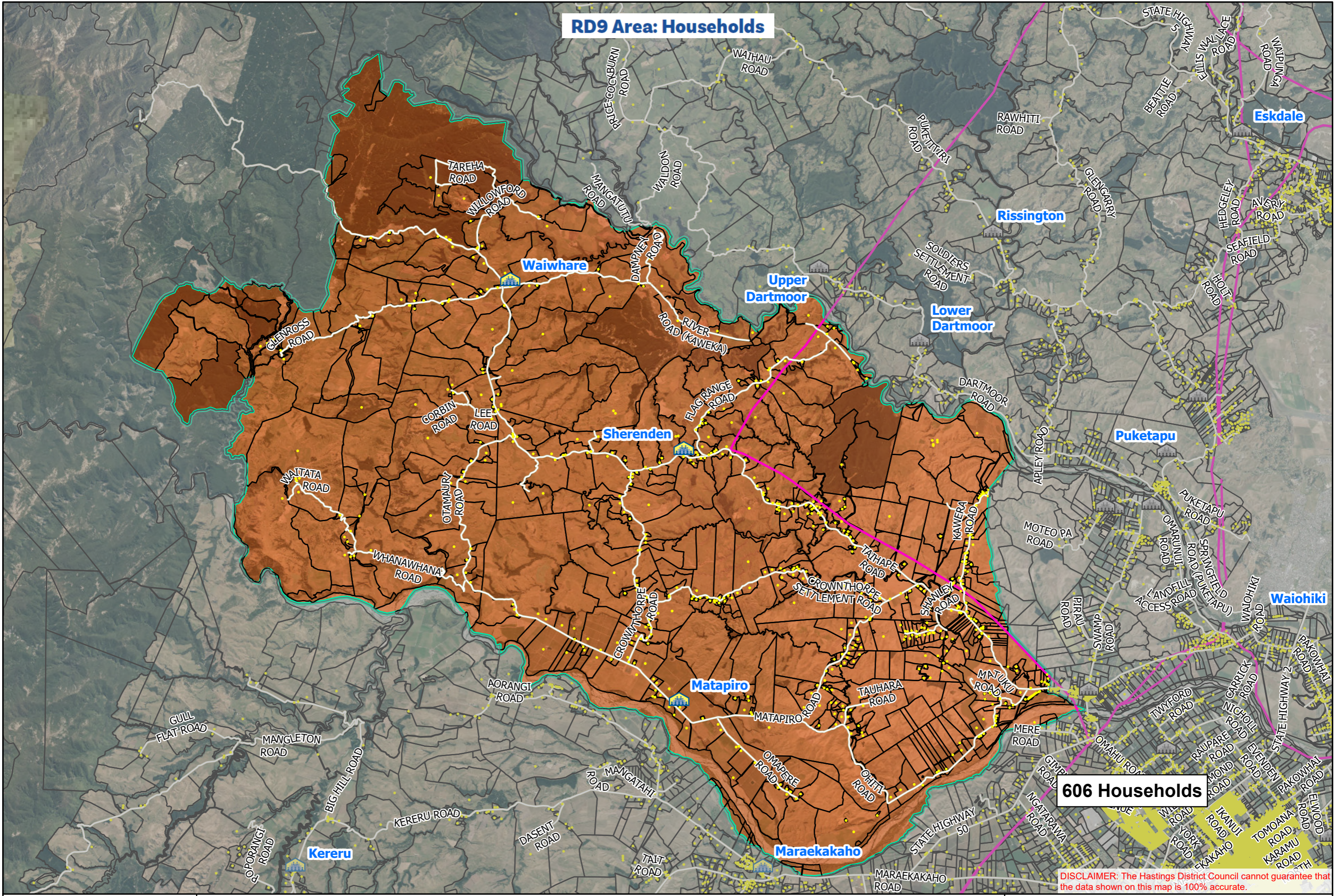
APPENDIX B: ADDITIONAL MAPS

RD9 Area: Points of Interest



Overview of RD9 (Waiwhare, Sherenden & Matapiro) Points of Interest

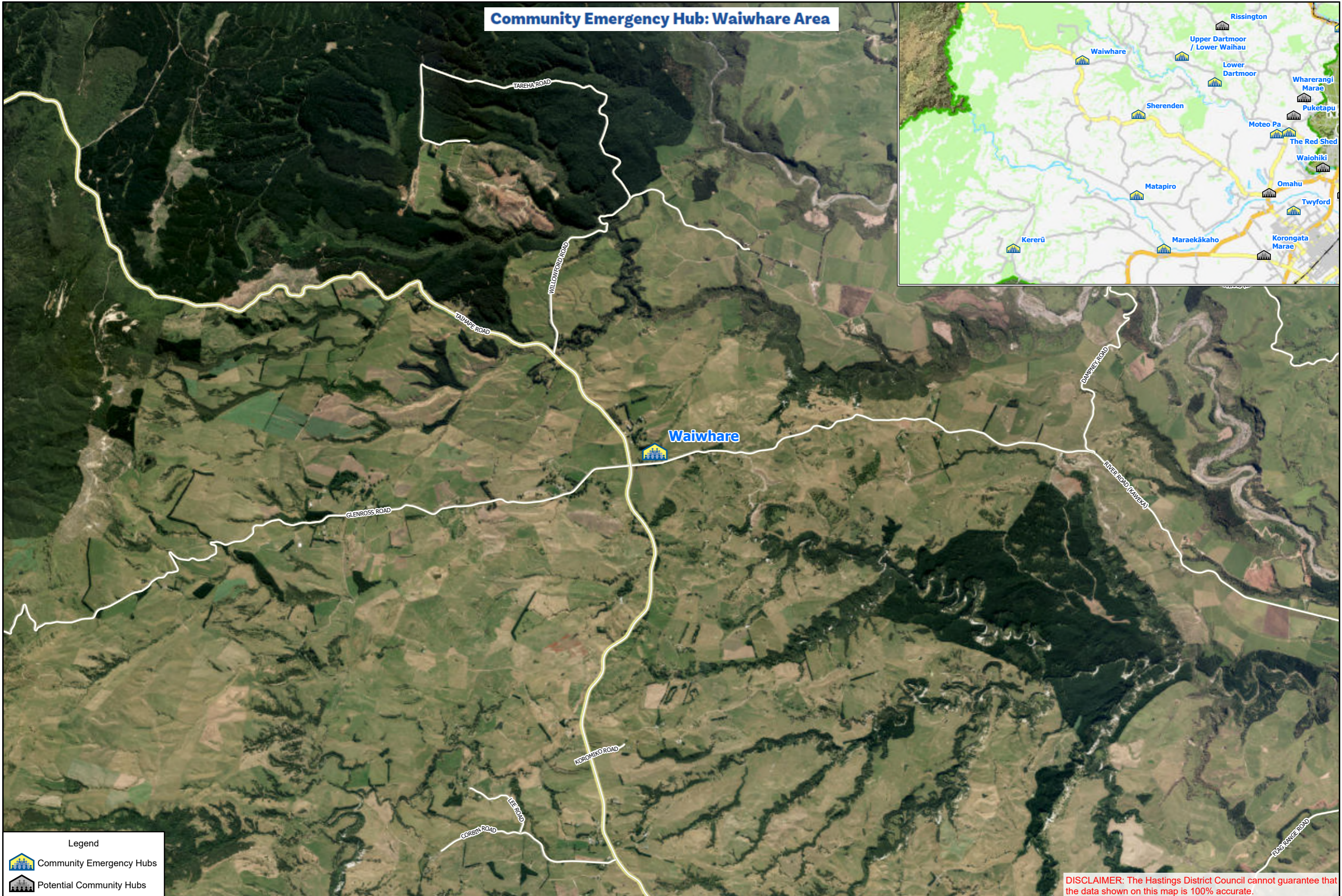
RD9 Area: Households



606 Households

DISCLAIMER: The Hastings District Council cannot guarantee that the data shown on this map is 100% accurate.

Community Emergency Hub: Waiwhare Area



Legend

- Community Emergency Hubs
- Potential Community Hubs



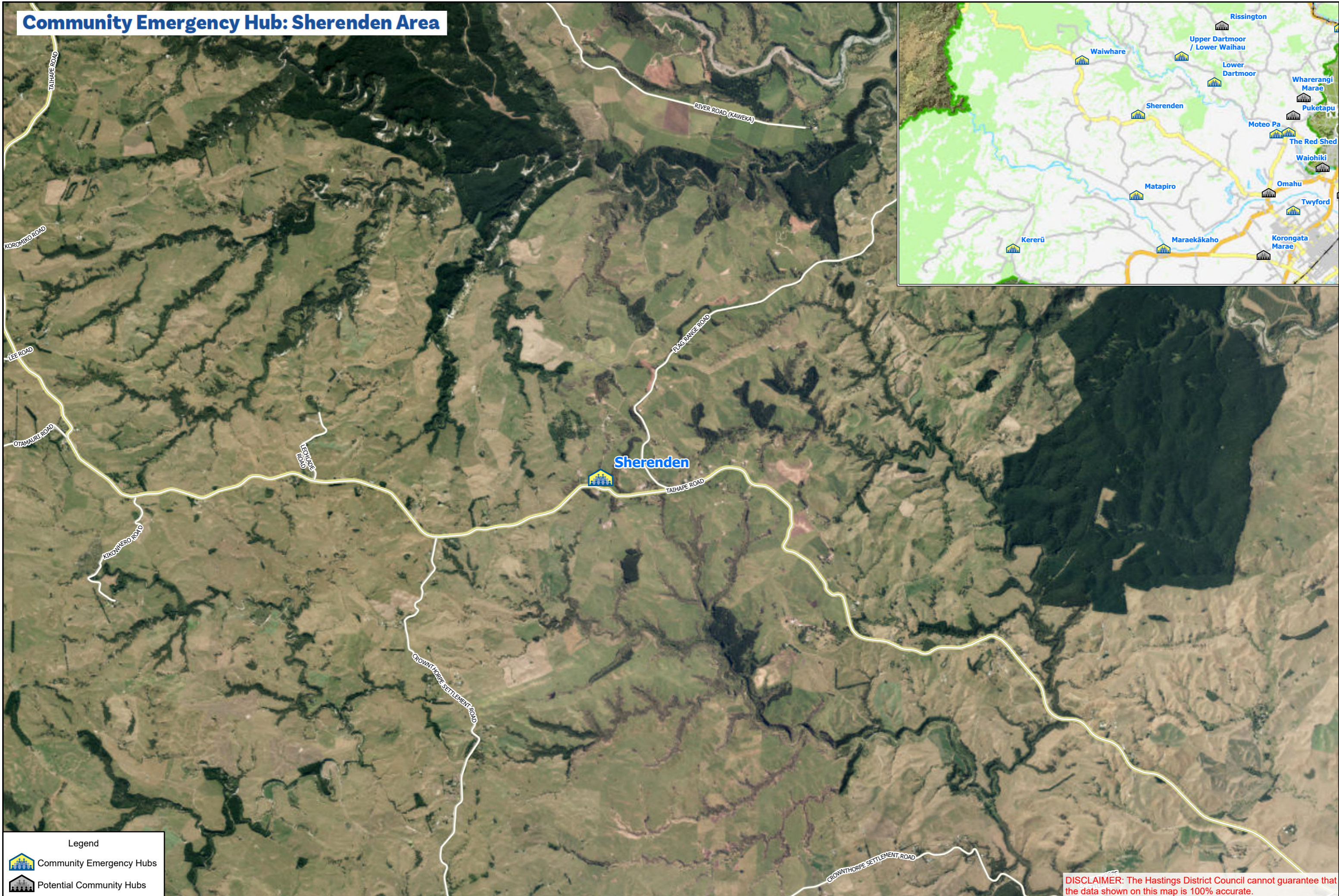
Community Emergency Hub: Waiwhare

0 350 700 1,400
Meters
Scale: 1:40,000

Original Size: A3
Date: Thursday, 4 December 2025
Projection: NZTM / Datum: D_NZGD_2000
Map Produced using ArcGIS Pro

DISCLAIMER: The Hastings District Council cannot guarantee that the data shown on this map is 100% accurate.

Community Emergency Hub: Sherenden Area



Legend

- Community Emergency Hubs
- Potential Community Hubs



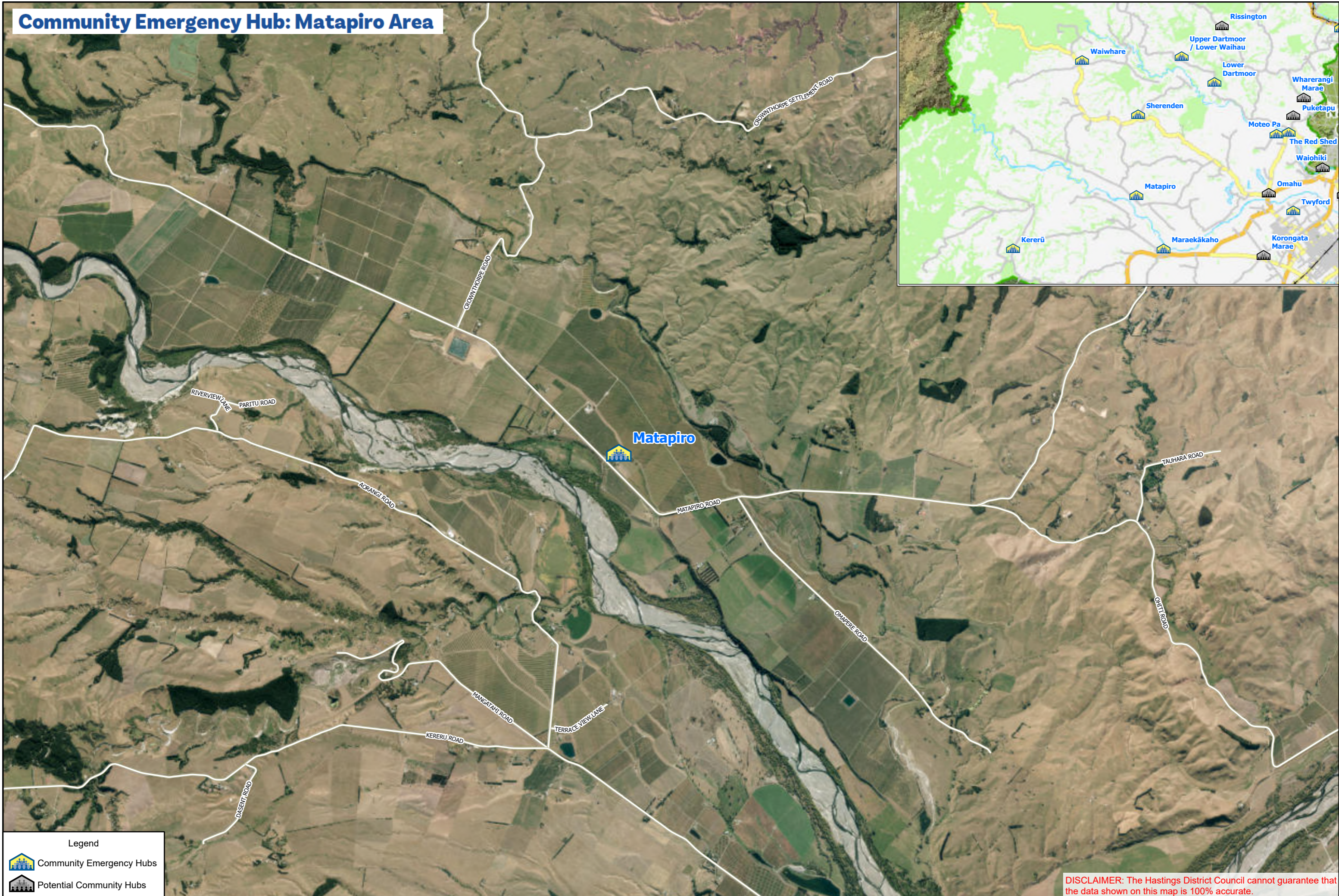
Community Emergency Hub: Sherenden

DISCLAIMER: The Hastings District Council cannot guarantee that the data shown on this map is 100% accurate.

0 350 700 1,400
Meters
Scale: 1:40,000

Original Size: A3
Date: Thursday, 4 December 2025
Projection: NZTM / Datum: D_NZGD_2000
Map Produced using ArcGIS Pro

Community Emergency Hub: Matapiro Area



Legend

- Community Emergency Hubs
- Potential Community Hubs

DISCLAIMER: The Hastings District Council cannot guarantee that the data shown on this map is 100% accurate.



Community Emergency Hub: Matapiro

0 350 700 1,400
Meters
Scale: 1:40,000

Original Size: A3
Date: Thursday, 4 December 2025
Projection: NZTM / Datum: D_NZGD_2000
Map Produced using ArcGIS Pro