



HE MAHERE OHOTATA MŌ
TE HAPORI

Southern Coast Area

(Waipuka/Ocean Beach - Waimārama)

Community Resilience Plan



**HERETAUNGA
HASTINGS** DISTRICT COUNCIL



HAWKE'S BAY
EMERGENCY MANAGEMENT

GROUP

hbemergency.govt.nz

Date: 17 November 2025 Version: 2.1 Approved By:

Emergency Management Operations Team Leader

RĀRANGI TAKE

Contents

Kupu arataki

INTRODUCTION	1
What to do during and after an emergency	4
What hazards do we have?	6
Hazard profiles & maps	10
Strengths & vulnerabilities	12
Community resources & capability	14
Potential impacts & responses	17
Resilience tools	19
In an emergency you will need	21
Appendices & resources	22

KUPU ARATAKI

INTRODUCTION

The purpose of this Community Resilience Plan is to help our community to ensure measures are in place to help us look after each other before, during, and after an emergency.

This writing and information within this plan comes from our community.



Description of our community

The geographical area for the Plan includes Waipuka/Ocean Beach, Waimārama and the surrounding rural area.

Waipuka/Ocean Beach is a small settlement and popular swimming beach between Cape Kidnappers and Waimārama. Much of the land at the southern end is owned by the Ngāti Mihiora hapū (subtribe). Access to the beach is via the hapū's Pukepuke Tangiora Estate.

Waimārama is a popular coastal resort village with a normally resident population of around 240 in the urban area, with hundreds more in the surrounding rural areas on a mix of large farms and lifestyle properties. The Waimārama area has a rich cultural history and is home to three marae - Waimārama Marae, Waitangi Marae and Hinetemoa Marae. Unoccupied Bare Island (Te Motu-o-Kura) is a small island of the coast of Waimārama, once part of the mainland. Bare Island was occupied by Māori, who built a pā on the summit and fished from its shores.

The main attraction for most living in the area is the beautiful coastline that each of the settlements share along with the recreational activities that are associated with this - fishing, surfing, swimming and boating. On the flipside, the Southern Coast is at risk from coastal erosion, inundation and flooding.

This community includes the following areas:

- Waimārama Road from the intersection with Maraetōtara Road eastward, including adjoining minor roads;
- The eastern extent of Okaihau Road from Waitui Road;
- Te Apiti Road North from Waimārama Road to 826 Te Apiti Road North;
- All of Ocean Beach Road, including adjoining minor roads, Hapouri Station, and adjacent coastal area;
- All of Waimārama and Ocean Beach residential areas.

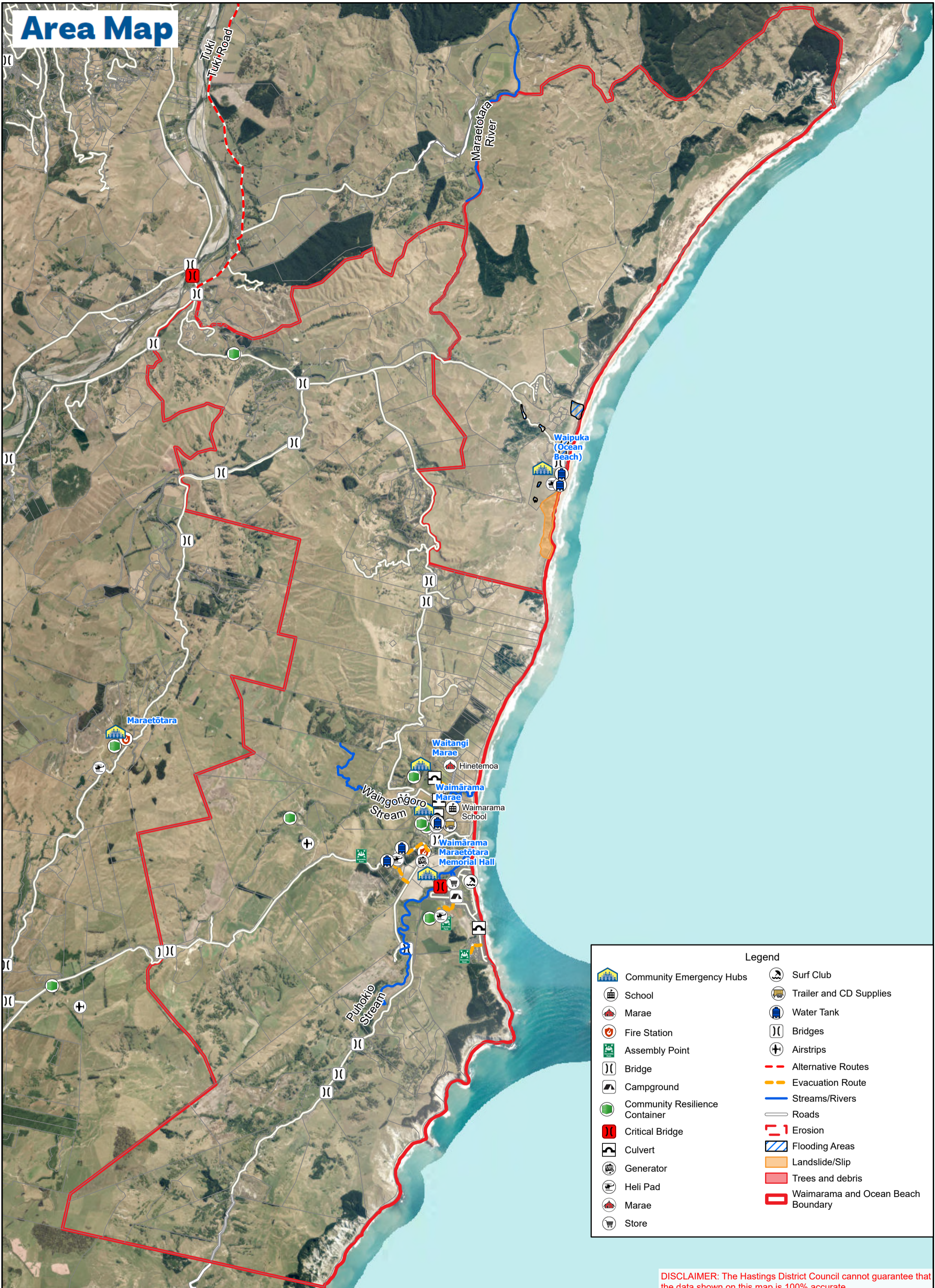
Plan Principles

This plan is based on the following key principles::

- Life safety is paramount, and all actions should aim to achieve this outcome.
- The communities are prepared to:
 - Self-evacuate as early as possible, or
 - Be self-sufficient for at least 14 days.
- Community support will be coordinated through:
 - Three Community Emergency Hubs in Waimārama at the Waitangi Marae, the Waimārama Marae, and the Waimārama Maraetōtara Memorial Hall.
 - A Community Emergency Hub in Waipuka (Ocean Beach), located above the primary residential area.

He waka eke noa
We are all working together

Area Map



Legend	
	Community Emergency Hubs
	School
	Marae
	Fire Station
	Assembly Point
	Bridge
	Campground
	Community Resilience Container
	Critical Bridge
	Culvert
	Generator
	Heli Pad
	Marae
	Store
	Surf Club
	Trailer and CD Supplies
	Water Tank
	Bridges
	Airstrips
	Alternative Routes
	Evacuation Route
	Streams/Rivers
	Roads
	Erosion
	Flooding Areas
	Landslide/Slip
	Trees and debris
	Waimārama and Ocean Beach Boundary

DISCLAIMER: The Hastings District Council cannot guarantee that the data shown on this map is 100% accurate.

I TE WĀ O TE OHOTATA

WHAT TO DO DURING AND AFTER AN EMERGENCY



STEP 1

Try to stay calm, check yourself and others in your household for injuries, for minor injuries provide first aid, then assess your home for damage.

Is everything ok?

NO



STEP 2

If you or anyone in your household have significant injuries call **111 immediately**.
If your home is not safe, **evacuate immediately and call 111**.

YES



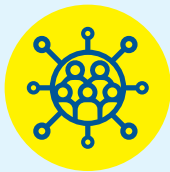
STEP 3

Check on your immediate neighbours. Assess your surroundings for damage, check on your street & neighbourhood.

If safe to proceed go to STEP 4



A place for your community to gather and help each other out during an emergency.



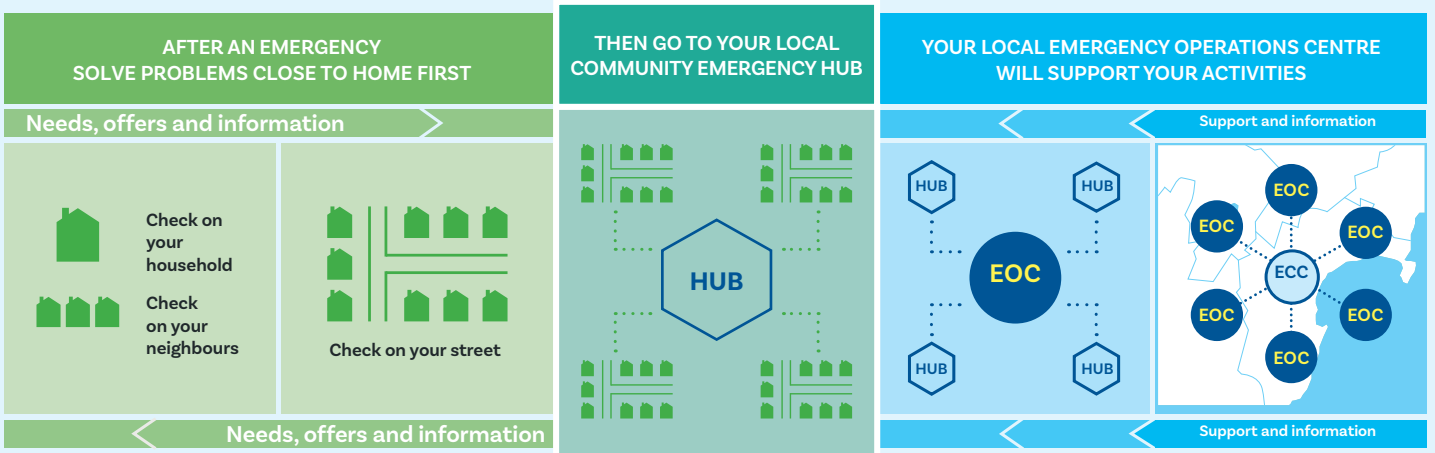
STEP 4

Go to your local Community Emergency Hub.

The Hub is a designated place where your community can gather, connect with one another, and solve problems using the skills and resources which already exist among your community.

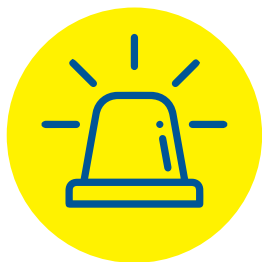
Community Emergency Hubs are a place for people to work together to solve problems locally while still coordinating with councils about big problems.

See pages 26 - 29 for maps of your local Hub locations.





During an emergency, councils will stand up an Emergency Operations Centre (EOC) to respond. The EOC will give support and information back into the community, and give information to the regional Emergency Coordination Centre (ECC).





WHAT HAZARDS DO WE HAVE?







Below is a list of the hazards that could cause an emergency in our community. More information on these hazards, and what you can do before, during and after an emergency, can be found on the HB Emergency Website (www.hbemergency.govt.nz).

These hazards, perceived likelihood and impact, warning type, and immediate actions were decided with the community.

HAZARD (perceived likelihood & impact)	WARNING & ACTIONS	IMPACTS
 <p>1. Earthquake/ Liquefaction</p>	<p>Warning - Earthquakes are rapid onset events and occur without warning.</p> <p>Actions:</p> <ul style="list-style-type: none"> • Drop, Cover, Hold, including during aftershocks. 	<ul style="list-style-type: none"> • Damage to buildings, roads and bridges. • Loss of water, electricity, and communication. • Isolation and cut off communities.
 <p>2. Tsunami</p>	<p>Local source tsunami warnings are primarily natural:</p> <ul style="list-style-type: none"> • Long or strong earthquake • Rapid retreat of the ocean • Unusual currents, noises and fizzing of the ocean <p>Distant source tsunami warnings will primarily be:</p> <ul style="list-style-type: none"> • Evacuations by emergency services e.g. door knocking • Road closures to prevent access to areas under threat • Media, including social media, radio, TV, internet etc <p>Actions:</p> <ul style="list-style-type: none"> • People from low-lying coastal areas will evacuate to higher ground without delay. 	<ul style="list-style-type: none"> • Inundation of coastal areas. • Property and infrastructure loss or damage, including loss of water, electricity and communications. • Loss of life, injuries and illnesses from contact with contaminated water or secondary effects. • Significant distress. • Strain on community resources. • Large scale displacement. • Economic and environmental impacts.

HAZARD <small>(perceived likelihood & impact)</small>	WARNING & ACTIONS	IMPACTS
 <p>3. Storm, Flood, and Severe Weather</p>	<p>Warning - MetService warning. Information disseminated by HB Emergency Management Office (EMO) and Council.</p> <p>Actions:</p> <ul style="list-style-type: none"> • Self-evacuate to high ground if you see floodwater rising. • Do not wait for an official warning. • Preferably stay with friends or family out of the hazardous area. 	<ul style="list-style-type: none"> • Flooding, coastal inundation and landslides. • Damage from high wind. • Loss of electricity. • Evacuation of flood zones. • Isolated communities.
 <p>4. Landslide</p>	<p>Warning - landslides can happen without warning but may be triggered by other hazards.</p> <p>Actions:</p> <ul style="list-style-type: none"> • Evacuate to an unaffected area. • Preferably stay with friends or family out of the hazardous area. 	<ul style="list-style-type: none"> • Blocked access to roads and properties. • Damaged critical infrastructure. • Further landslides may occur. • Injuries are possible.
 <p>5. Critical Infrastructure Failure (roads, bridges & power)</p>	<p>Warning - Unplanned loss of service. HB EMO, HDC, HBRC, NZTA and Unison websites, and social media.</p> <p>Actions:</p> <ul style="list-style-type: none"> • Shelter in place. • Check on neighbours and friends in the area. 	<ul style="list-style-type: none"> • Restrictions to the areas people can access. • Potential for isolation and inability to access services and resources. • May cause distress or impact on access to health services for people. • May cause economic impacts.
 <p>6. Drought</p>	<p>Warning - Notification (MPI, MetService)</p> <p>Actions:</p> <ul style="list-style-type: none"> • Take note of information and assistance provided by MPI, Council and Industry organisations. • Contact Rural Support Trust. • Monitor stock feed supplies. • Consider financial implications, talk to your bank. 	<ul style="list-style-type: none"> • Stock losses, destocking. • Vegetation die-off • Increased fire risk. • Economic impacts. • Human and animal distress. • Wildlife impacts.

HAZARD (perceived likelihood & impact)	WARNING & ACTIONS	IMPACTS
 <p>7. Heatwaves</p>	<p>Warning - Natural (temperatures well above average lasting for 2 days or more), MetService warning.</p> <p>Actions:</p> <ul style="list-style-type: none"> • Use curtains or other coverings to prevent sun entry into houses. • Drink plenty of water. • Stay in the shade, if possible. • Limit physical activity. • Wear light, breathable clothing. • Have a cool shower. • Provide plenty of water for animals, including wildlife. 	<ul style="list-style-type: none"> • Babies, elderly, physical workers, pregnant people, and those with serious or long-term illness are particularly vulnerable to heat stroke - potentially a life-threatening emergency. • Animal welfare concerns. • May increase fire risk.
 <p>8. Wildfire (Forestry or Vegetation)</p>	<p>Warning - Natural (Smoke). FENZ warning.</p> <p>Actions:</p> <ul style="list-style-type: none"> € Evacuate to an unaffected area. € Preferably stay with friends or family out of the hazardous area. 	<ul style="list-style-type: none"> • Damage to buildings. • Restrictions to the areas people can access. • Impact on infrastructure, services, and commercial activities.
 <p>9. Volcanic Ashfall</p>	<p>Warning - Warning through GeoNet, HB EMO, and HDC.</p> <p>Actions:</p> <ul style="list-style-type: none"> • Shelter in place. • Disconnect downpipes to tank water. • Seal windows and doors. • DO NOT use vehicles or machinery until ashfall stops. 	<ul style="list-style-type: none"> • Damage to crops and pasture. • Health impacts and difficulty breathing if ash is inhaled for humans and animals. • Disruption to electricity, communications, and services. • Damage to vehicles, routes, and houses.
 <p>10. Hazardous Substances</p>	<p>Warning - FENZ warning.</p> <p>Actions:</p> <ul style="list-style-type: none"> • Evacuate the immediate area. • Call 111 for assistance. • Identify the substance if safe to do so. 	<ul style="list-style-type: none"> • Contamination of land. • Poisoning of people and animals. • Damage to crops. • Evacuation of affected areas.

HAZARD (perceived likelihood & impact)	WARNING & ACTIONS	IMPACTS
 <p>11. Biosecurity (animal & plant diseases/pests)</p>	<p>Warning - National notification (MPI)</p> <p>Actions::</p> <ul style="list-style-type: none"> • Surveillance programmes for pests and diseases to contain the outbreak. 	<ul style="list-style-type: none"> • Impact to native/indigenous species. • Impacts on agricultural businesses and communities.
 <p>12. Structural Fire</p>	<p>Warning - Natural (smoke, visible fire). FENZ warning.</p> <p>Actions:</p> <ul style="list-style-type: none"> • Evacuate to an unaffected area. • Preferably stay with friends or family out of the hazardous area. 	<ul style="list-style-type: none"> • Damage to buildings. • Restrictions to the areas people can access. • Impact on infrastructure, services, and commercial activities.

HAZARD RISK PROFILE & MAPS

Tsunami Evacuation Zone



Waipuka
(Ocean
Beach)

Waitangi
Marae

Waimārama
Marae

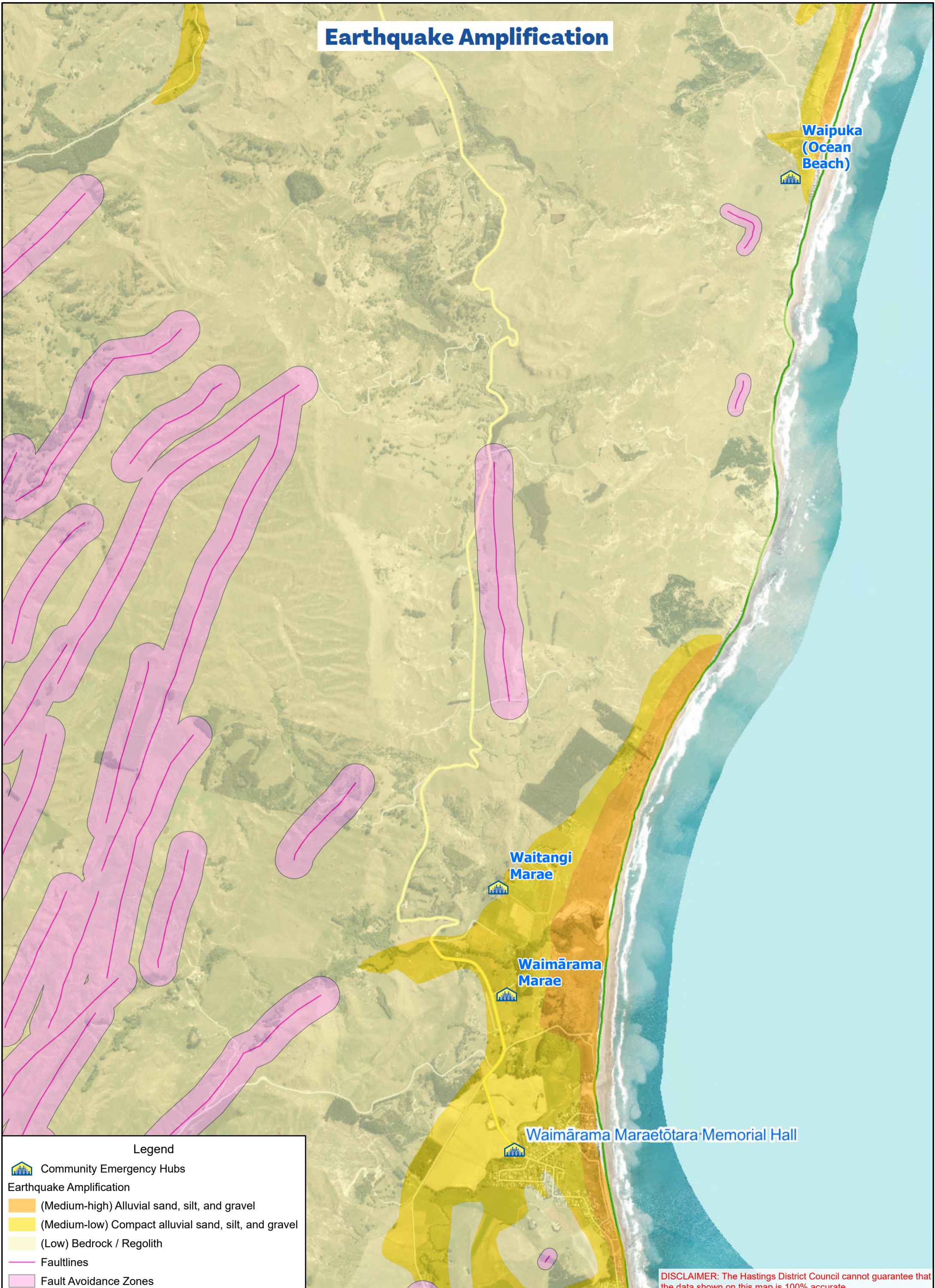
Waimārama
Maraetōtara
Memorial Hall

Legend

- Community Emergency Hubs
- Evacuation Route
- Tsunami Evacuation Zone

DISCLAIMER: The Hastings District Council cannot guarantee that the data shown on this map is 100% accurate.

Earthquake Amplification



Legend

- Community Emergency Hubs
- Earthquake Amplification**
- (Medium-high) Alluvial sand, silt, and gravel
- (Medium-low) Compact alluvial sand, silt, and gravel
- (Low) Bedrock / Regolith
- Faultlines
- Fault Avoidance Zones

DISCLAIMER: The Hastings District Council cannot guarantee that the data shown on this map is 100% accurate.

VULNERABILITIES & VALUED STRENGTHS

	VULNERABILITIES	STRENGTHS
<p>Social / Cultural</p>	<p>All Areas</p> <ul style="list-style-type: none"> ○ Limited access routes to neighbouring communities and to Hastings/ Havelock North urban centres. ○ People with serious health conditions necessitating regular visits to hospital or specialist home-based care. Access to health services and medication resupply is road travel dependent. ○ Communications infrastructure may fail, inhibiting local coordination and increasing anxiety. ○ Kaumatua / elderly, medically fragile, young children and disabled persons present may require additional support. ○ Complacency in emergency readiness. <p>Waimārama</p> <ul style="list-style-type: none"> ○ There are limited services in town – one shop and no medical facilities. ○ Approximately 240 people normally resident in town area. ○ Significant seasonal increase in population (can swell to thousands). ○ Many residents commute outside the local area for work – lowering the available local knowledge and support/resources during weekdays particularly. <p>Waipuka (Ocean Beach)</p> <ul style="list-style-type: none"> ○ Small normally resident population with majority of homes at low elevation ○ Significant seasonal increase in population, particularly with day visitors in Summer. 	<p>All Areas</p> <ul style="list-style-type: none"> ○ Skills in the communities, including: <ul style="list-style-type: none"> ● Volunteer Fire Service ● Farmers ● Teachers ● Contractors ● Builders ● Tradespeople ○ The Fire & Emergency NZ (FENZ) station in Waimārama also covers the Waipuka (Ocean Beach) community. ○ Access to machinery, chainsaws, fuel supplies, and water tanks via farmers & contractors. ○ Close-knit communities who know each other and their whenua well. ○ Strong and engaged community leaders. ○ Hazard awareness and knowledge of evacuation routes is generally high. <p>Waimārama</p> <ul style="list-style-type: none"> ○ Two marae and one community facility recognised as Community Emergency Hubs. <p>Waipuka (Ocean Beach)</p> <ul style="list-style-type: none"> ○ Well-equipped Community Emergency Hub in elevated position. ○ Long life food at Hub. ○ Strategy for vegetation maintenance reduces fuel load for fire spread hazard. ○ Ngati Mihiroa (Paki Paki) known and supportive self-evacuation option.

VULNERABILITIES & VALUED STRENGTHS

	VULNERABILITIES	STRENGTHS
Built	<p>All Areas</p> <ul style="list-style-type: none"> ○ No local petrol stations. ○ Power supply interruptions. ○ Fire fighting resources in some locations is limited (eg water resupply) and/or have poor access. ○ Bridges, culverts, roads: <ul style="list-style-type: none"> ● Waimārama Road, Okaitau Road, Ocean Beach Road all subject to potential closure. ● Bridges over the Tukituki River (Waimārama Road, Pourere Road and at Patangata) possible points of access failure. ○ Large proportions of residences in low-lying areas subject to flooding or coastal erosion /inundation. <p>Waimārama</p> <ul style="list-style-type: none"> ○ Reticulated water supply to Waimarama urban area. <p>Waipuka (Ocean Beach)</p> <ul style="list-style-type: none"> ○ Most households are on rainwater catchment. Some have access to spring-fed water backup. 	<p>All Areas</p> <ul style="list-style-type: none"> ○ Various private generators. <p>Waimārama</p> <ul style="list-style-type: none"> ○ Two Community Emergency Resource Communities in elevated positions. Additional supplies available at Waimārama and Waitangi Marae. ○ Waimārama Maraetōtara Memorial Hall, Waimārama Marae & Waitangi Marae in Waimārama to serve as Community Emergency Hubs (CEHs). <p>Waipuka (Ocean Beach)</p> <ul style="list-style-type: none"> ○ Ocean Beach Road is the one access road to the community, and is subject to closure.
Economic	<p>All Areas</p> <ul style="list-style-type: none"> ○ Main productive activity: Farming. ○ Many residents commute to main urban areas for work – isolation can have negative economic impact on household incomes. 	<p>All Areas</p> <ul style="list-style-type: none"> ○ Access to meat & vegetables.
Natural	<p>All Areas</p> <ul style="list-style-type: none"> ○ Water quality - untreated and unmonitored water (all areas except Waimārama reticulated supply). ○ Slips, dropouts and erosion. ○ Fallen trees - Take care in windy conditions. ○ Land contamination from sea spray (salination). <p>Waimārama</p> <ul style="list-style-type: none"> ○ Domestic water supplies are vulnerable with many needing to boil drinking water during emergencies. 	<p>All Areas</p> <ul style="list-style-type: none"> ○ Natural springs serve as supplemental water supply. ○ Access to kaimoana (seafood) and mara kai (food gardens).

COMMUNITY RESOURCES



Our community is the best source of resources to help each other.

What are the items, skills, people, and places we can identify within our community to use?

RESOURCES & CAPABILITY	
Places & Spaces	<p>All Areas</p> <ul style="list-style-type: none"> ○ There are airstrips on farms across the area for small planes to land and to drop-off supplies. ○ Community Halls and Marae to serve as Community Emergency Hubs. <p>Waimārama Community Emergency Hubs (CEH)</p> <ul style="list-style-type: none"> ○ Waimārama Marae, 6 Taupunga Road, Waimārama 4294 [GPS coordinates - 39°48'17.5"S 176°59'08.0"E] ○ Waitangi Marae, 111 Waitangi Road, Waimārama 4294 [GPS coordinates - 39°47'51.8"S 176°59'03.4"E] ○ Waimārama Maraetōtara Memorial Hall, 2282 Waimārama Road, Waimārama 4294 [GPS coordinates - 39°48'56.2"S 176°59'12.6"E] <p>Waipuka / Ocean Beach</p> <ul style="list-style-type: none"> ○ Community Emergency Hub and evacuation support site [GPS coordinates - 39°44'51.2"S 177°00'28.0"E]
Infrastructure	<p>All Areas</p> <ul style="list-style-type: none"> ○ Private generators and water supplies. ○ Each community has a Community Emergency Radio managed by and linked into Hastings District Council for emergency backup communications. ○ Various landing strips on farms (refer to Points of Interest map). ○ Helicopter landing sites identified at CEH sites. ○ Nearest major supermarket: New World Havelock North. <p>Waimārama</p> <ul style="list-style-type: none"> ○ AED's located at: <ul style="list-style-type: none"> ● Waimārama Marae. ● Rural Fire Shed - Waimārama. ● Waimārama General Store - Front Counter. ● Waimārama Surf Life Saving Club. ○ Generators <ul style="list-style-type: none"> ● Generators are held at the two Community Emergency Resource Containers, at Waimārama Marae and at Waitangi Marae.

	<ul style="list-style-type: none"> ○ 2 x Community Emergency Resource Containers located on high ground at: <ul style="list-style-type: none"> ● 288 Okaihau Road ● 53 Harper Road ○ The main access bridge (Puhokio Stream) is a key transport link for the local community. ○ Nearest local store - Waimārama Store. [Location: 20 Airini Road, Waimārama 4294]. <p>Waipuka / Ocean Beach</p> <ul style="list-style-type: none"> ○ AED's located at: <ul style="list-style-type: none"> ● Ocean Beach Kiwi Surf Life Saving Club ● Community Emergency Hub ○ The Community Emergency Hub has: <ul style="list-style-type: none"> ● Kitchen and cooking facilities ● 3 x rainwater fed 20,000L water tanks (plus plans to connect to nearby spring) ● Ablutions block with toilets and showers (on a septic system) ● Starlink and comms room ● Bunk rooms ● Intention to establish a mara kai also.
<p>Networks & Groups of People</p>	<p>All areas</p> <ul style="list-style-type: none"> ○ Connected to supporting councils (Hastings District Council and Hawke's Bay Regional Council) <p>Waimārama</p> <ul style="list-style-type: none"> ○ Surf Club ○ Volunteer Fire Brigade ○ Marae ○ Local Civil Defence volunteers ○ Coastguard ○ Fishermen & Divers ○ Hall Committee ○ Shop ○ Kura (School) ○ Church ○ Farmers and Landowners ○ Surfers ○ Hakikino (significant cultural site) ○ Kohanga (community-based te kohanga reo catering for ages 0-5 years) ○ Campground (approximately 100 sites) and visitors* <p><i>*Note: There are around 240 normally resident people in urban Waimārama. In summer, the number of people in Waimārama can exceed 5000 people.</i></p>

	<p>Waipuka (Ocean Beach)</p> <ul style="list-style-type: none"> ○ Waipuka Inc. ○ Ocean Beach Sanctuary - neighbourhood connections ○ Residents and whanau
<p>Services in our Community</p>	<p>All Areas</p> <ul style="list-style-type: none"> ○ Residents with trades skills ○ Farmers & contractors with diggers, tractors, bulldozers, bulk fuel supply and water tanks ○ First Aid kits: CEHs <p>Waimārama</p> <ul style="list-style-type: none"> ○ Rongoā (traditional medicinal) garden and practitioners ○ Mara kai (food gardens) ○ CB Radios & VHF Radios ○ Manaakitanga (strong local culture of hospitality, kindness, generosity, and mutual support, emphasizing the reciprocal care for others' well-being and the fostering of community) ○ Accommodation providers ○ Shop ○ Campground ○ Surf Club

POTENTIAL IMPACTS & RESPONSES

IMPACT	HAZARD	RESPONSES
Need to evacuate	Tsunami, Storm/Flood, Fire, Volcanic Ash, Landslide	<ul style="list-style-type: none"> • Grab bags prepared. • House/building/container security. • Community Emergency Hub & Emergency Resource Containers with basic supplies. • Community Emergency Hub locations with communications where available.
Stuck at home	Earthquake, Storm/Flood, Volcanic Ash, Pandemic, Landslide	<ul style="list-style-type: none"> • Households have additional food, water & medication supplies. • Connect through Neighbourhood Support Network, Marae & Community Hall Committees. • Community Emergency Hubs.
Can't get home	Earthquake, Tsunami, Storm/Flood, Fire, Volcanic Ash, Landslide	<ul style="list-style-type: none"> • Pre-arranged plans including meeting points. • Communication through Community Emergency Hub network.
Injuries/ medical needs	All	<ul style="list-style-type: none"> • Households with trained first aiders and first aid supplies. • Community Emergency Hub first aid kit. • List of medical professionals.
No water	Earthquake, Tsunami, Storm/Flood, Fire.	<ul style="list-style-type: none"> • Household water tanks. • Household stores of bottled water. • River water (requires boiling).
No electricity (loss of water pumping ability, loss of refrigeration / freezing ability)	Earthquake, Tsunami, Storm/Flood, Fire, Landslide	<ul style="list-style-type: none"> • Household generators - held by many farmers. • Fuel supply for generators from nearest fuel stations such as Havelock North.
No communications (phone or internet)	Earthquake, Tsunami, Storm/Flood, Fire, Volcanic Ash	<ul style="list-style-type: none"> • Private Starlinks - residents prepared to share access with other locals. • Community Emergency Hub VHF radio.
Loss of road access	Earthquake, Tsunami, Storm/Flood, Fire, Volcanic Ash, Landslide	<ul style="list-style-type: none"> • Alternative access routes (refer to maps). • Farm machinery available to restore road access.
Animal Welfare	Earthquake, Tsunami, Storm/Flood, Fire, Volcanic Ash, Landslide	<ul style="list-style-type: none"> • Maintain adequate supplies of animal food for 7 days. • Plan for animal welfare support, including provision of shelter, clean water, first aid and veterinary care.

IMPACT	HAZARD	RESPONSES
Non-resident visitor support	Earthquake, Tsunami, Storm/Flood, Fire, Volcanic Ash, Landslide	<ul style="list-style-type: none"> • In an emergency event where the road to town is impassable, support non-residents at the Community Emergency Hub. • Communicate needs to HDC for planning for evacuations and/or welfare support.
Food waste (due to power failure)	Earthquake, Tsunami, Storm/Flood, Fire, Volcanic Ash, Landslide	<ul style="list-style-type: none"> • Where food is deemed unsuitable or unsafe for human consumption, consider whether it may be used for animal feed. • Food waste can also be buried (away from water sources) to reduce smell, flies, and pests.
Contamination of stored water supplies	Earthquake, Tsunami, Storm/Flood, Fire, Volcanic Ash, Landslide	<ul style="list-style-type: none"> • Microorganism contamination of water can be corrected by the use of water treatment chemicals (following manufacturer recommendations), boiling, and filtration. • Contamination with silt or ash in low quantities may be able to be filtered for use, however high levels of particulate contamination will require dumping and cleaning of water storage tanks, and refilling with unaffected water supplies.
Inundated or damaged septic systems	Earthquake, Tsunami, Storm/Flood, Fire, Volcanic Ash, Landslide	<ul style="list-style-type: none"> • Treat all surface water from floods and tsunami as contaminated and hazardous to health. • Septic systems may need to be pumped out and/ or fixed by service providers.

RESILIENCE TOOLS

TOOLS		STATUS
1.	Personal preparedness enablers: Household Plan and Grab & Go Bag.	In Progress
2.	Community resilience & hub training, including lanyards roles.	Completed
3.	Community events.	On Going
4.	Social media: Community Facebook Groups.	On Going
5.	A flyer with key information can be dropped-off in mailboxes by the Rural Delivery Postie.	Available if required
6.	Regular hub co-ordinator get-togethers.	In Progress

STAY?

ME NOHO?

SHELTER IN PLACE

Me Noho Ki Taua Wāhi



Our hazard decision path



Earthquake • He Rū

Our FIRST response:



Our SECOND response:

Was that long? (more than a minute)
Was that strong? (hard to stand up)

NO

YES



Tsunami • He Ngaru Taitoko

Are we in a tsunami zone?

NO

YES



Flood • He Waipuke

Are we in a flood zone?

Are we in danger from rising water?

NO

YES



Fire • He Kāpura

Go to agreed assembly area.



Volcanic ash He Pungarehu Puia



Hazardous substance Ngā Matū Pūmate

OR GO?

ME HAERE RĀNEI?



EVACUATE

Me Haere

Take the designated route to our safe location.



IN AN EMERGENCY YOU WILL NEED:



AN EMERGENCY PLAN

Make a plan for your household, whānau and pets to get through an emergency, consider;

- Where will you meet or evacuate to?
 - How will you look after each other?
 - Who might need our help?
 - Who will we need to contact?
 - What will we do if we are stuck at home?
 - What will we do if we have no power, no water, no way to get information?
-



EMERGENCY SUPPLIES

You don't have to have them all in one place, but you might have to find them in a hurry and/or in the dark, store:

- Three litres of water per person per day.
 - First aid kit.
 - Long-lasting food that doesn't need cooking, or a way to safely cook or heat food without electricity, and extra fuel.
 - Consider also specific food needs of babies, children and pets.
 - Torch.
 - Emergency cash.
 - Half a tank of fuel in your vehicle.
 - Toilet paper and large plastic buckets for an emergency toilet.
 - Work gloves and a properly fitted mask.
-



EMERGENCY GRAB BAG

Pack your emergency grab bag with basic supplies including:

- Walking shoes, warm clothes, raincoat, and hat.
 - Water and snack food (remember babies and pets too).
 - Hand sanitizer & face mask.
 - Portable phone charger.
 - Cash.
 - Copies of important documents and Photo ID.
 - Medication.
 - Small first aid kit.
-

Remember your grab bag should be light enough that you can still carry it.

APPENDIX A: INTERNAL & EXTERNAL COMMUNICATION

Communication: Internal

The following table lists the different methods the community can use to communicate with each other:

AREA/GROUP	NEED/ISSUE	APPROACH
Waimārama	Sharing of Information	<ul style="list-style-type: none"> ○ Public Information Board at the Community Hub/s ○ Local Facebook Group/s and Pages ○ Newsletters ○ Noticeboards (Fire Station and Shop) ○ Public Meetings
	Welfare checks on people in the community	<ul style="list-style-type: none"> ○ Door-knocking ○ Phonecalls (where contact numbers are known) ○ Via attendance at Community Emergency Hub/s.
Waipuka (Ocean Beach)	Sharing of Information	<ul style="list-style-type: none"> ○ Public Information Board at the Community Hub ○ Local Facebook Group/s and Pages ○ Local website ○ Newsletters ○ Public Meetings
	Welfare checks on people in the community	<ul style="list-style-type: none"> ○ Door-knocking ○ Phonecalls (where contact numbers are known) ○ Via attendance at Community Emergency Hub.

Communication: Emergency Agencies

The following table lists the contact details for Emergency Agencies:

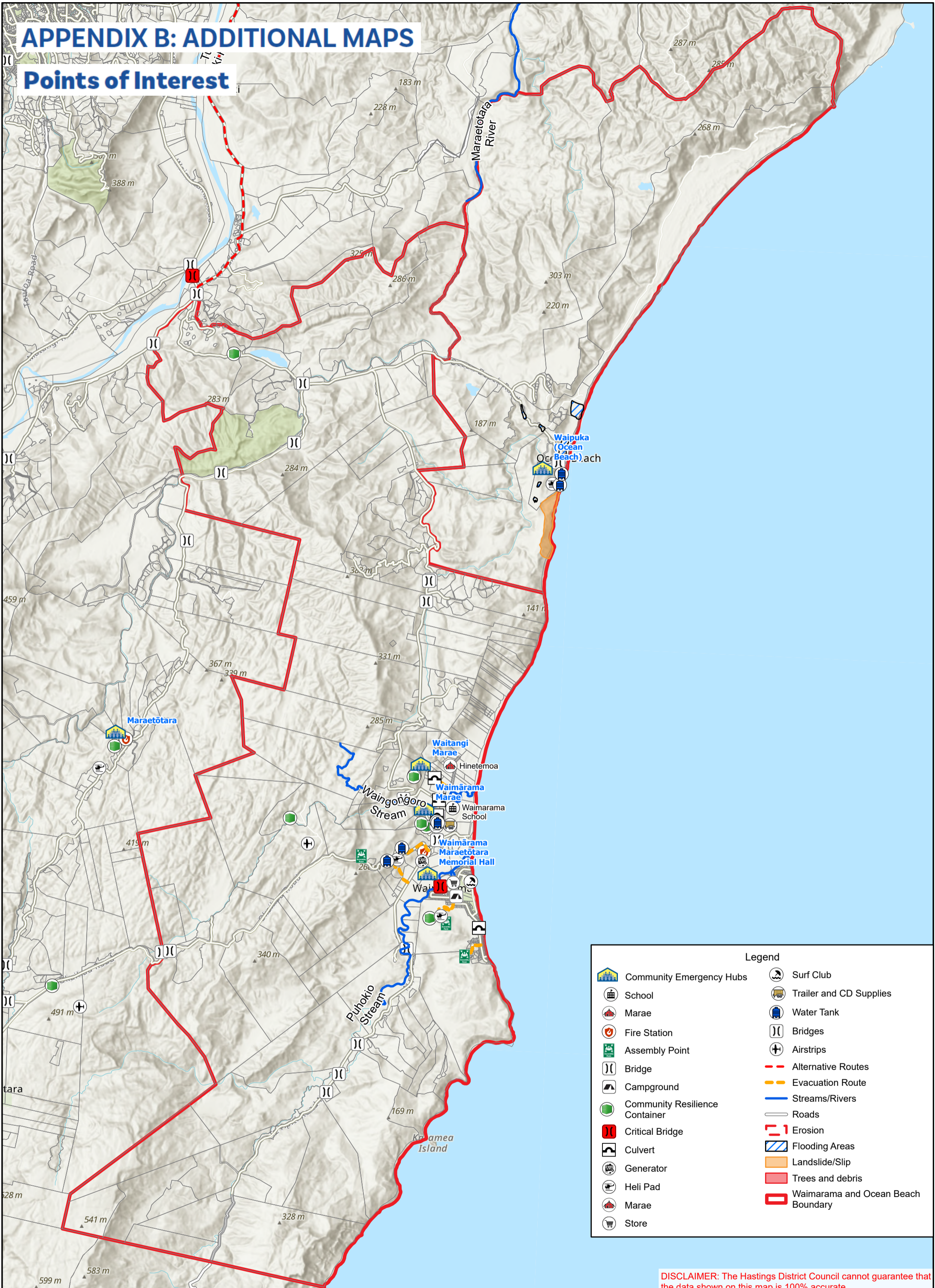
Monitor the following sources of information to stay informed:
Television | Radio [Frequencies: 90.3FM, 89.5FM, 97.5FM, 94.5FM]
Online Websites & Social Media (Official & Community Pages)

IMPORTANT: Call 111 for all urgent or emergency situations.

AGENCY	NEED/ISSUE	CONTACT/SOURCES OF INFORMATION
Police	Risk to people or property	Urgent: Call 111 OR Non-urgent: Call 105 or online
Fire & Emergency New Zealand (FENZ)	Risk to people or property	Call 111
Ambulance (St John)	Risk to people	Call 111
Hawke's Bay Emergency Management Office	Warnings, alerts, advice and key information before, during and after an emergency.	Online: https://www.hbemergency.govt.nz/ OR Facebook – HB Civil Defence Emergency Management Group.
MetService	Severe weather warnings, alerts.	Online https://www.metservice.com/warnings/home
Hastings District Council	Status of: <ul style="list-style-type: none"> local roads (i.e. not state highways) Urban water supply Urban wastewater (sewerage). Solid waste/rubbish collection and disposal. 	Call (06) 871 5000 (24/7) OR Email: customerservice@hdc.govt.nz (Monday to Friday 9am – 5pm) Facebook - Hastings District Council - Te Kaunihera ā-Rohe o Heretaunga Road status: https://www.hastingsdc.govt.nz/services/roads-and-streets/road-works
New Zealand Transport Agency (NZTA) / Waka Kotahi	Status of State Highways	Call: 0800 4 HIGHWAYS or (0800 44 44 49) Online: https://www.journeys.nzta.govt.nz/highway-conditions/ OR Facebook – NZ Transport Agency Waka Kotahi – Hawke's Bay & Gisborne
Unison Networks	Status of power supply	Call 0800 2 UNISON or 0800 2 86476 OR Online https://www.unison.co.nz/outages/
Hawke's Bay Regional Council (HBRC)	Status of: <ul style="list-style-type: none"> Rainfall. River levels and flows. Flood control and drainage. Air quality. 	Call (06) 835 9200 (24/7) OR 0800 108 838 OR Email: info@hbrc.govt.nz (Monday to Friday 8am – 5pm) OR Facebook – Hawke's Bay Regional Council

APPENDIX B: ADDITIONAL MAPS

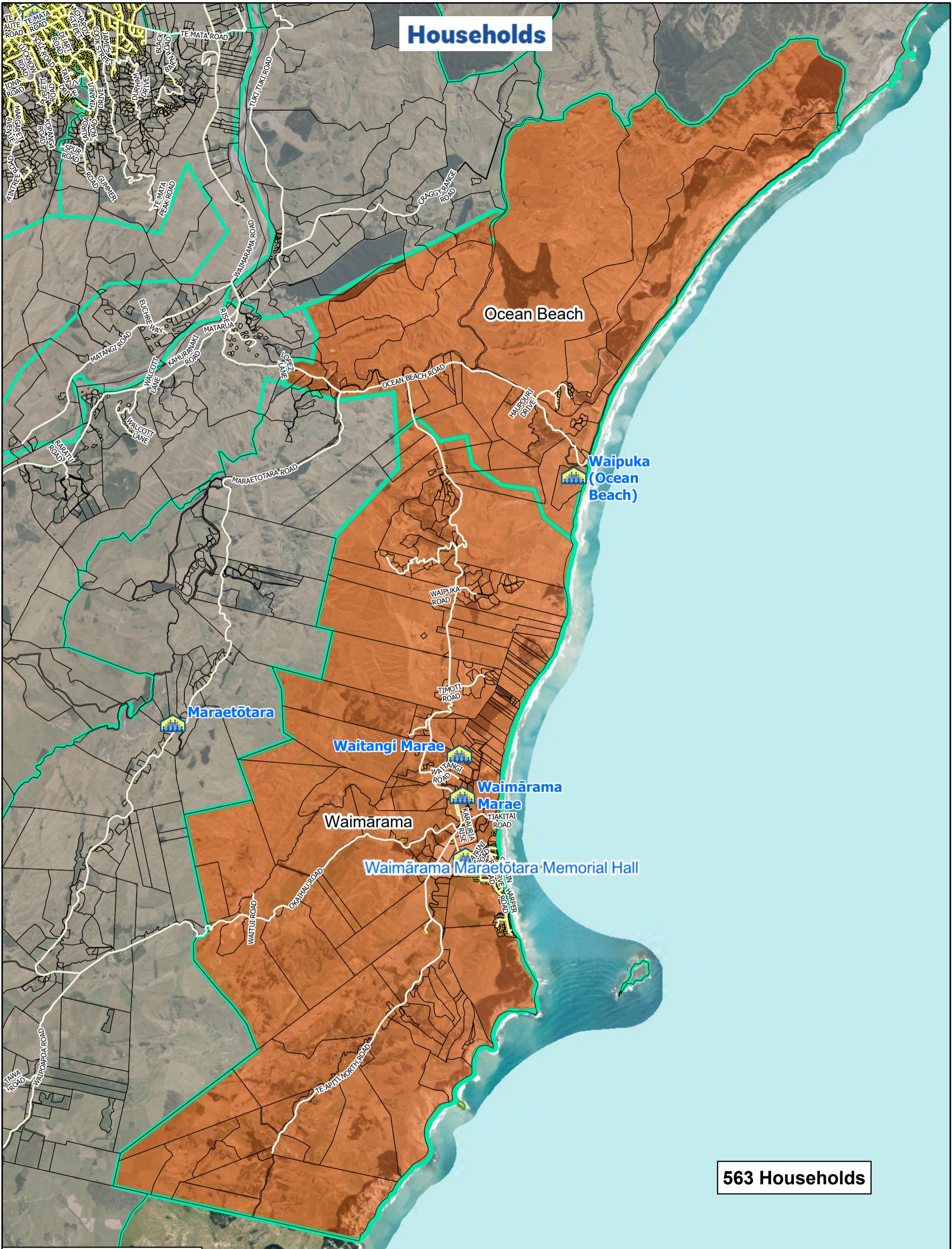
Points of Interest



Legend	
	Community Emergency Hubs
	School
	Marae
	Fire Station
	Assembly Point
	Bridge
	Campground
	Community Resilience Container
	Critical Bridge
	Culvert
	Generator
	Heli Pad
	Marae
	Store
	Surf Club
	Trailer and CD Supplies
	Water Tank
	Bridges
	Airstrips
	Alternative Routes
	Evacuation Route
	Streams/Rivers
	Roads
	Erosion
	Flooding Areas
	Landslide/Slip
	Trees and debris
	Waimārama and Ocean Beach Boundary

DISCLAIMER: The Hastings District Council cannot guarantee that the data shown on this map is 100% accurate.

Households



563 Households

Legend

- Community Emergency Hubs
- Household

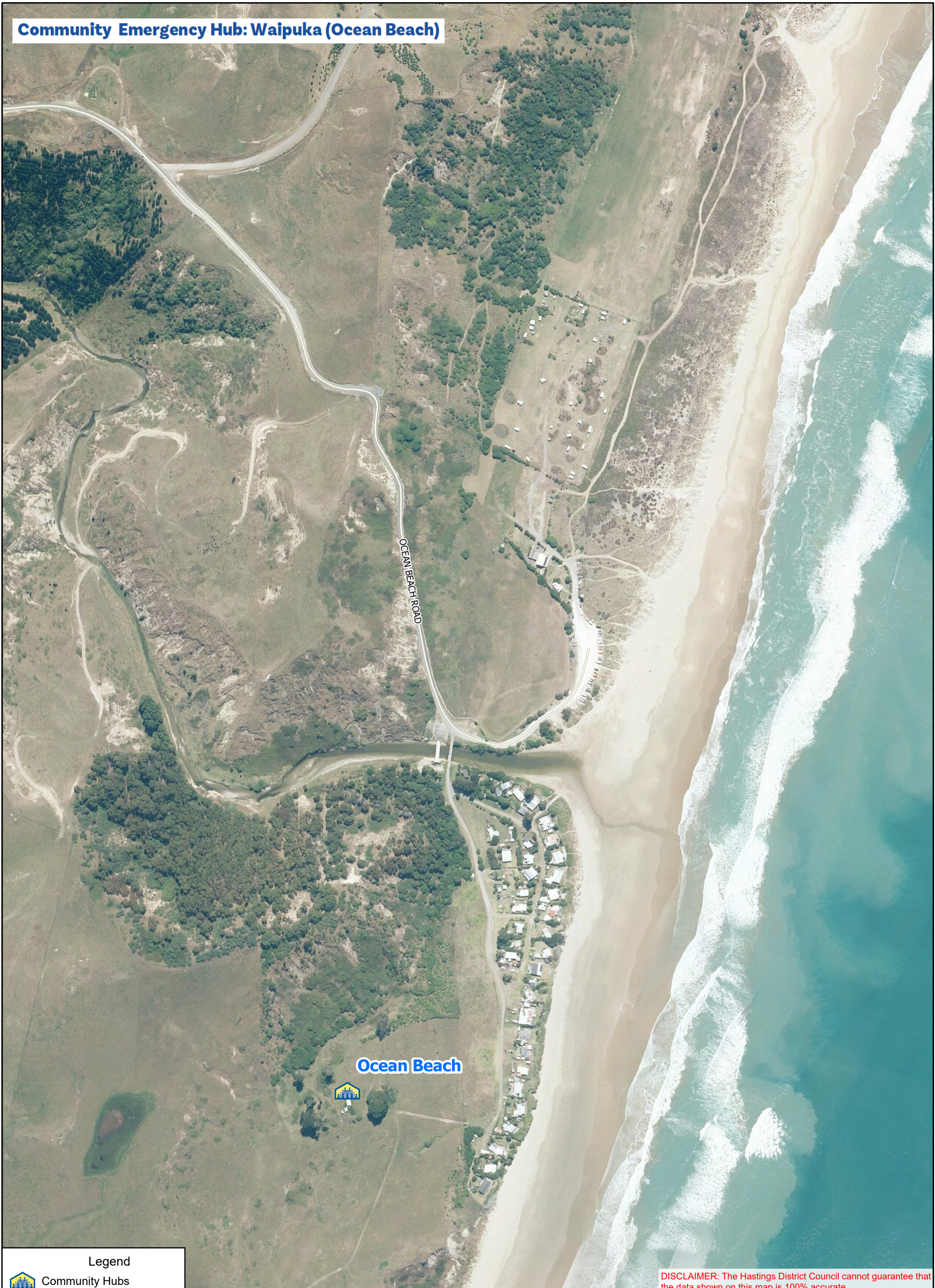
HERETAUNGA HASTINGS DISTRICT COUNCIL

Number of Households in Southern Coast Area (Waipuka/Ocean Beach, Waimārama)

0 0.8 1.5 3 Kilometers
Scale: 1:65,000
Date: Thursday, 4 September 2025
Projection: NZTM / Datum: D_NZGD_2000
Map Produced using ArcGIS Pro

DISCLAIMER: The Hastings District Council cannot guarantee that the data shown on this map is 100% accurate.

Community Emergency Hub: Waipuka (Ocean Beach)



Legend



Community Hubs

**HERETAUNGA
HASTINGS** DISTRICT COUNCIL

Community Emergency Hub: Waipuka/Ocean Beach

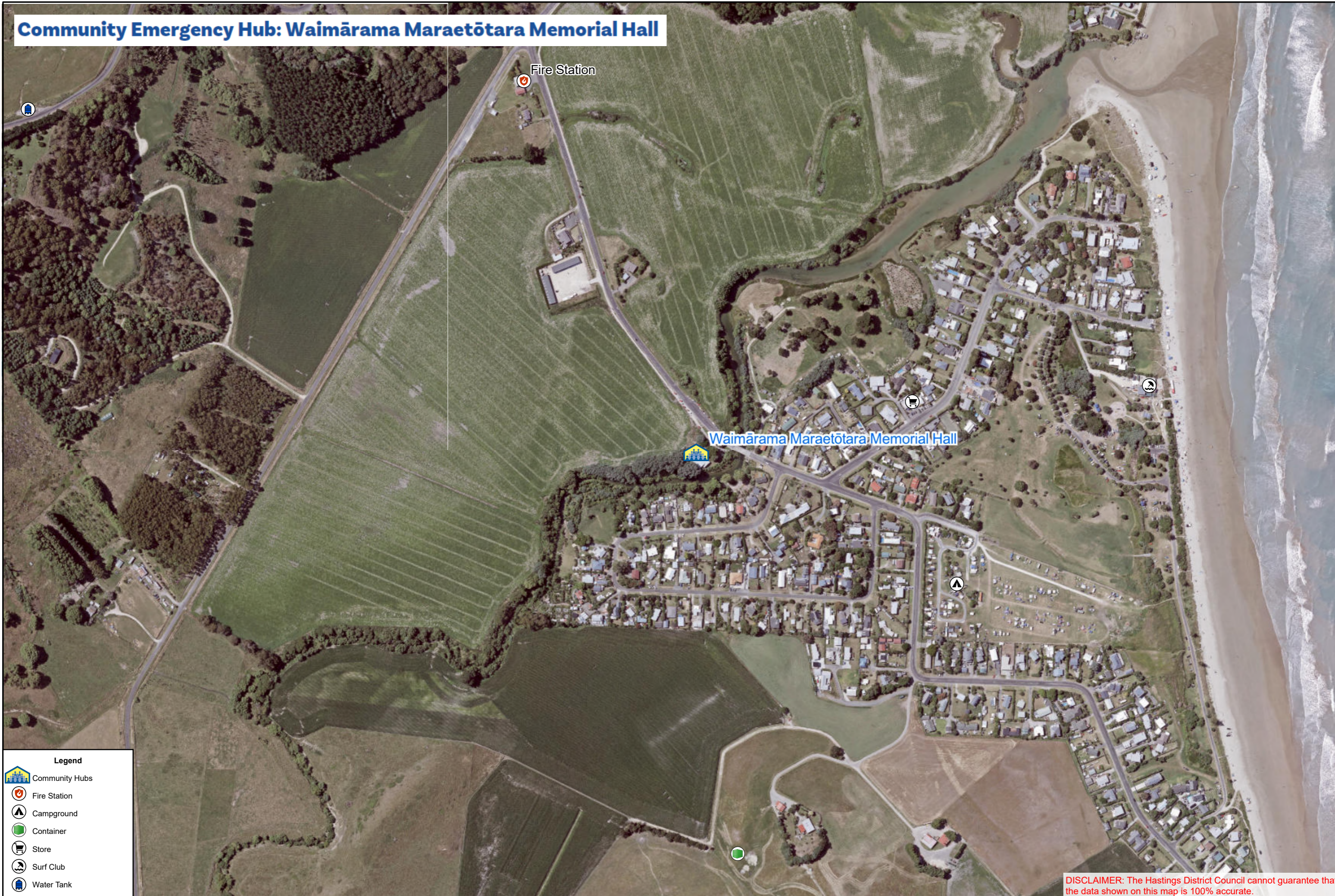


0 25 50 100
Meters
Scale: 1:3,500

Original Size: A3
Date: Monday, 25 November 2024
Projection: NZTM / Datum: D_NZGD_2000
Map Produced using ArcGIS Pro

DISCLAIMER: The Hastings District Council cannot guarantee that the data shown on this map is 100% accurate.

Community Emergency Hub: Waimārama Maraetōtara Memorial Hall



Fire Station

Waimārama Maraetōtara Memorial Hall



- Legend**
- Community Hubs
 - Fire Station
 - Campground
 - Container
 - Store
 - Surf Club
 - Water Tank

DISCLAIMER: The Hastings District Council cannot guarantee that the data shown on this map is 100% accurate.


Community Emergency Hub: Waimārama Marae



Legend

-  Community Hubs
-  Marae

DISCLAIMER: The Hastings District Council cannot guarantee that the data shown on this map is 100% accurate.

 0 20 40 80
Meters
Scale: 1:2,000






Community Emergency Hub: Waitangi Marae



Waitangi Marae



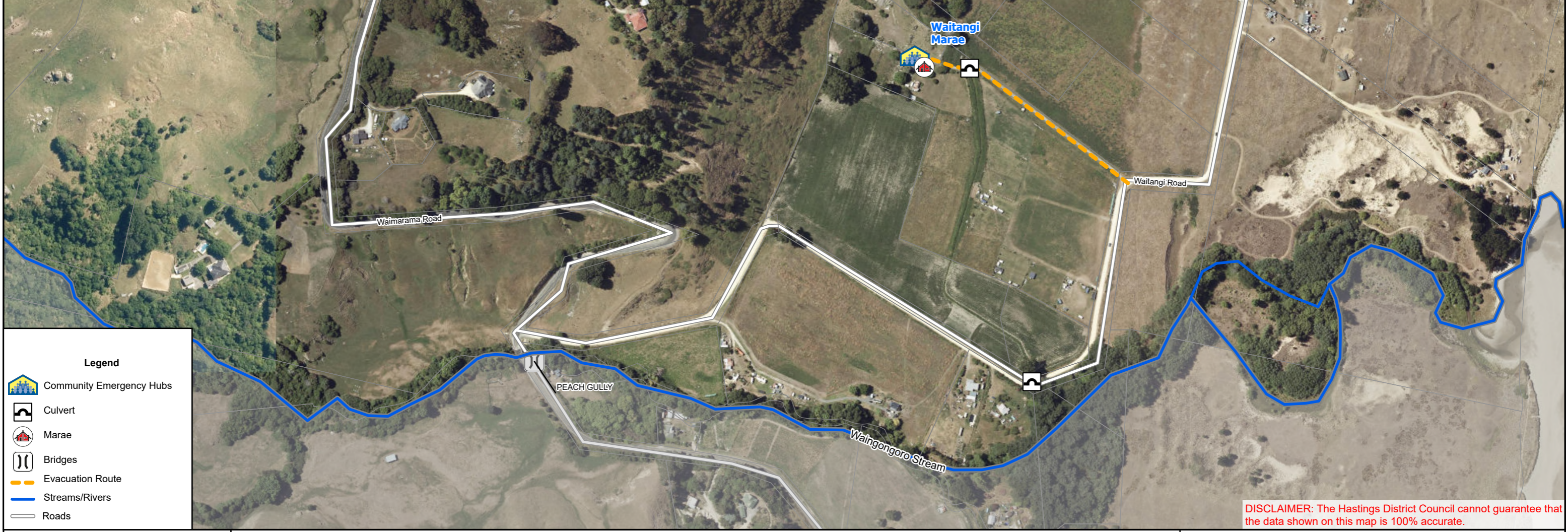
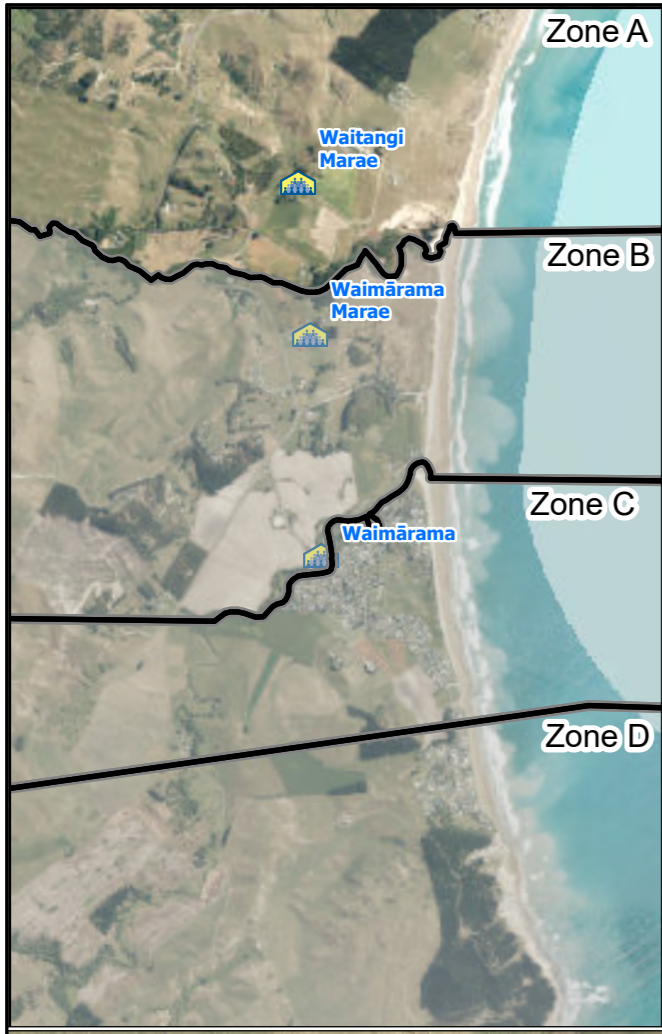
Legend

-  Community Emergency Hubs
-  Community Resilience Container
-  Evacuation Route
-  Power Lines
-  Water Tanks

DISCLAIMER: The Hastings District Council cannot guarantee that the data shown on this map is 100% accurate.



Waimārama Evacuation Zone A



Legend

- Community Emergency Hubs
- Culvert
- Marae
- Bridges
- Evacuation Route
- Streams/Rivers
- Roads

DISCLAIMER: The Hastings District Council cannot guarantee that the data shown on this map is 100% accurate.

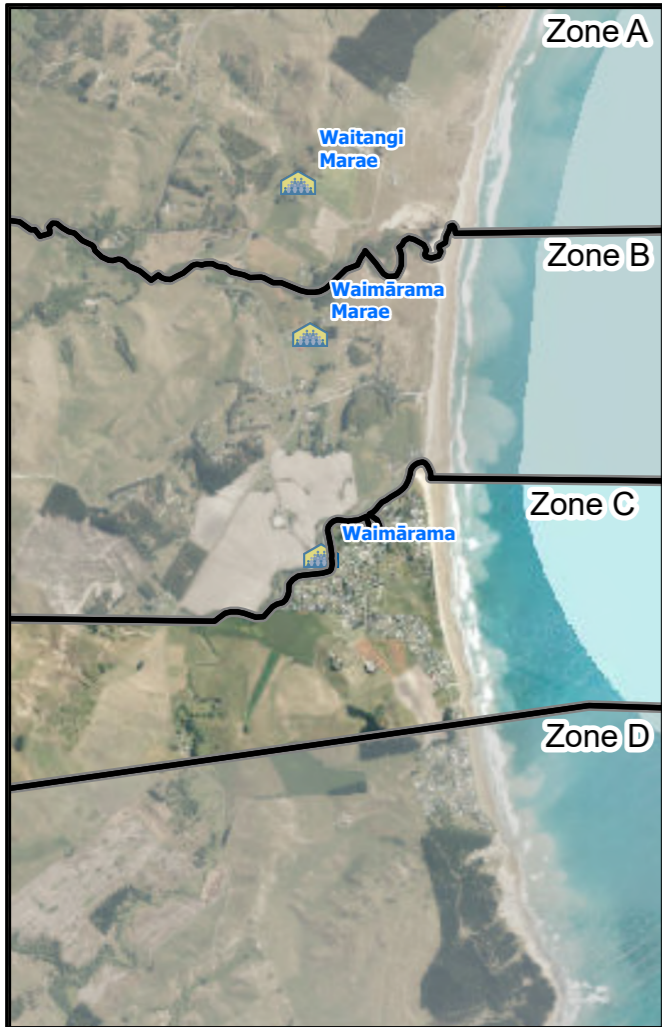
Waimārama Evacuation Zone B



Legend					
	Community Emergency Hubs		Culvert		Water Tank
	Marae		Fire Station		Bridges
	School		Generator		Evacuation Route
	Fire Station		Heli Pad		Streams/Rivers
	Assembly Point		Marae		Topping Airstrips
	Campground		Store		Airstrips
	Community Resilience Container		Surf Club		Roads
	Critical Bridge		Trailer and CD Supplies		

DISCLAIMER: The Hastings District Council cannot guarantee that the data shown on this map is 100% accurate.

Waimārama Evacuation Zone C

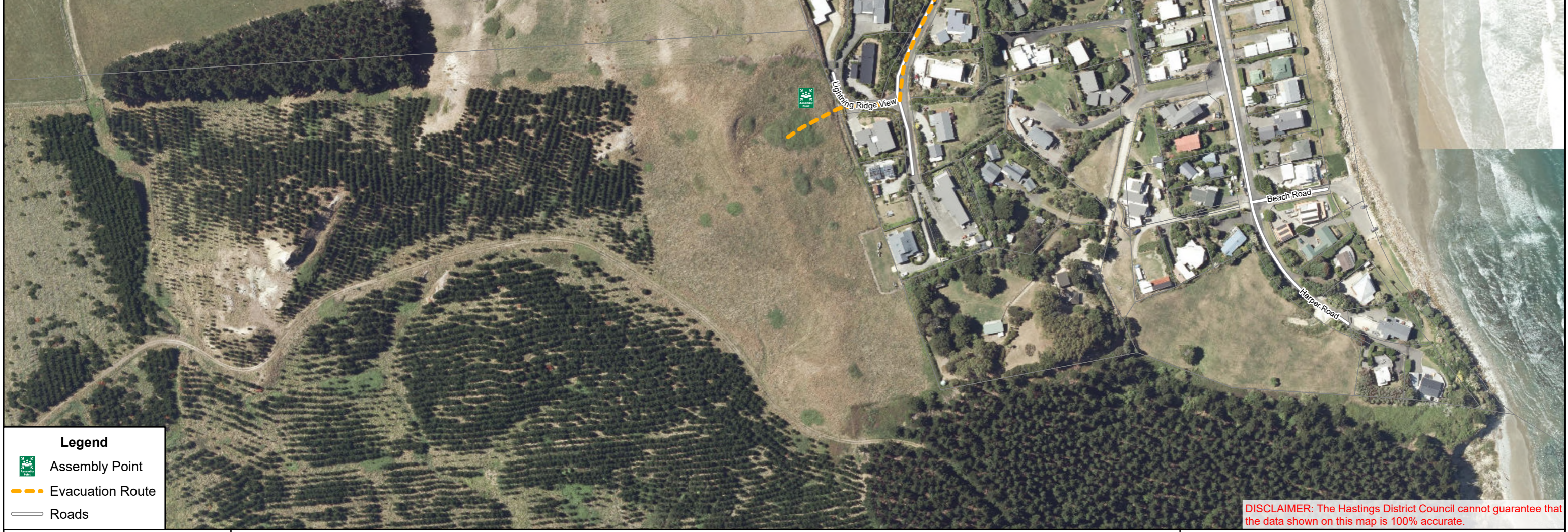


Legend

	Community Emergency Hubs		Heli Pad
	Assembly Point		Store
	Campground		Surf Club
	Community Resilience Container		Bridges
	Critical Bridge		Evacuation Route
	Culvert		Streams/Rivers
			Roads

DISCLAIMER: The Hastings District Council cannot guarantee that the data shown on this map is 100% accurate.

Waimārama Evacuation Zone D



Legend

- Assembly Point
- Evacuation Route
- Roads

DISCLAIMER: The Hastings District Council cannot guarantee that the data shown on this map is 100% accurate.