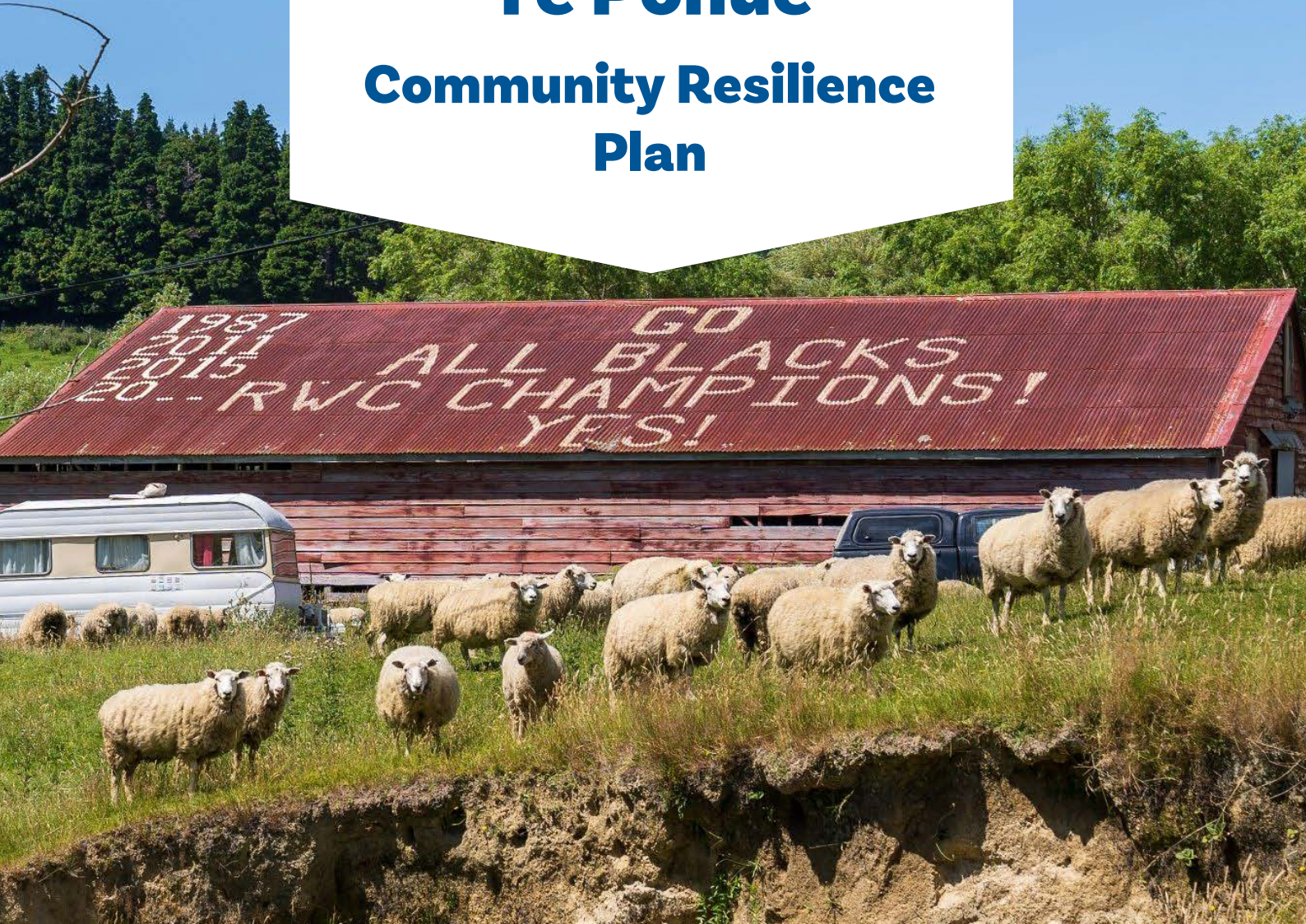




HE MAHERE OHOTATA MŌ
TE HAPORI

Te Pohue

Community Resilience Plan



**HERETAUNGA
HASTINGS** DISTRICT COUNCIL



HAWKE'S BAY
EMERGENCY MANAGEMENT

GROUP

hbemergency.govt.nz

Date: 03 November 2025 Version: 2.1 Approved By:

Emergency Management Operations Team Leader

RĀRANGI TAKE

Contents

Kupu arataki

INTRODUCTION	1
What to do during and after an emergency	4
What hazards do we have?	6
Hazard profiles & maps	9
Strengths & vulnerabilities	10
Community resources & capability	11
Potential impacts & responses	13
Resilience tools	14
In an emergency you will need	16
Appendices & resources	17

KUPU ARATAKI

INTRODUCTION

The purpose of this Community Resilience Plan is to help our community to ensure measures are in place to help us look after each other before, during, and after an emergency.

This writing and information within this plan comes from our community.



Description of our community

Te Pohue is a small rural settlement located along State Highway 5 in inland Hawke's Bay, serving as a gateway between the coastal plains and the central North Island's rugged interior. Perched in the foothills of the Kaweka Ranges, the area is defined by its elevated terrain, native bush remnants, and sweeping views across the surrounding hill country.

Historically, Te Pohue has been a service point for travellers and a base for farming operations, particularly sheep and beef grazing on the surrounding hill country. The community has long been shaped by its strategic location on the Napier-Taupo Road, with a local school, hall, and marae forming the heart of this tight-knit rural hub.

The broader Te Pohue area includes farmland and forestry blocks stretching north toward the Mohaka River and south toward Glengarry and the upper Esk Valley. The landscape is a mix of steep hill country, regenerating native bush, and pine plantations, reflecting both traditional land uses and more recent forestry development.

Te Pohue's location also places it at the intersection of natural beauty and environmental risk. The area has experienced the impacts of severe weather events, including slips, road closures, and isolation during storms such as Cyclone Gabrielle in 2023. These events have highlighted the community's resilience and the importance of maintaining strong local networks and emergency preparedness in a remote, high-country setting.

He waka eke noa
We are all working together

This community includes the following areas:

- South of Mohaka River Bridge on SH5 (but not limited to, pending Mohaka Bridge accessibility).
- All Ohurakura Road - Te Waka Road - Old Taupo Coach Road.
- SH 5 north of Glengarry Road.
- East of the Mangaone River.
- West of the Esk River including Waitara Road & turn off to Pohurakura Road to 100 Acre Road (Ngatapa Station).

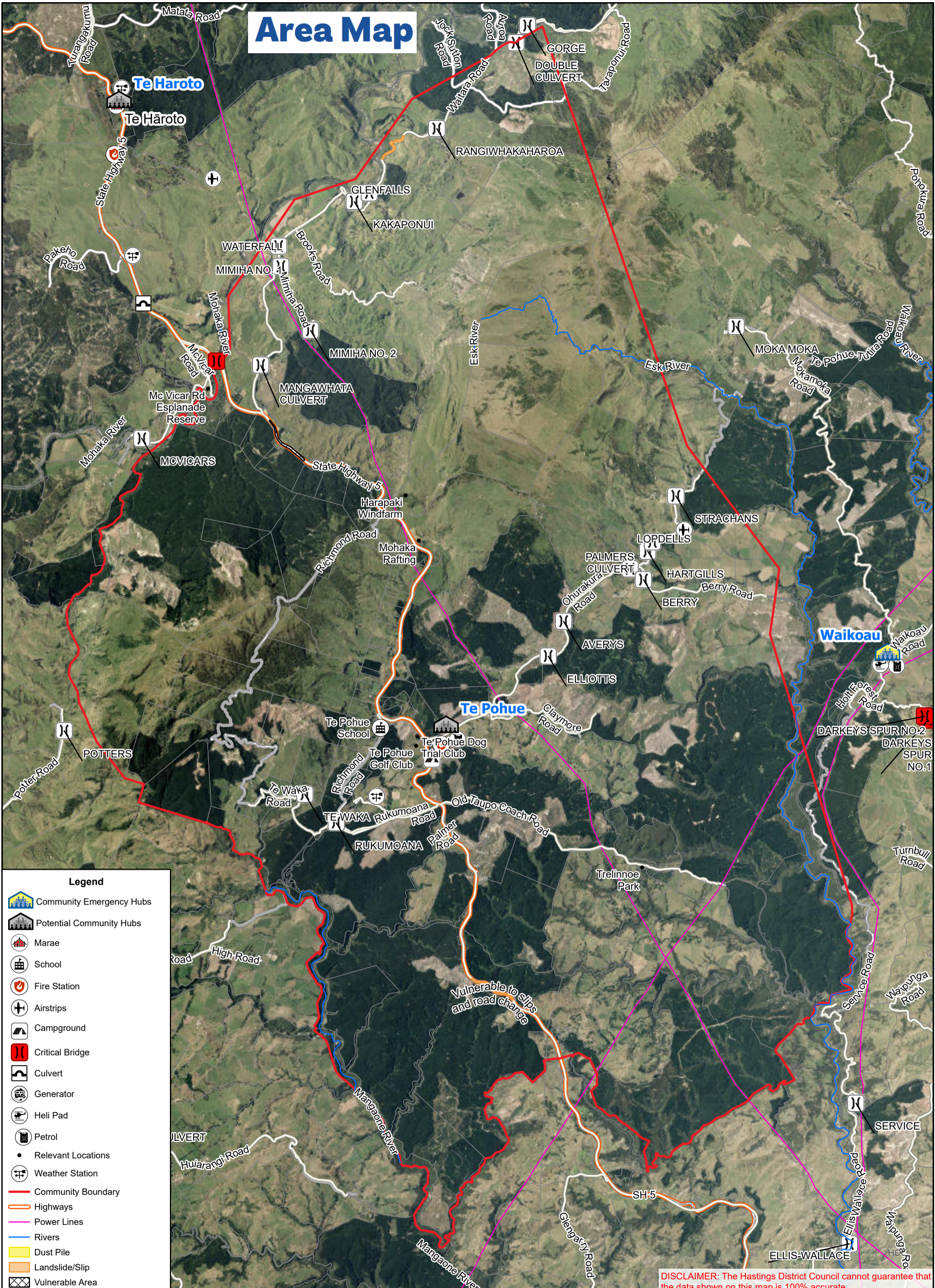
Plan Principles:

This plan is based on the following key principles:

- Life safety is paramount, and all actions should aim to achieve this outcome.
- The community is prepared to:
 - Self-evacuate as early as possible, or
 - Be self-sufficient for at least 14 days.
- Community support will be coordinated through the Te Pohue Community Emergency Hub at the Te Pohue Community Hall, 53 Ohurakura Road, Te Pohue.

He waka eke noa
We are all working together

Area Map



Legend

- Community Emergency Hubs
- Potential Community Hubs
- Marae
- School
- Fire Station
- Airstrips
- Campground
- Critical Bridge
- Culvert
- Generator
- Heli Pad
- Petrol
- Relevant Locations
- Weather Station
- Community Boundary
- Highways
- Power Lines
- Rivers
- Dust Pile
- Landslide/Slip
- Vulnerable Area

Vulnerable to slips and road change

DISCLAIMER: The Hastings District Council cannot guarantee that the data shown on this map is 100% accurate.



I TE WĀ O TE OHOTATA

WHAT TO DO DURING AND AFTER AN EMERGENCY



STEP 1

Try to stay calm, check yourself and others in your household for injuries, for minor injuries provide first aid, then assess your home for damage.

Is everything ok?

NO



STEP 2

If you or anyone in your household have significant injuries call **111 immediately**.
If your home is not safe, **evacuate immediately and call 111**.

YES



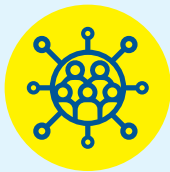
STEP 3

Check on your immediate neighbours. Assess your surroundings for damage, check on your street & neighbourhood.

If safe to proceed go to STEP 4



A place for your community to gather and help each other out during an emergency.



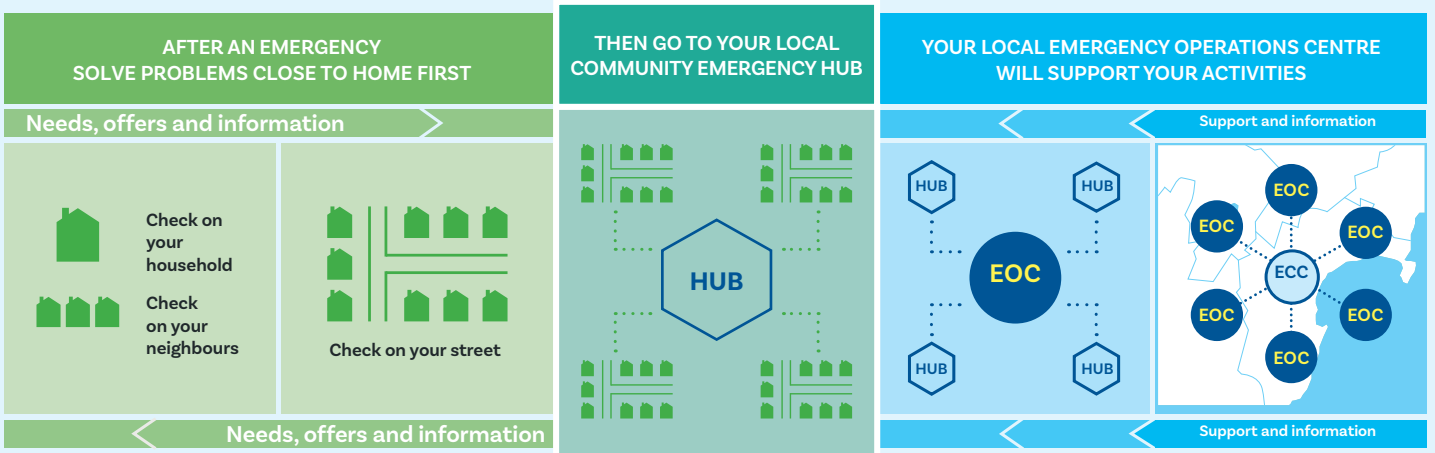
STEP 4

Go to your local Community Emergency Hub.

The Hub is a designated place where your community can gather, connect with one another, and solve problems using the skills and resources which already exist among your community.

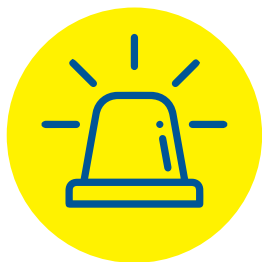
Community Emergency Hubs are a place for people to work together to solve problems locally while still coordinating with councils about big problems.

See page 21 for a map of your local Hub location.






During an emergency, councils will stand up an Emergency Operations Centre (EOC) to respond. The EOC will give support and information back into the community, and give information to the regional Emergency Coordination Centre (ECC).




WHAT HAZARDS DO WE HAVE?





Below is a list of the Hazards that could cause an emergency in our community. More information on these hazards, and what you can do before, during and after an emergency, can be found on the HB Emergency Website (www.hbemergency.govt.nz).

These hazards, perceived likelihood and impact, warning type, and immediate actions were decided with the community.

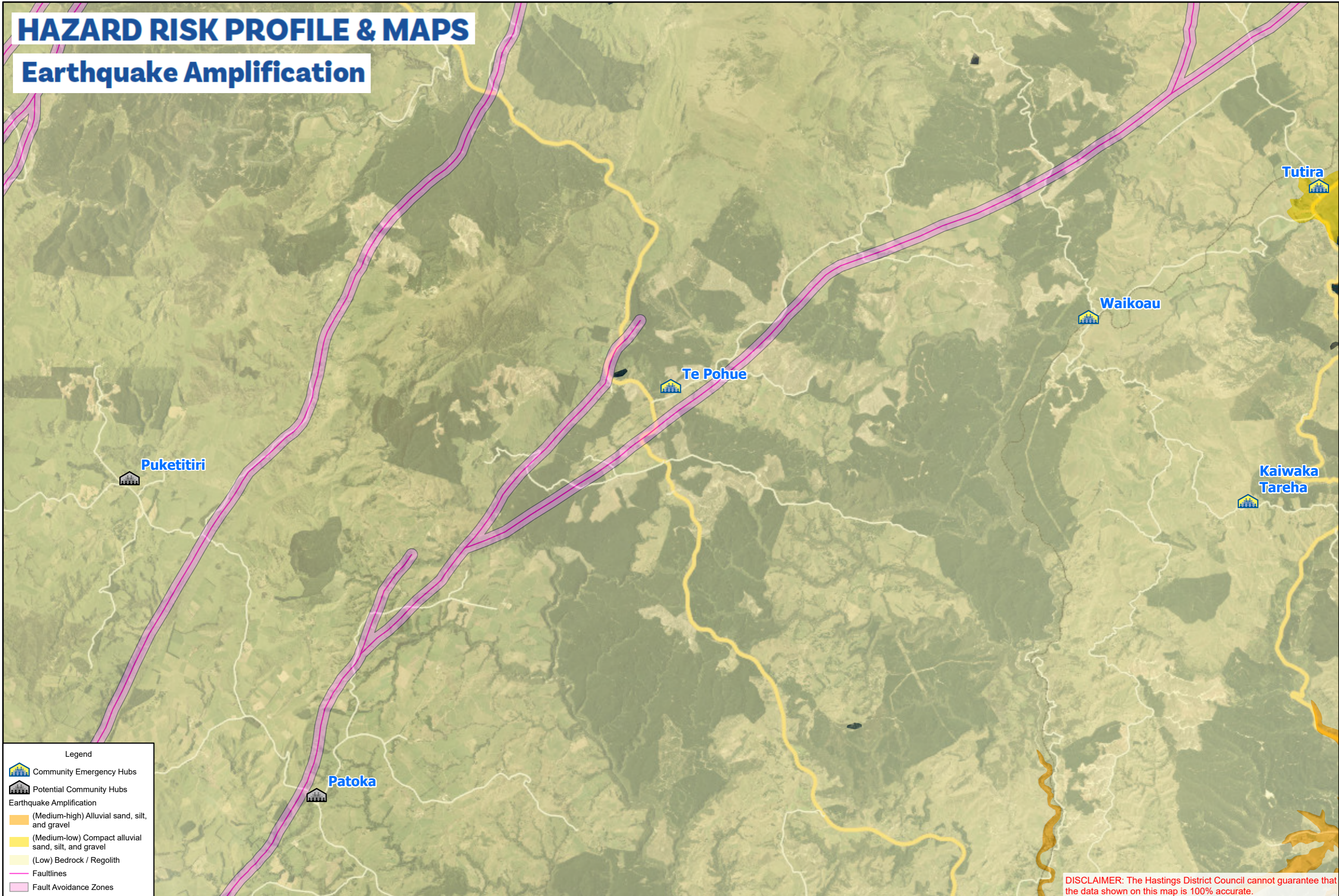
HAZARD (perceived likelihood & impact)	WARNING & ACTIONS	IMPACTS
 <p>1. Critical Infrastructure Failure (roads, bridges & power)</p>	<p>Warning - Unplanned loss of service. Hawke's Bay Emergency Management Office (HB EMO), HDC, HBRC, NZTA and Unison websites, and social media.</p> <p>Actions:</p> <ul style="list-style-type: none"> • Shelter in place. • Check on neighbours and friends in the area. 	<ul style="list-style-type: none"> • Isolation and restrictions to the areas people can access. • Inability to self-supply necessary resources. • May cause distress or impact on access to health services for people.
 <p>2. Storm, Flood, and Severe Weather</p>	<p>Warning - MetService warning. Information disseminated by HB EMO and HDC.</p> <p>Actions:</p> <ul style="list-style-type: none"> • Self-evacuate to high ground if you see floodwater rising. • Do not wait for an official warning. • Preferably stay with friends or family out of the hazardous area. 	<ul style="list-style-type: none"> • Flooding and landslides. • Damage from high wind or floodwaters. • Loss of electricity. • Evacuation of flood zones. • Isolated communities.
 <p>3. Earthquake / Liquefaction</p>	<p>Warning - Earthquakes are rapid onset events and occur without warning.</p> <p>Actions:</p> <ul style="list-style-type: none"> • Drop, Cover, Hold, including during aftershocks. 	<ul style="list-style-type: none"> • Damage to buildings, roads and bridges. • Loss of water, electricity, and communication. • Isolation and cut off communities. • Influx of evacuees from coastal areas if tsunami is threatened or occurs.

HAZARD (perceived likelihood & impact)	WARNING & ACTIONS	IMPACTS
 <p>4. Wildfire (Forestry or Grass)</p>	<p>Warning - Natural (Smoke). FENZ warning.</p> <p>Actions:</p> <ul style="list-style-type: none"> • Evacuate to an unaffected area. • Preferably stay with friends or family out of the hazardous area. 	<ul style="list-style-type: none"> • Damage to buildings. • Restrictions to the areas people can access. • Impact on infrastructure, services, and commercial actions. • Health impacts on people and animals. • Contamination of rainwater supplies.
 <p>5. Landslide</p>	<p>Warning - Landslides can happen without warning but may be triggered by other hazards.</p> <p>Actions:</p> <ul style="list-style-type: none"> • Evacuate to an unaffected area. • Preferably stay with friends or family out of the hazardous area. 	<ul style="list-style-type: none"> • Blocked access to roads and properties. • Damaged critical infrastructure. • Further landslides may occur.
 <p>6. Drought / Heatwave</p>	<p>Warning - Notification (MPI), MetService.</p> <p>Actions:</p> <ul style="list-style-type: none"> • Take note of information and assistance provided by MPI, HDC and Industry organisations. • Contact Rural Support Trust. • Monitor stock feed supplies. • Consider financial implications, talk to your bank. • Drink plenty of water, provide water freely for animals. • High fire risk - do not do any activity which could create sparks or flames. 	<ul style="list-style-type: none"> • Stock losses, destocking, animal welfare concerns. • Wildlife impacts. • Vegetation die-off. • Increased fire risk. • Economic impacts. • Babies, elderly, physical workers, pregnant people, and those with serious or long-term illness are particularly vulnerable to heat stroke potentially a life-threatening emergency.

HAZARD (perceived likelihood & impact)	WARNING & ACTIONS	IMPACTS
 <p>7. Volcanic Ashfall</p>	<p>Warning - warning through GeoNet, HB EMO, and HDC.</p> <p>Actions:</p> <ul style="list-style-type: none"> • Shelter in place. • Disconnect downpipes to tank water. • Seal windows and doors. • DO NOT use vehicles or machinery until ashfall stops. 	<ul style="list-style-type: none"> • Damage to crops and pasture. • Health impacts and difficulty breathing if ash is inhaled. • Disruption to electricity, communications, and services. • Damage to vehicles, routes, and houses. • Contamination of water supplies (rainwater collection, surface water and groundwater).
 <p>8. Biosecurity (animal & plant diseases/pests)</p>	<p>Warning - National notification (MPI), HBRC.</p> <p>Actions:</p> <ul style="list-style-type: none"> • Surveillance programmes for pests and diseases to contain the outbreak. 	<ul style="list-style-type: none"> • Impacts to native/indigenous species. • Impacts on agricultural businesses and communities.

HAZARD RISK PROFILE & MAPS

Earthquake Amplification



DISCLAIMER: The Hastings District Council cannot guarantee that the data shown on this map is 100% accurate.

VULNERABILITIES & VALUED STRENGTHS

	VULNERABILITIES	STRENGTHS
Social / Cultural	<ul style="list-style-type: none"> ○ Vulnerable people (medical needs, disabilities, elderly, living alone, etc.) ○ Children boarding in Napier, Hastings, etc. ○ Dispersed population across a wide area, will make welfare checks challenging. ○ Potential for evacuees to travel to area. ○ SH5 is well used highway, may have visitors stranded during an event. 	<ul style="list-style-type: none"> ○ Skills in the community, including: <ul style="list-style-type: none"> ● Trades (Builders, Electricians, Plumbers, etc) ● Farmers ● Teachers ● Contractors ● Medical Professionals (Doctors, Nurses, Therapists, ICU nurse) ● Hunters ● Track maker ● Forestry workers ● Roding specialist ○ Good local knowledge, especially of roding in the area. ○ Strong community groups and community networks. ○ Dispersed population decreases risk of entire community being impacted by event. ○ Te Haroto Marae.
Built	<ul style="list-style-type: none"> ○ Mains power likely to be disrupted. ○ Roding network exposed to flooding, slips and dropouts. ○ Limited cell phone coverage. ○ High tension energy pylons through area. ○ No wastewater system. Reliant on septic tanks. ○ Bridges key connection points for community, vulnerable to earthquakes. ○ Reticulated water supply to main residential area. 	<ul style="list-style-type: none"> ○ FENZ engines with trained volunteers. ○ Resilience supplies at 22 Ohurakura Road. ○ Farm tracks can be used if roding infrastructure disrupted. ○ Rainwater supplies. ○ Fuel storage/station at camp. ○ Many homes have solar power. ○ Helipad & Airstrips in area.

VULNERABILITIES & VALUED STRENGTHS

	VULNERABILITIES	STRENGTHS
Economic	<ul style="list-style-type: none"> ○ Community members commute to Napier / Hastings for work - if access is disrupted, so potentially is income. ○ Local businesses rely on the roading network for export and import of goods, services and customers. 	<ul style="list-style-type: none"> ○ Long standing forestry community with access to: <ul style="list-style-type: none"> ● Tractors/machinery ● Motor & quad bikes ● Digging equipment ● Chainsaws ○ Starlink in numerous homes. ○ Supplies in Community Resilience Supplies container. ○ BBQ at hub, and throughout area. ○ High proportion of generators in area.
Natural	<ul style="list-style-type: none"> ○ Range divides community. ○ Slips probable during earthquakes and heavy rain events. ○ Heavily wooded areas providing fuel for fires during dry months. ○ Landslide risk on hillsides and cliffs. 	<ul style="list-style-type: none"> ○ High ground. ○ Rivers for water supply.

COMMUNITY RESOURCES



Our community is the best source of resources to help each other.

What are the items, skills, people, and places we can identify within our community to use?

RESOURCES & CAPABILITY	
Places & Spaces	<ul style="list-style-type: none"> • Te Pōhue Community Hall as a Community Emergency Hub, 53 Ohurakura Road, Te Pōhue [GPS coordinates - 39°15'12.6"S, 176°42'01.2"E] • Te Pōhue School, 44 Richmond Road. • FENZ station, 22 Ohurakura Road • Te Haroto Marae, 4865 SH5 • Te Pōhue golf club • Time Out at Titokura (accommodation)
Infrastructure	<ul style="list-style-type: none"> • People with Starlink • Meridian Windfarm • FENZ equipment at FENZ station • Fuel available at Te Pōhue camp
Networks & Groups of People	<ul style="list-style-type: none"> • FENZ volunteers • School parents/teachers • Golf club members • Dog trial members • Hall committee • Marae • Forestry workers • Meridian workers • Mohaka Rafting
Services in our Community	<ul style="list-style-type: none"> • Builders, Plumbers, Electricians, Farmers, Track Makers, Forestry workers, Engineers, First Aiders • Local medical people (Nurses) • Access to heavy machinery & supplies from local forestry operations/ Windfarm • Mohaka Rafting <div style="display: flex; justify-content: space-between;"> <div style="width: 48%;"> <p>AED locations:</p> <ul style="list-style-type: none"> • Te Pōhue School, 44 Richmond Road • FENZ station, 22 Ohurakura Road • Te Pōhue Hall, 53 Ohurakura Road • Te Haroto Marae, 4865 SH5 <p>Starlink/Wireless Internet:</p> <ul style="list-style-type: none"> • Multiple privately owned modems. </div> <div style="width: 48%;"> <p>First Aid Kits:</p> <ul style="list-style-type: none"> • FENZ station, 22 Ohurakura Road • Te Pōhue Hall, 53 Ohurakura Road • Te Pōhue School, 44 Richmond Road <p>Generators</p> <ul style="list-style-type: none"> • Te Pōhue Hall, 53 Ohurakura Road • Many privately owned generators </div> </div>

POTENTIAL IMPACTS & RESPONSES

IMPACT	HAZARD	RESPONSES
Need to evacuate	Tsunami, Storm/Flood, Fire, Volcanic Ash, Landslide	<ul style="list-style-type: none"> • Grab bags prepared. • House, building & container security. • Community Emergency Hub location with communications and basic supplies. • Te Pōhue campground • Te Pōhue golf club • Te Haroto Marae
Stuck at home	Earthquake, Storm/Flood, Volcanic Ash, Pandemic, Landslide	<ul style="list-style-type: none"> • Households have additional food, water & medication supplies. Consider a generator, solar and/or batteries. • Community Emergency Hub with communications. • Backup power available at Te Pōhue camp.
Can't get home	Earthquake, Tsunami, Storm/Flood, Fire, Volcanic Ash, Landslide	<ul style="list-style-type: none"> • Pre-arranged plans including meeting points. • Communication through Community Emergency Hub network if required. • Stay with friends or family who are accessible, if available, or go to a Civil Defence Centre, if open.
Injuries/ medical needs	All	<ul style="list-style-type: none"> • Households with trained first aiders and first aid supplies. • Community Emergency Hub first aid kit. • First aid kits throughout area. • List of medical professionals.
No water	Earthquake, Tsunami, Storm/Flood, Fire, Volcanic Ash, Critical Infrastructure Failure	<ul style="list-style-type: none"> • Household water tanks. • Household stores of bottled water. • River water (requires boiling).
No electricity	Earthquake, Tsunami, Storm/Flood, Fire, Landslide	<ul style="list-style-type: none"> • Household generators. • Large generator to power camp if needed.
No communications (phone or internet)	Earthquake, Tsunami, Storm/Flood, Fire, Volcanic Ash	<ul style="list-style-type: none"> • Private Starlinks – residents might be prepared to share access with other locals. • Community Emergency Hub VHF radio. • FENZ radios. • Radiotelephones (RTs).
Loss of road access	Earthquake, Tsunami, Storm/Flood, Fire, Volcanic Ash, Landslide	<ul style="list-style-type: none"> • Alternative access routes on forestry roads. • Community resource supplies. • Personal resource supplies for 2 weeks. • Farm machinery available to restore road access.

RESILIENCE TOOLS

TOOLS		STATUS
1.	Personal preparedness enablers: Household Plan and Grab & Go Bag.	In Progress
2.	Community resilience - hub training, including lanyards roles.	Completed
3.	School newsletter (The Tattle)	On going
4.	Social media: Te Pohue Community Facebook Group	On going
5.	Community get togethers at Te Pohue Hall	On going
6.	Regular hub co-ordinator get togethers.	On going

STAY?

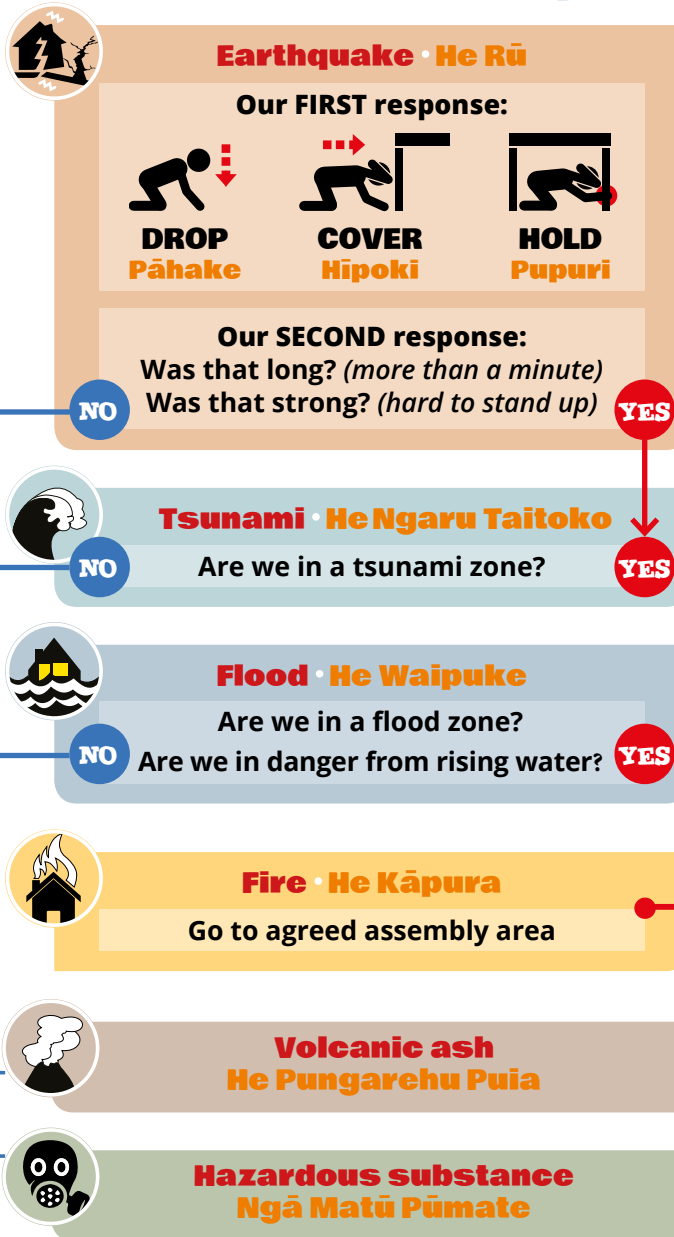
ME NOHO?

SHELTER IN PLACE

Me Noho Ki Taua Wāhi



Our hazard decision path



OR GO?

ME HAERE RĀNEI?



IN AN EMERGENCY YOU WILL NEED:



AN EMERGENCY PLAN

Make a plan for your household, whanau and pets to get through an emergency, consider

- Where will you meet or evacuate to?
 - How will you look after each other??
 - Who might need our help?
 - Who will we need to contact?
 - What will we do if we are stuck at home?
 - What will we do if we have no power, no water, no way to get information?
-



EMERGENCY SUPPLIES

You don't have to have them all in one place, but you might have to find them in a hurry and/or in the dark, store:

- Three litres of water per person per day.
 - First aid kit.
 - Long-lasting food that doesn't need cooking, or a way to safely cook or heat food without electricity, and extra fuel.
 - Consider also specific food needs of babies, children and pets.
 - Torch.
 - Emergency cash.
 - Half a tank of fuel in your vehicle.
 - Toilet paper and large plastic buckets for an emergency toilet.
 - Work gloves and a properly fitted mask.
-



EMERGENCY GRAB BAG

Pack your emergency grab bag with basic supplies including:

- Walking shoes, warm clothes, raincoat, and hat.
 - Water and snack food (remember babies and pets too).
 - Hand sanitiser & face mask.
 - Portable phone charger.
 - Cash.
 - Copies of important documents and Photo ID.
 - Medication.
 - Small first aid kit.
-

Remember your grab bag should be light enough that you can still carry it.

APPENDIX A: INTERNAL & EXTERNAL COMMUNICATION

Communication: Internal

The following table lists the different methods the community can use to communicate with each other:

AREA/GROUP		NEED/ISSUE	APPROACH
1.	All	Information Sharing	<ul style="list-style-type: none"> • Meetings at set times • Assemble at Fire Station • Runners, bikes and riders • River emergency radio system • Te Pōhue Community Page • School Tattle (newsletter) • Email • WhatsApp Groups • RTs
		Welfare checks on people in the community	<ul style="list-style-type: none"> • Check-in on neighbours via door-knocking wherever possible or by phone if access is impossible.

APPENDIX A: INTERNAL & EXTERNAL COMMUNICATION

Communication: Emergency Agencies

The following table lists the contact details for Emergency Agencies:

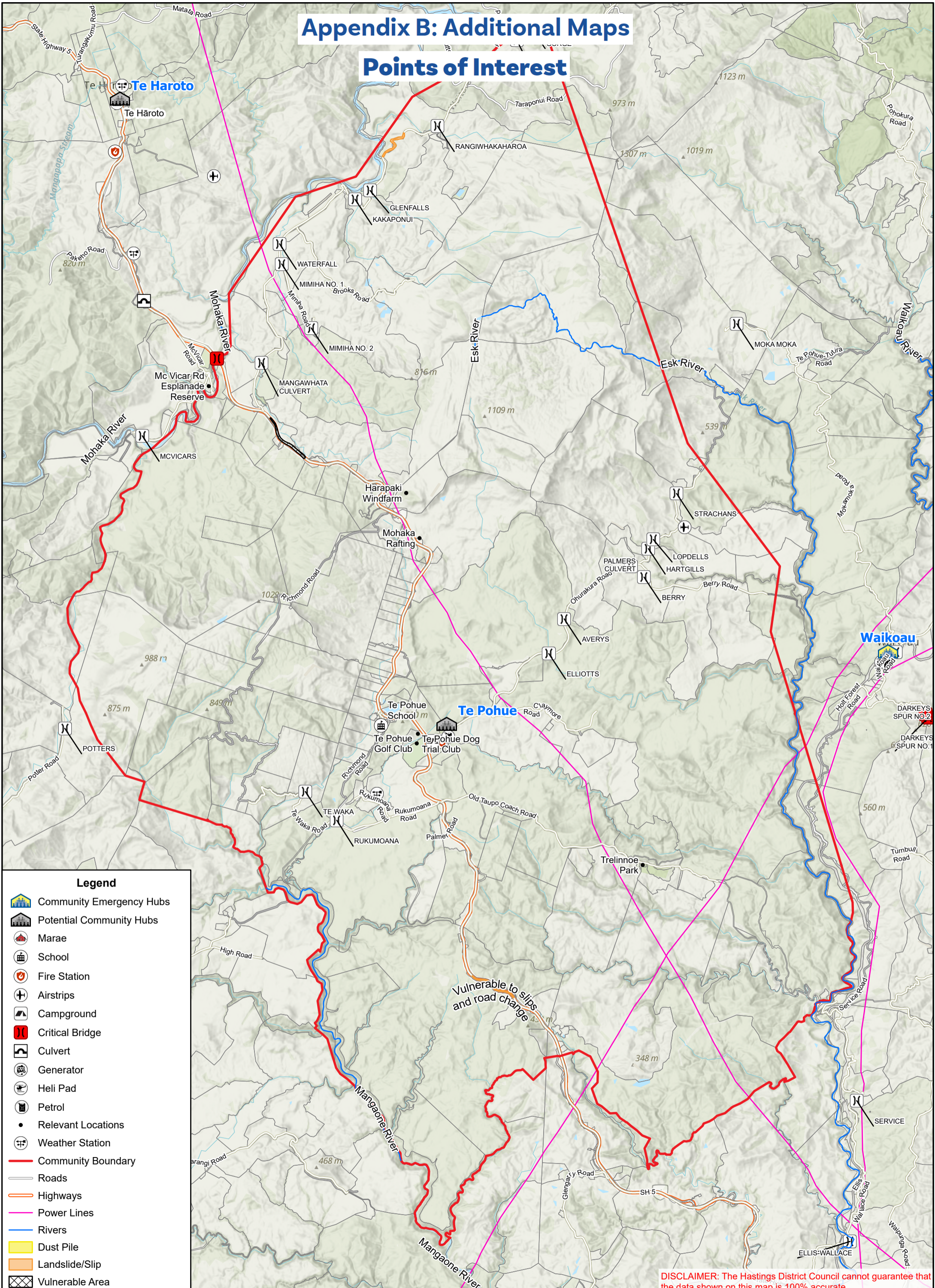
Monitor the following sources of information to stay informed:
Television | Radio [Frequencies: 90.3FM, 89.5FM, 97.5FM, 94.5FM]
Online Websites & Social Media (Official & Community Pages)

IMPORTANT: Call **111** for all urgent or emergency situations.

AGENCY	NEED/ISSUE	CONTACT/SOURCES OF INFORMATION
Police	Risk to people or property	Urgent: Call 111 OR Non-urgent: Call 105 or online
Fire & Emergency New Zealand (FENZ)	Risk to people or property	Call 111
Ambulance (St John)	Risk to people	Call 111
Hawke's Bay Emergency Management Office	Warnings, alerts, advice and key information before, during and after an emergency.	Online: https://www.hbemergency.govt.nz/ OR Facebook – HB Civil Defence Emergency Management Group.
MetService	Severe weather warnings, alerts.	Online https://www.metservice.com/warnings/home
Hastings District Council	Status of: <ul style="list-style-type: none"> local roads (i.e. not state highways) Urban water supply Urban wastewater (sewerage). Solid waste/rubbish collection and disposal. 	Call (06) 871 5000 (24/7) OR Email: customerservice@hdc.govt.nz (Monday to Friday 9am – 5pm) Facebook - Hastings District Council - Te Kaunihera ā-Rohe o Heretaunga Road status: https://www.hastingsdc.govt.nz/services/roads-and-streets/road-works
New Zealand Transport Agency (NZTA) / Waka Kotahi	Status of State Highways	Call: 0800 4 HIGHWAYS or (0800 44 44 49) Online: https://www.journeys.nzta.govt.nz/highway-conditions/ OR Facebook – NZ Transport Agency Waka Kotahi – Hawke's Bay & Gisborne
Unison Networks	Status of power supply	Call 0800 2 UNISON or 0800 2 86476 OR Online https://www.unison.co.nz/outages/
Hawke's Bay Regional Council (HBRC)	Status of: <ul style="list-style-type: none"> Rainfall. River levels and flows. Flood control and drainage. Air quality. 	Call (06) 835 9200 (24/7) OR 0800 108 838 OR Email: info@hbrc.govt.nz (Monday to Friday 8am – 5pm) OR Facebook – Hawke's Bay Regional Council

Appendix B: Additional Maps

Points of Interest



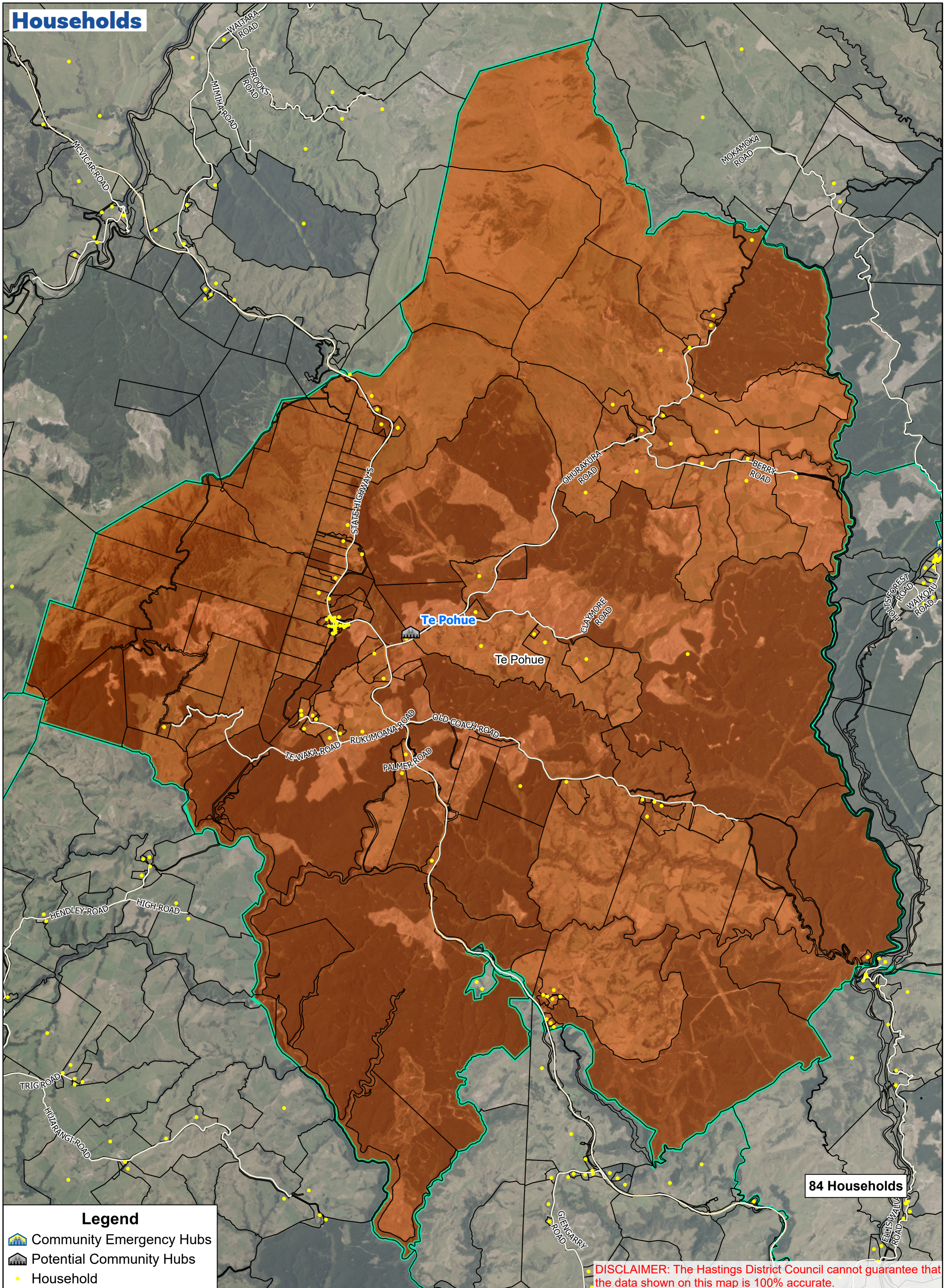
Legend

- Community Emergency Hubs
- Potential Community Hubs
- Marae
- School
- Fire Station
- Airstrips
- Campground
- Critical Bridge
- Culvert
- Generator
- Heli Pad
- Petrol
- Relevant Locations
- Weather Station
- Community Boundary
- Roads
- Highways
- Power Lines
- Rivers
- Dust Pile
- Landslide/Slip
- Vulnerable Area

DISCLAIMER: The Hastings District Council cannot guarantee that the data shown on this map is 100% accurate.



Households



Legend

- Community Emergency Hubs
- Potential Community Hubs
- Household

DISCLAIMER: The Hastings District Council cannot guarantee that the data shown on this map is 100% accurate.



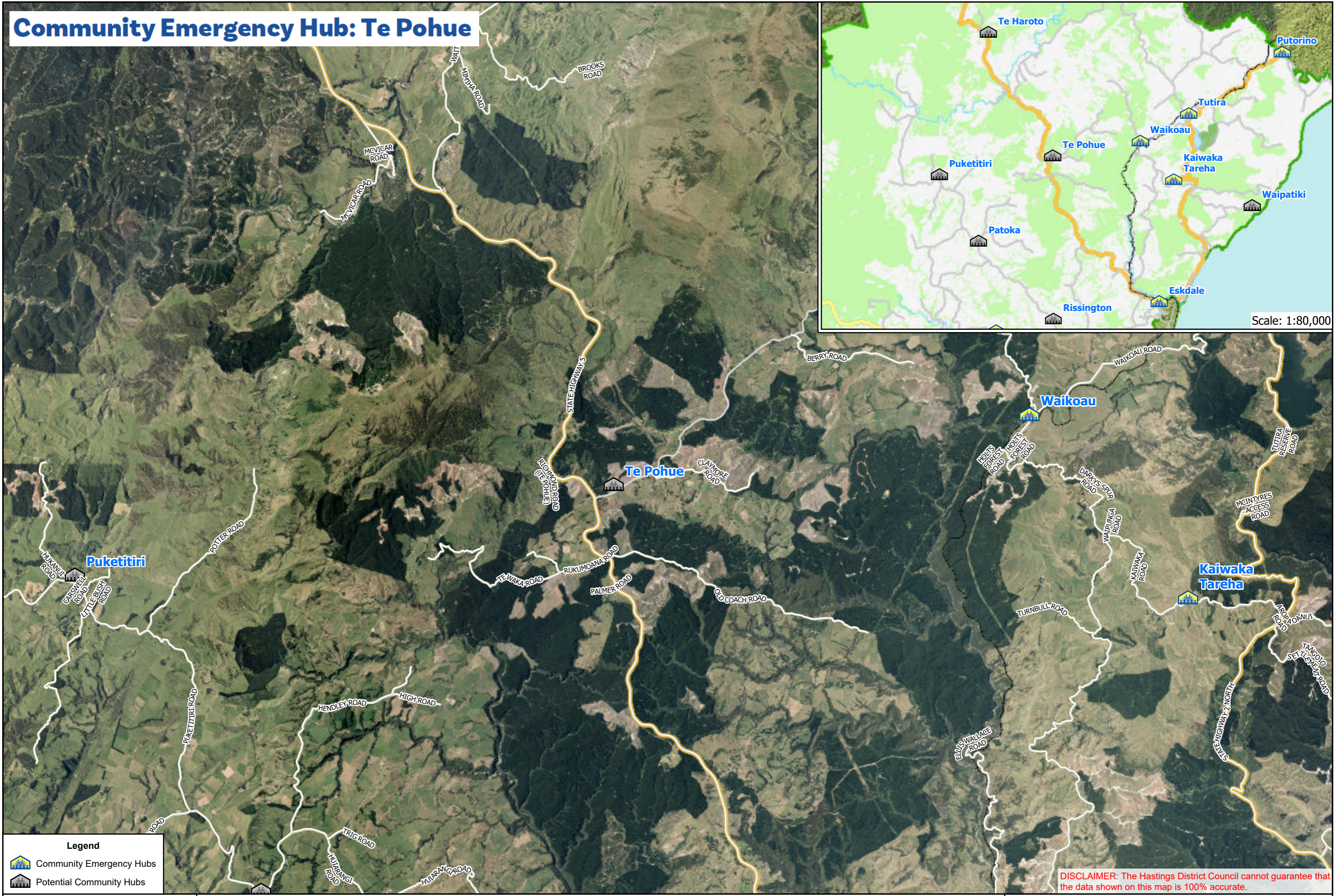
Number of Households in Te Pohue



0 0.75 1.5 3
Kilometers
Scale: 1:45,000

Original Size: A2
Date: Monday, 18 August 2025
Projection: NZTM / Datum: D_NZGD_2000
Map Produced using ArcGIS Pro

Community Emergency Hub: Te Pohue



Scale: 1:80,000

Legend

- Community Emergency Hubs
- Potential Community Hubs

DISCLAIMER: The Hastings District Council cannot guarantee that the data shown on this map is 100% accurate.



Community Emergency Hub: Te Pōhue

Original Size: A3
 Date: Monday, 22 September 2025
 Projection: NZTM / Datum: D_NZGD_2000
 Map Produced using ArcGIS Pro