



HE MAHERE OHOTATA MŌ
TE HAPORI

Twyford Raupare Community Resilience Plan



**HERETAUNGA
HASTINGS** DISTRICT COUNCIL



HAWKE'S BAY
EMERGENCY MANAGEMENT

GROUP

hbemergency.govt.nz

Date: 30/03/2026 Version: 2.1 Approved By:

Emergency Management Team Leader

RĀRANGI TAKE

Contents

Kupu arataki

INTRODUCTION	1
What to do during and after an emergency	4
What hazards do we have?	6
Hazard profiles & maps	9
Vulnerabilities & valued strengths	13
Community resources	14
Potential impacts & responses	15
Resilience tools	16
In an emergency you will need	18
Appendices & resources	19

KUPU ARATAKI

INTRODUCTION

The purpose of this Community Resilience Plan is to help our community to ensure measures are in place to help us look after each other before, during, and after an emergency.

This writing and information within this plan comes from our community.



Description of our community

Twyford / Raupare is a small rural locality nestled between Hastings and the Ngauroro River, known for its fertile soils and productive farmland.

The area is predominantly horticultural, with orchards, cropping land and vineyards forming the backbone of the local economy. Generations of families have cultivated the land here, while others have more recently settled to enjoy the peaceful lifestyle and proximity to town.

Twyford School serves as a central hub for the community, hosting events and connecting families. Older students typically travel to Hastings or Havelock North for secondary education.

While Twyford is close to urban services, its rural nature means residents are prepared to support one another in times of emergency. Strong community ties and a shared commitment to the land define life in Twyford.

He waka eke noa
We are all working together

This community includes the following areas:

- Omahu Road from SH2 to Korokipo Road.
- North of SH2 from Omahu roundabout to Ngaruroro River.
- The following roads make up the interior of Twyford: Carrick Road, Curtis Road, Evans Road, Evenden Road, Hill Road, Jarvis Road, McNab Road, Nicholl Road, Ruapare Road, Thompson Road, Trotter Road and Twyford Road. Roads connecting to these roads also fall within Twyford / Raupare.

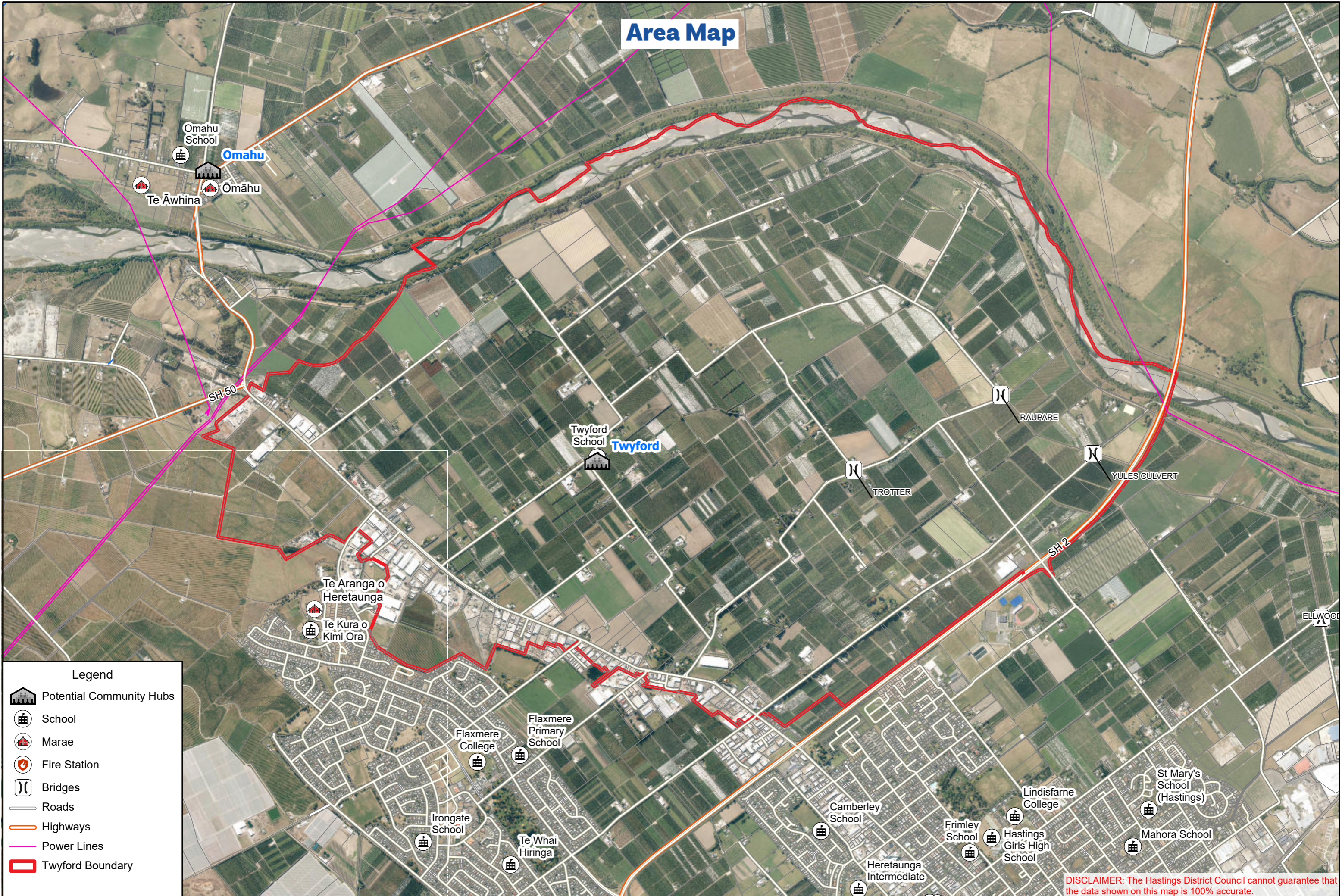
Plan Principles:

This plan is based on the following key principles:

- Life safety is paramount, and all actions should aim to achieve this outcome.
- The community is prepared to:
 - Self-evacuate as early as possible, or
 - Be self-sufficient for at least 14 days.
- Community support will be coordinated through the Twyford Raupare Memorial Recreation Centre (Twyford Hall) Community Emergency Hub.

He waka eke noa
We are all working together

Area Map



Legend

- Potential Community Hubs
- School
- Marae
- Fire Station
- Bridges
- Roads
- Highways
- Power Lines
- Twyford Boundary

DISCLAIMER: The Hastings District Council cannot guarantee that the data shown on this map is 100% accurate.

I TE WĀ O TE OHOTATA

WHAT TO DO DURING AND AFTER AN EMERGENCY



STEP 1

Try to stay calm, check yourself and others in your household for injuries, for minor injuries provide first aid, then assess your home for damage.

Is everything ok?

NO



STEP 2

If you or anyone in your household have significant injuries call **111 immediately**. If your home is not safe, **evacuate immediately and call 111**.

YES



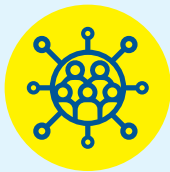
STEP 3

Check on your immediate neighbours. Assess your surroundings for damage, check on your street & neighbourhood.

If safe to proceed go to STEP 4



A place for your community to gather and help each other out during an emergency.



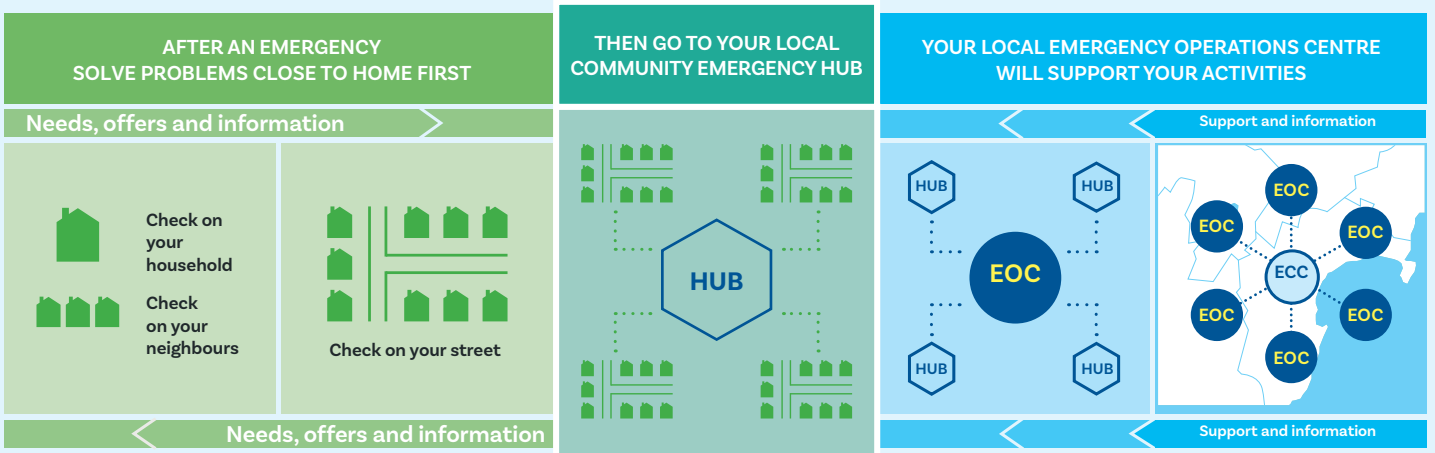
STEP 4

Go to your local Community Emergency Hub.

The Hub is a designated place where your community can gather, connect with one another, and solve problems using the skills and resources which already exist among your community.

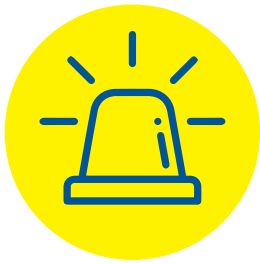
Community Emergency Hubs are a place for people to work together to solve problems locally while still coordinating with councils about big problems.

See page 23 for a map of your local Hub location.






During an emergency, councils will stand up an Emergency Operations Centre (EOC) to respond. The EOC will give support and information back into the community, and give information to the regional Emergency Coordination Centre (ECC).





WHAT HAZARDS DO WE HAVE?




Below is a list of the Hazards that could cause an emergency in our community. More information on these hazards, and what you can do before, during and after an emergency, can be found on the HB Emergency Website (www.hbemergency.govt.nz).

These Hazards, perceived likelihood and impact, warning type, and immediate actions were decided with the community.

HAZARD (perceived likelihood & impact)	WARNING & ACTIONS	IMPACTS
 <p>1. Storm, Flood, and Severe Weather</p>	<p>Warning - MetService warning. Information disseminated by Hawke's Bay Emergency Management Office (HB EMO) and council.</p> <p>Actions:</p> <ul style="list-style-type: none"> • Self-evacuate to high ground if you see floodwater rising. • Do not wait for an official warning. • Preferably stay with friends or family out of the hazardous area. 	<ul style="list-style-type: none"> • Flooding and landslides. • Damage from high wind. • Loss of electricity. • Evacuation of flood zones. • Isolated communities. • Stopbank failure.
 <p>2. Earthquake</p>	<p>Warning - Earthquakes are rapid onset events and occur without warning.</p> <p>Actions:</p> <ul style="list-style-type: none"> • Drop, Cover, Hold, including after following aftershocks. 	<ul style="list-style-type: none"> • Damage to buildings, roads and bridges. • Loss of water, electricity, and communication. • Isolation and cut off communities.
 <p>3. Critical Infrastructure Failure (roads, bridges & power)</p>	<p>Warning - Unplanned loss of service. HB EMO, HDC, HBRC, NZTA and Unison websites, and social media.</p> <p>Actions:</p> <ul style="list-style-type: none"> • Shelter in place. • Check on neighbours and friends in the area. 	<ul style="list-style-type: none"> • Restrictions to the areas people can access. • May cause distress or health issues for people

HAZARD (perceived likelihood & impact)	WARNING & ACTIONS	IMPACTS
 <p>4. Human Pandemic</p>	<p>Warning - Te Whatu Ora - Health NZ warning. Information shared by HB EMO and council.</p> <p>Actions:</p> <ul style="list-style-type: none"> • Stay home if you are unwell. • Use hygiene measures including washing hands and using masks. 	<ul style="list-style-type: none"> • Widespread illness. • Schools, businesses, and community spaces shut and/or face disruption of services.
 <p>5. Biosecurity (animal & plant diseases/pests)</p>	<p>Warning - National notification (MPI)</p> <p>Actions:</p> <ul style="list-style-type: none"> • Surveillance programmes for pests and diseases to contain the outbreak. 	<ul style="list-style-type: none"> • Impact to native/indigenous species. • Impacts on agricultural businesses and communities.
 <p>6. Drought / Heatwave / Fire</p>	<p>Warning - Natural (extended dry period, prolonged period of abnormally hot weather). MetService and/or MPI warning.</p> <p>Actions:</p> <ul style="list-style-type: none"> • Drink plenty of water, provide water freely for animals. • High fire risk - do not do any activity which could create sparks or flames. 	<ul style="list-style-type: none"> • Impact to animals, plants, and ecosystems. • Impacts on agricultural businesses and communities. • Potential health impacts. • Wildfire.
 <p>7. Volcanic Ashfall</p>	<p>Warning - Warning through GeoNet, HB EMO, and council.</p> <p>Actions:</p> <ul style="list-style-type: none"> • Shelter in place. • Disconnect downpipes to tank water. • Seal windows and doors. • DO NOT use vehicles or machinery until ashfall stops. 	<ul style="list-style-type: none"> • Damage to crops. • Health impacts and difficulty breathing if ash is inhaled. • Disruption to electricity, communications, and services. • Damage to vehicles, routes, and houses.

HAZARD (perceived likelihood & impact)	WARNING & ACTIONS	IMPACTS
 <p>8. Hazardous Substances</p>	<p>Warning - FENZ warning.</p> <p>Actions:</p> <ul style="list-style-type: none"> • Evacuate the immediate area. • Call 111 for assistance. • Identify the substance if safe to do so. 	<ul style="list-style-type: none"> • Contamination of land. • Poisoning of people and animals. • Damage to crops. • Evacuation of affected areas.

HAZARD RISK PROFILE & MAPS

Flooding Risk

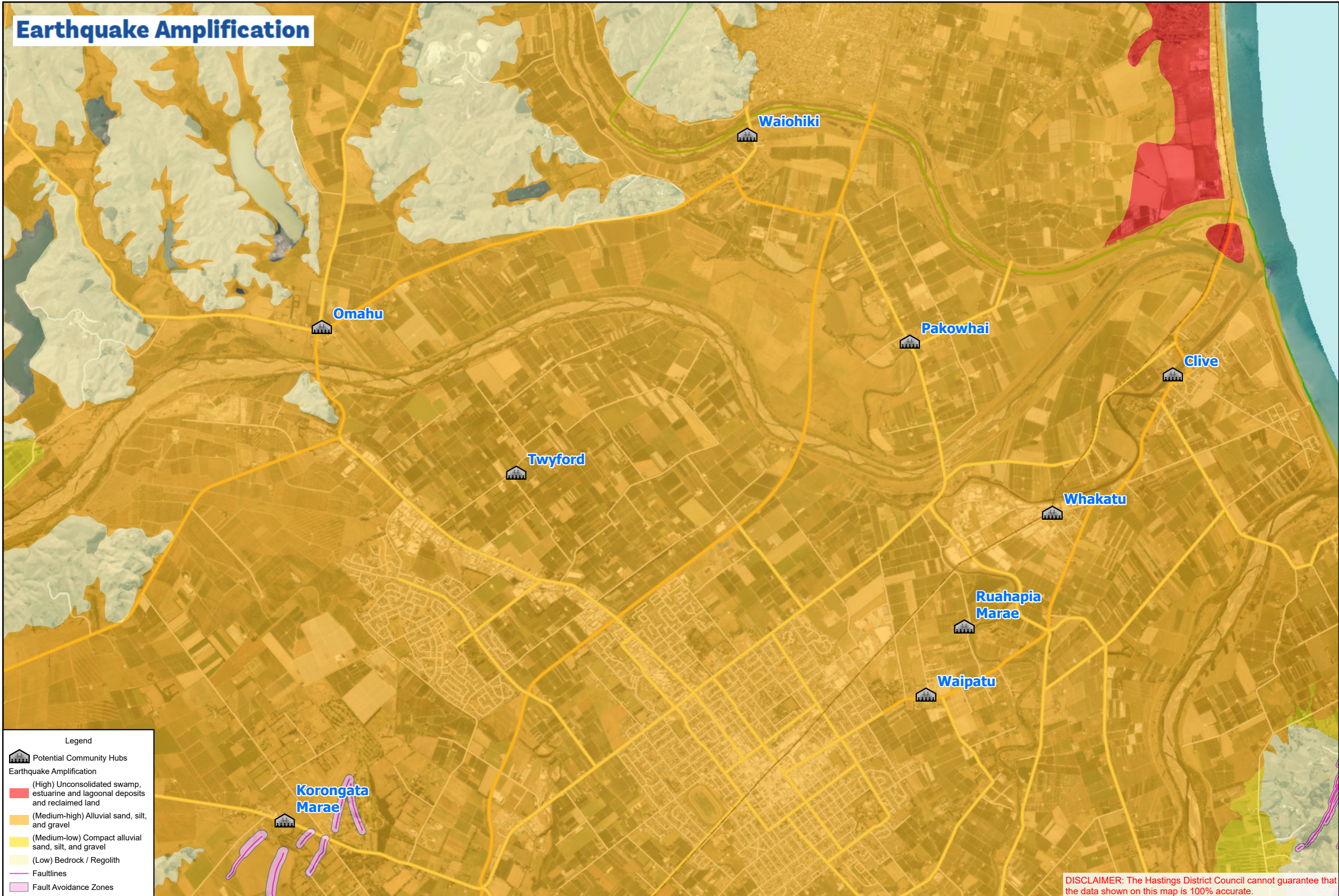


Legend

- Potential Community Hubs
- Flood Risk Areas**
- Flood risk areas
- Low risk areas
- Outside modelled area

DISCLAIMER: The Hastings District Council cannot guarantee that the data shown on this map is 100% accurate.

Earthquake Amplification

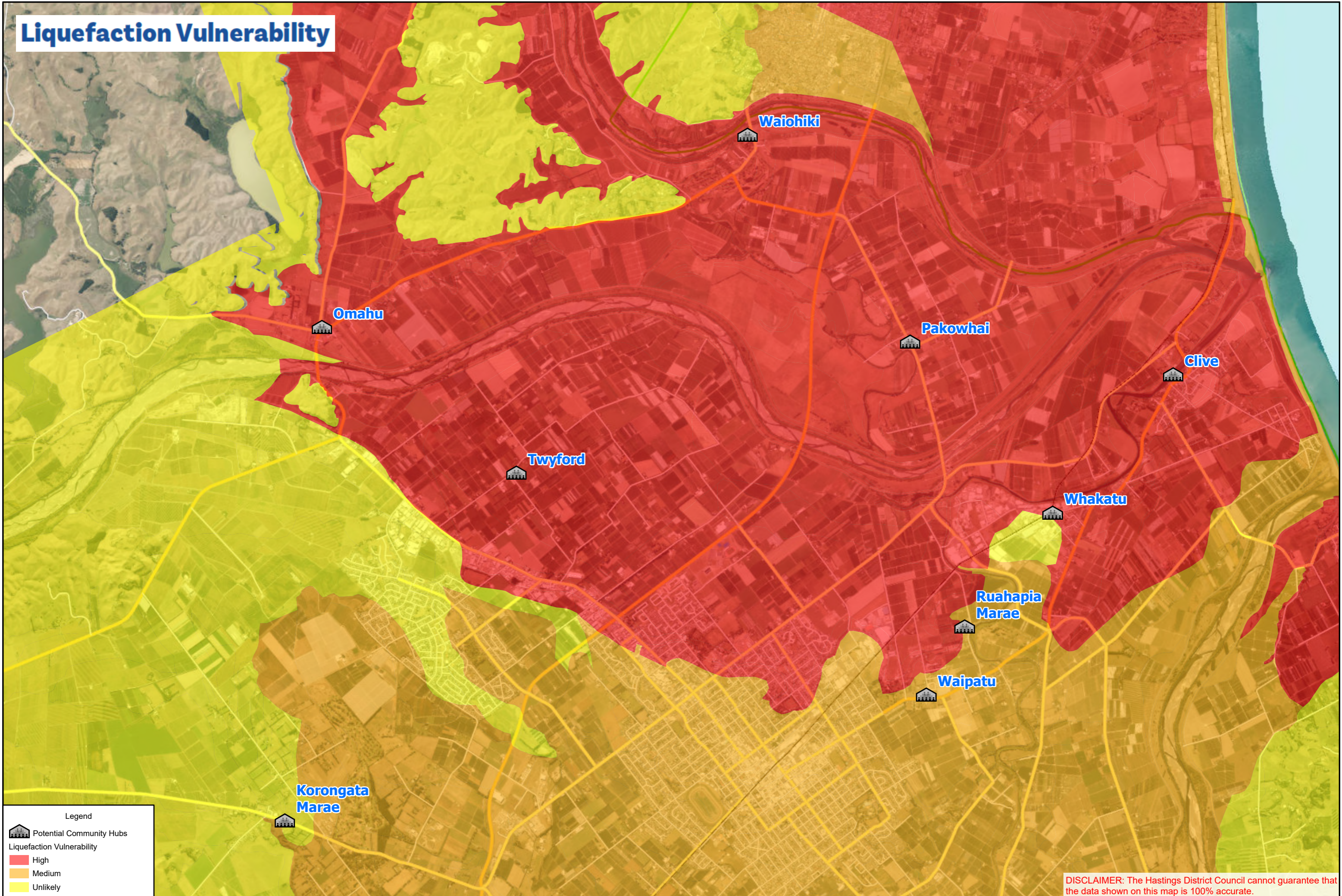


Legend

- Potential Community Hubs
- Earthquake Amplification**
- (High) Unconsolidated swamp, estuarine and lagoonal deposits and reclaimed land
- (Medium-high) Alluvial sand, silt, and gravel
- (Medium-low) Compact alluvial sand, silt, and gravel
- (Low) Bedrock / Regolith
- Faultlines
- Fault Avoidance Zones

DISCLAIMER: The Hastings District Council cannot guarantee that the data shown on this map is 100% accurate.

Liquefaction Vulnerability

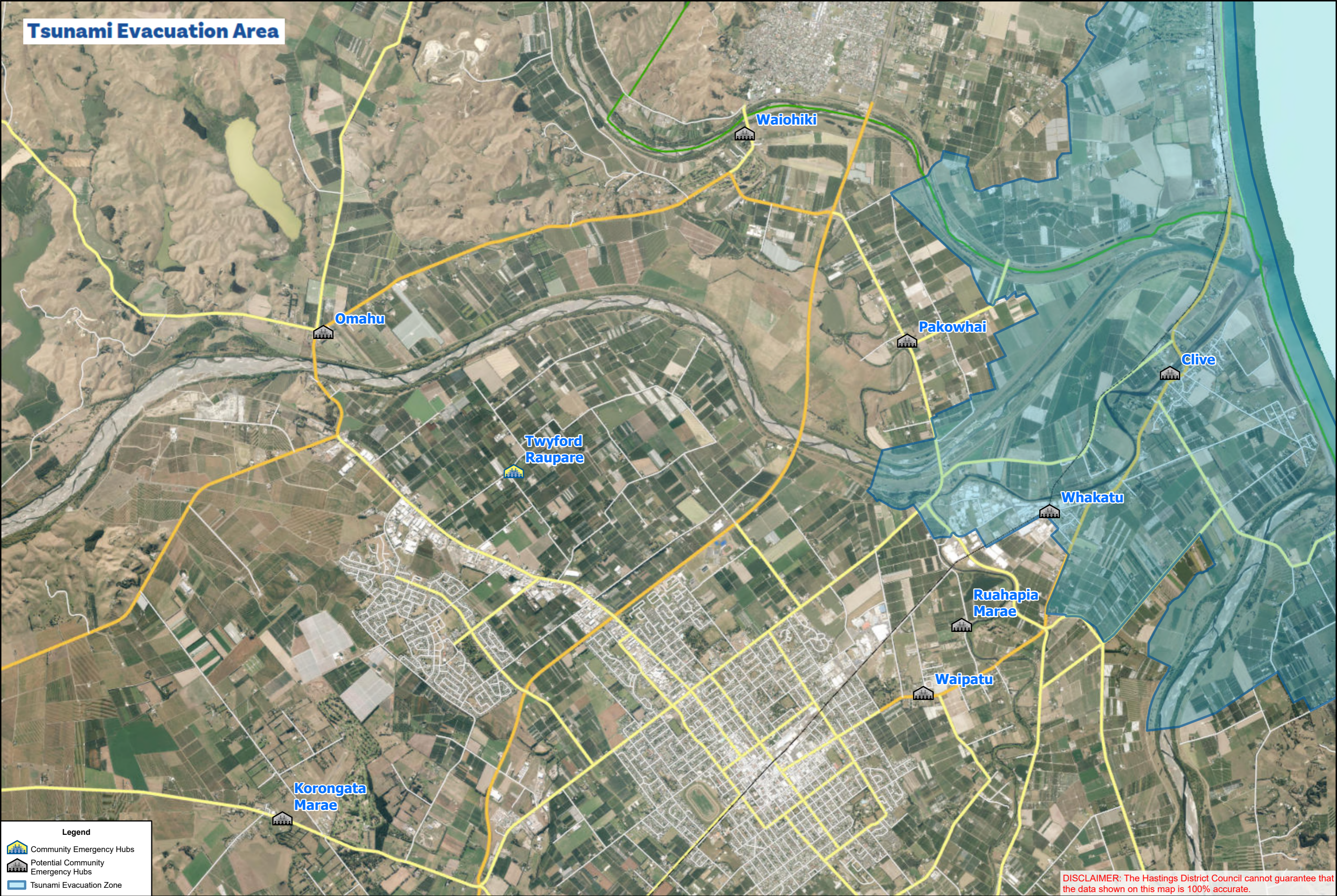


Legend




- Potential Community Hubs
- Liquefaction Vulnerability**
 - High
 - Medium
 - Unlikely

DISCLAIMER: The Hastings District Council cannot guarantee that the data shown on this map is 100% accurate.

Tsunami Evacuation Area



Legend

-  Community Emergency Hubs
-  Potential Community Emergency Hubs
-  Tsunami Evacuation Zone

DISCLAIMER: The Hastings District Council cannot guarantee that the data shown on this map is 100% accurate.

VULNERABILITIES & VALUED STRENGTHS

	VULNERABILITIES	STRENGTHS
Social / Cultural	<ul style="list-style-type: none"> ○ Aged residents with physical limitations and medical requirements. ○ Areas proximity to Hastings can result in the needs of the community being overlooked. ○ Language barrier with RSE workers. 	<ul style="list-style-type: none"> ○ Skills in the community, including: <ul style="list-style-type: none"> ● Farmers ● Doctors & Nurses ● Tradies ● Engineers ○ RSE workers. ○ Partial database of community contacts. ○ Emergency power available at Twyford Hall Community Emergency Hub and Twyford School. ○ Resourceful community with response experience.
Built	<ul style="list-style-type: none"> ○ Poor cellphone coverage. ○ Stopbanks breached during Cyclone Gabrielle. 	<ul style="list-style-type: none"> ○ Twyford Hall Community Emergency Hub well stocked with supplies and generator power. ○ Twyford School as back-up Community Emergency Hub to coordinate response. ○ CCTV system at Hall & Community. ○ BBQ, hot plate, and other cooking equipment at Hall. ○ WiFi through school. ○ Generator powered water pump at school.
Economic	<ul style="list-style-type: none"> ○ Agriculture (Crops). ○ Stock. ○ Various industries. 	<ul style="list-style-type: none"> ○ Earthworks business. ○ Numerous Starlink terminals in community. ○ Starlink terminal at the Community Emergency Hub, ready to be activated. ○ Access to heavy machinery, including earth movers, tractors, 4x4, ATVs, machinery inc. chainsaws. ○ PPE (including masks) available from nearby businesses.
Natural	<ul style="list-style-type: none"> ○ Flat contour (flood plain). ○ Liquefaction risk. ○ Earthquake shaking amplification risk. ○ Ample fuel for wildfires. 	<ul style="list-style-type: none"> ○ Fertile soils.

COMMUNITY RESOURCES



Our community is the best source of resources to help each other.

What are the items, skills, people, and places we can identify within our community to use?

RESOURCES & CAPABILITY	
Places & Spaces	<ul style="list-style-type: none"> ○ Twyford Raupare Memorial Hall as a Community Emergency Hub [160 Thompson Road, Twyford - 39°36'06.3"S 176° 47'50.9"E]. ○ RSE accommodation. ○ Foodstuff depot. ○ Pask Winery. ○ Roosters Brewhouse. ○ Cool stores (if empty). ○ Unison depot. ○ Twyford School. ○ Packhouse.
Infrastructure	<ul style="list-style-type: none"> ○ Stopbanks. ○ Hospital in proximity. ○ Access to SH2.
Networks & Groups of People	<ul style="list-style-type: none"> ○ Resilience Hub team. ○ Twyford Water Users Group. ○ Horticulture businesses. ○ Coffee groups. ○ School community. ○ Businesses on Omahu Road. ○ Playcentre. ○ Facebook group.
Services in our Community	<ul style="list-style-type: none"> ○ Church. ○ Unison. ○ Caltex Petrol Station, 1108 Omahu Road. ○ Bakeries (x2). ○ Captain Salty (Fish & Chips). ○ Roosters (Bar & Eatery). ○ First Aid kits: Ruapare Twyford Memorial Hall, 160 Thompson Road. ○ AED Defibrillator locations: <ul style="list-style-type: none"> ● Twyford Hall, 144 Thompson Road. ● RJ Flowers, 122 Twyford Road. ● Bayley Packhouse, 58 Jarvis Road, Twyford 4175 ● ATI Engineering, 1414 Omahu Road. ● Downer, 1436 Omahu Road. ● Cableprice, 1400 Omahu Road. ● Citycare, 1432 Omahu Road.

POTENTIAL IMPACTS & RESPONSES

IMPACT	HAZARD	RESPONSES
Need to evacuate	Tsunami, Storm/Flood, Fire, Volcanic Ash, Landslide	<ul style="list-style-type: none"> • Grab bags prepared. • House/building security. • Community Emergency Hub location with basic supplies.
Stuck at home	Earthquake, Storm/Flood, Volcanic Ash, Pandemic, Landslide	<ul style="list-style-type: none"> • Households have additional food, water & medication supplies. • Community Emergency Hub with communications.
Can't get home	Earthquake, Tsunami, Storm/Flood, Fire, Volcanic Ash, Landslide	<ul style="list-style-type: none"> • Food supplies for 3 meals a day for 3 days for 150 people. • Communication through Community Emergency Hub network.
Injuries/ medical needs	All	<ul style="list-style-type: none"> • Households with trained first aiders and first aid supplies. • Community Emergency Hub first aid kit for 100 people. • Doctors and Nurses living in the community. • AED at Community Hall
No water	Earthquake, Tsunami, Storm/Flood, Fire, Volcanic Ash	<ul style="list-style-type: none"> • Household water tanks. • Household stores of bottled water. • River water (requires boiling).
No electricity	Earthquake, Tsunami, Storm/Flood, Fire, Landslide	<ul style="list-style-type: none"> • Household generators – held by many.
No communications (phone or internet)	Earthquake, Tsunami, Storm/Flood, Fire, Volcanic Ash	<ul style="list-style-type: none"> • Starlink at Twyford Hall, and in the wider community.
Loss of road access	Earthquake, Tsunami, Storm/Flood, Fire, Volcanic Ash, Landslide	<ul style="list-style-type: none"> • Orchard/Paper roads to bypass damaged roading. • Farm machinery available to restore road access.

RESILIENCE TOOLS

TOOLS		STATUS
1.	Personal preparedness enablers: Household Plan & Grab & Go Bag.	To be started
2.	Community resilience & hub training, including lanyards roles.	In Progress
3.	Community events - 4-5 community events/yr	On Going
4.	Social media: Twyford NZ Community Facebook page	On Going
5.	Regular hub co-ordinator get-togethers.	On Going
6.	Develop community evacuation planning for flooding scenarios	To be started
7.	Develop a response plan for RSE workers	To be started
8.	Identify back-up CEH locations	To be started
9.	Community Resource Knowledgebase	To be started

STAY?

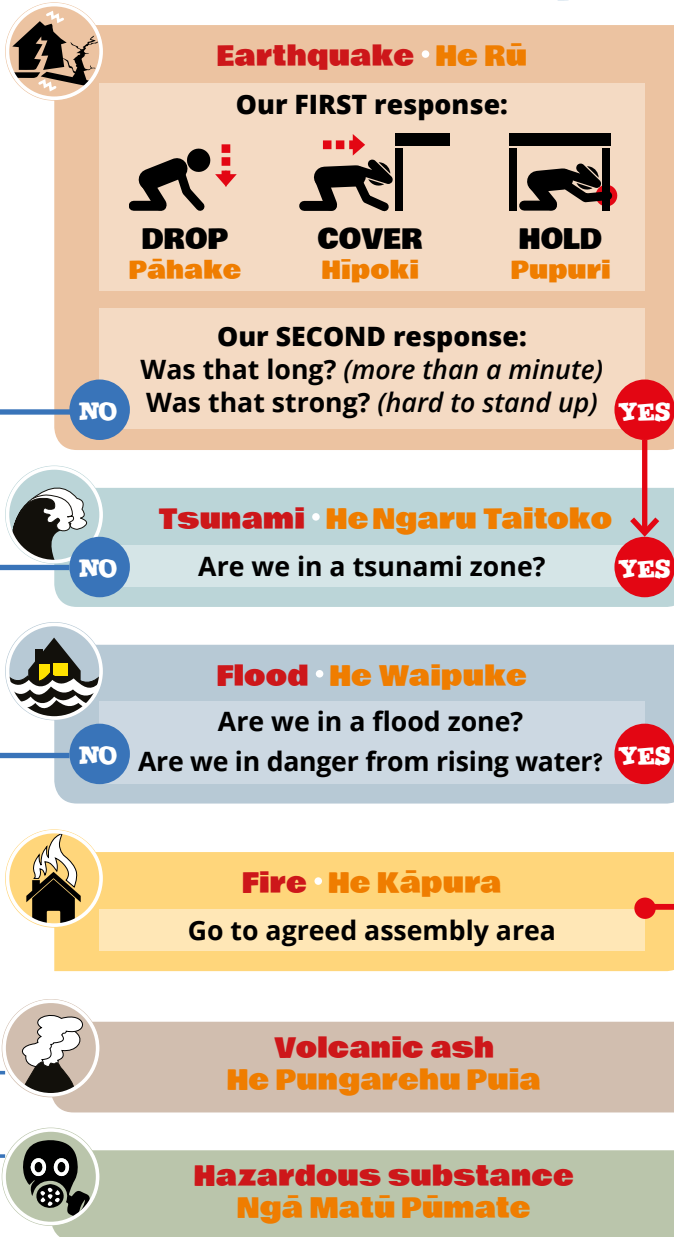
ME NOHO?

SHELTER IN PLACE

Me Noho Ki Taua Wāhi



Our hazard decision path



OR GO?

ME HAERE RĀNEI?



IN AN EMERGENCY YOU WILL NEED:



AN EMERGENCY PLAN

Make a plan for your household, whānau and pets to get through an emergency, consider;

- Where will you meet or evacuate to?
 - How will you look after each other?
 - Who might need our help?
 - Who will we need to contact?
 - What will we do if we are stuck at home?
 - What will we do if we have no power, no water, no way to get information?
-



EMERGENCY SUPPLIES

You don't have to have them all in one place, but you might have to find them in a hurry and/or in the dark, store:

- Three litres of water per person per day.
 - First aid kit.
 - Long-lasting food that doesn't need cooking, or a way to safely cook or heat food without electricity, and extra fuel.
 - Consider also specific food needs of babies, children and pets.
 - Torch.
 - Emergency cash.
 - Half a tank of fuel in your vehicle.
 - Toilet paper and large plastic buckets for an emergency toilet.
 - Work gloves and a properly fitted mask.
-



EMERGENCY GRAB BAG

Pack your emergency grab bag with basic supplies including:

- Walking shoes, warm clothes, raincoat, and hat.
 - Water and snack food (remember babies and pets too).
 - Hand sanitizer & face mask.
 - Portable phone charger.
 - Cash.
 - Copies of important documents and Photo ID.
 - Medication.
 - Small first aid kit.
-

Remember your grab bag should be light enough that you can still carry it.

APPENDIX A: INTERNAL & EXTERNAL COMMUNICATION

Communication: Internal

The following table lists the different methods the community can use to communicate with each other:

	AREA/GROUP	NEED/ISSUE	APPROACH
1.	All	Information Sharing	<ul style="list-style-type: none">• Twyford NZ Community Facebook page• School Hero app• Industry communications• Call tree (to be developed)

APPENDIX A: INTERNAL & EXTERNAL COMMUNICATION

Communication: Emergency Agencies

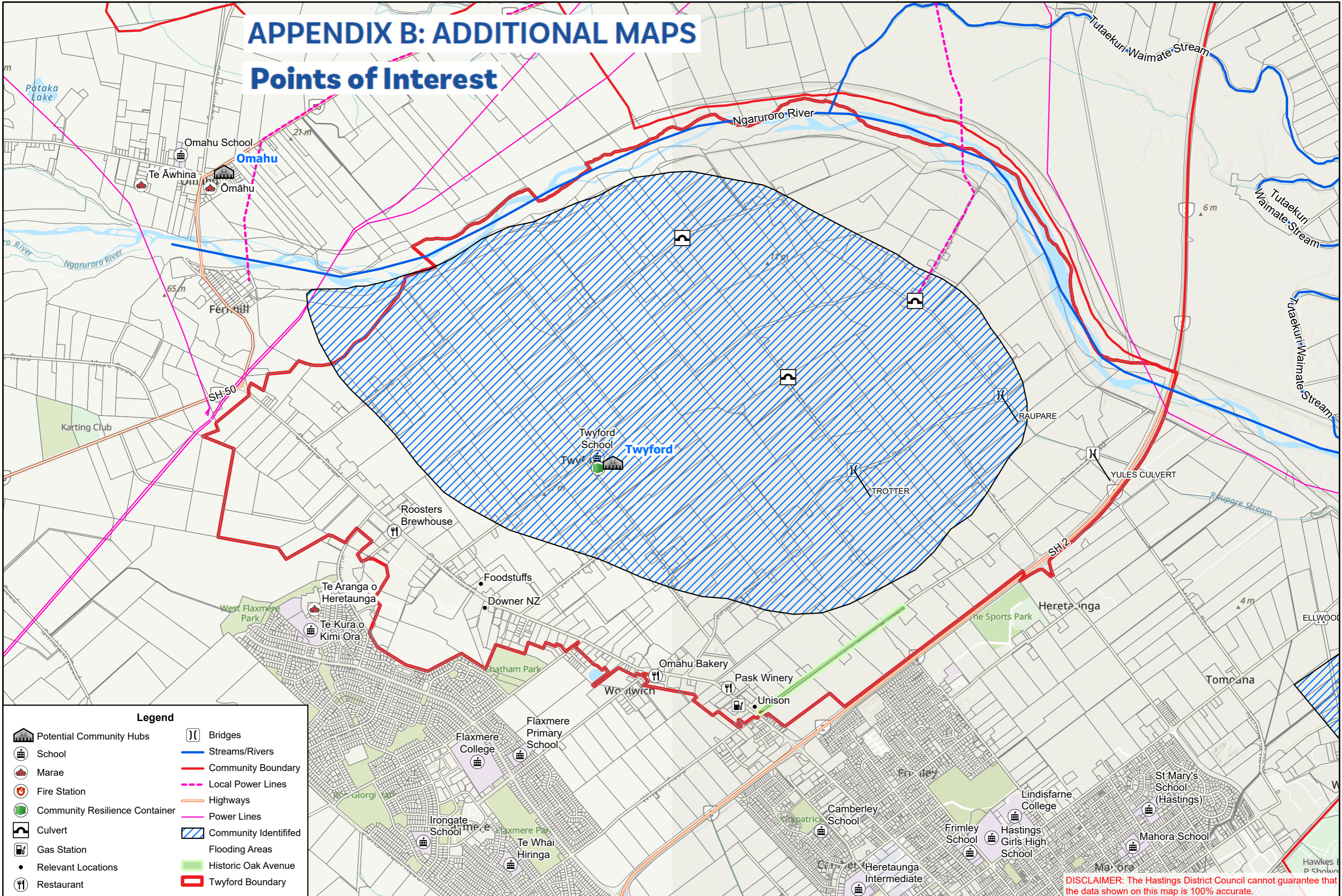
The following table lists the contact details for Emergency Agencies:

Monitor the following sources of information to stay informed:
Television | Radio [Frequencies: 90.3FM, 89.5FM, 97.5FM, 94.5FM]
Online Websites & Social Media (Official & Community Pages)
IMPORTANT: Call **111** for all urgent or emergency situations.

AGENCY	NEED/ISSUE	CONTACT/SOURCES OF INFORMATION
Police	Risk to people or property	Urgent: Call 111 OR Non-urgent: Call 105 or online
Fire & Emergency New Zealand (FENZ)	Risk to people or property	Call 111
Ambulance (St John)	Risk to people	Call 111
Hawke's Bay Emergency Management Office	Warnings, alerts, advice and key information before, during and after an emergency.	Online: https://www.hbemergency.govt.nz/ OR Facebook – HB Civil Defence Emergency Management Group.
MetService	Severe weather warnings, alerts.	Online https://www.metservice.com/warnings/home
Hastings District Council	Status of: <ul style="list-style-type: none"> local roads (i.e. not state highways) Urban water supply Urban wastewater (sewerage). Solid waste/rubbish collection and disposal. 	Call (06) 871 5000 (24/7) OR Email: customerservice@hdc.govt.nz (Monday to Friday 9am – 5pm) Facebook - Hastings District Council - Te Kaunihera ā-Rohe o Heretaunga Road status: https://www.hastingsdc.govt.nz/services/roads-and-streets/road-works
New Zealand Transport Agency (NZTA) / Waka Kotahi	Status of State Highways	Call: 0800 4 HIGHWAYS or (0800 44 44 49) Online: https://www.journeys.nzta.govt.nz/highway-conditions/ OR Facebook – NZ Transport Agency Waka Kotahi – Hawke's Bay & Gisborne
Unison Networks	Status of power supply	Call 0800 2 UNISON or 0800 2 86476 OR Online https://www.unison.co.nz/outages/
Hawke's Bay Regional Council (HBRC)	Status of: <ul style="list-style-type: none"> Rainfall. River levels and flows. Flood control and drainage. Air quality. 	Call (06) 835 9200 (24/7) OR 0800 108 838 OR Email: info@hbrc.govt.nz (Monday to Friday 8am – 5pm) OR Facebook – Hawke's Bay Regional Council

APPENDIX B: ADDITIONAL MAPS

Points of Interest

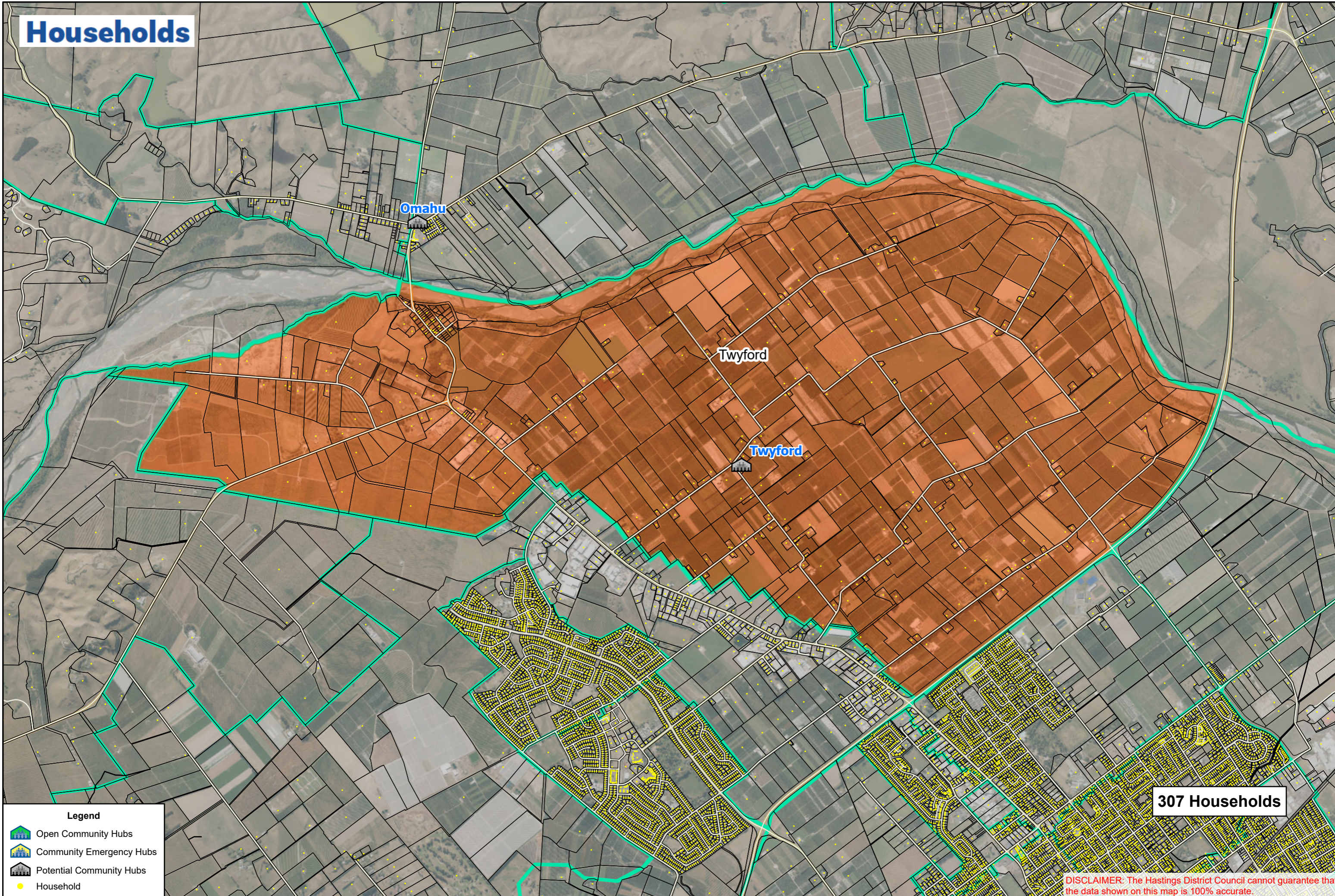


Legend

Potential Community Hubs	Bridges
School	Streams/Rivers
Marae	Community Boundary
Fire Station	Local Power Lines
Community Resilience Container	Highways
Culvert	Power Lines
Gas Station	Community Identified Flooding Areas
Relevant Locations	Historic Oak Avenue
Restaurant	Twyford Boundary

DISCLAIMER: The Hastings District Council cannot guarantee that the data shown on this map is 100% accurate.

Households

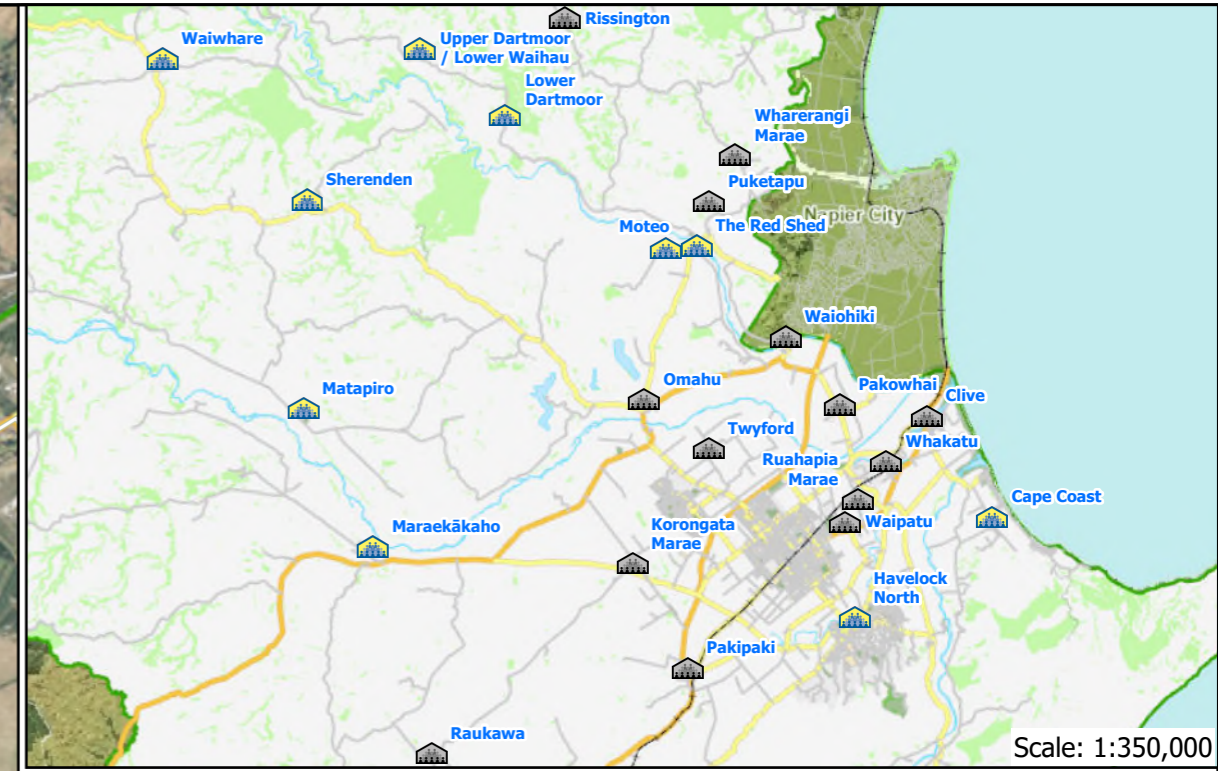
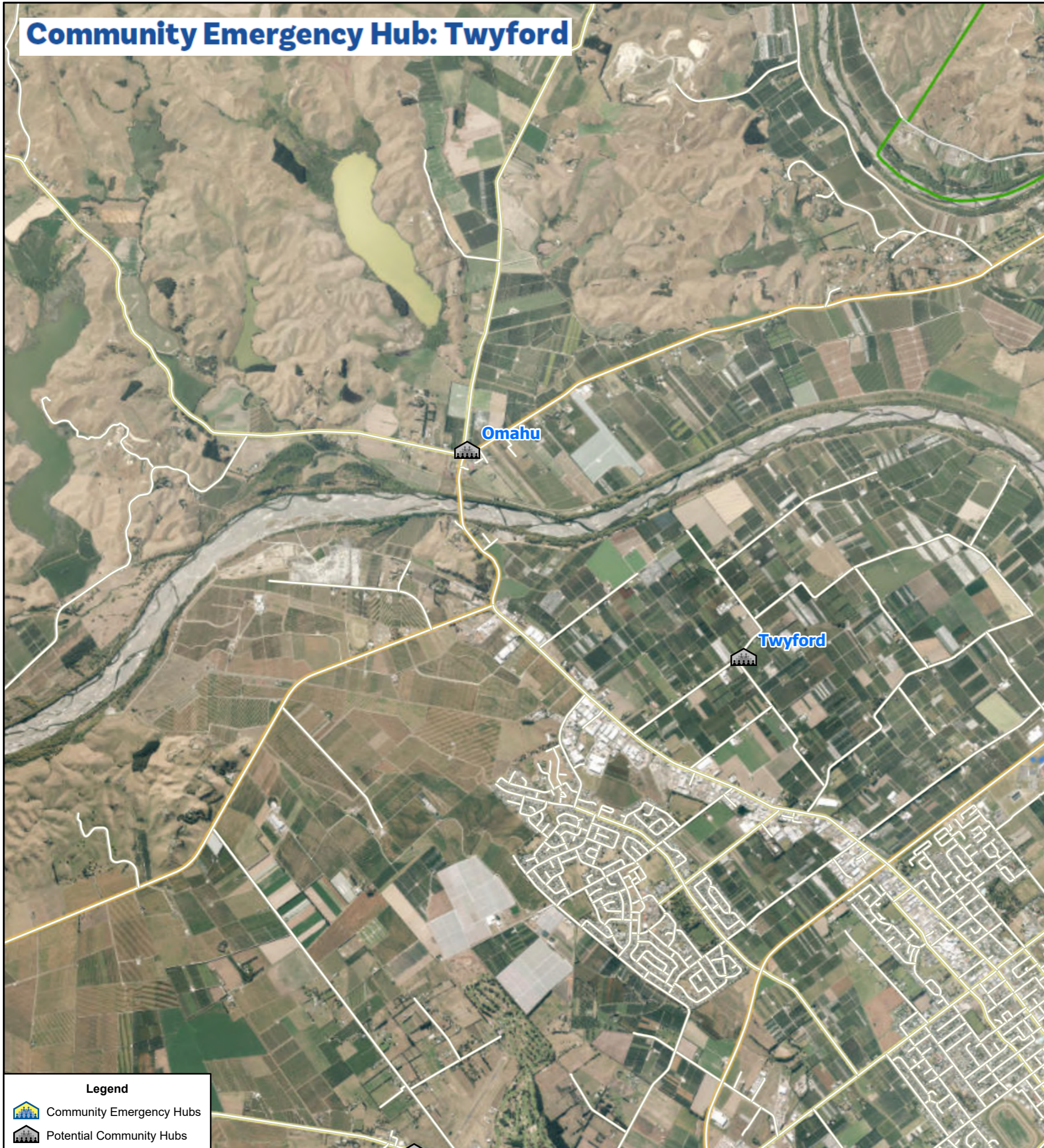


Legend

- Open Community Hubs
- Community Emergency Hubs
- Potential Community Hubs
- Household

DISCLAIMER: The Hastings District Council cannot guarantee that the data shown on this map is 100% accurate.

Community Emergency Hub: Twyford



Legend

- Community Emergency Hubs
- Potential Community Hubs

DISCLAIMER: The Hastings District Council cannot guarantee that the data shown on this map is 100% accurate.

Produced by: andrec

Emergency_Hub_Twyford