



HE MAHERE OHOTATA MŌ  
TE HAPORI

# Waipatu Marae

## Community Resilience Plan



**HERETAUNGA  
HASTINGS** DISTRICT COUNCIL



HAWKE'S BAY  
EMERGENCY MANAGEMENT

GROUP

[hbemergency.govt.nz](http://hbemergency.govt.nz)

Date: 23 September 2025 Version: 2.0 Approved By:

Emergency Management Operations Team Leader

# RĀRANGI TAKE

## Contents

### Kupu arataki

<b>INTRODUCTION</b>	<b>1</b>
What to do during and after an emergency	4
What hazards do we have?	6
Hazard profiles & maps	9
Strengths & vulnerabilities	13
Community resources & capability	14
Potential impacts & responses	15
Resilience tools	16
In an emergency you will need	18
Appendices & resources	19

# KUPU ARATAKI

## INTRODUCTION

The purpose of this Community Resilience Plan is to help our community to ensure measures are in place to help us look after each other before, during, and after an emergency.

This writing and information within this plan comes from our community.



## Description of our community

Waipatu is a culturally rich and semi-rural suburb nestled just north of central Hastings, offering a unique blend of heritage, community spirit, and agricultural charm. Situated on the lush Heretaunga Plains and conveniently accessed via State Highway 2, Waipatu enjoys both scenic tranquillity and proximity to urban amenities.

Waipatu & Ruahapia Marae are cornerstones of the community, serving as vibrant hubs for Ngāti Kahungunu traditions and gatherings.

***He waka eke noa***  
***We are all working together***

This community includes the following areas:

- State Highway 51 (Karamu Road) from Tomoana Showgrounds to the bridge across Karamu Stream. The east is bounded by the stream.
- Ruahapia Road to Otene Road, bounded to the railway line.
- Kenilworth Road to Otene Road, bounded to the railway line.
- Waipatu Settlement Road to St Georges Road.
- Watson, Bennett, Elwood and Paraire Roads.

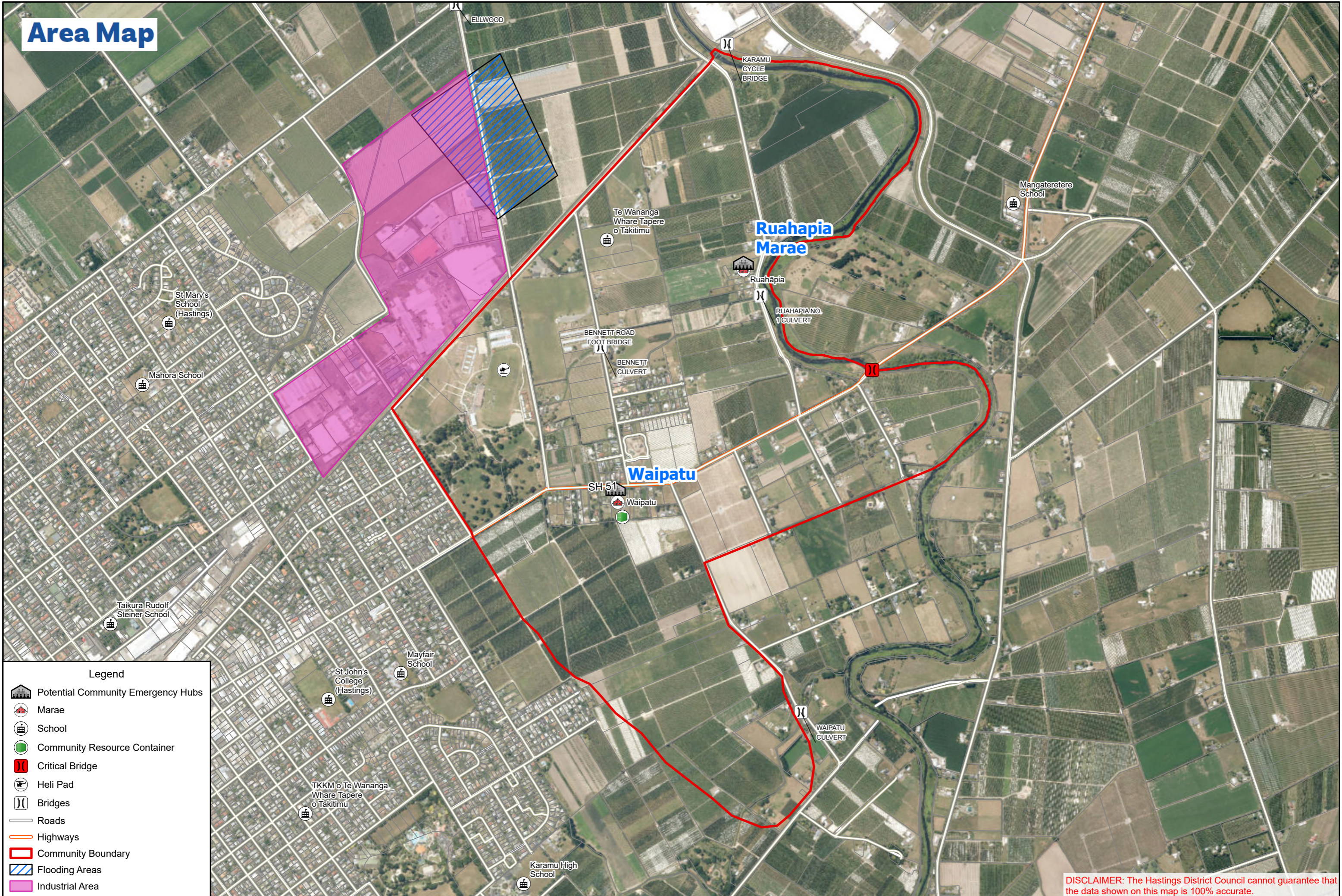
### **Plan Principles:**

This plan is based on the following key principles:













- Life safety is paramount, and all actions should aim to achieve this outcome.
- The community is prepared to:
  - Self-evacuate as early as possible, or
  - Be self-sufficient for at least 14 days.
- Community support will be coordinated through the Community Emergency Hub at Waipatu Marae.

***He waka eke noa***  
***We are all working together***

# Area Map



**Legend**

-  Potential Community Emergency Hubs
-  Marae
-  School
-  Community Resource Container
-  Critical Bridge
-  Heli Pad
-  Bridges
-  Roads
-  Highways
-  Community Boundary
-  Flooding Areas
-  Industrial Area

**DISCLAIMER:** The Hastings District Council cannot guarantee that the data shown on this map is 100% accurate.

# I TE WĀ O TE OHOTATA

## WHAT TO DO DURING AND AFTER AN EMERGENCY



### STEP 1

Try to stay calm, check yourself and others in your household for injuries, for minor injuries provide first aid, then assess your home for damage.

**Is everything ok?**

**NO**



### STEP 2

If you or anyone in your household have significant injuries call **111 immediately**.  
If your home is not safe, **evacuate immediately and call 111**.

**YES**



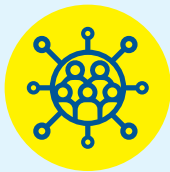
### STEP 3

Check on your immediate neighbours. Assess your surroundings for damage, check on your street & neighbourhood.

**If safe to proceed go to STEP 4**



A place for your community to gather and help each other out during an emergency.



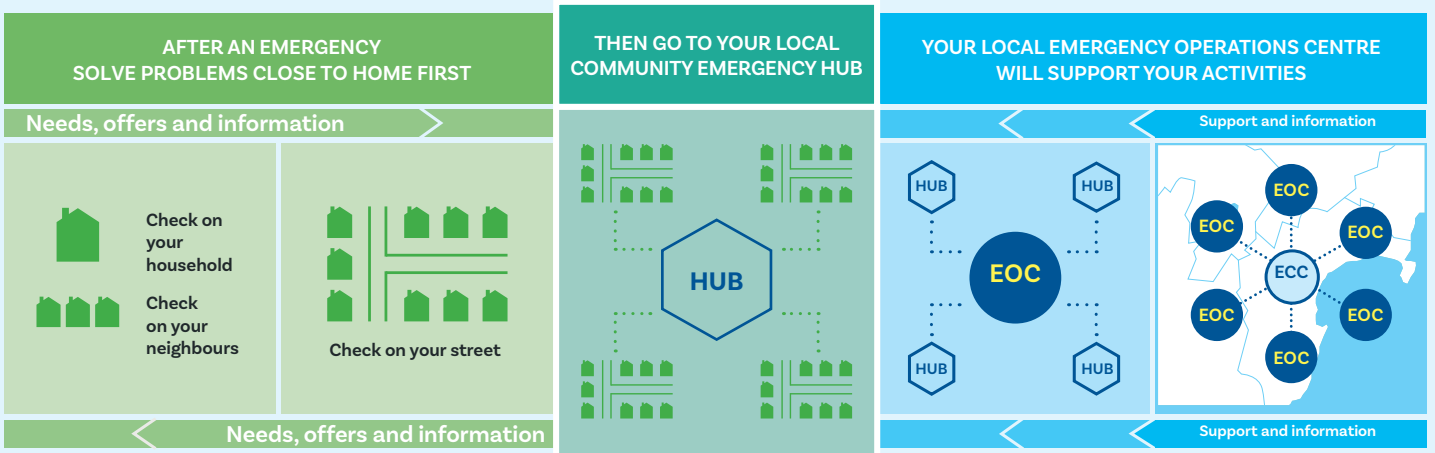
**STEP 4**

**Go to your local Community Emergency Hub.**

The Hub is a designated place where your community can gather, connect with one another, and solve problems using the skills and resources which already exist among your community.

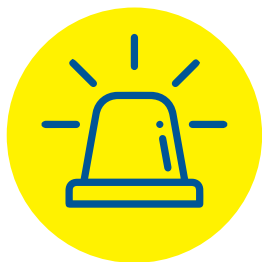
Community Emergency Hubs are a place for people to work together to solve problems locally while still coordinating with councils about big problems.

See page 22 for a map of your local Hub locations.






During an emergency, councils will stand up an Emergency Operations Centre (EOC) to respond. The EOC will give support and information back into the community, and give information to the regional Emergency Coordination Centre (ECC).





# WHAT HAZARDS DO WE HAVE?





Below is a list of the hazards that could cause an emergency in our community. More information on these hazards, and what you can do before, during and after an emergency, can be found on the HB Emergency Website ([www.hbemergency.govt.nz](http://www.hbemergency.govt.nz)).

These hazards, perceived likelihood and impact, warning type, and immediate actions were decided with the community.

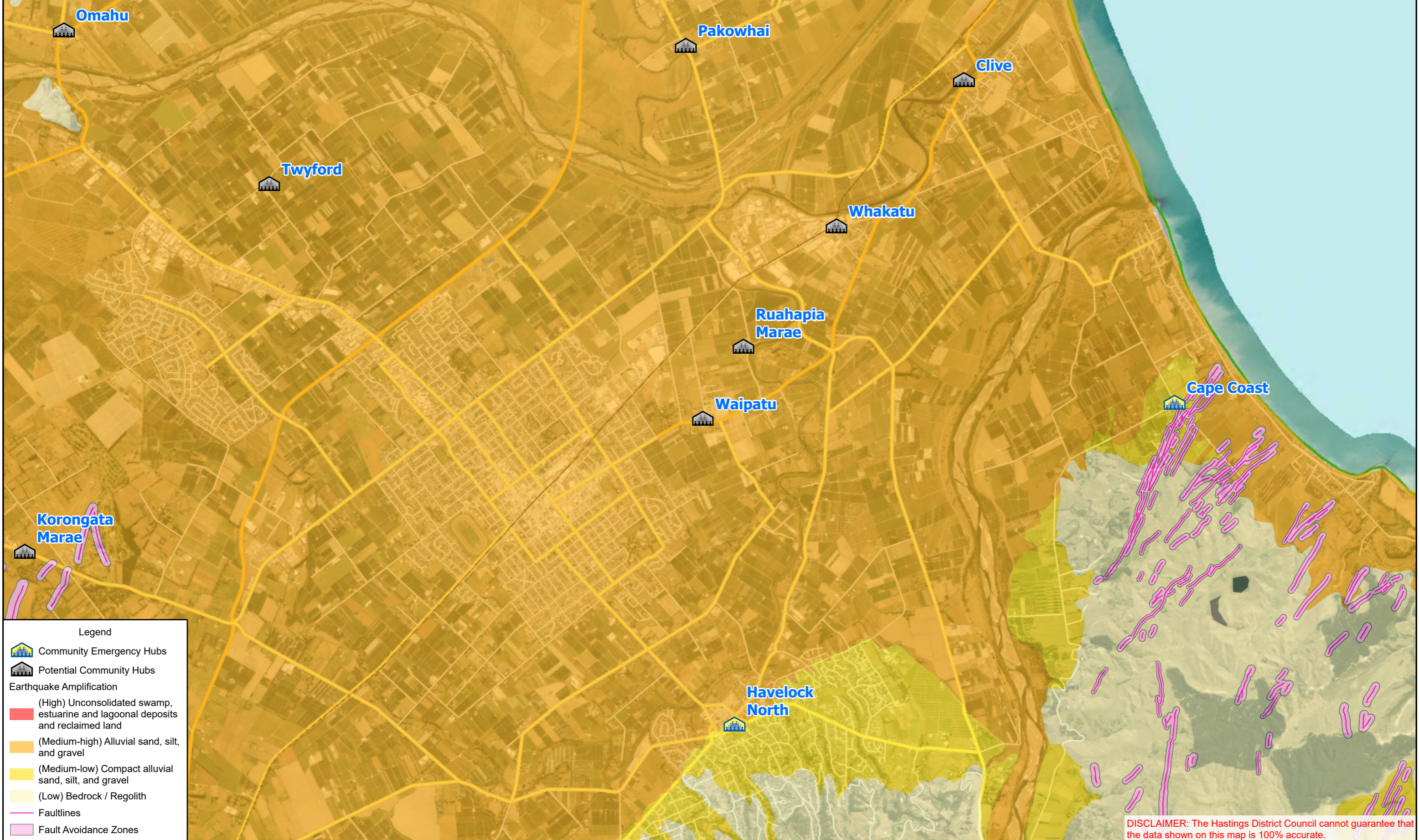
HAZARD (perceived likelihood & impact)	WARNING & ACTIONS	IMPACTS
 <p><b>1. Storm, Flood, and Severe Weather</b></p>	<p>Warning - MetService warning. Information disseminated by Hawke's Bay Emergency Management Office (HB EMO) and council.</p> <p>Actions:</p> <ul style="list-style-type: none"> <li>• Self-evacuate to high ground if you see floodwater rising.</li> <li>• Do not wait for an official warning.</li> <li>• Preferably stay with friends or family out of the hazardous area.</li> </ul>	<ul style="list-style-type: none"> <li>• Flooding, coastal inundation and landslides.</li> <li>• Damage from high wind.</li> <li>• Loss of electricity.</li> <li>• Evacuation of flood zones.</li> <li>• Isolated communities.</li> </ul>
 <p><b>2. Earthquake</b></p>	<p>Warning - Earthquakes are rapid onset events and occur without warning.</p> <p>Actions:</p> <ul style="list-style-type: none"> <li>• Drop, Cover, Hold, including during aftershocks.</li> </ul>	<ul style="list-style-type: none"> <li>• Damage to buildings, roads and bridges.</li> <li>• Loss of water, electricity, and communication.</li> <li>• Isolation and cut off communities.</li> </ul>
 <p><b>3. Tsunami</b></p>	<p>Warning - A long or strong earthquake, unusual changes to sea level, strange noises from the sea.</p> <p>Actions:</p> <ul style="list-style-type: none"> <li>• Communities from coastal areas will evacuate to higher ground.</li> </ul>	<ul style="list-style-type: none"> <li>• Inundation of coastal areas.</li> <li>• Strain on inland community resources.</li> <li>• Large scale displacement.</li> <li>• Loss of water, electricity and communications.</li> <li>• Economic impacts.</li> </ul>

<b>HAZARD</b> (perceived likelihood & impact)	<b>WARNING &amp; ACTIONS</b>	<b>IMPACTS</b>
 <p><b>4. Human Pandemic</b></p>	<p>Warning - Te Whatu Ora - Health NZ warning. Information shared by HB EMO and council.</p> <p>Actions:</p> <ul style="list-style-type: none"> <li>• Stay home if you are unwell.</li> <li>• Use hygiene measures including washing hands and using masks.</li> </ul>	<ul style="list-style-type: none"> <li>• Widespread illness.</li> <li>• Schools, businesses, and community spaces shut and/or face disruption of services.</li> </ul>
 <p><b>5. Hazardous Substances</b></p>	<p>Warning - FENZ warning.</p> <p>Actions:</p> <ul style="list-style-type: none"> <li>• Evacuate the immediate area.</li> <li>• Call 111 for assistance.</li> <li>• Identify the substance if safe to do so.</li> </ul>	<ul style="list-style-type: none"> <li>• Contamination of land.</li> <li>• Poisoning of people and animals.</li> <li>• Damage to crops.</li> <li>• Evacuation of affected areas.</li> </ul>
 <p><b>6. Critical Infrastructure Failure (roads, bridges &amp; power)</b></p>	<p>Warning - Unplanned loss of service. HB EMO, HDC, HBRC, NZTA and Unison websites, and social media.</p> <p>Actions:</p> <ul style="list-style-type: none"> <li>• Shelter in place.</li> <li>• Check on neighbours and friends in the area.</li> </ul>	<ul style="list-style-type: none"> <li>• Restrictions to the areas people can access.</li> <li>• May cause distress or health issues for people</li> </ul>
 <p><b>7. Fire</b></p>	<p>Warning - Natural (Smoke). FENZ warning.</p> <p>Actions:</p> <ul style="list-style-type: none"> <li>• Evacuate to an unaffected area.</li> <li>• Preferably stay with friends or family out of the hazardous area.</li> </ul>	<ul style="list-style-type: none"> <li>• Damage to buildings.</li> <li>• Restrictions to the areas people can access.</li> <li>• Impact on infrastructure, services, and commercial actions.</li> </ul>

<b>HAZARD</b> (perceived likelihood & impact)	<b>WARNING &amp; ACTIONS</b>	<b>IMPACTS</b>
 <p><b>8. Volcanic Ashfall</b></p>	<p>Warning - Warning through GeoNet, HB EMO, and HDC.</p> <p>Actions:</p> <ul style="list-style-type: none"> <li>• Shelter in place.</li> <li>• Disconnect downpipes to tank water.</li> <li>• Seal windows and doors.</li> <li>• DO NOT use vehicles or machinery until ashfall stops.</li> </ul>	<ul style="list-style-type: none"> <li>• Damage to crops.</li> <li>• Health impacts and difficulty breathing if ash is inhaled.</li> <li>• Disruption to electricity, communications, and services.</li> <li>• Damage to vehicles, routes, and houses.</li> </ul>
 <p><b>9. Biosecurity (animal &amp; plant diseases/pests)</b></p>	<p>Warning - National notification (MPI), HBRC.</p> <p>Actions:</p> <ul style="list-style-type: none"> <li>• Surveillance programmes for pests and diseases to contain the outbreak.</li> </ul>	<ul style="list-style-type: none"> <li>• Impact to native/indigenous species.</li> <li>• Impacts on agricultural businesses and communities.</li> </ul>

# HAZARD RISK PROFILE & MAPS

## Earthquake Amplification



**Legend**

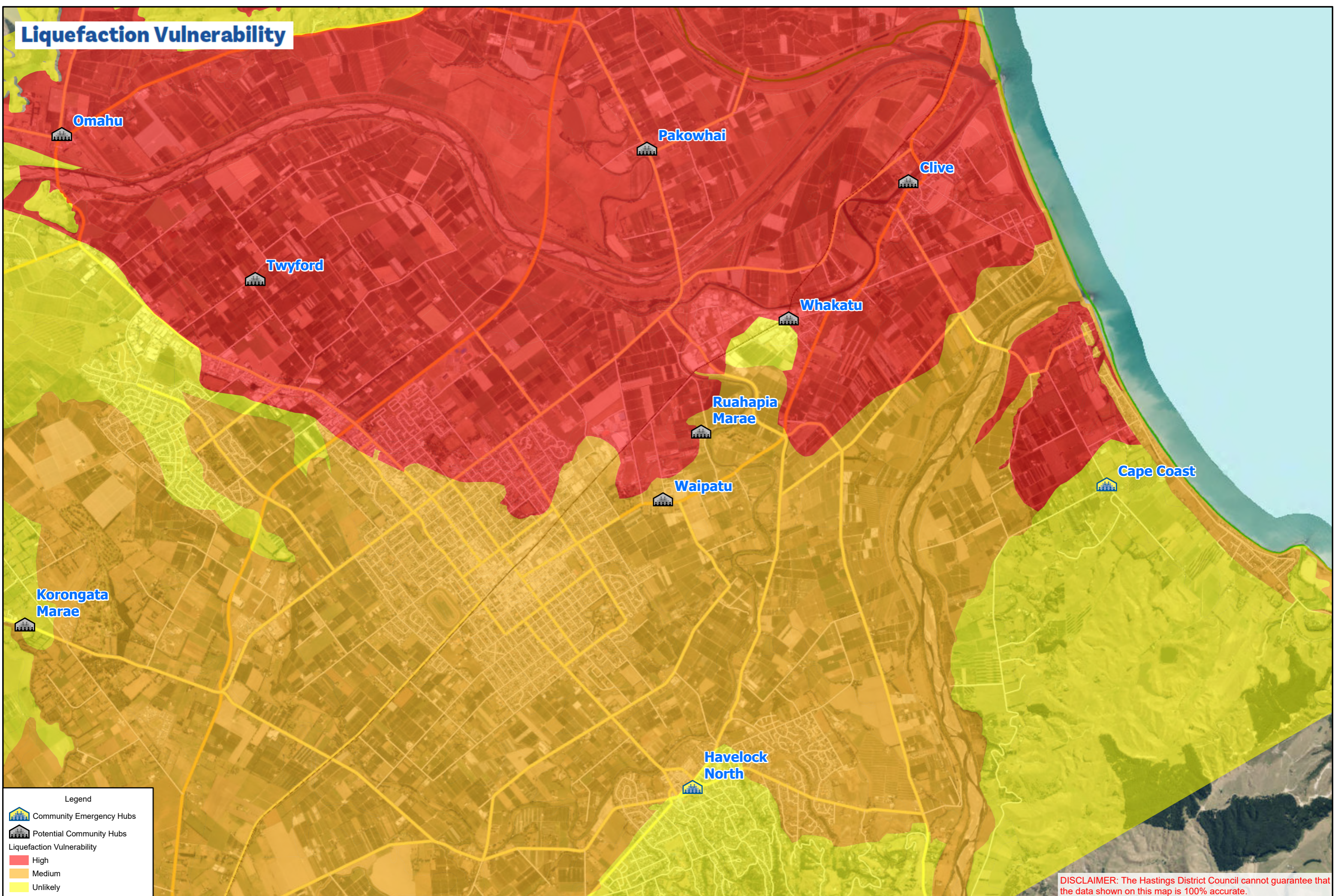
- Community Emergency Hubs
- Potential Community Hubs

**Earthquake Amplification**

- (High) Unconsolidated swamp, estuarine and lagoonal deposits and reclaimed land
- (Medium-high) Alluvial sand, silt, and gravel
- (Medium-low) Compact alluvial sand, silt, and gravel
- (Low) Bedrock / Regolith
- Faultlines
- Fault Avoidance Zones

**DISCLAIMER:** The Hastings District Council cannot guarantee that the data shown on this map is 100% accurate.

# Liquefaction Vulnerability

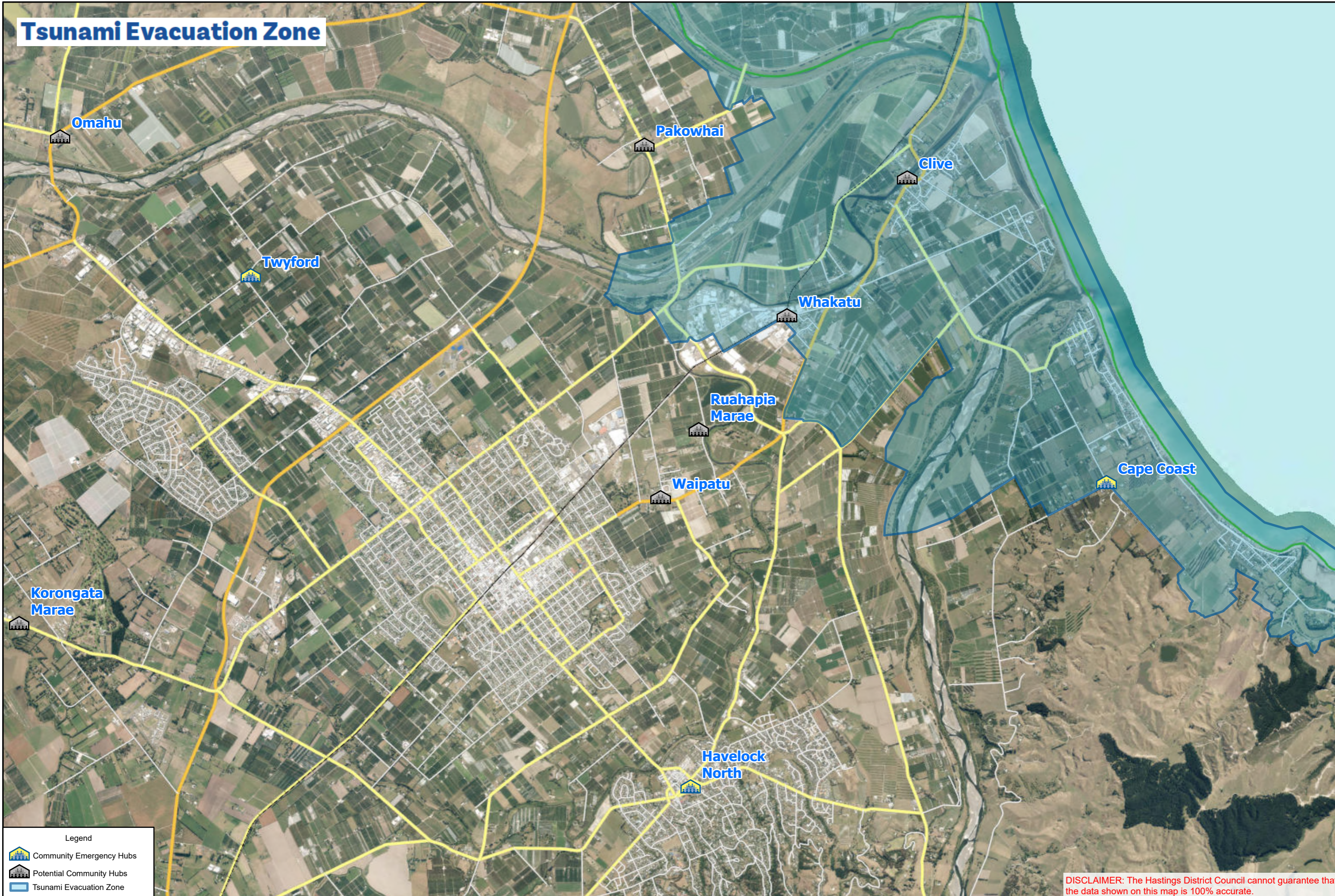


**Legend**

- Community Emergency Hubs
- Potential Community Hubs
- Liquefaction Vulnerability**
- High
- Medium
- Unlikely

**DISCLAIMER:** The Hastings District Council cannot guarantee that the data shown on this map is 100% accurate.

# Tsunami Evacuation Zone

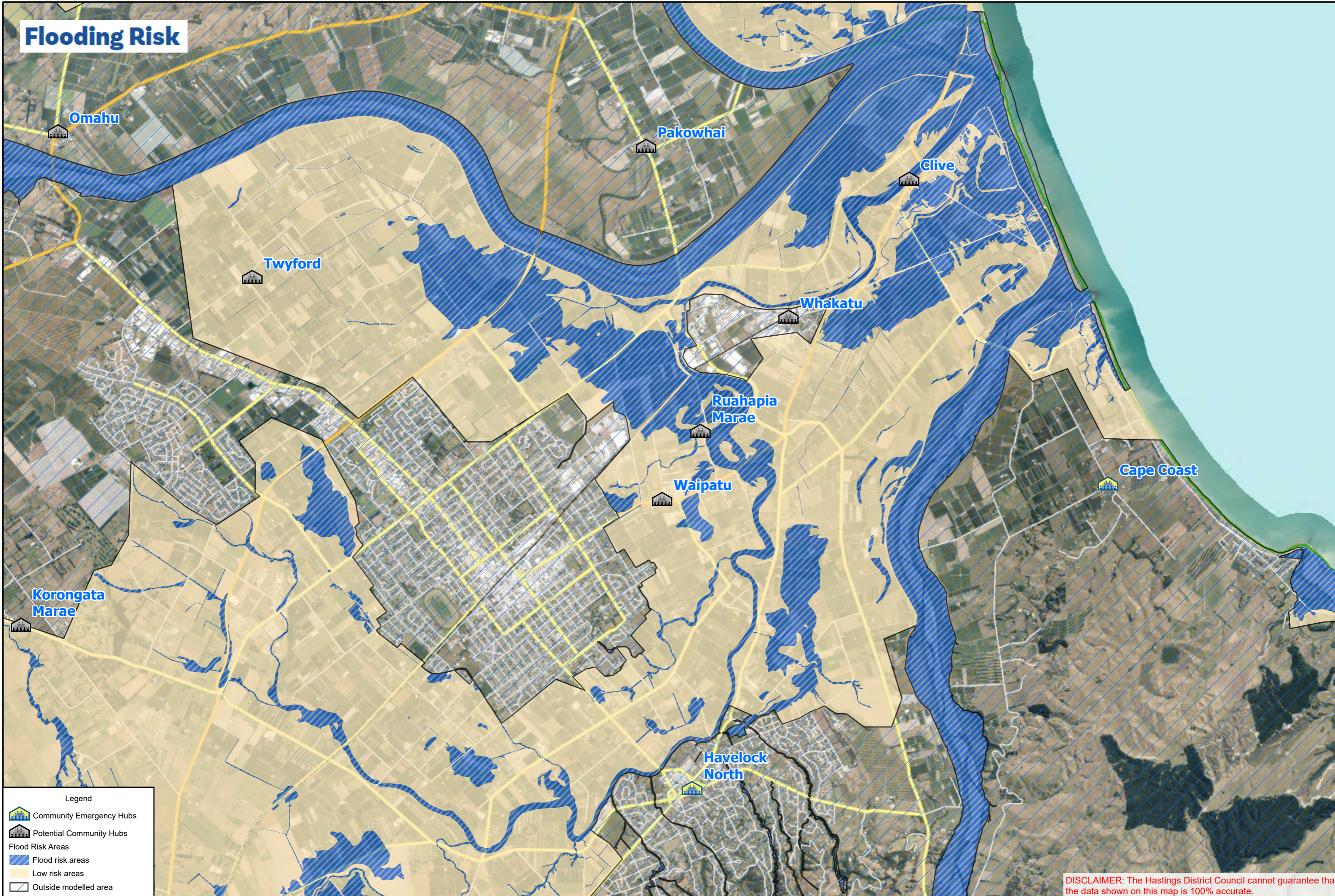


**Legend**

- Community Emergency Hubs
- Potential Community Hubs
- Tsunami Evacuation Zone

**DISCLAIMER:** The Hastings District Council cannot guarantee that the data shown on this map is 100% accurate.

# Flooding Risk



**Legend**

- Community Emergency Hubs
- Potential Community Hubs
- Flood Risk Areas**
- Flood risk areas
- Low risk areas
- Outside modelled area

**DISCLAIMER:** The Hastings District Council cannot guarantee that the data shown on this map is 100% accurate.

## VULNERABILITIES & VALUED STRENGTHS

	VULNERABILITIES	STRENGTHS
<b>Social / Cultural</b>	<ul style="list-style-type: none"> <li>○ Kaumatua with health vulnerabilities.</li> <li>○ Young children potentially isolated in the Kohanga following an event.</li> <li>○ Medically dependent people potentially unable to receive prescriptions or access healthcare during an event.</li> </ul>	<ul style="list-style-type: none"> <li>○ Skills in the community, including:               <ul style="list-style-type: none"> <li>➤ Medical professionals / first aiders</li> <li>➤ Teachers</li> <li>➤ Iwi leaders</li> <li>➤ Police</li> <li>➤ Builders</li> <li>➤ Electricians</li> <li>➤ Plumbers</li> <li>➤ Butchers</li> <li>➤ Gatherers</li> <li>➤ Digger drivers</li> </ul> </li> <li>○ Strong community networks.</li> <li>○ Extensive local knowledge of area.</li> <li>○ Sports teams.</li> <li>○ Access to machinery.</li> <li>○ Connections with wider Marae networks, including Ruahapia and Waiohiki Marae.</li> <li>○ Ample food and supplies available at Waipatu Marae.</li> </ul>
<b>Built</b>	<ul style="list-style-type: none"> <li>○ Bore water supply (most have pumps).</li> <li>○ Septic system requires maintenance.</li> <li>○ Hazardous substance spills possible from nearby industrial area.</li> <li>○ Karamu Stream bridge may be damaged during an event.</li> <li>○ Nearby industry could contaminate land if damaged during event.</li> </ul>	<ul style="list-style-type: none"> <li>○ Tomoana Showgrounds.</li> <li>○ Marae buildings, including Kohanga, Church, hall and Marae proper.</li> <li>○ Tamatea Rugby Club.</li> <li>○ Waipatu and Ruahapia Marae can operate as Hubs during a response. Waipatu Marae can also be stood up as a community led centre to provide welfare support.</li> <li>○ Town amenities nearby, including supermarket, hospital, etc.</li> </ul>
<b>Economic</b>	<ul style="list-style-type: none"> <li>○ Agriculture &amp; Viticulture vulnerable to extreme weather.</li> </ul>	<ul style="list-style-type: none"> <li>○ Tomoana Showgrounds</li> <li>○ Access to fuel and other supplies in Hastings &amp; Havelock North.</li> </ul>
<b>Natural</b>	<ul style="list-style-type: none"> <li>○ Liquefaction risk.</li> <li>○ Area vulnerable to flooding from Karamu stream.</li> <li>○ Land composition increases amplification of earthquakes.</li> </ul>	<ul style="list-style-type: none"> <li>○ Aunty's Garden can provide fresh produce.</li> <li>○ Local farmers/growers to support with food.</li> </ul>

# COMMUNITY RESOURCES



**Our community is the best source of resources to help each other.**

**What are the items, skills, people, and places we can identify within our community to use?**

<b>RESOURCES &amp; CAPABILITY</b>	
<b>Places &amp; Spaces</b>	<ul style="list-style-type: none"> <li>• Waipatu Marae as a Community Emergency Hub [71 State Highway 2, Hastings 4172 - GPS Coordinates -39.629636, 176.872673].               <ul style="list-style-type: none"> <li>○ Commercial kitchen</li> <li>○ Emergency relief containers (kai, shelter, lodging, cooking)</li> <li>○ 6 meeting spaces (Church &amp; Kohanga Reo included)</li> <li>○ BBQ trailer with gas supplies</li> </ul> </li> <li>• Te Kura Kaupapa - Whare Tapere</li> <li>• Hiki ki te rangi warehouse - Karamu Road.</li> <li>• Apatu farms</li> <li>• Mamia</li> <li>• HRS - Sports fields - Elwood Road.</li> <li>• Ruahapia Marae</li> <li>• Tomoana showgrounds</li> <li>• Motels</li> <li>• Clubroom accommodation</li> </ul>
<b>Infrastructure</b>	<p><b>Waipatu Marae</b></p> <ul style="list-style-type: none"> <li>• Septic tanks</li> <li>• Bore water systems</li> <li>• Off the grid systems</li> <li>• Kohanga Reo</li> <li>• Church</li> </ul> <p><b>Waipatu</b></p> <ul style="list-style-type: none"> <li>• Tomoana showgrounds</li> <li>• Elwood Park / Hastings Rugby Club</li> <li>• Local orchards</li> <li>• Watties Plant</li> <li>• Ruahapia Marae</li> </ul>
<b>Networks &amp; Groups of People</b>	<ul style="list-style-type: none"> <li>• Kaumatua guidance - local knowledge</li> <li>• National and regional Marae networks</li> <li>• Te Puni Kokiri</li> <li>• Marae committee - Ruahapia, Kohupātiki, Matahiwi</li> <li>• Intergenerational relationships</li> <li>• Te Whare Tapere Kura Kaupapa / Mangateretere</li> <li>• Waipatu Facebook Page</li> </ul>
<b>Services in our Community</b>	<ul style="list-style-type: none"> <li>• Te Whatu Ora</li> <li>• Mamia</li> <li>• Laser Electrical</li> <li>• Wairua Plumbing</li> </ul>

## POTENTIAL IMPACTS & RESPONSES

IMPACT	HAZARD	RESPONSES
<b>Need to evacuate</b>	Tsunami, Storm/Flood, Fire, Volcanic Ash, Landslide	<ul style="list-style-type: none"> <li>• Grab bags prepared.</li> <li>• House/building security.</li> <li>• Community Emergency Hub location with basic supplies and communications.</li> </ul>
<b>Stuck at home</b>	Earthquake, Storm/Flood, Volcanic Ash, Pandemic, Landslide	<ul style="list-style-type: none"> <li>• Households have additional food, water &amp; medication supplies.</li> <li>• Connect through the Neighbourhood Support network.</li> <li>• Community Emergency Hub with communications.</li> </ul>
<b>Can't get home</b>	Earthquake, Tsunami, Storm/Flood, Fire, Volcanic Ash, Landslide	<ul style="list-style-type: none"> <li>• Pre-arranged plans including meeting points.</li> <li>• Communication through Community Emergency Hub network.</li> </ul>
<b>Injuries/ medical needs</b>	All	<ul style="list-style-type: none"> <li>• Households with trained first aiders and first aid supplies. First aid kit in Marae.</li> <li>• AED Hastings Showgrounds, Lions Book Shop.</li> </ul>
<b>No water</b>	Earthquake, Tsunami, Storm/Flood, Fire, Volcanic Ash.	<ul style="list-style-type: none"> <li>• Household water tanks.</li> <li>• Household stores of bottled water.</li> <li>• River water (requires boiling).</li> </ul>
<b>No electricity</b>	Earthquake, Tsunami, Storm/Flood, Fire, Landslide	<ul style="list-style-type: none"> <li>• Petrol supply from nearest petrol stations such as Hastings or Clive.</li> </ul>
<b>No communications (phone or internet)</b>	Earthquake, Tsunami, Storm/Flood, Fire, Volcanic Ash	<ul style="list-style-type: none"> <li>• Starlink.</li> </ul>
<b>Loss of road access</b>	Earthquake, Tsunami, Storm/Flood, Fire, Volcanic Ash, Landslide	<ul style="list-style-type: none"> <li>• Farm machinery available to restore road access.</li> </ul>

## RESILIENCE TOOLS

TOOLS		STATUS
1.	Personal preparedness enablers: Household Plan, and Grab & Go Bags.	In Progress
2.	Community resilience & hub training, including lanyards roles.	In Progress
3.	Community events – Street events, Marae drop-in days, Container open days	In Progress
4.	Social media: Waipatu Panui page.	Active
5.	Regular hub co-ordinator get-togethers.	Quarterly

# STAY?

ME NOHO?

## SHELTER IN PLACE

Me Noho Ki Taua Wāhi



### Our hazard decision path



#### Earthquake • He Rū

Our FIRST response:



Our SECOND response:

Was that long? (more than a minute)  
Was that strong? (hard to stand up)

NO

YES



#### Tsunami • He Ngaru Taitoko

Are we in a tsunami zone?

NO

YES



#### Flood • He Waipuke

Are we in a flood zone?

Are we in danger from rising water?

NO

YES



#### Fire • He Kāpura

Go to agreed assembly area



#### Volcanic ash He Pungarehu Puia



#### Hazardous substance Ngā Matū Pūmate

# OR GO?

ME HAERE RĀNEI?



Take the designated route to our safe location.

## EVACUATE

Me Haere



## IN AN EMERGENCY YOU WILL NEED:



### AN EMERGENCY PLAN

Make a plan for your household, whānau and pets to get through an emergency, consider;

- Where will you meet or evacuate to?
  - How will you look after each other?
  - Who might need our help?
  - Who will we need to contact?
  - What will we do if we are stuck at home?
  - What will we do if we have no power, no water, no way to get information?
- 



### EMERGENCY SUPPLIES

You don't have to have them all in one place, but you might have to find them in a hurry and/or in the dark, store:

- Three litres of water per person per day.
  - First aid kit.
  - Long-lasting food that doesn't need cooking, or a way to safely cook or heat food without electricity, and extra fuel.
  - Consider also specific food needs of babies, children and pets.
  - Torch.
  - Emergency cash.
  - Half a tank of fuel in your vehicle.
  - Toilet paper and large plastic buckets for an emergency toilet.
  - Work gloves and a properly fitted mask.
- 



### EMERGENCY GRAB BAG

Pack your emergency grab bag with basic supplies including:

- Walking shoes, warm clothes, raincoat, and hat.
  - Water and snack food (remember babies and pets too).
  - Hand sanitizer & face mask.
  - Portable phone charger.
  - Cash.
  - Copies of important documents and Photo ID.
  - Medication.
  - Small first aid kit.
- 

**Remember your grab bag should be light enough that you can still carry it.**

---

# APPENDIX A: INTERNAL & EXTERNAL COMMUNICATION

## Communication: Internal

The following table lists the different methods the community can use to communicate with each other:

AREA/GROUP		NEED/ISSUE	APPROACH
1.	Waipatu	Welfare checks on people in the community.	Social media (Waipatu Panui Page) Driving messengers Door knocking Phone tree/Directory
2.	Waipatu Marae	Organising response.	Daily debriefs cover: <ul style="list-style-type: none"> <li>• Rostering</li> <li>• To dos</li> <li>• Needs review</li> </ul>
3.	Waipatu Marae	Sharing information.	Kumara Vine Signage/Whiteboards at Marae Phone tree Social media (Waipatu Panui Page) Driving messengers

# APPENDIX A: INTERNAL & EXTERNAL COMMUNICATION

## Communication: Emergency Agencies

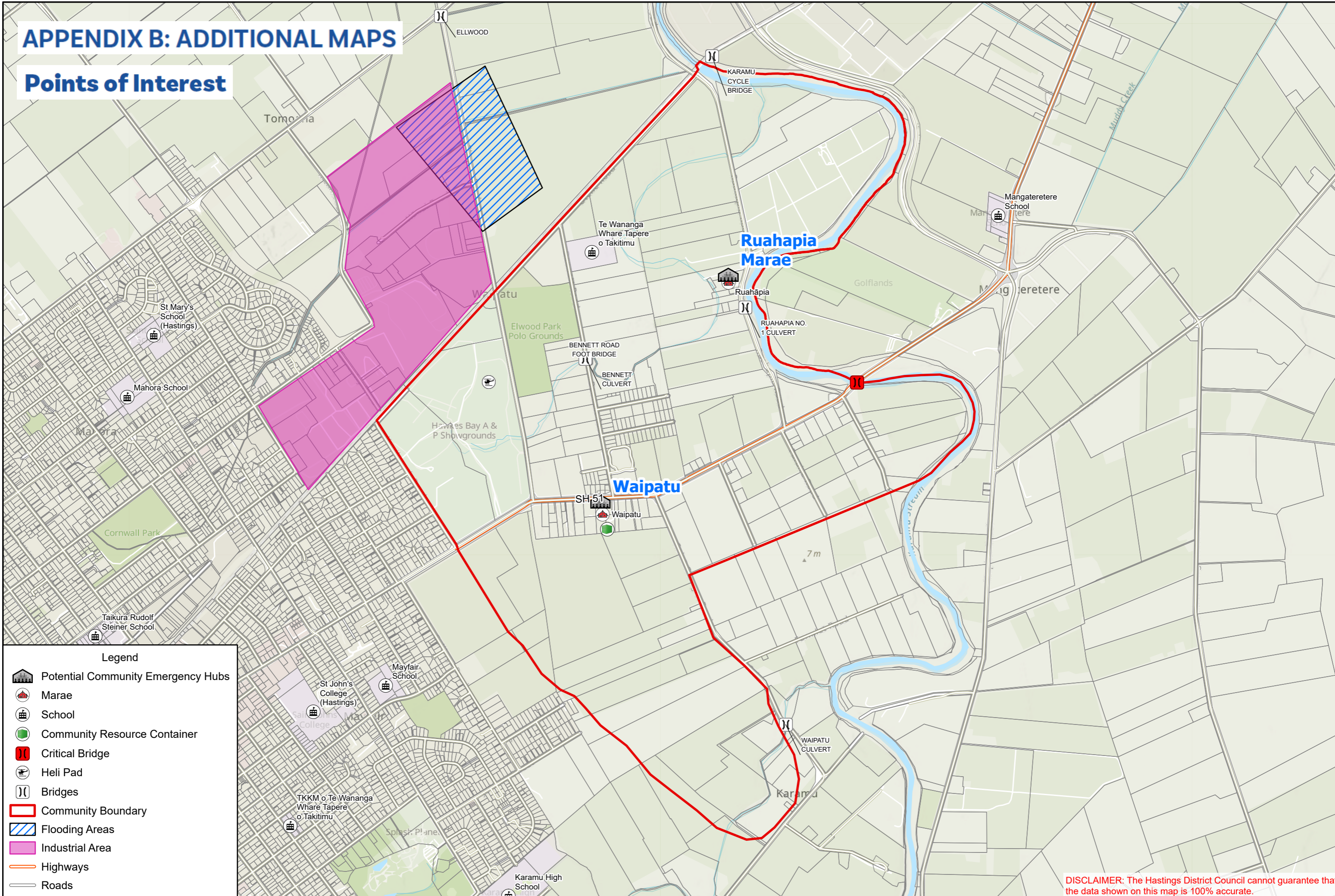
The following table lists the contact details for Emergency Agencies:

Monitor the following sources of information to stay informed:  
**Television | Radio** [Frequencies: 90.3FM, 89.5FM, 97.5FM, 94.5FM]  
**Online Websites & Social Media** (Official & Community Pages)  
**IMPORTANT:** Call **111** for all urgent or emergency situations.

AGENCY	NEED/ISSUE	CONTACT/SOURCES OF INFORMATION
<b>Police</b>	Risk to people or property	Urgent: Call 111 OR Non-urgent: Call 105 or online
<b>Fire &amp; Emergency New Zealand (FENZ)</b>	Risk to people or property	Call 111
<b>Ambulance (St John)</b>	Risk to people	Call 111
<b>Hawke's Bay Emergency Management Office</b>	Warnings, alerts, advice and key information before, during and after an emergency.	Online: <a href="https://www.hbemergency.govt.nz/">https://www.hbemergency.govt.nz/</a> OR Facebook – HB Civil Defence Emergency Management Group.
<b>MetService</b>	Severe weather warnings, alerts.	Online <a href="https://www.metservice.com/warnings/home">https://www.metservice.com/warnings/home</a>
<b>Hastings District Council</b>	Status of: <ul style="list-style-type: none"> <li>local roads (i.e. not state highways)</li> <li>Urban water supply</li> <li>Urban wastewater (sewerage).</li> <li>Solid waste/rubbish collection and disposal.</li> </ul>	Call (06) 871 5000 (24/7) OR Email: <a href="mailto:customerservice@hdc.govt.nz">customerservice@hdc.govt.nz</a> (Monday to Friday 9am – 5pm)  Facebook - Hastings District Council - Te Kaunihera ā-Rohe o Heretaunga  Road status: <a href="https://www.hastingsdc.govt.nz/services/roads-and-streets/road-works">https://www.hastingsdc.govt.nz/services/roads-and-streets/road-works</a>
<b>New Zealand Transport Agency (NZTA) / Waka Kotahi</b>	Status of State Highways	Call: 0800 4 HIGHWAYS or (0800 44 44 49)  Online: <a href="https://www.journeys.nzta.govt.nz/highway-conditions/">https://www.journeys.nzta.govt.nz/highway-conditions/</a> OR Facebook – NZ Transport Agency Waka Kotahi – Hawke's Bay & Gisborne
<b>Unison Networks</b>	Status of power supply	Call 0800 2 UNISON or 0800 2 86476 OR Online <a href="https://www.unison.co.nz/outages/">https://www.unison.co.nz/outages/</a>
<b>Hawke's Bay Regional Council (HBRC)</b>	Status of: <ul style="list-style-type: none"> <li>Rainfall.</li> <li>River levels and flows.</li> <li>Flood control and drainage.</li> <li>Air quality.</li> </ul>	Call (06) 835 9200 (24/7) OR 0800 108 838 OR Email: <a href="mailto:info@hbrc.govt.nz">info@hbrc.govt.nz</a> (Monday to Friday 8am – 5pm) OR Facebook – Hawke's Bay Regional Council

# APPENDIX B: ADDITIONAL MAPS

## Points of Interest

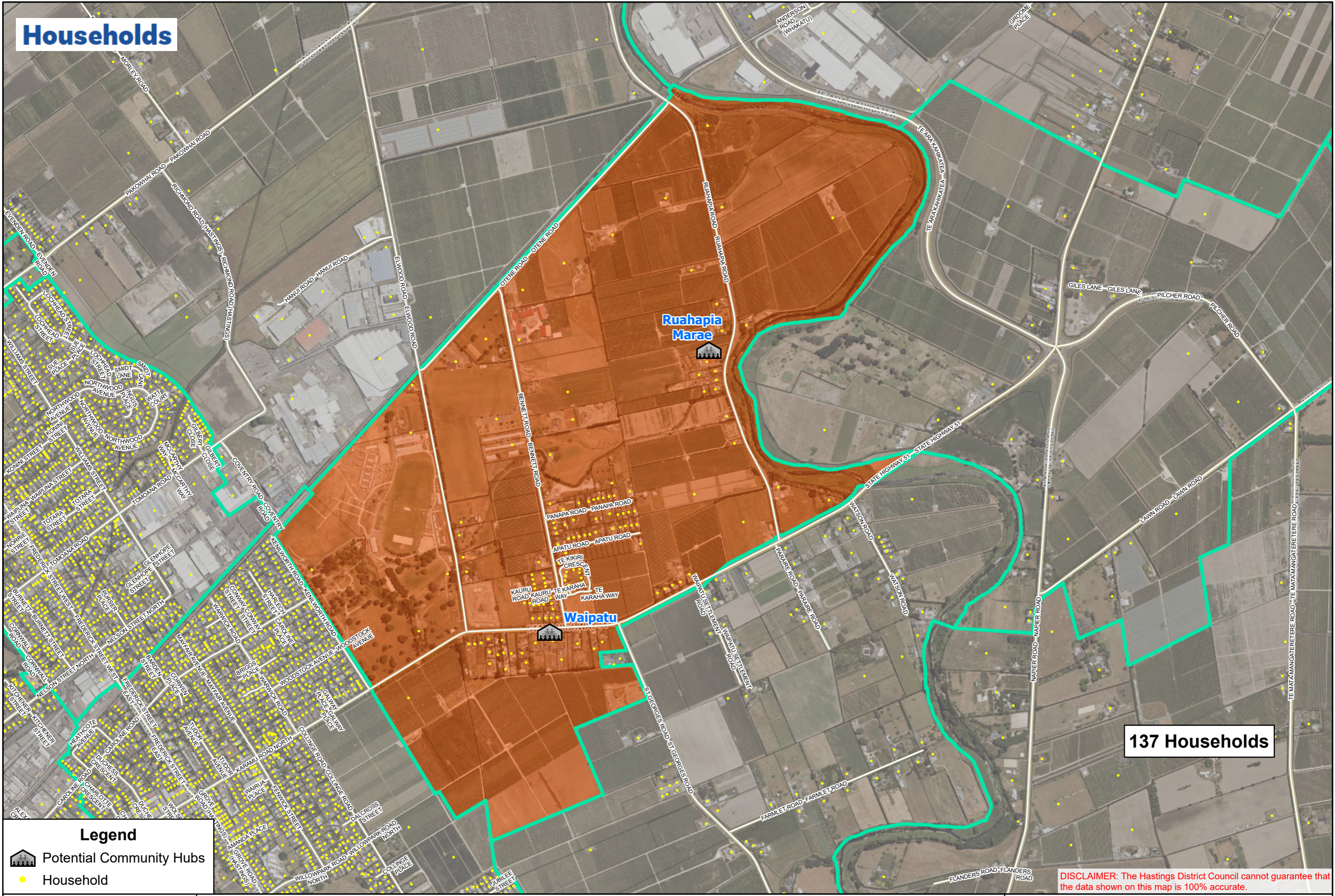


**Legend**

- Potential Community Emergency Hubs
- Marae
- School
- Community Resource Container
- Critical Bridge
- Heli Pad
- Bridges
- Community Boundary
- Flooding Areas
- Industrial Area
- Highways
- Roads

DISCLAIMER: The Hastings District Council cannot guarantee that the data shown on this map is 100% accurate.

# Households



137 Households

**Legend**

- Potential Community Hubs
- Household

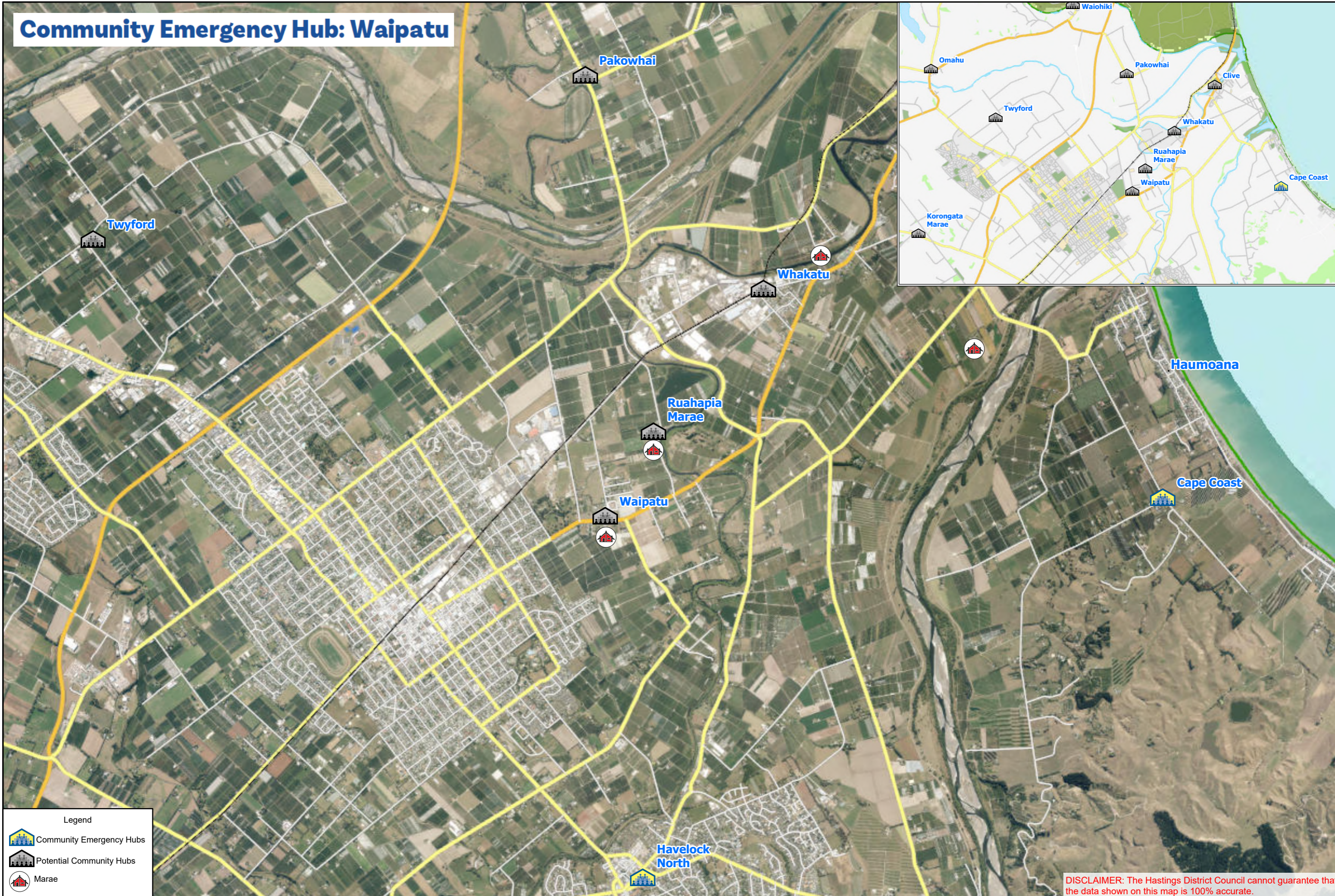
## Number of Households in Waipatu

**DISCLAIMER:** The Hastings District Council cannot guarantee that the data shown on this map is 100% accurate.

Produced by: andrec

Households\_Map\_Waipatu

# Community Emergency Hub: Waipatu



**Legend**

- Community Emergency Hubs
- Potential Community Hubs
- Marae

**DISCLAIMER:** The Hastings District Council cannot guarantee that the data shown on this map is 100% accurate.

Produced by: andrec

Emergency\_Hub\_Waipatu