



HE MAHERE OHOTATA MŌ
TE HAPORI

Tutira Area

(Waikoau - Tutira - Putorino)

Community Resilience Plan

**HERETAUNGA
HASTINGS** DISTRICT COUNCIL

hbemergency.govt.nz



HAWKE'S BAY
EMERGENCY MANAGEMENT

GROUP

Date: 16 June 2025 Version: 2.0 Approved by:

Emergency Readiness & Business Continuity Advisor

RĀRANGI TAKE

Contents

Kupu arataki

INTRODUCTION	1
What to do during and after an emergency	4
What hazards do we have?	6
Hazard profiles & maps	10
Strengths & vulnerabilities	11
Community resources & capability	13
Potential impacts & responses	15
Resilience tools	16
In an emergency you will need	18
Appendices & resources	19

KUPU ARATAKI

INTRODUCTION

The purpose of this Community Resilience Plan is to help our community to ensure measures are in place to help us look after each other before, during, and after an emergency.

This writing and information within this plan comes from our community.



Description of our community

The communities of Waikoau, Tutira, and Putorino are located in the northern part of the Hastings District and are closely connected due to their close geographic proximity and common hazards. Farming and forestry are the predominant land uses in the area.

The profile of these communities has changed from traditional farming communities with long standing families where most people knew their neighbours, to more diverse communities where a reasonable proportion (up to 50% in some areas) of the residents are now owning individual houses (not lifestyle blocks) and working in town (Napier and Hastings). Those that live here like the rural character and lifestyle including the wide variety of recreational opportunities associated with the rivers, lakes, and mountains. There are estimated to be about 400 people living between the Devil's Elbow and the Waikare bridge, who are spread across a wide geographic area.

Roading infrastructure, especially bridges and culverts are important to the livelihoods of these communities.

He waka eke noa
We are all working together

This community includes the following areas:

- State Highway 2, from south of Devil's Elbow, and ending just north of the Waikare Community at the transition to the Wairoa District.
- Properties along:
 - Waikoau Road
 - Mokamoka Road
 - Ridgemount Road and Kahika Road
 - Matahorua Road, Waitara Road and Pohokura Road, including side roads
 - Sandy Creek Road
 - Waikare Road, including side roads
- Bounded to the East by the Pacific Ocean
- Bounded to the West by the Mohaka River

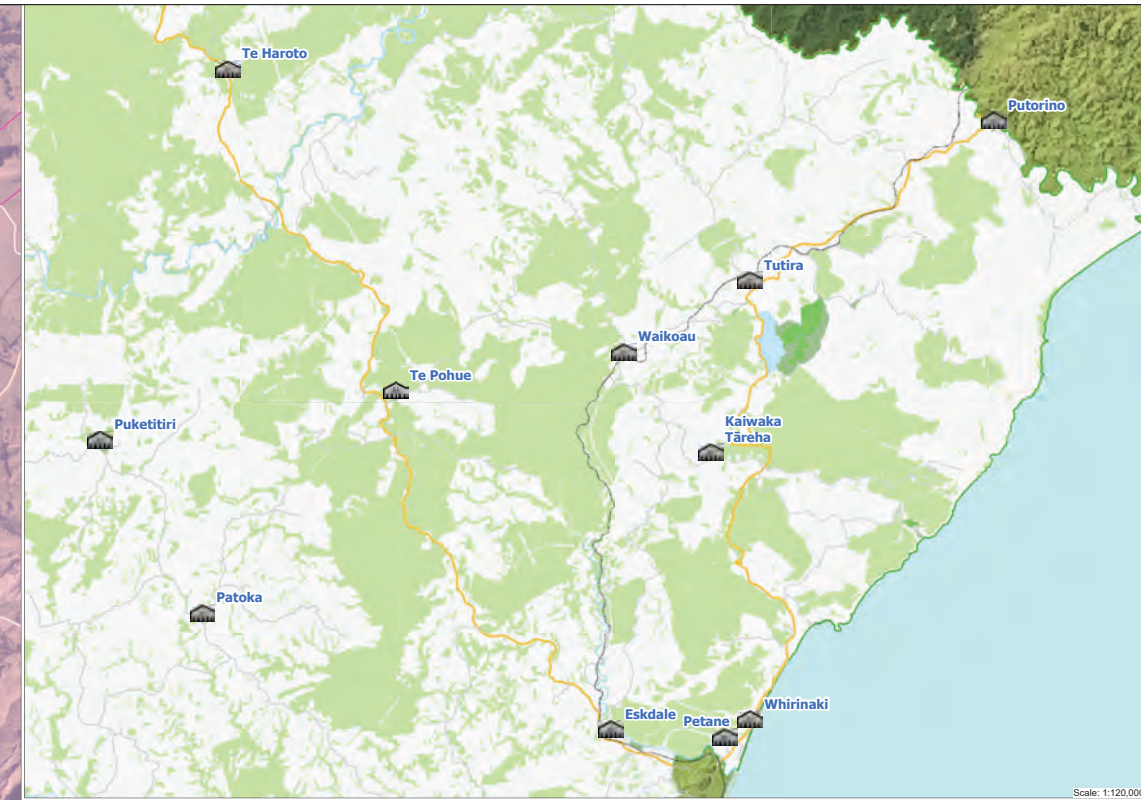
Plan Principles

This plan is based on the following key principles:

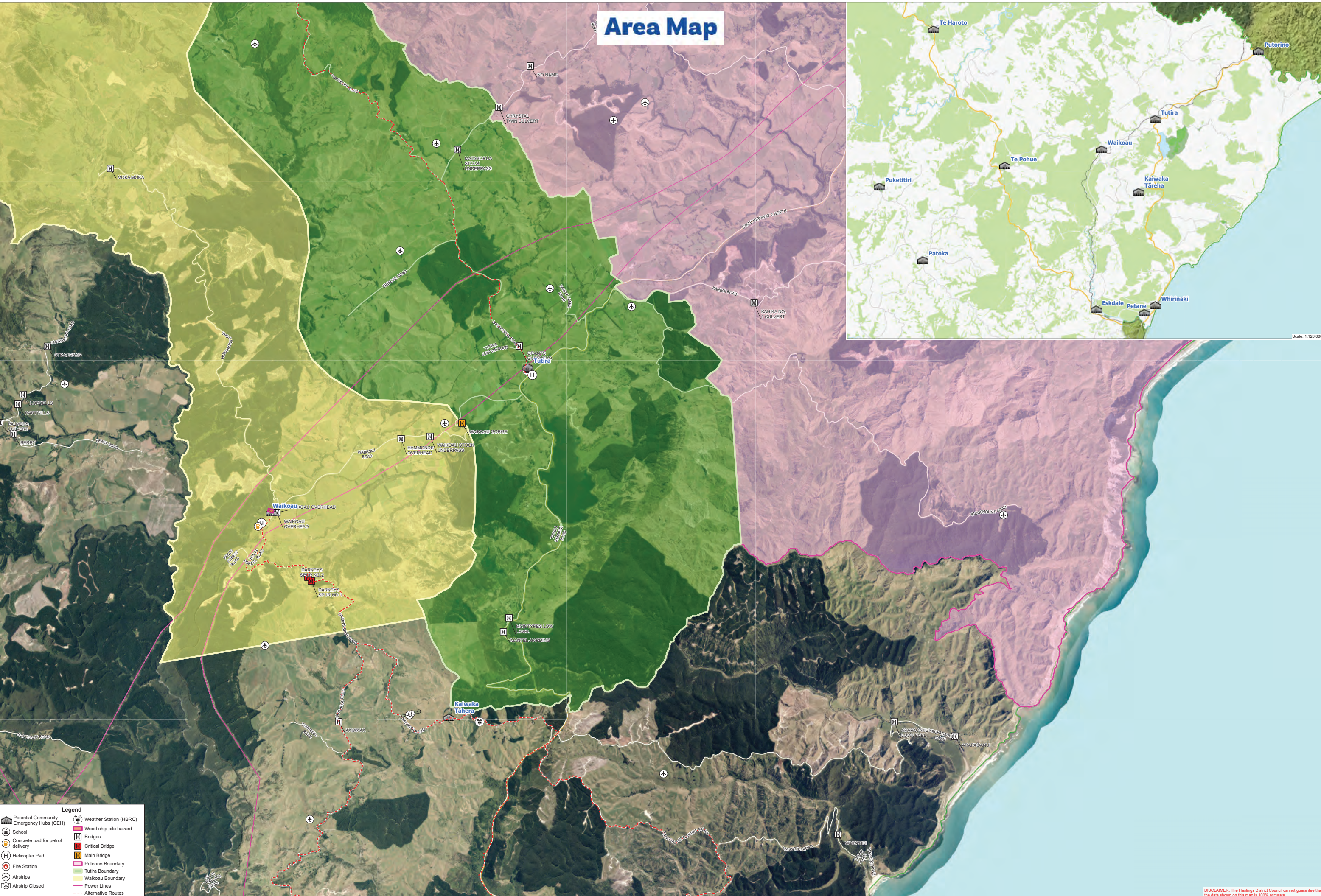
- Life safety is paramount, and all actions should aim to achieve this outcome.
- The community is prepared to:
 - Self-evacuate as early as possible, or
 - Be self-sufficient for at least 14 days.
- Community support will be coordinated through three Community Emergency Hubs, at Tutira, Putorino, and Waikoau.

He waka eke noa
We are all working together

Area Map



Scale: 1:120,000



Legend	
	Potential Community Emergency Hubs (CEH)
	School
	Concrete pad for petrol delivery
	Helicopter Pad
	Fire Station
	Airstrips
	Airstrip Closed
	Weather Station (HBRC)
	Wood chip pile hazard
	Bridges
	Critical Bridge
	Main Bridge
	Putorino Boundary
	Tutira Boundary
	Waikoau Boundary
	Power Lines
	Alternative Routes

DISCLAIMER: The Hastings District Council cannot guarantee that the data shown on this map is 100% accurate.

I TE WĀ O TE OHOTATA

WHAT TO DO DURING AND AFTER AN EMERGENCY



STEP 1

Try to stay calm, check yourself and others in your household for injuries, for minor injuries provide first aid, then assess your home for damage.

Is everything ok?

NO



STEP 2

If you or anyone in your household have significant injuries call **111 immediately**.
If your home is not safe, **evacuate immediately and call 111**.

YES



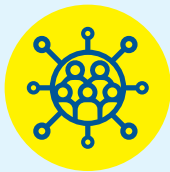
STEP 3

Check on your immediate neighbours. Assess your surroundings for damage, check on your street & neighbourhood.

If safe to proceed go to STEP 4



A place for your community to gather and help each other out during an emergency.



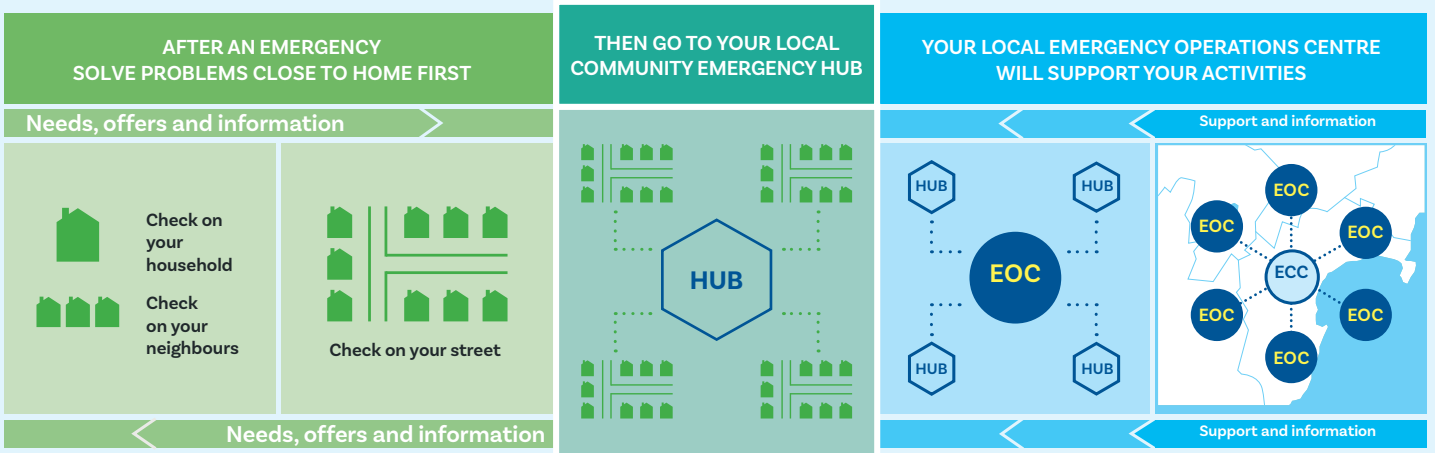
STEP 4

Go to your local Community Emergency Hub.

The Hub is a designated place where your community can gather, connect with one another, and solve problems using the skills and resources which already exist among your community.

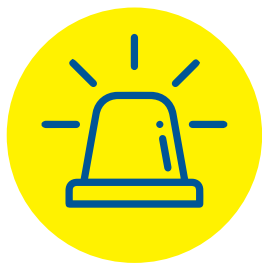
Community Emergency Hubs are a place for people to work together to solve problems locally while still coordinating with councils about big problems.

See pages 23 to 25 for maps of your local Hub locations.






During an emergency, councils will stand up an Emergency Operations Centre (EOC) to respond. The EOC will give support and information back into the community, and give information to the regional Emergency Coordination Centre (ECC).




WHAT HAZARDS DO WE HAVE?



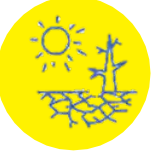






Below is a list of the Hazards that could cause an emergency in our community. More information on these hazards, and what you can do before, during and after an emergency, can be found on the HB Emergency Website (www.hbemergency.govt.nz).

These Hazards, perceived likelihood and impact, warning type, and immediate actions were decided with the community.

HAZARD (perceived likelihood & impact)	WARNING & ACTIONS	IMPACTS
 <p>1. Critical Infrastructure Failure (roads, bridges & power)</p>	<p>Warning - Unplanned loss of service. Hawke's Bay Emergency Management Office (EMO), HDC, HBRC, NZTA and Unison websites, and social media.</p> <p>Actions:</p> <ul style="list-style-type: none"> • Shelter in place. • Check on neighbours and friends in the area. 	<ul style="list-style-type: none"> • Restrictions to the areas people can access. • May cause distress or health issues for people
 <p>2. Wildfire (Forestry)</p>	<p>Warning - Natural (Smoke). FENZ warning.</p> <p>Actions:</p> <ul style="list-style-type: none"> • Evacuate to an unaffected area. • Preferably stay with friends or family out of the hazardous area. 	<ul style="list-style-type: none"> • Damage to buildings. • Restrictions to the areas people can access. • Impact on infrastructure, services, and commercial actions.
 <p>3. Storm, Flood and Severe Weather</p>	<p>Warning - MetService warning, information disseminated by HB EMO and council.</p> <p>Actions:</p> <ul style="list-style-type: none"> • Self-evacuate to high ground if you see floodwater rising. • Do not wait for an official warning. • Preferably stay with friends or family out of the hazardous area. 	<ul style="list-style-type: none"> • Flooding, coastal inundation and landslides. • Damage from high wind. • Loss of electricity. • Evacuation of flood zones. • Isolated communities.

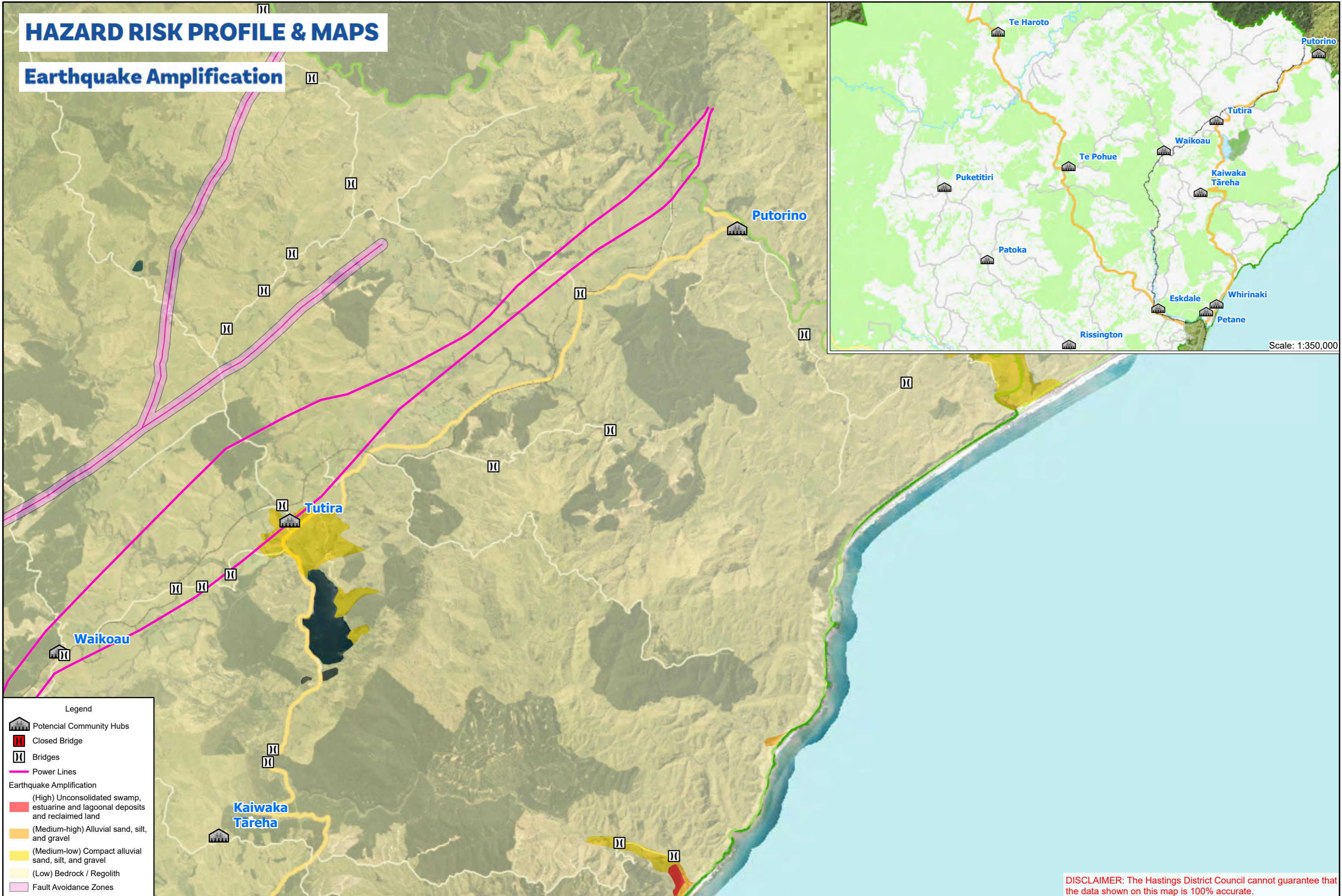
HAZARD (perceived likelihood & impact)	WARNING & ACTIONS	IMPACTS
 <p>4. Volcanic Ashfall</p>	<p>Warning - Warning through GeoNet, HB EMO and council.</p> <p>Actions:</p> <ul style="list-style-type: none"> • Shelter in place. • Disconnect downpipes to tank water. • Seal windows and doors. • DO NOT use vehicles or machinery until ashfall stops. 	<ul style="list-style-type: none"> • Damage to crops. • Health impacts and difficulty breathing if ash is inhaled. • Disruption to electricity, communications, and services. • Damage to vehicles, routes, and houses.
 <p>5. Earthquake</p>	<p>Warning - Earthquakes are rapid onset events and occur without warning.</p> <p>Actions:</p> <ul style="list-style-type: none"> • Drop, Cover, Hold, including during following aftershocks. 	<ul style="list-style-type: none"> • Damage to buildings, roads and bridges. • Loss of water, electricity, and communication. • Isolation and cut off communities.
 <p>6. Major Vehicle Accident</p>	<p>Warning - No prior warning as spontaneous event. Signs include traffic build up, sounds including impact sounds and emergency sirens, smoke may be visible. NZTA and Police will advise of road closure via various avenues.</p> <p>Actions:</p> <ul style="list-style-type: none"> • If able, provide first aid support to injured people prior to the arrival of emergency services. • If an extended road closure is possible, consider providing welfare support to trapped motorists (eg water, snacks, toilet access, etc). • Communicate with HDC around the situation and any welfare support requirements for trapped motorists. 	<ul style="list-style-type: none"> • Injuries or deaths. • Damage to critical infrastructure, such as bridges, roads and guardrails, power. • Motorists unable to proceed to their destination. • Welfare impacts on travellers unable to proceed in an extended road closure: <ul style="list-style-type: none"> ○ Lack of food and water ○ Lack of toileting facilities ○ Lack of adequate shelter from the elements, including warmth or coolness ○ Distress

HAZARD (perceived likelihood & impact)	WARNING & ACTIONS	IMPACTS
 <p>7. Structural Fire</p>	<p>Warning - Natural (smoke, visible fire). FENZ warning.</p> <p>Actions:</p> <ul style="list-style-type: none"> • Evacuate to an unaffected area. • Preferably stay with friends or family out of the hazardous area. 	<ul style="list-style-type: none"> • Damage to buildings. • Restrictions to the areas people can access. • Impact on infrastructure, services, and commercial activities.
 <p>8. Biosecurity (animal & plant diseases / pests)</p>	<p>Warning - National notification (MPI)</p> <p>Actions:</p> <ul style="list-style-type: none"> • Surveillance programmes for pests and diseases to contain the outbreak. 	<ul style="list-style-type: none"> • Impact to native/indigenous species. • Impacts on agricultural businesses and communities.
 <p>9. Drought</p>	<p>Warning - Natural (extended dry period). MetService warning. MPI Notification.</p> <p>Actions:</p> <ul style="list-style-type: none"> • Drink plenty of water, provide water freely for animals. • High fire risk - do not do any activity which could create sparks or flames. 	<ul style="list-style-type: none"> • Impact to animals, plants, and ecosystems. • Impacts on agricultural businesses and communities.
 <p>10. Landslide</p>	<p>Warning - Landslides can happen without warning but may be triggered by other hazards.</p> <p>Actions:</p> <ul style="list-style-type: none"> • Evacuate to an unaffected area. • Preferably stay with friends or family out of the hazardous area. 	<ul style="list-style-type: none"> • Blocked access to roads and properties. • Damaged critical infrastructure. • Further landslides may occur.

HAZARD (perceived likelihood & impact)	WARNING & ACTIONS	IMPACTS
 <p>11. Hazardous Substances</p>	<p>Warning - FENZ warning.</p> <p>Actions:</p> <ul style="list-style-type: none"> • Evacuate the immediate area. • Call 111 for assistance. • Identify the substance if safe to do so. 	<ul style="list-style-type: none"> • Contamination of land. • Poisoning of people and animals. • Damage to crops. • Evacuation of affected areas.
 <p>12. Human Pandemic</p>	<p>Warning - Te Whatu Ora / Health NZ warning. Information shared by HB EMO and council.</p> <p>Actions:</p> <ul style="list-style-type: none"> • Stay home if you are unwell. • Use hygiene measures including washing hands and using masks. 	<ul style="list-style-type: none"> • Widespread illness. • Schools, businesses, and community spaces shut and/or face disruption of services.
 <p>13. Tsunami</p>	<p>Warning - A long or strong earthquake, unusual changes to sea level, strange noises from the sea.</p> <p>Actions:</p> <ul style="list-style-type: none"> • Communities from coastal areas will evacuate to higher ground. 	<ul style="list-style-type: none"> • Inundation of coastal areas. • Strain on inland community resources. • Large scale displacement. • Loss of water, electricity and communications. • Liquefaction (from a near-source earthquake). • Economic impacts.

HAZARD RISK PROFILE & MAPS

Earthquake Amplification



Legend

- Potential Community Hubs
- Closed Bridge
- Bridges
- Power Lines

Earthquake Amplification

- (High) Unconsolidated swamp, estuarine and lagoonal deposits and reclaimed land
- (Medium-high) Alluvial sand, silt, and gravel
- (Medium-low) Compact alluvial sand, silt, and gravel
- (Low) Bedrock / Regolith
- Fault Avoidance Zones

DISCLAIMER: The Hastings District Council cannot guarantee that the data shown on this map is 100% accurate.

VULNERABILITIES & VALUED STRENGTHS

	VULNERABILITIES	STRENGTHS
Social / Cultural	<p>All Areas</p> <ul style="list-style-type: none"> ○ Low-income households & elderly people living alone. ○ People undertaking hospital treatments & people on C-Pap and O2 machines that require power. ○ Access to medication (prescriptions). <p>Waikoau</p> <ul style="list-style-type: none"> ○ The closest nurse is at Kaiwaka Tareha. ○ Approximately 70 people in town area. 	<p>All Areas</p> <ul style="list-style-type: none"> ○ Skills in the community, including: <ul style="list-style-type: none"> ➤ Trades (Builders, Electricians, Plumbers). ➤ Farmers. ➤ Teachers ➤ Contractors. ➤ Medical Professionals (Doctors, Nurses, Therapists). ○ The Fire & Emergency NZ (FENZ) station in Putorino covers all three communities. ○ Residents will have a minimum of a week's food supply. ○ Access to machinery, chainsaws, fuel supplies, and water tanks via farmers & contractors. <p>Putorino</p> <ul style="list-style-type: none"> ○ Due to close proximity to the Wairoa District, they can also receive support from the North and have connections with Kotemaori.
Built	<p>All Areas</p> <ul style="list-style-type: none"> ○ No permanent local petrol stations between Bayview and Wairoa. ○ No Marae in area. ○ Water supply. ○ Bridges, culverts, roads: <ul style="list-style-type: none"> ➤ SH 2 Waikare gorge subject to closure. ➤ SH 2 Mohaka Hill subject to closure. ➤ SH 2 Devil's Elbow subject to closure. ➤ Access to Moangiangi Station - slips and washouts. ➤ Access to Pohukura Road - slips and washouts. ➤ Access to Waikoau - slips and washouts in Aropaoanui Gorge, Waikoau Road. 	<p>All Areas</p> <ul style="list-style-type: none"> ○ Majority of houses have water tanks. ○ Various private generators. ○ Community Halls to serve as Community Emergency Hubs (CEHs). <p>Tutira</p> <ul style="list-style-type: none"> ○ Tap connection installed at water tank at the Tutira Community Hall for use by Fire Station if required for fire extinguishing purposes.

VULNERABILITIES & VALUED STRENGTHS

	VULNERABILITIES	STRENGTHS
Built	<ul style="list-style-type: none"> ➤ Access to Glenbrook - Very muddy and wet. 4WD and extra care required. ➤ Ridgemount and Kahika Roads - Road is damaged, extra care required <p>Waikoau</p> <ul style="list-style-type: none"> ○ The main bridge (Waikoau Gorge) is key transport link between Tutira & Waikoau, especially for the forestry companies. ○ Aropoanui River Gorge could close at any time. ○ Darky's Spur Road is closed. ○ Hall has very limited water supply. ○ Old wood chip landfill nearby. ○ The store in Tutira is their only nearby store (basically only milk). ○ Domestic water supplies are vulnerable with many needing to boil drinking water. 	
Economic	<p>All Areas</p> <ul style="list-style-type: none"> ○ Main productive activities: Farming & forestry. 	<p>All Areas</p> <ul style="list-style-type: none"> ○ Access to meat & vegetables.
Natural	<p>All Areas</p> <ul style="list-style-type: none"> ○ Water quality - untreated water. ○ Slips, dropouts and erosion. ○ Fallen trees - Take care in windy conditions. 	<p>All Areas</p> <ul style="list-style-type: none"> ○ Natural springs serve as alternative water supply.

COMMUNITY RESOURCES



Our community is the best source of resources to help each other.

What are the items, skills, people, and places we can identify within our community to use?

RESOURCES & CAPABILITY	
Places & Spaces	<p>All Areas</p> <ul style="list-style-type: none"> ○ There are airstrips on farms across the area for small planes to land and to drop-off supplies. ○ Community Halls to serve as Community Emergency Hubs. <p>Tutira</p> <ul style="list-style-type: none"> ○ Tutira School, 9 Matahorua Road, Tutira (CEH). [GPS Coordinates: -39.20320, 176.88165] ○ Tutira Community Hall, 3847 State Highway 2, Tutira 4181 (Alternative CEH). [GPS Coordinates: -39.20892, 176.88033] <p>Waikoau</p> <ul style="list-style-type: none"> ○ Waikoau Hall, 800 Waikoau Road, 4181 (CEH). [GPS Coordinates: -39.23466, 176.81759] ○ The open space near the Community Hall can be used to put up a marquee to shelter people. <p>Putorino</p> <ul style="list-style-type: none"> ○ Waikare Sports Complex, 12 Waikare Road, Putorino 4188 (CEH).[GPS Coordinates: -39.13415, 177.00525] ○ FENZ station.
Infrastructure	<p>All Areas</p> <ul style="list-style-type: none"> ○ Private generators and water supplies. ○ Various landing strips on farms (refer to Points of Interest map). ○ Helicopter landing site at Waikare Sports Complex. ○ AED Defibrillator: Waikoua Hall; Waikare Sport Centre & Fire Shed; Tutira Store & Guthrie-Smith Arboretum and Education Centre. <p>Waikoau</p> <ul style="list-style-type: none"> ○ 1 Starlink - Contact: Alex from FENZ. ○ 1x Generator at Community Hall. ○ Alternative access from Mokamoka Rd to Berry Rd crossing the Esk River. ○ 1 AED Defibrillator at the Community Hall. ○ 2 new water tanks at the Community Hall. ○ The main access bridge (Waikoau Gorge) is a key transport link for both the local community and the Forestry company. ○ Nearest local store: Tutira store. ○ Nearest supermarket: Wairoa or Bayview, Napier.

RESOURCES & CAPABILITY

<p>Networks & Groups of People</p>	<p>All Areas</p> <ul style="list-style-type: none"> ○ A lot of trades people live in the area (electricians, plumbers etc). <p>Waikoau</p> <ul style="list-style-type: none"> ○ Neighbourhood Support Network Group: In progress as at 1 Oct 2024 – to be confirmed. ○ Facebook Messenger Group: Includes everyone in the community. ○ Community Hall Committee: Incorporated Society in progress as at 1 Oct 2024 – to be confirmed. <p>Putorino</p> <ul style="list-style-type: none"> ○ FENZ volunteers. ○ Sports Club (Squash, etc.). ○ Hall & Complex Committees. ○ School Board & Kindy Board. ○ Iwi. ○ Farmers. <p>Tutira</p> <ul style="list-style-type: none"> ○ Hall Committee. ○ Tutira School and Kindergarten.
<p>Services in our Community</p>	<p>All Areas</p> <ul style="list-style-type: none"> ○ Residents with trades skills. ○ Farmers & contractors with diggers, tractors, bulldozers, bulk fuel supply and water tanks. ○ First Aid kit: CEHs/Community Halls. ○ AED Location: CEHs/Community Halls. ○ Residents with generators & Starlinks. ○ Off the grid properties. <p>Tutira</p> <ul style="list-style-type: none"> ○ Tutira Community Hall, 3847 State Highway 2, Tutira 4181 (CEH). ○ Tutira School, 9 Matahorua Road, Tutira. <p><u>Onsite facilities:</u></p> <ul style="list-style-type: none"> ○ Generator port in school office. ○ Helicopter Landing site ○ School Hall, Council radio. <p><u>Constraints:</u></p> <ul style="list-style-type: none"> ○ School is operating. ○ Generator required. <p>Waikoau</p> <ul style="list-style-type: none"> ○ Waikoau Hall, 800 Waikoau Road, 4181 (CEH). <p><u>Onsite facilities:</u></p> <ul style="list-style-type: none"> ○ Meeting and resupply site, helicopter landing. <p>Putorino</p> <ul style="list-style-type: none"> ○ Waikare Sports Complex, 12 Waikare Road, Putorino 4188 (CEH). <p><u>Onsite facilities:</u></p> <ul style="list-style-type: none"> ○ FENZ fire station and Putorino School. ○ Helicopter landing site. ○ Kitchen, ablutions. Council radio in Fire Station. <p><u>Constraints:</u></p> <ul style="list-style-type: none"> ○ Need generator to run the complex.

POTENTIAL IMPACTS & RESPONSES

IMPACT	HAZARD	RESPONSES
Need to evacuate	Tsunami, Storm/Flood, Fire, Volcanic Ash, Landslide	<ul style="list-style-type: none"> • Grab bags prepared. • House/building/container security. • Community Emergency Hub locations with basic supplies and communications.
Stuck at home	Earthquake, Storm/Flood, Volcanic Ash, Pandemic, Landslide	<ul style="list-style-type: none"> • Households have additional food, water & medication supplies. • Connect through Neighbourhood Support Networks & Community Hall Committees. • Community Emergency Hubs with communications.
Can't get home	Earthquake, Tsunami, Storm/Flood, Fire, Volcanic Ash, Landslide	<ul style="list-style-type: none"> • Pre-arranged plans including meeting points. • Communication through Community Emergency Hub network.
Injuries/ medical needs	All	<ul style="list-style-type: none"> • Households with trained first aiders and first aid supplies. • Community Emergency Hub first aid kit. • List of medical professionals.
No water	Earthquake, Tsunami, Storm/Flood, Fire, Volcanic Ash	<ul style="list-style-type: none"> • Household water tanks. • Household stores of bottled water. • River water (requires boiling).
No electricity	Earthquake, Tsunami, Storm/Flood, Fire, Landslide	<ul style="list-style-type: none"> • Household generators - held by many farmers. • Tutira School & Community Halls backup power capable.
No communications (phone or internet)	Earthquake, Tsunami, Storm/Flood, Fire, Volcanic Ash	<ul style="list-style-type: none"> • Private Starlink. • Community Emergency Hub VHF radios.
Loss of road access	Earthquake, Tsunami, Storm/Flood, Fire, Volcanic Ash, Landslide	<ul style="list-style-type: none"> • Alternative access routes (refer to maps). • Farm machinery available to restore road access.

RESILIENCE TOOLS

TOOLS		STATUS
1.	Personal preparedness enablers: Household Plan & Grab & Go Bag.	In Progress
2.	Community resilience & hub training, including lanyards roles.	Completed
3.	Community events - Friday nights at the Complex in Putorino, School events, Street events, Hall drop-in days, Container open days.	On Going
4.	Social media: <ul style="list-style-type: none"> ○ Tūtira Kotemaori Putorino Mohaka Communities Facebook group 	On Going
5.	Regular hub co-ordinator get-togethers.	In Progress

STAY?

ME NOHO?

SHELTER IN PLACE

Me Noho Ki Taua Wāhi



Our hazard decision path



Earthquake • He Rū

Our FIRST response:



Our SECOND response:

Was that long? (more than a minute)
Was that strong? (hard to stand up)

NO

YES



Tsunami • He Ngaru Taitoko

Are we in a tsunami zone?

NO

YES



Flood • He Waipuke

Are we in a flood zone?

Are we in danger from rising water?

NO

YES



Fire • He Kāpura

Go to agreed assembly area



Volcanic ash He Pungarehu Puia



Hazardous substance Ngā Matū Pūmate

OR GO?

ME HAERE RĀNEI?



Take the designated route to our safe location.

EVACUATE

Me Haere



IN AN EMERGENCY YOU WILL NEED:



AN EMERGENCY PLAN

Make a plan for your household, whānau and pets to get through an emergency, consider;

- Where will you meet or evacuate to?
 - How will you look after each other?
 - Who might need our help?
 - Who will we need to contact?
 - What will we do if we are stuck at home?
 - What will we do if we have no power, no water, no way to get information?
-



EMERGENCY SUPPLIES

You don't have to have them all in one place, but you might have to find them in a hurry and/or in the dark, store:

- Three litres of water per person per day.
 - First aid kit.
 - Long-lasting food that doesn't need cooking, or a way to safely cook or heat food without electricity, and extra fuel.
 - Consider also specific food needs of babies, children and pets.
 - Torch.
 - Emergency cash.
 - Half a tank of fuel in your vehicle.
 - Toilet paper and large plastic buckets for an emergency toilet.
 - Work gloves and a properly fitted mask.
-



EMERGENCY GRAB BAG

Pack your emergency grab bag with basic supplies including:

- Walking shoes, warm clothes, raincoat, and hat.
 - Water and snack food (remember babies and pets too).
 - Hand sanitizer & face mask.
 - Portable phone charger.
 - Cash.
 - Copies of important documents and Photo ID.
 - Medication.
 - Small first aid kit.
-

Remember your grab bag should be light enough that you can still carry it.

APPENDIX A: INTERNAL & EXTERNAL COMMUNICATION

Communication: Internal

The following table lists the different methods the community can use to communicate with each other:

	AREA/GROUP	NEED/ISSUE	APPROACH
1.	Waikoau	Communications	<ul style="list-style-type: none"> ○ A Messenger group (The Pony Express).
2.	Tutira	Communications	<ul style="list-style-type: none"> ○ Tūtira Kotemaori Putorino Mohaka Communities Facebook group. ○ Community newsletters.
		Welfare checks on people in the community	<ul style="list-style-type: none"> ○ Check-in on neighbours.
3.	Putorino	Communications	<ul style="list-style-type: none"> ○ Facebook group ○ Rural Postie ○ Forestry Radio ○ FENZ Radio ○ Notice Board at local store.
		Welfare checks on people in the community	<ul style="list-style-type: none"> ○ Check-in on neighbours.

HDC Lines of Communications: Protocol

IMPORTANT: Call 111 for all urgent or emergency situations.

The following table lists the agencies to contact in descending order or priority once the Community Emergency Hub has been activated:

	CONTACT POINT	CONTACT DETAILS	URGENT	NON-URGENT
1.	HDC Customer Services Centre (24/7)	(06) 871 5000	✓	✓
		customerservice@hdc.govt.nz <i>(Office hours Monday to Friday)</i>		✓
2.	HDC Incident Management Team	027 204 9985 OR eocwelfare@hdc.govt.nz <i>(Emergencies only)</i>	✓	
3.	HDC VHF radio	HDC Hubs Talk Group <i>(Emergencies only)</i>	✓	

APPENDIX A: INTERNAL & EXTERNAL COMMUNICATION

Communication: Emergency Agencies

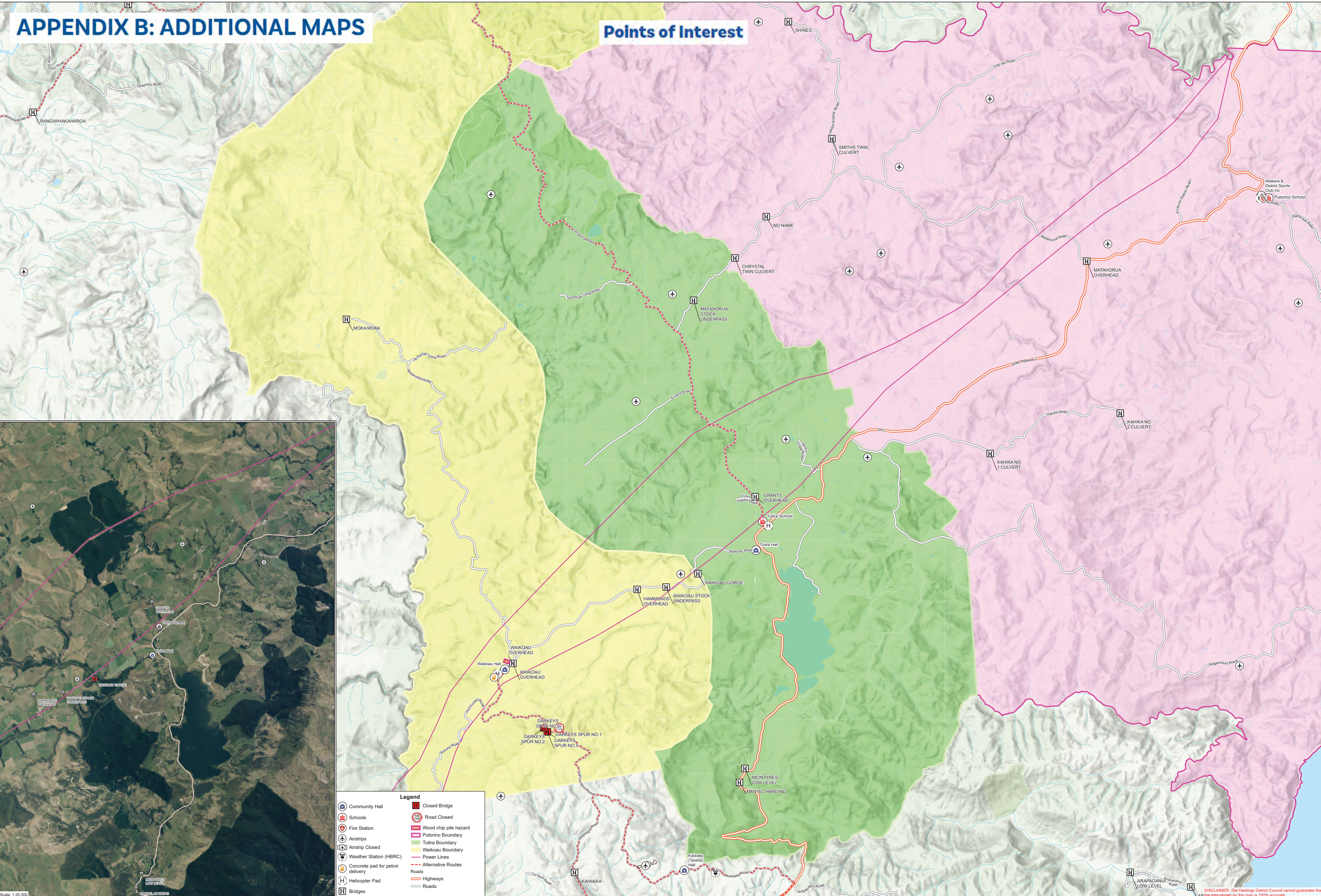
The following table lists the contact details for Emergency Agencies:

Monitor the following sources of information to stay informed:
Television | Radio [Frequencies: 90.3FM, 89.5FM, 97.5FM, 94.5FM]
Online Websites & Social Media (Official & Community Pages)

AGENCY	NEED/ISSUE	CONTACT/SOURCES OF INFORMATION
Police	Risk to people or property	Urgent: Call 111 OR Non-urgent: Call 105 or online
Fire & Emergency New Zealand (FENZ)	Risk to people or property	Call 111
Ambulance (St John)	Risk to people	Call 111
Hawke's Bay Emergency Management Office	Warnings, alerts, advice and key information before, during and after an emergency.	Online: https://www.hbemergency.govt.nz/ OR Facebook – HB Civil Defence Emergency Management Group.
MetService	Severe weather warnings, alerts.	Online https://www.metservice.com/warnings/home
Hastings District Council	Status of: <ul style="list-style-type: none"> local roads (i.e. not state highways) Urban water supply Urban wastewater (sewerage). Solid waste/rubbish collection and disposal. 	Call (06) 871 5000 (24/7) OR Email: customerservice@hdc.govt.nz (Monday to Friday 9am – 5pm) Facebook - Hastings District Council - Te Kaunihera ā-Rohe o Heretaunga Road status: https://www.hastingsdc.govt.nz/services/roads-and-streets/road-works
New Zealand Transport Agency (NZTA) / Waka Kotahi	Status of State Highways	Call: 0800 4 HIGHWAYS or (0800 44 44 49) Online: https://www.journeys.nzta.govt.nz/highway-conditions/ OR Facebook – NZ Transport Agency Waka Kotahi – Hawke's Bay & Gisborne
Unison Networks	Status of power supply	Call 0800 2 UNISON or 0800 2 86476 OR Online https://www.unison.co.nz/outages/
Hawke's Bay Regional Council (HBRC)	Status of: <ul style="list-style-type: none"> Rainfall. River levels and flows. Flood control and drainage. Air quality. 	Call (06) 835 9200 (24/7) OR 0800 108 838 OR Email: info@hbrc.govt.nz (Monday to Friday 8am – 5pm) OR Facebook – Hawke's Bay Regional Council

APPENDIX B: ADDITIONAL MAPS

Points of Interest



Scale: 1:25,000

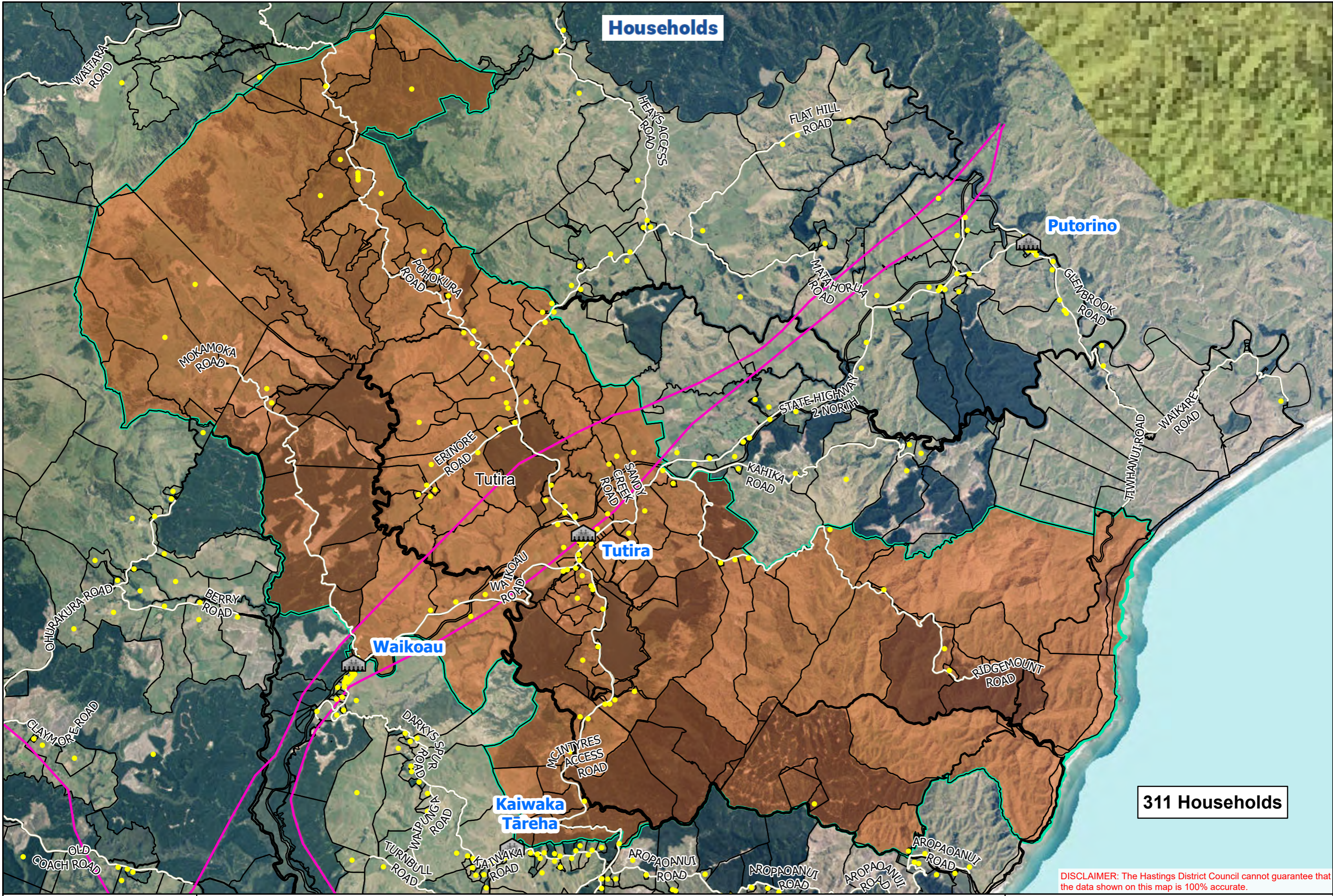
- Legend**
- Community Hall
 - Schools
 - Fire Station
 - Airstrips
 - Airstrip Closed
 - Weather Station (HBRC)
 - Concrete pad for petrol delivery
 - Helicopter Pad
 - Bridges
 - Closed Bridge
 - Road Closed
 - Wood chip pile hazard
 - Putorino Boundary
 - Tutira Boundary
 - Waikoau Boundary
 - Power Lines
 - Alternative Routes
 - Highways
 - Roads

Overview of Tutira Area (Waikoau, Tutira & Putorino)
Points of Interest

0 0.5 1 2
Kilometers
Scale: 1:25,000

Original Size: A0
Date: Friday, 20 September 2024
Projection: NZTM / Datum: D_NZGD_2000
Map Produced using ArcGIS Pro
Tutira_Community

DISCLAIMER: The Hastings District Council cannot guarantee that the data shown on this map is 100% accurate.



Households

Putorino

Tutira

Tutira

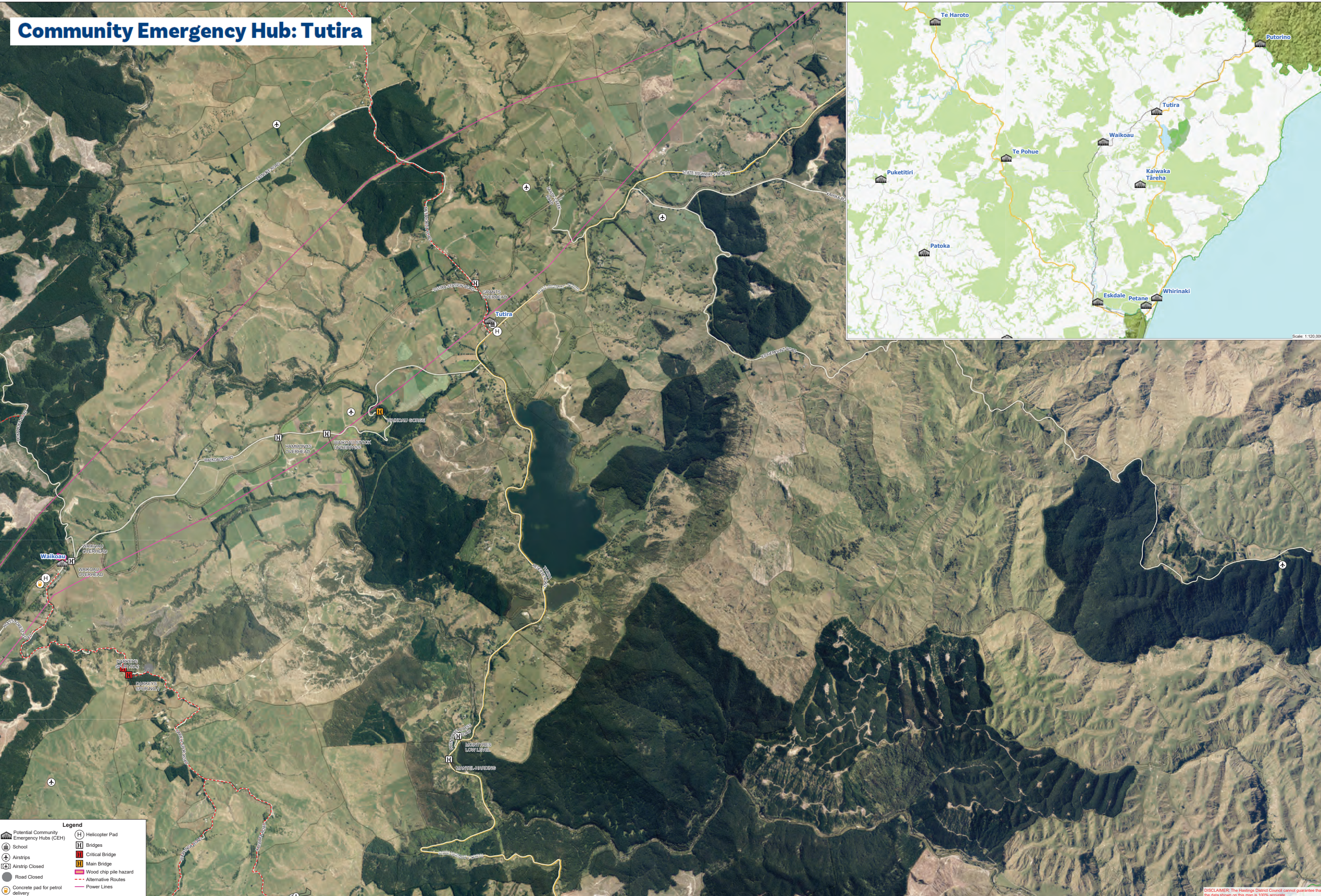
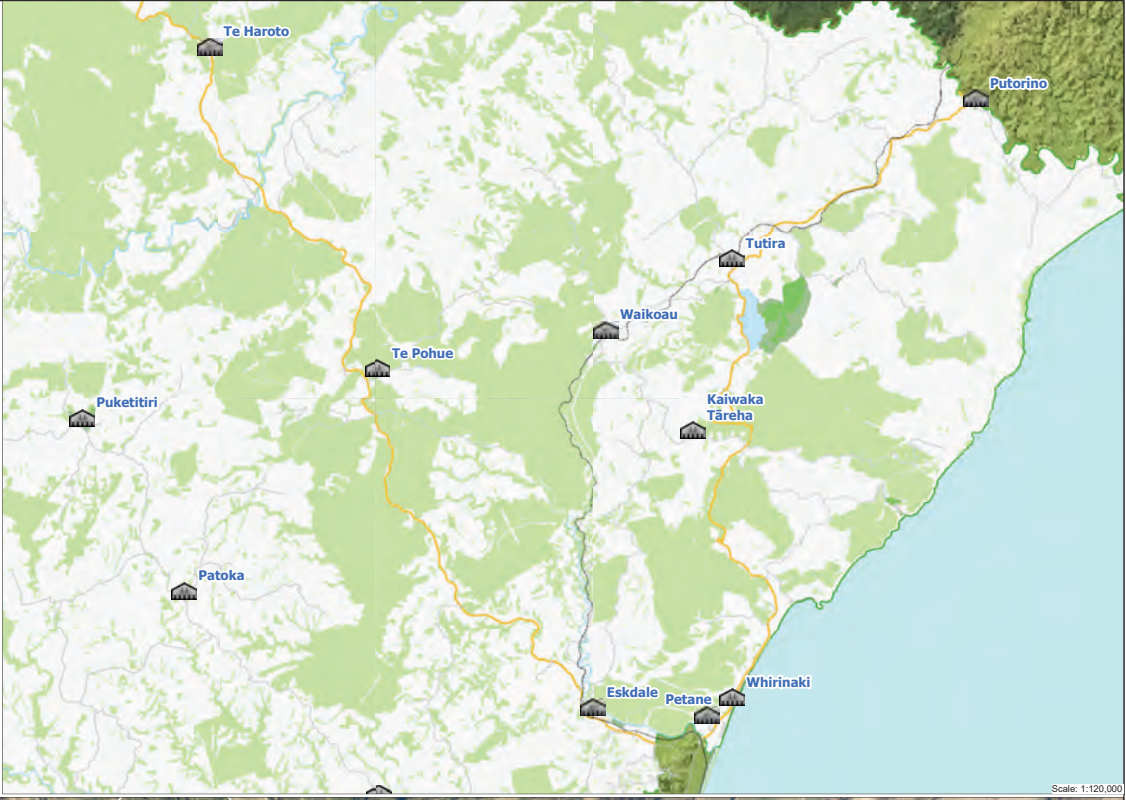
Waikoau

Kaiwaka
Tāreha

311 Households

DISCLAIMER: The Hastings District Council cannot guarantee that the data shown on this map is 100% accurate.

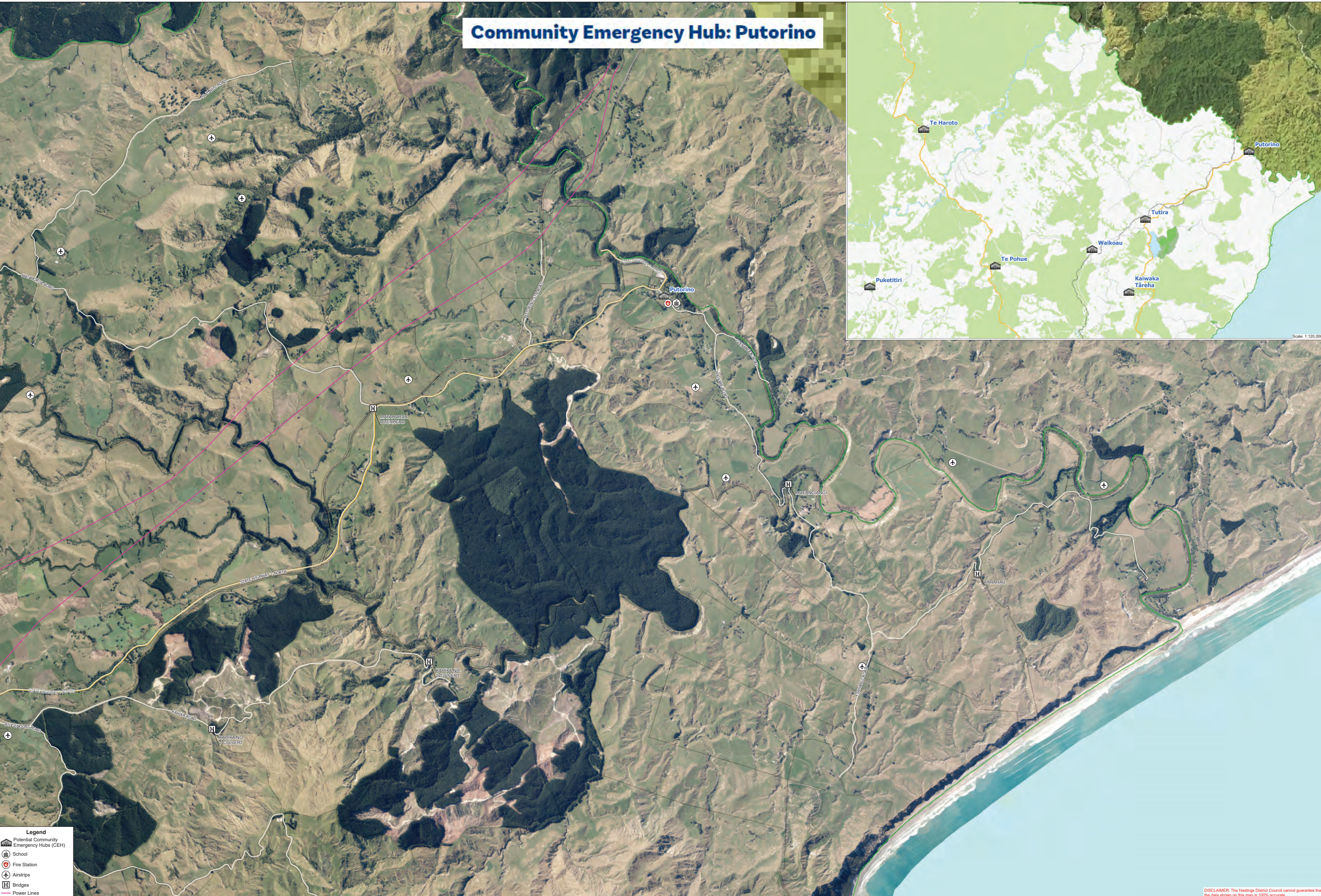
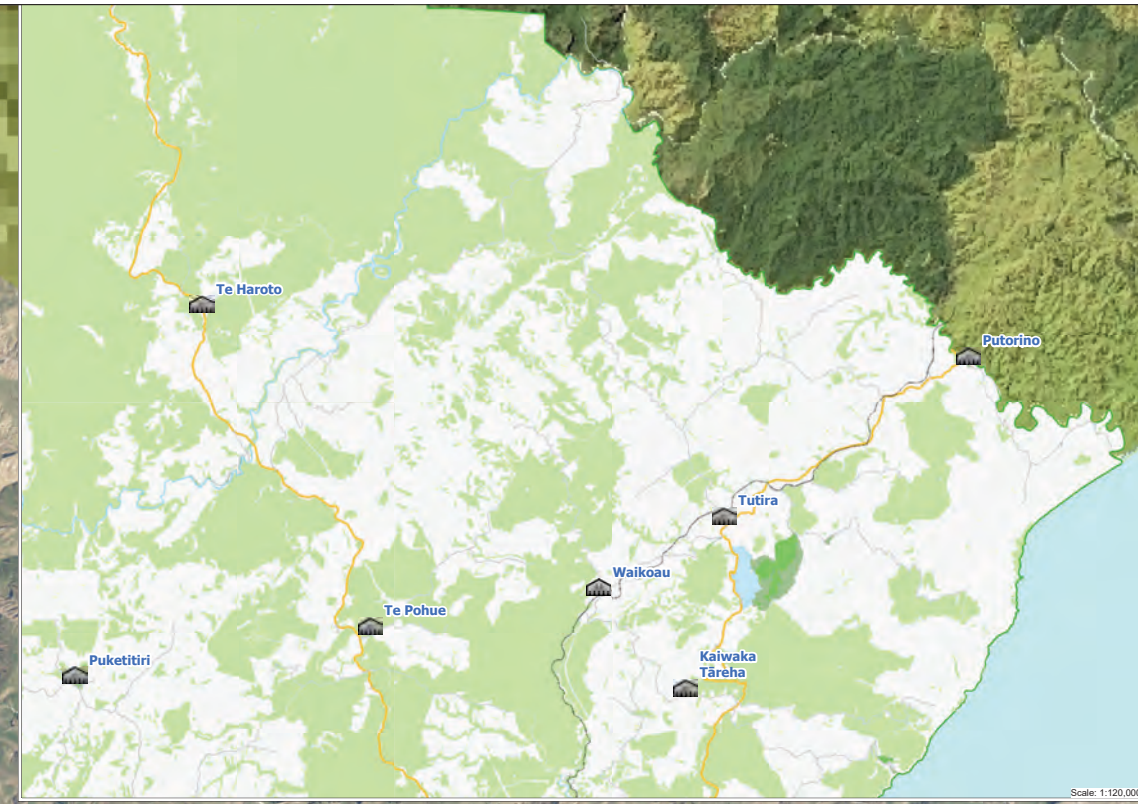
Community Emergency Hub: Tutira



Legend

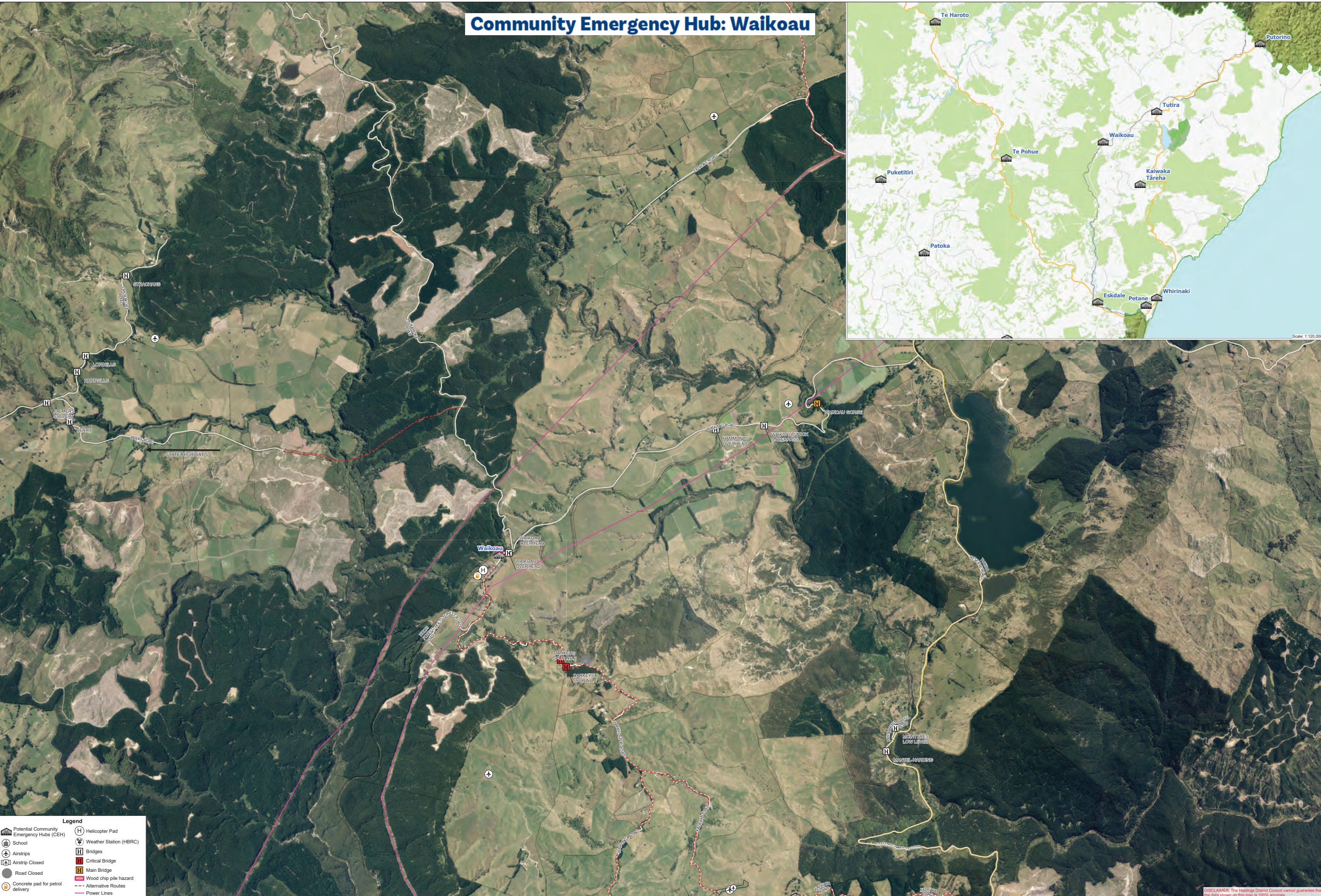
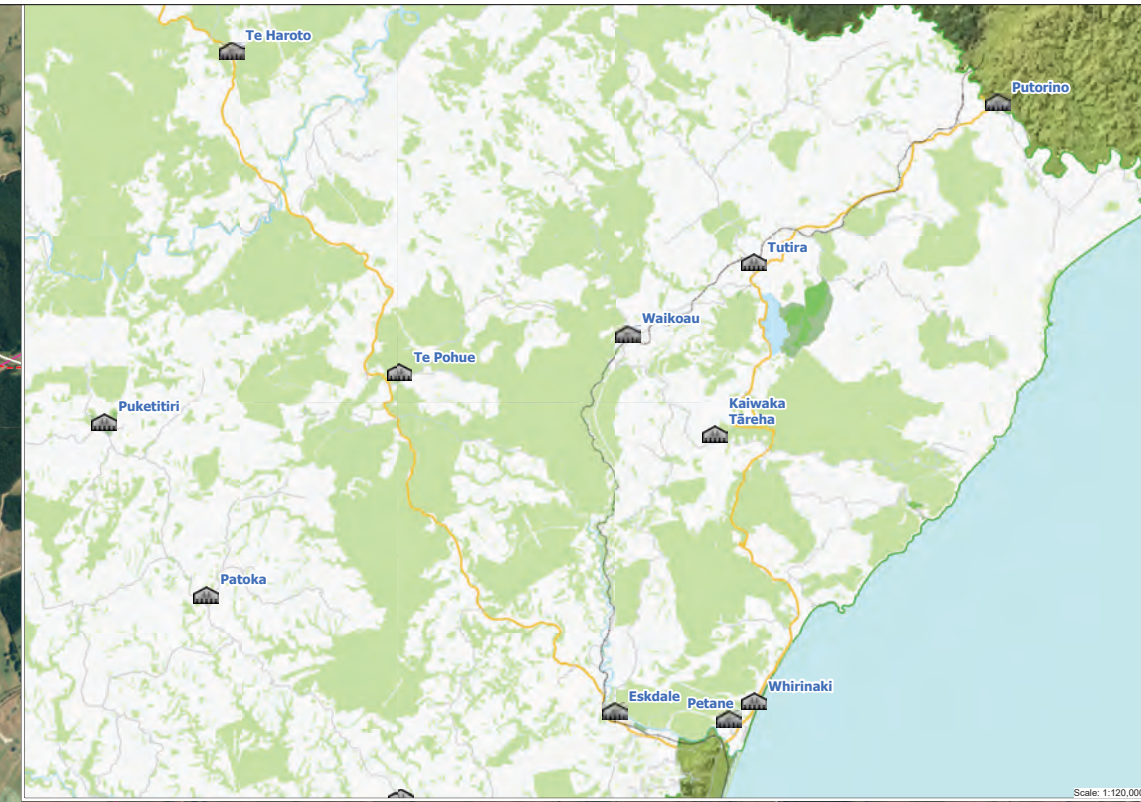
Potential Community Emergency Hubs (CEH)	Helicopter Pad
School	Bridges
Airstrips	Critical Bridge
Airstrip Closed	Main Bridge
Road Closed	Wood chip pile hazard
Concrete pad for petrol delivery	Alternative Routes
	Power Lines

Community Emergency Hub: Putorino



- Legend**
- Potential Community Emergency Hubs (CEH)
 - School
 - Fire Station
 - Airstrips
 - Bridges
 - Power Lines

Community Emergency Hub: Waikoau



Legend

Potential Community Emergency Hubs (CEH)	Helicopter Pad
School	Weather Station (HBRC)
Airstrips	Bridges
Airstrip Closed	Critical Bridge
Road Closed	Main Bridge
Concrete pad for petrol delivery	Wood chip pile hazard
	Alternative Routes
	Power Lines